

State of Wisconsin

County of FOREST

} ss.

ESTABLISHMENT OF QUARTER - QUARTER SECTION CORNER BETWEEN ORIGINAL GOVERNMENT SURVEY CORNERS.

I NEAL SPERHAKE, do hereby certify that on the THIRTIETH day of SEPTEMBER, 19 64, I established the SOUTH ONE SIXTEENTH CORNER BETWEEN SECTIONS 34 AND 35, TOWNSHIP 35 NORTH, RANGE 13 EAST, Fourth Principal Meridian, as described hereon.

History: There is no record of this corner having ever been previously established.

Description of monument and accessories I established to perpetuate the location of this corner:

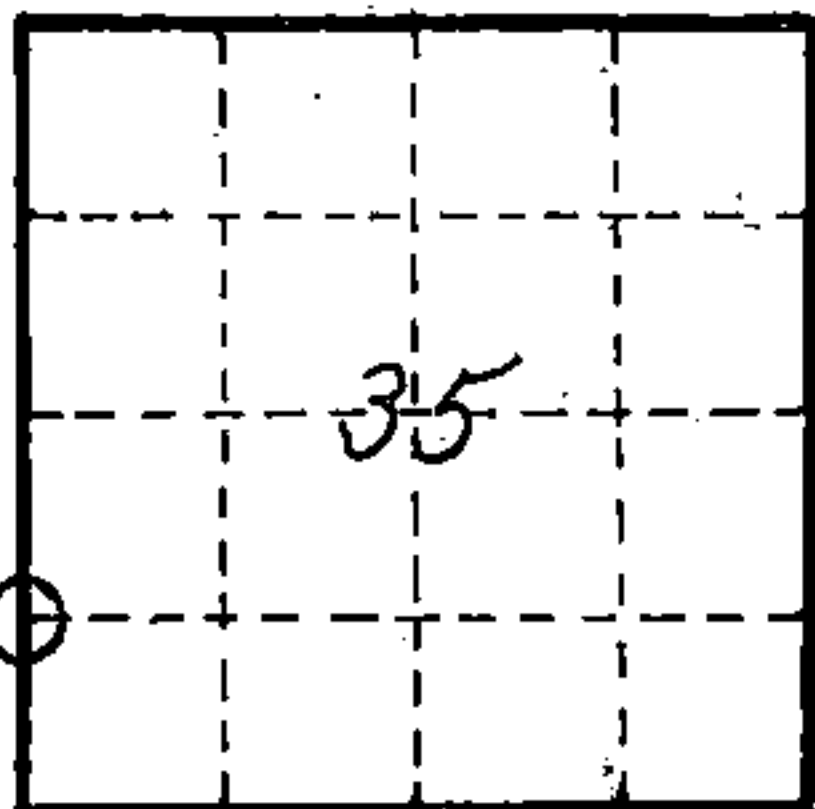
At the point determined for the location of the corner I emplaced a:

GALVANIZED IRON PIPE, THREE FEET LONG, ONE INCH IN DIAMETER, WITH ALUMINUM CAP DENOTED AS, "KIMBERLY CLARK CORP. T35N S 1/16 BTWN. 34 & 35 R13E SPERHAKE RLS 463 9/30/64."

The pipe is witnessed by:

- Hemlock 9 N 70°W 42 links. (SCRIBED S34 BT).
- Hemlock 11 N 87°E 47 links. (SCRIBED S35 BT).

Description as to how corner was located: Since both the quarter section corner 1/4 mile north and the section corner 1/4 mile south have been previously established with a distance between them of 40.23 1/2 chains, the S 1/16th. corner was set 20.11 3/4 chains from either corner and on a straight line between them.



0 = Corner monument restored

89618

REGISTRY OFFICE  
FOREST COUNTY, WIS.  
FILE  
JAN 12 1965  
FILE  
Anna Peterson, Registrar of Deeds

Resident witnesses \_\_\_\_\_

Dated at Crandon, Wisconsin, this 12th day of January, 19 65.

Signature Neal Sperhake

Title Registered Land Surveyor Registration No. 463

~~of~~ Forest County ~~of~~ Wisconsin, I hereby certify that the within instrument was ~~filed in this~~ ~~office for record~~ on the 12th day of January 1965, and was ~~filed in Book No.~~ signed and ~~Page No.~~ sworn to ~~of County Records.~~ before me.

Surveyor's Seal

Signature Anna Peterson Title Notary Public

4 3513 34 1000

Index No. Y17

CERTIFIED LAND CORNER RESTORATION

Index No. Y-17

State of Wisconsin }  
County of Forest } ss.

History of original corner establishment:

Neal Sperhake, Registered Land Surveyor, set S 1/16 in 1964.

I Glen Barker, do hereby certify that on the 28th day of April, 1983, I found evidence of the S 1/16 corner of Sections 34 & 35 Township 35, North, Range 13 East, Fourth Principal Meridian, as described hereon; and that from this evidence I established a new monument and accessories as described hereon to perpetuate the original location of this corner.

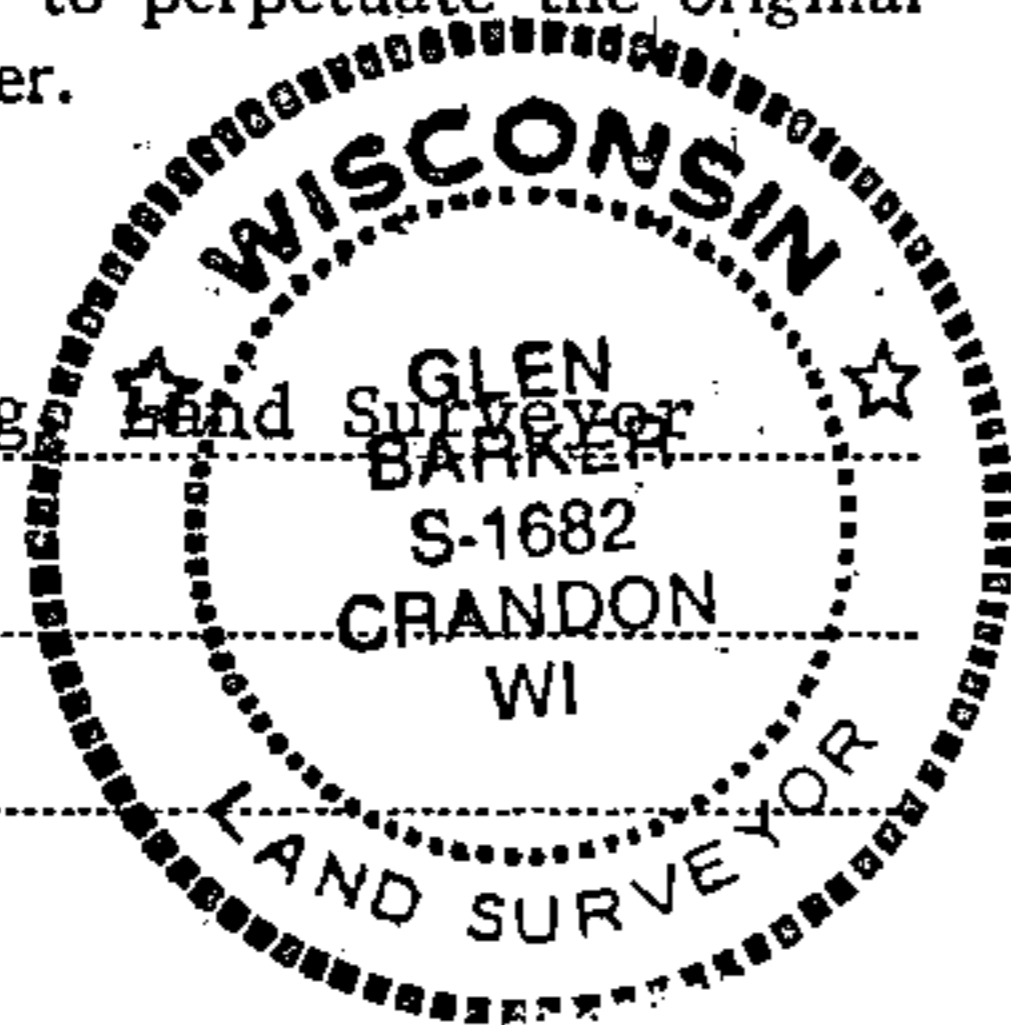
Description of corner evidence found:

Total distance from 1/4 corner between sections 34 and 35 to section corner 2-3-34-35 T34&35N R13E is 2650.54 feet.  
Set S 1/16 1325.27 feet intermediate.  
Sperhake monument bears S40E 1.50 feet from our position.

Resident witnesses:

J. Claflin, Reg. Land Surveyor

H. Wagoner

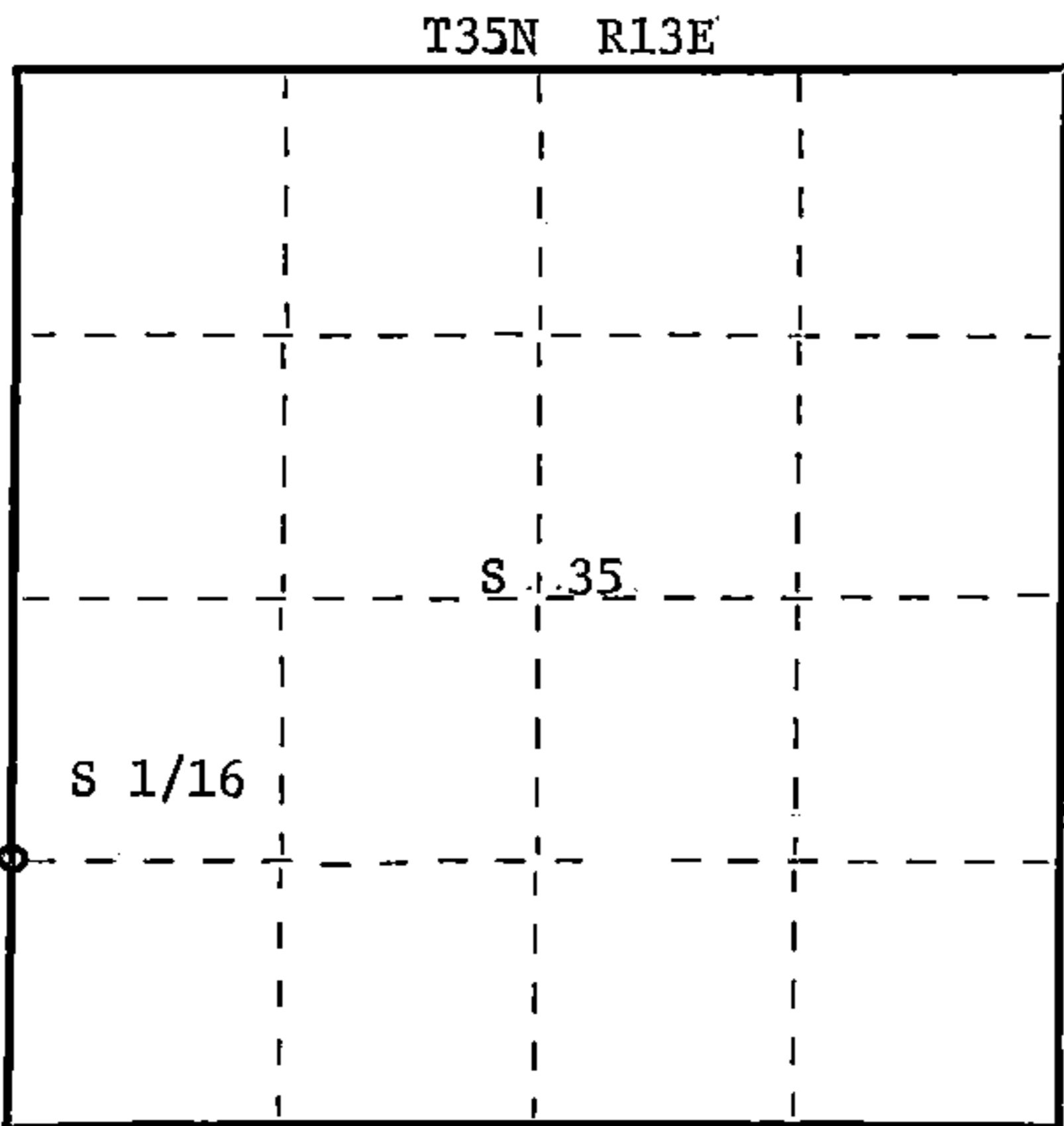


Description of monument and accessories I established to perpetuate the original location of this corner.

Set a 1" iron pipe with 2" diameter alloy cap, stamped:  
Monument projects 18" above ground.  
B.T. ties to Sperhake's BT's.  
Hemlock 12" S89E 32.10  
scribed S35 B.T.  
Hemlock 11" N71W 26.57 feet

S1682  
T35N R13E  
S 1/16 34-35  
CPI-1983

Stock No. 26272  
FORM 985



○ = Corner monument restored.

Dated at Rhineland, Wis., this 30th day of June, 1983

Signature Glen Barker Title Registered Land Surveyor Registration No. S-1682  
(County Surveyor, Registered Land Surveyor, or other duly authorized official)

Office of Register of Deeds, County of Forest, I hereby certify that the within instrument was filed in this office for record on the 26th day of July, 1983 at 11:55 o'clock A. M.

Eugene Stetson  
(Register of Deeds)  
By \_\_\_\_\_ Deputy

DOCUMENT NO. 123861

435133410000