

CERTIFIED LAND CORNER RESTORATION

Index No. X-16 X16

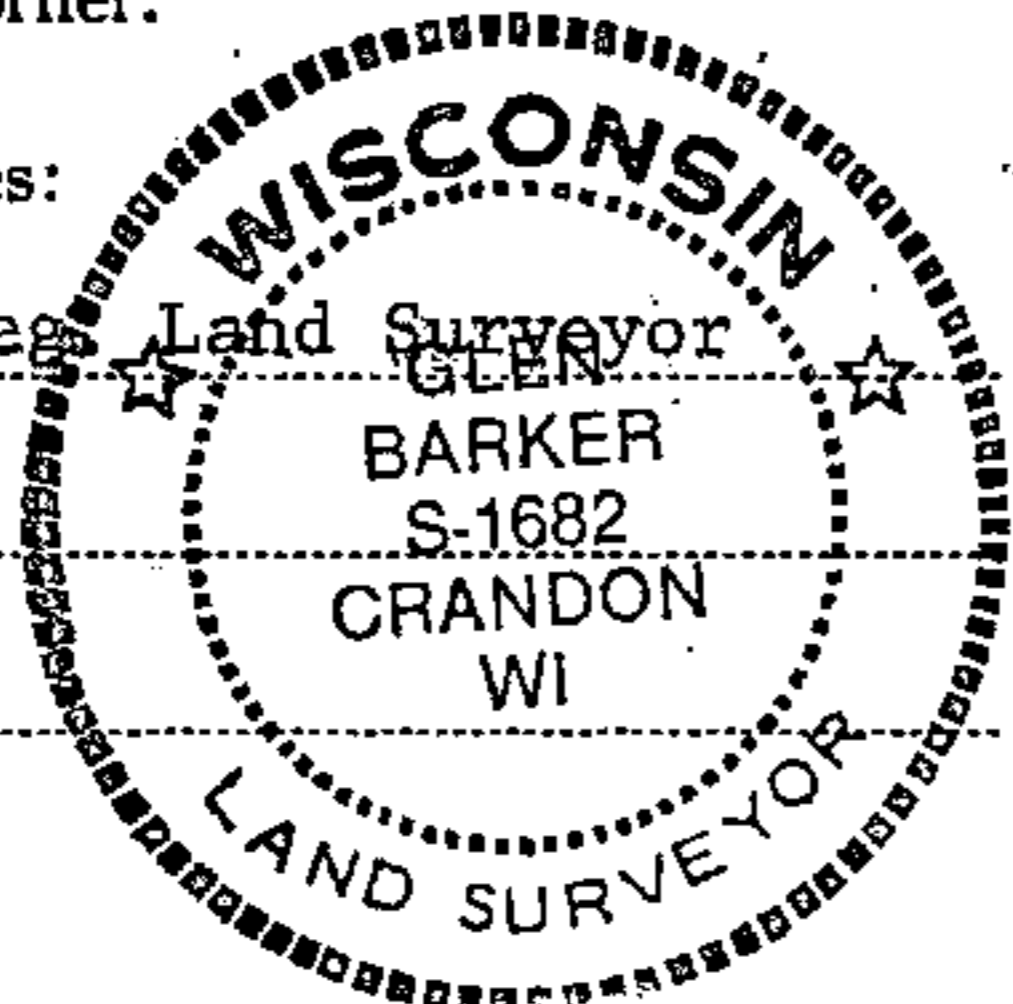
State of Wisconsin }  
County of Forest } ss.

I Glen Barker, do hereby certify that on the 18th day of November, 1982, I found established corner of EC 1/16 Section 28 Township 35 North, Range 13 East, Fourth Principal Meridian, as described hereon; and that from this evidence I established a new monument and accessories as described hereon to perpetuate the original location of this corner.

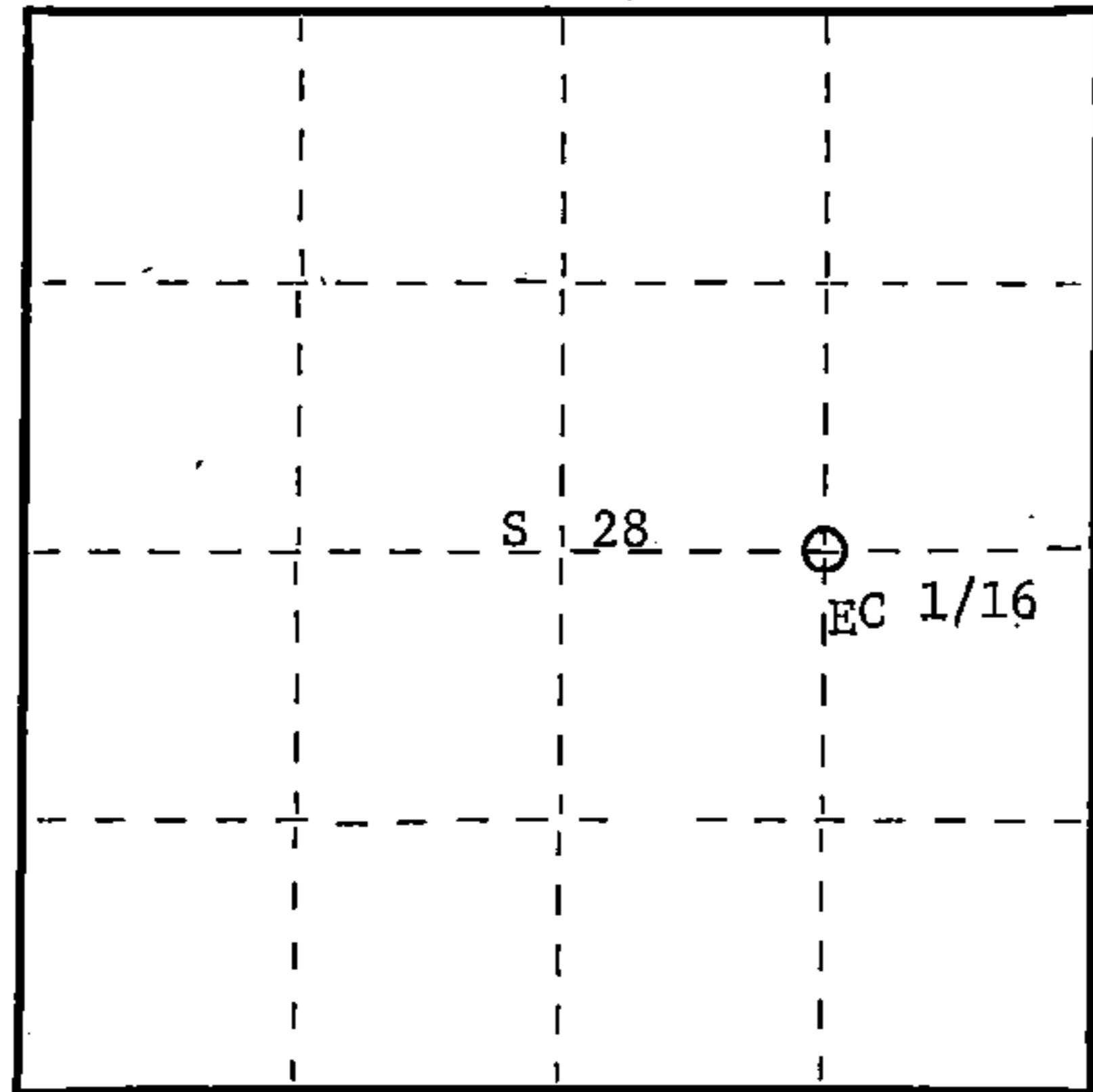
Resident witnesses:

J. Claflin, Reg. Land Surveyor

H. Wagoner



T35N R13E



○ = Corner monument restored.

History of original corner establishment:

No evidence of any previous corner.

Description of corner evidence found:

Total distance from 1/4 corner between sections 27 and 28 to C 1/4 section 28 is 2620.01 feet at bearing N 87-39-43 W.  
Set EC 1/16 1310.005 feet intermediate.

Description of monument and accessories I established to perpetuate the original location of this corner.

Set a 1" iron pipe with 2" diameter alloy cap - stamped:  
Monument projects 12" above ground.

Marked NBT's:

Cedar 6" S13°E 21.95 feet  
Cedar 7" S73°W 17.05 feet  
scribed 1/16 - B.T.

S1682  
T35N R13E  
EC 1/16 S+28  
CPI-1982

Dated at Rhinelander, Wis., this 21st day of March, 1983

Signature *Glen Barker* Title Reg. Land Surveyor Registration No. S-1682  
(County Surveyor, Registered Land Surveyor, or other duly authorized official)

Office of Register of Deeds, County of Forest, I hereby certify that the within instrument was filed in this office for record on the 7th day of April, 1983 at 9:30 o'clock A.M.

*Eugene Stutzman*  
(Register of Deeds)

DOCUMENT NO. 123151

By \_\_\_\_\_ Deputy

Stock No. 26272  
FORM 985  
HGMiller Company

43513282014