

CERTIFIED LAND CORNER RESTORATION

Index No. **V-20**

State of Wisconsin }  
County of Forest } ss.

History of original corner establishment:  
Some one's 1" iron pipe

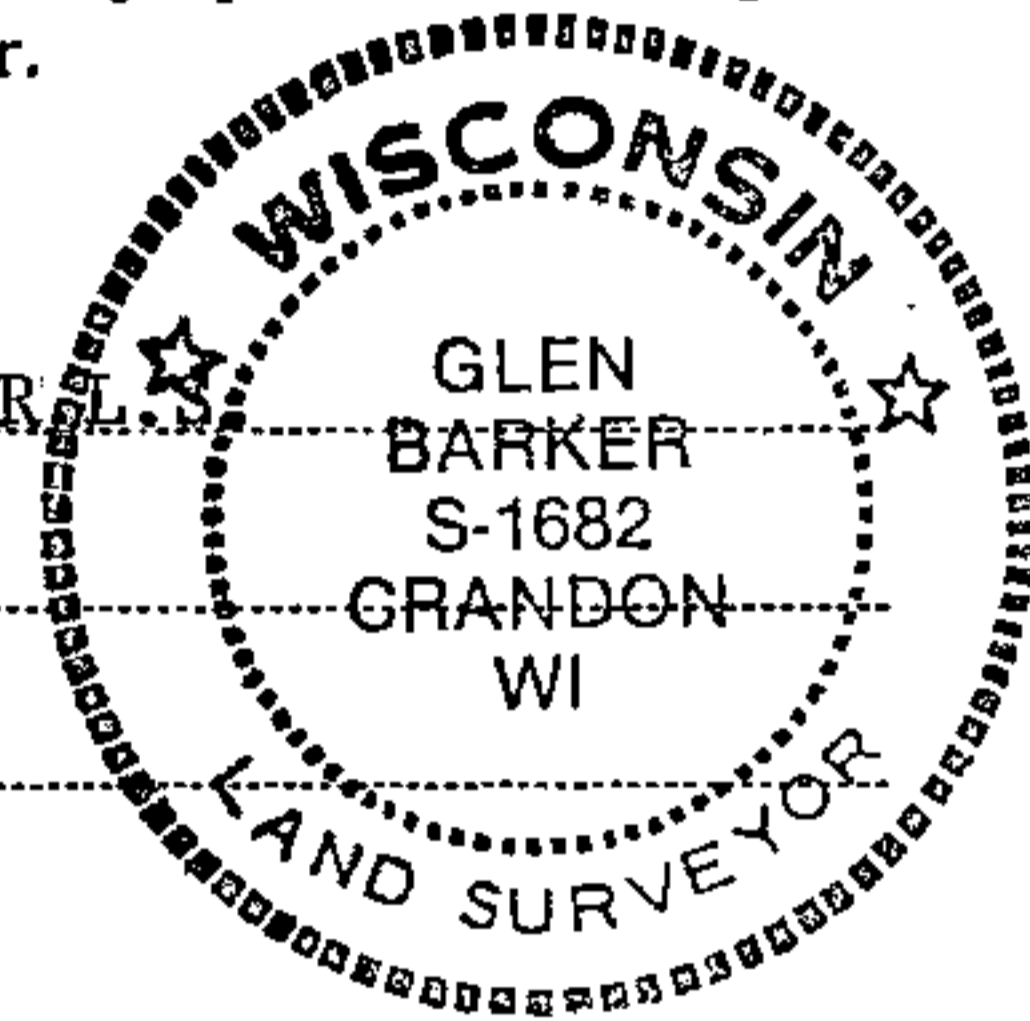
I Glen Barker, do hereby  
certify that on the 29th day  
of March, 1983, I ~~found~~ estab.  
~~evidence~~ of the E 1/16  
corner of Sections 26 & 35  
Township 35, North, Range  
13 East, Fourth Principal Meridian,  
as described hereon; and that from this evidence  
I established a new monument and accessories  
as described hereon to perpetuate the original  
location of this corner.

Description of corner evidence found:  
Total distance from section corner 25-26-35-36 to 1/4 corner between sections 26 & 35 is  
2620.45 ft.  
Set E 1/16 1310.225 ft. intermediate.  
Some one's 1" iron pipe bears South 0.15 ft. of our position.

Resident witnesses:

J. Claflin - R

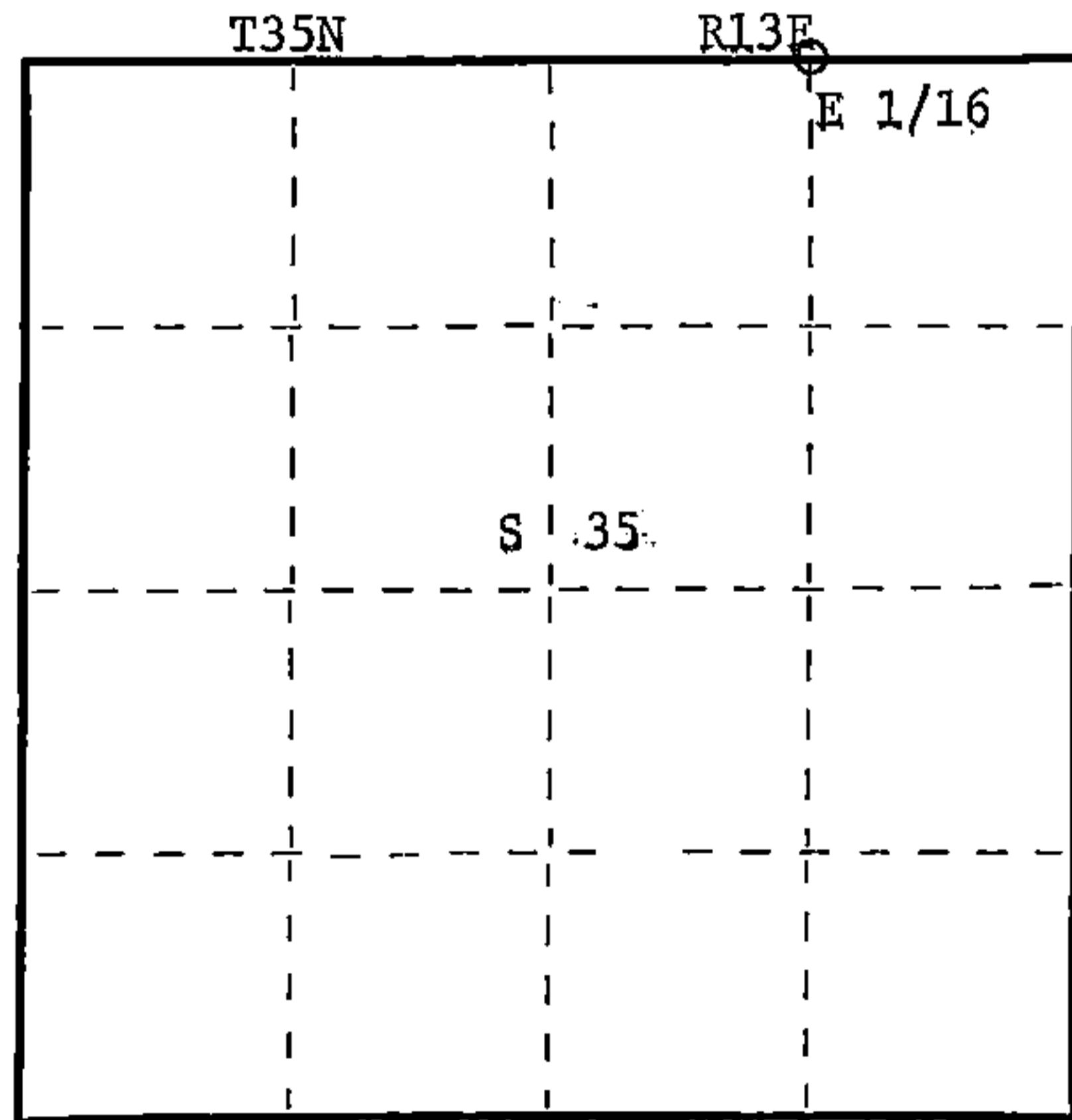
H. Wagoner



Description of monument and accessories I established to perpetuate the original location of this corner.  
Set a 1" iron pipe with 2" diameter alloy cap stamped:

Marked NBTs  
Red oak 6" N84W 12.39 ft.  
Sugar 7" N34W 18.66 ft.  
Scribed 1/16 - B.T.

S1682  
T35N R13E  
S 26  
E 1/16 S 35  
CPI - 1983



○ = Corner monument restored.

Dated at Rhineland, Wis., this 6th day of May, 1982

Signature Glen Barker Title Registered Land Surveyor Registration No. S1682  
(County Surveyor, Registered Land Surveyor, or other duly authorized official)

Office of Register of Deeds, County of Forest, I hereby certify that the within  
instrument was filed in this office for record on the 19th day of May, 1983  
at 3:00 o'clock P. M.

Eugene Staszny  
(Register of Deeds)  
By \_\_\_\_\_ Deputy

DOCUMENT NO.  
**123413**

Stock No. 26272  
FORM 985  
H.C. Miller Company

43513260010