

State of Wisconsin
County of FOREST

ss. RESTORATION OF LOST ORIGINAL GOVERNMENT SURVEY CORNER.

I NEAL SPERHAKE, do hereby certify that on the SEVENTH day of OCTOBER, 19 64, I established the WEST QUARTER SECTION CORNER OF SECTION 23, TOWNSHIP 35 NORTH, RANGE 13 EAST, Fourth Principal Meridian, as described hereon.

History: This corner was established during the original survey of this township, as noted in the original field notes for the original survey of T35N-R13E, 4th. p.m.

Description of monument and accessories I established to perpetuate the location of this corner:

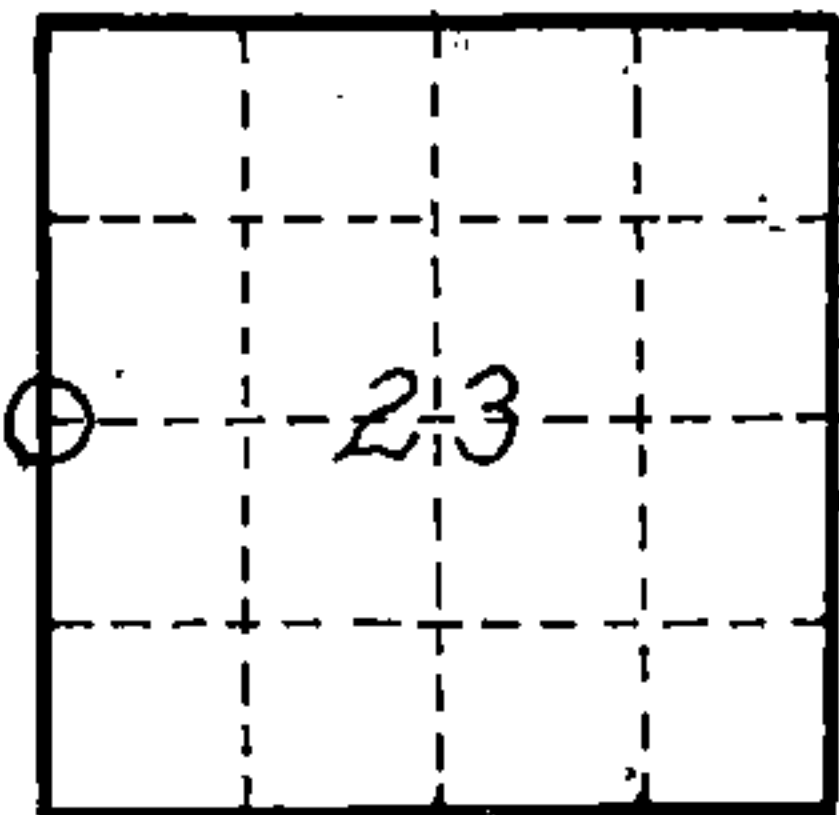
At the point determined for the location of the corner I emplaced a:

GALVANIZED IRON PIPE, THREE FEET LONG, ONE INCH IN DIAMETER, WITH ALUMINUM CAP DENOTED AS, "KIMBERLY CLARK CCRP. T35N 1/4 BTWN. 22 & 23 R13E SPERHAKE RLS 463 10/7/64."

The pipe is witnessed by:

- Poplar 7 S 68°E 32 links. (SCRIBED 1/4 BT).
- Basswood 5 S 27°W 44 links. (SCRIBED 1/4 BT).

Description as to how corner was located: No evidence of the original corner is present. However,



O = Corner monument restored

at a site that apparently has been accepted as the corner in question, was discovered a one inch iron pipe and two new bearing trees denoted as above. The trees are scribed BT instead of NBT, but since they've been scribed no longer than ten years ago, they can of course be only new bearing trees. I have been unable to discover who did the survey that established this point, or how it was done. I have been unable to locate anything north of this corner. At the start of the retracement survey the nearest known corner to the south was the town line corner of 34 and 35. The original distance between the town line corner of 34 and 35 and the quarter between 22 and 23 was 200 chains. The present distance from the corner of 34 and 35 and the iron pipe marking the quarter corner in question is 201.16 chains. This overage in 2 1/2 miles is compatible with other work observed in this vicinity. A straight line was run between the town line corner of 34 and 35 and the iron pipe, and upon completion of the entire retracement survey performed in this area the corner of 26, 27, 34, 35 was found to be 15 links east of this line, and the corner of 22, 23, 26, 27, was found to be 60 links west of this line. This in itself proves nothing but it does point out that the iron pipe is on a meridian that is compatible with the east-west positions of the section corners to the south of it. Therefore, since both the north-south position of the pipe and its east-west position seem to be compatible with the general position of all the other corners located during the retracement survey of this entire area, I have accepted it as marking the site of the original quarter section corner between 22 and 23. I have used the existing new bearing trees as noted above as the witnessed to the pipe, emplaced another pipe and cap also as noted above, and recorded it.

Resident witnesses

Dated at Crandon, Wisconsin, this 12th day of January, 19 65

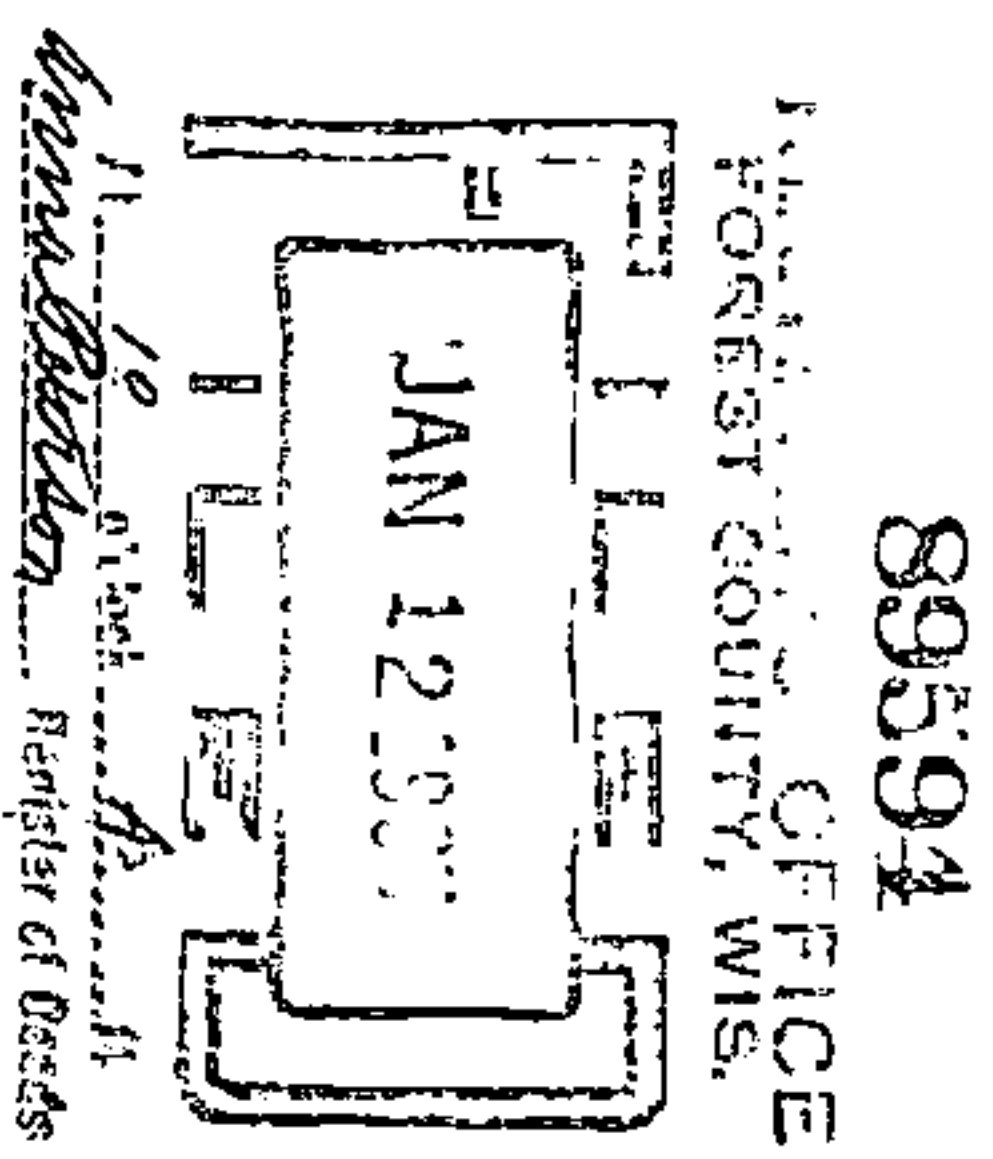
Signature Neal Sperhake

Title Registered Land Surveyor Registration No. 463

~~Office of~~ Forest County ~~of~~ Wisconsin, I hereby certify that the within instrument was ~~filed in the~~ office for record on the 12th day of January 1965, and was ~~filed in~~ signed and ~~Page No.~~ sworn to of County Records before me.

Signature Anna Peterson Title Notary Public

43513222000



Surveyor's Seal

Index No. P17

Document Number
207853

REGISTER'S OFFICE }
Forest County, Wis. }
Received for record this 10th day
of DECEMBER A.D., 2011 at
9:00 o'clock A.M. and recorded
in Vol. CORNER RESTORATION
page P17A-PI7C 735 R13
Jeffrey M. Lieuwen, Deputy
Register of Deeds.

U.S. PUBLIC LAND SURVEY MONUMENT RECORD
(As Required By s. A-E 7.08, WI Adm. Code)

History of original corner establishment and subsequent restorations and description of any record, monument, occupational, testimonial or other evidence considered:

THIS CORNER WAS ESTABLISHED DURING THE ORIGINAL SURVEY OF THIS TOWNSHIP, AS NOTED IN THE ORIGINAL FIELD NOTES FOR THE ORIGINAL SURVEY OF T35N-R13E, 4th PRINCIPLE MERIDIAN

1965 NEAL SPERHAKE, S-463, SET KIMBERLY CLARK MONUMENT IN PLACE OF 1 INCH AND 2 "NEW" BEARING TREES

1993 GLEN BARKER, S-1682 REPLACED DAMAGED MONUMENT WITH NEW FOREST COUNTY MONUMENT

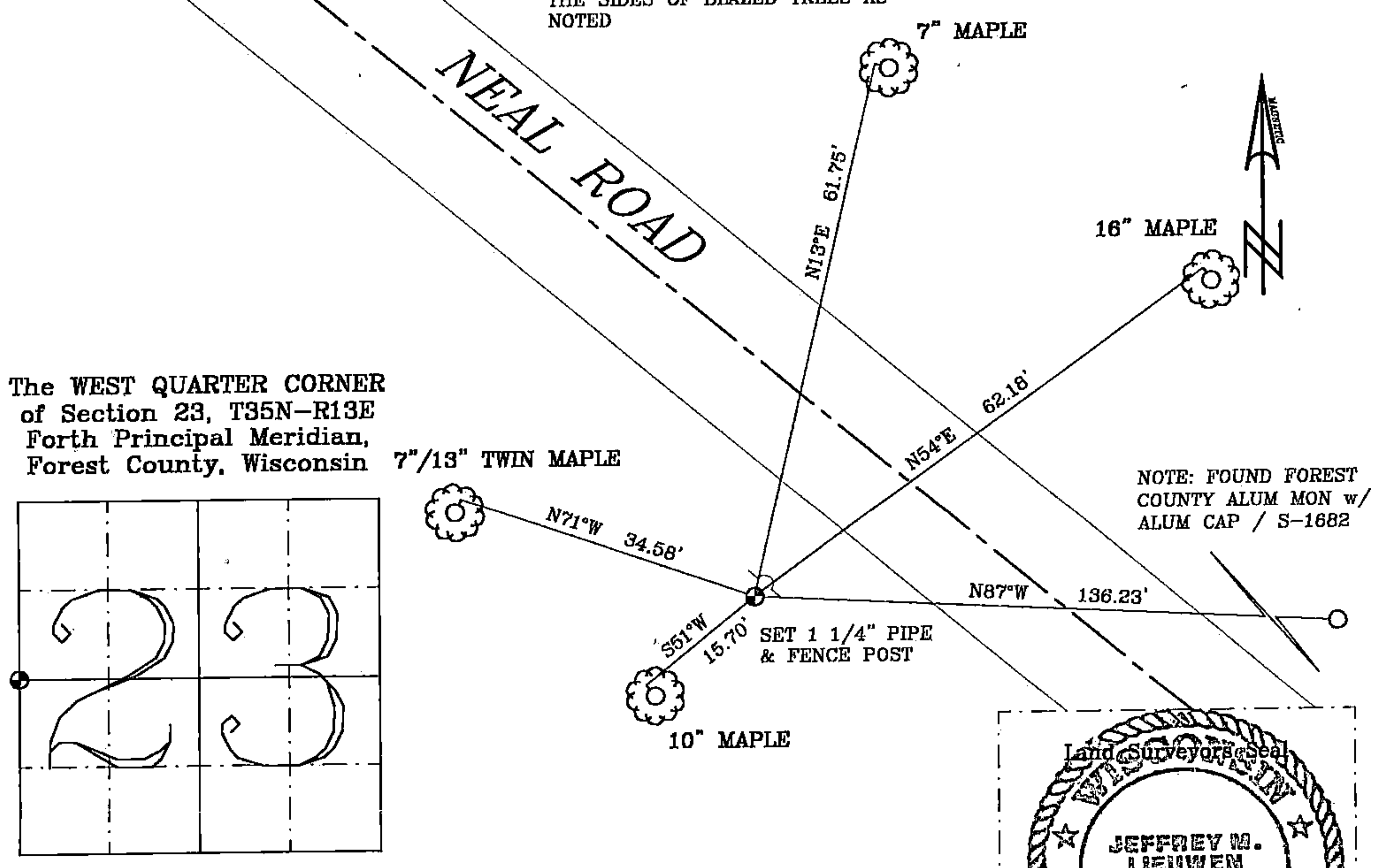
2011 SEE PAGE 2

Corner was: (Check All That Apply)

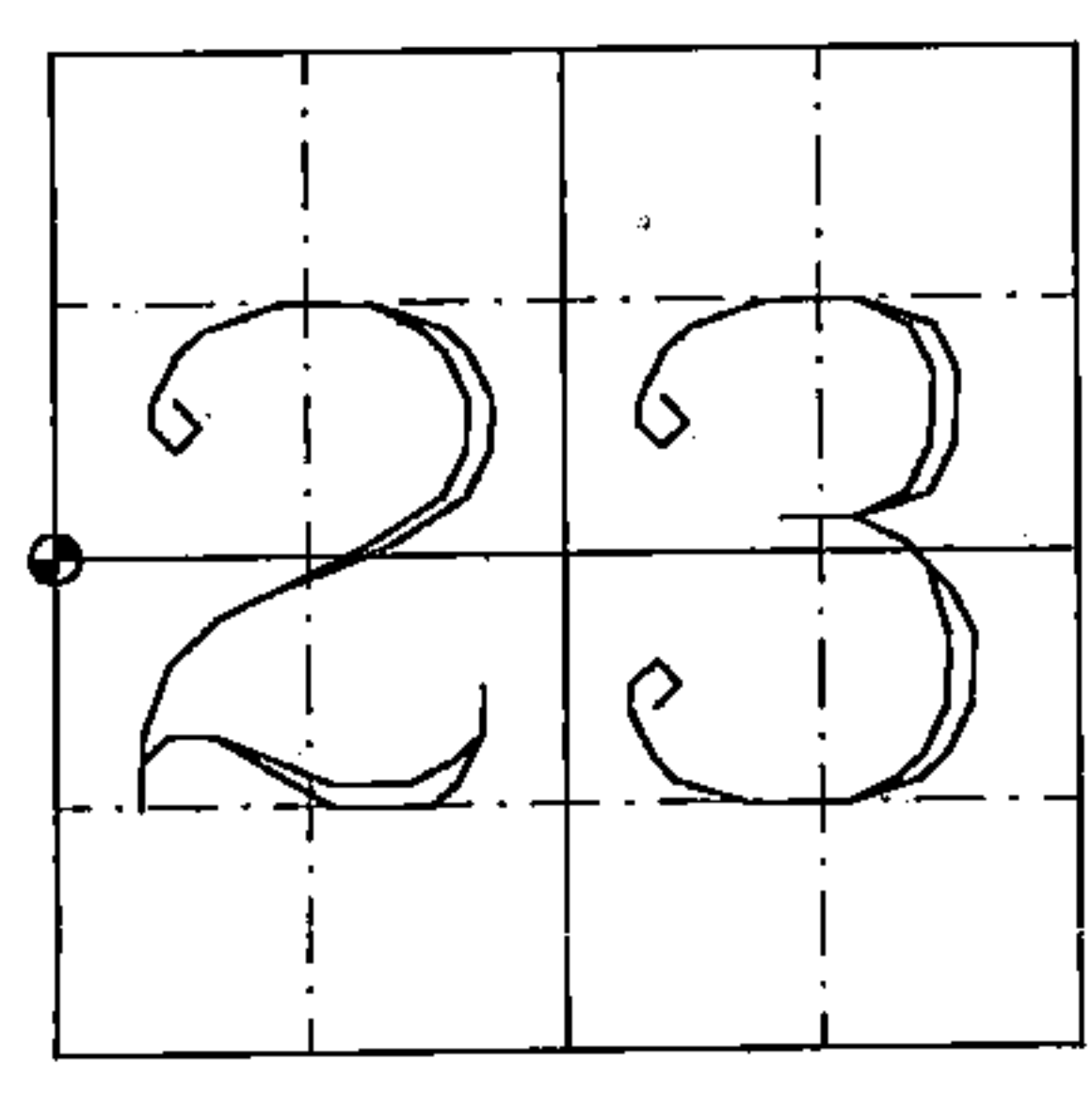
- Restored through acceptance of an obliterated evidence location
- Restored through acceptance of a found perpetuated location
- Considered a lost corner and reestablished through lost corner proportionate methods(include a plan view drawing showing distances and directions to other Public Land Survey Corner used for proportioning and determining the corner location)
- Restored or reestablished in a location that differs from a previous restoration of reestablishment(include a plan view drawing and indicate what was set and/or found)

Describe the monument and accessories used to perpetuate the location of this corner. (include a plan view drawing and indicate what was set and/or found

NOTE: TIES ARE 60d SPIKE IN THE SIDES OF BLAZED TREES AS NOTED

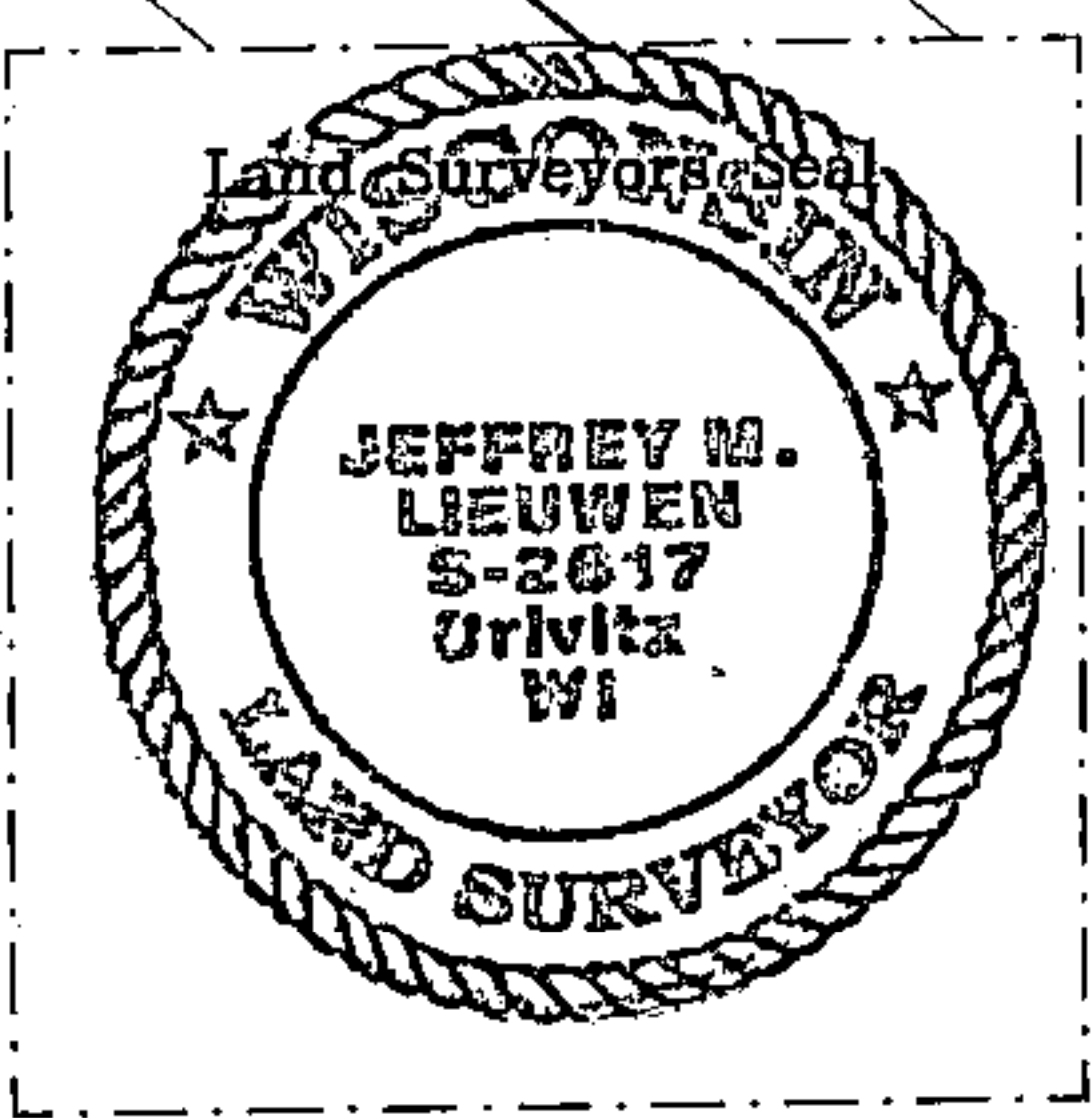


The WEST QUARTER CORNER of Section 23, T35N-R13E Forth Principal Meridian, Forest County, Wisconsin



NOTE: FOUND FOREST COUNTY ALUM MON w/ ALUM CAP / S-1682

⊙ = Location



I, JEFFREY M. LIEUWEN RLS 2617
(type or print name) certify that the corner location shown on this record was determined by me or under my direction and control and that this U.S. Public Land Survey Monument Record is correct and complete to the best of my knowledge and belief.

[Signature]
Date DEC 13, 2011

Index No. P17A

A 3513 22 2000

Quarter Corner, Sections 22 & 23, T35N-R13E

In May of 2008, we were hired by Cary Chmielewski to survey his parcel in Government Lot 1, Section 23, T35N-R13E, Town of Lincoln, Forest County, Wisconsin. Chmielewski's west line being the west line of Government Lot 1. In September 2007, Jeffrey L. DeMuth of MSA surveyed the Keberlein property located in Government Lot 1, Section 22, Keberlein's east line being Chmielewski's west line. The DeMuth survey places Keberlein's east line through Chmielewski's cabin.

As we started our research, Chmielewski provided us with a copy of a "Keith & Hiles Lumber Company" (K & H) map from 1908, at that time not on file with Forest County. With additional research to include surveys of record, monument records, deeds and a 1971 survey by Arvin M. Hess, establishing Chmielewski's south, east and north boundaries, this survey looked cut and dried, until we started comparing distances of record with the K & H map. This brought the validity of the Quarter Corner between Sections 22 & 23 into question.

In 1965, Neal Sperhake, surveyor for Kimberly Clark Corp found a 1-inch pipe with 2 B.T.'s, noting that B.T.'s are "no longer than 10 years old" (7" poplar & 5" basswood). Sperhake's position went unquestioned until now, except, possible by Sperhake himself. In reading Sperhake's history, I feel he is trying to talk himself into this position and with no better option (or mapping), he accepted the 1 inch pipe. Sperhake's Quarter Corner's is 136 feet east of a line from the Meander Corner to the Southwest Corner Section 23. The distance from the found 1 1/4 well point at the Center-of-Section 22, to Sperhake's Corner is 2862 feet compared to K & H's distance of 2724.6 feet. As well as an angular difference (West Quarter Corner – Sperhake's Corner – Meander Corner) of 81°47'32" compared to K & H's angle of 86°46'. This caused more concern to Sperhake's Quarter Corner.

We looked at several options for resetting this corner and settled on setting it on a line from the Meander Corner to Southwest Corner of Section 23 at K & H's distance from said Meander Corner. This position puts the found 1 1/4 inch well point at the Center-of-Section 22, 0.51 feet south of the east – west quarter line and an angular comparison of 86°24'02" measured, 86°46' K & H record. We dug at this position and found evidence of a rotted cedar. Note area is upland, cut over hard woods, 5 to 10 feet south of roadway. Moving a Quarter Corner without strong original evidence is something not to be taken lightly. With that said, we feel we have no choice but to reset this corner based on the Keith & Hiles Lumber Company map.

