

CERTIFIED LAND CORNER RESTORATION

Index No. 0-12

012

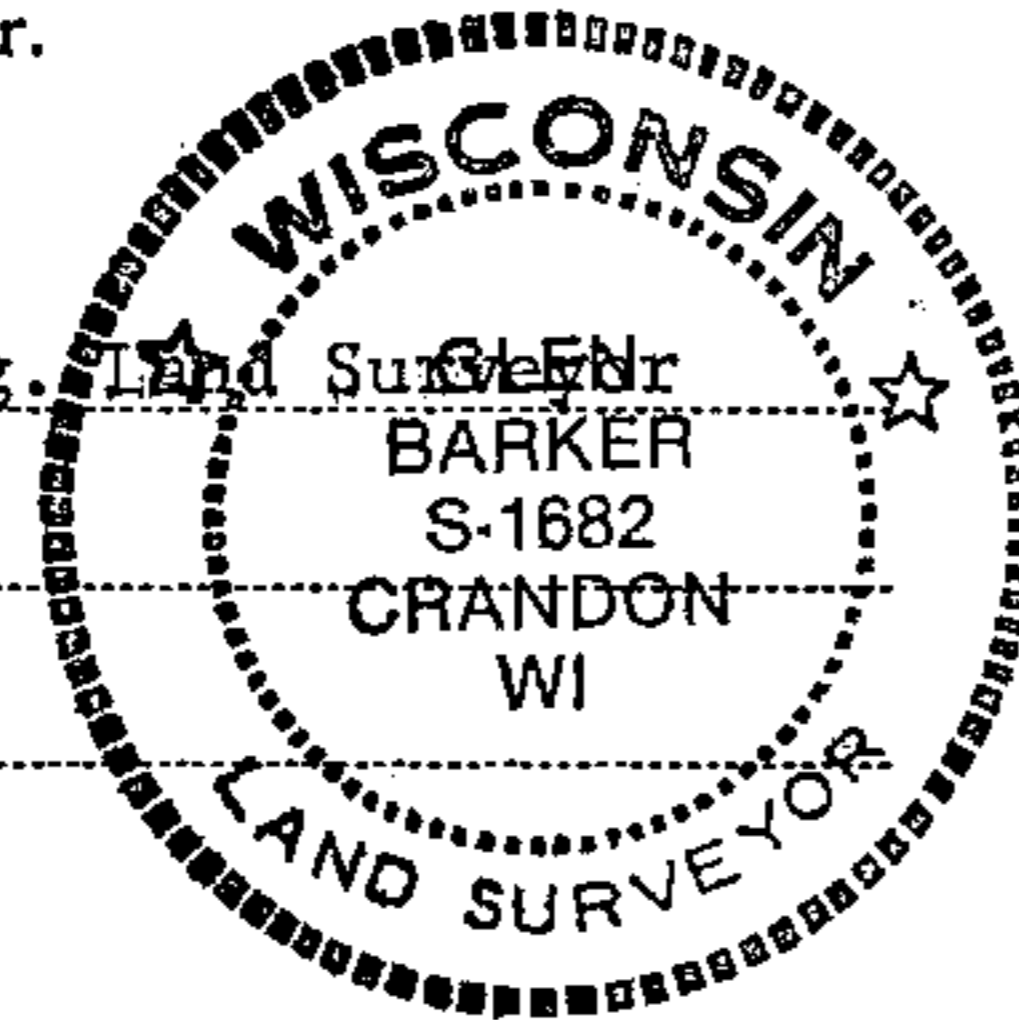
State of Wisconsin }
County of Forest } ss.

I, Glen Barker, do hereby certify that on the 28th day of October, 1982, I ~~found~~ established the NE 1/16 corner of Section 21 Township 35, North, Range 13 East, Fourth Principal Meridian, as described hereon; and that from this evidence I established a new monument and accessories as described hereon to perpetuate the original location of this corner.

Resident witnesses:

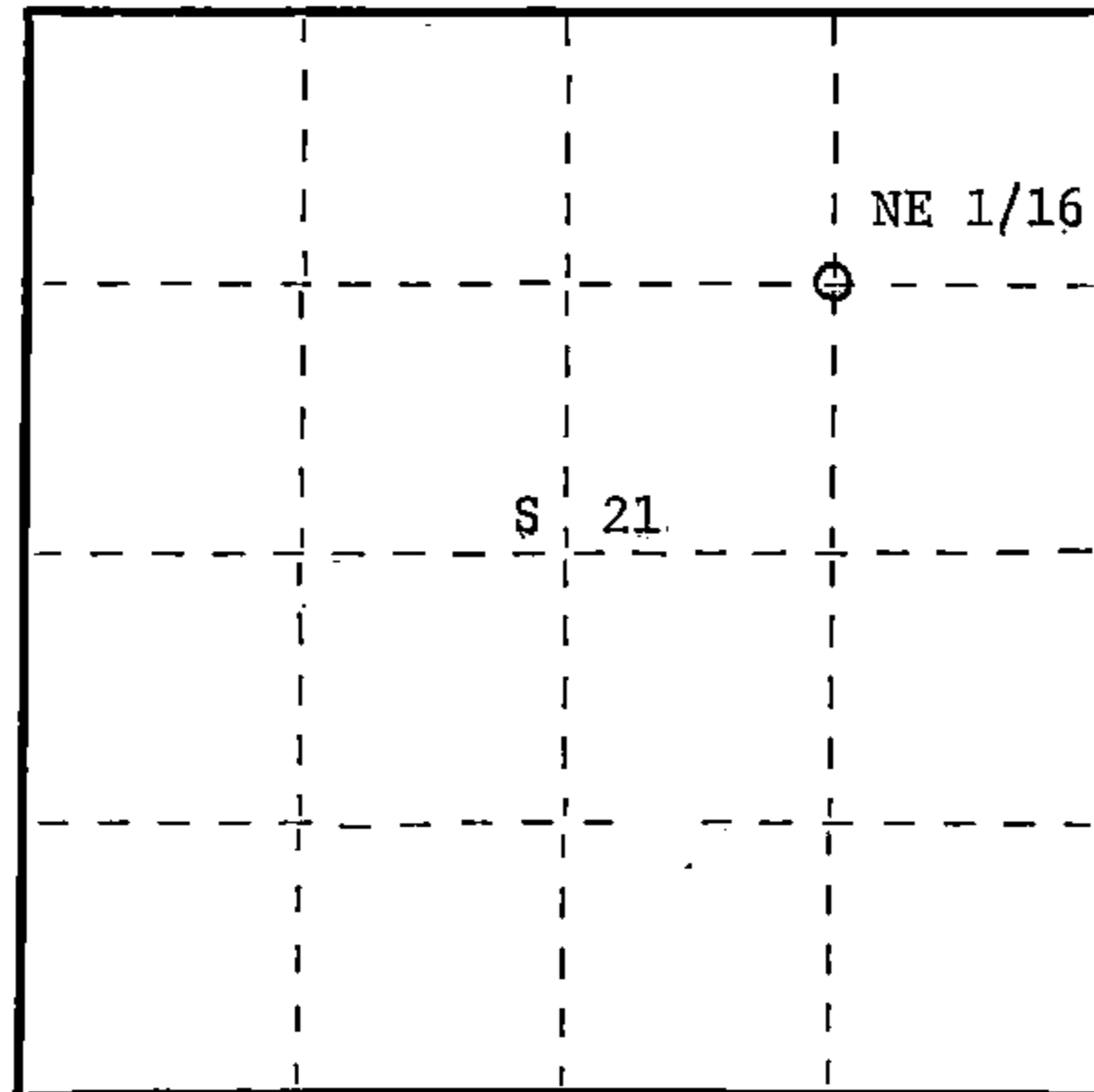
J. Claflin, Reg. Land Surveyor

H. Wagoner



FORM 985, R. C. MILLER CO., MILWAUKEE

T35N R13E



○ = Corner monument restored.

History of original corner establishment:

Corner established by C. Walker.
Recovered and remonumented by Thomas Arnott, Registered Land Surveyor.

Description of corner evidence found:

Corner established by subdivision of the NE 1/4.
Location of NE 1/16 is S88-54-13E 1308.95 feet of NC 1/16 and N2-01-58E 1308.94 feet of EC 1/16.

Description of monument and accessories I established to perpetuate the original location of this corner.

Our corner position falls south 3.50 feet of old NE 1/16 corner. Upon Thomas Arnott permission, we removed present monument and placed in our position the 2-1/2" A-1 monument stamped:

Marked NBT's:
Sugar 7" N51W 18.32 feet
Sugar 7" N50E 29.60 feet

NE 1/16
+
S 21
Forest County

Dated at Rhinelander, Wis., this 30th day of December, 1982

Signature Glen Barker Title Registered Land Surveyor Registration No. S-1682
(County Surveyor, Registered Land Surveyor, or other duly authorized official)

Office of Register of Deeds, County of Forest, I hereby certify that the within instrument was filed in this office for record on the 16th day of February, 1983 at 10:30 o'clock A. M.

Eugene Stutz
(Register of Deeds)
By _____ Deputy

DOCUMENT NO. 122912

43513213010