

CERTIFIED LAND CORNER RESTORATION

Index No. 0-13
013

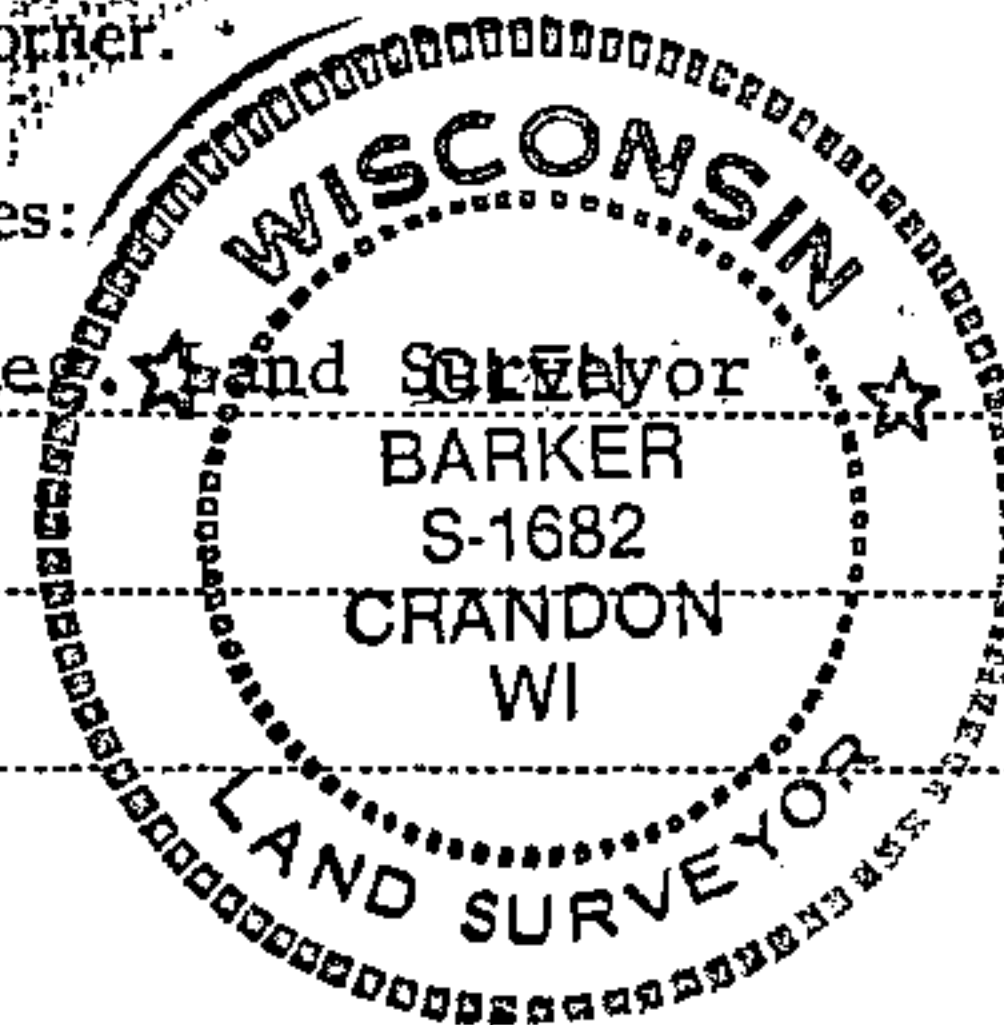
State of Wisconsin }
County of Forest } ss.

I, Glen Barker, do hereby certify that on the 14th day of October, 1982, I ~~found~~ established N 1/16 corner of Section 21 & 22 Township 35, North, Range 13 East, Fourth Principal Meridian, as described hereon; and that from this evidence I established a new monument and accessories as described hereon to perpetuate the original location of this corner.

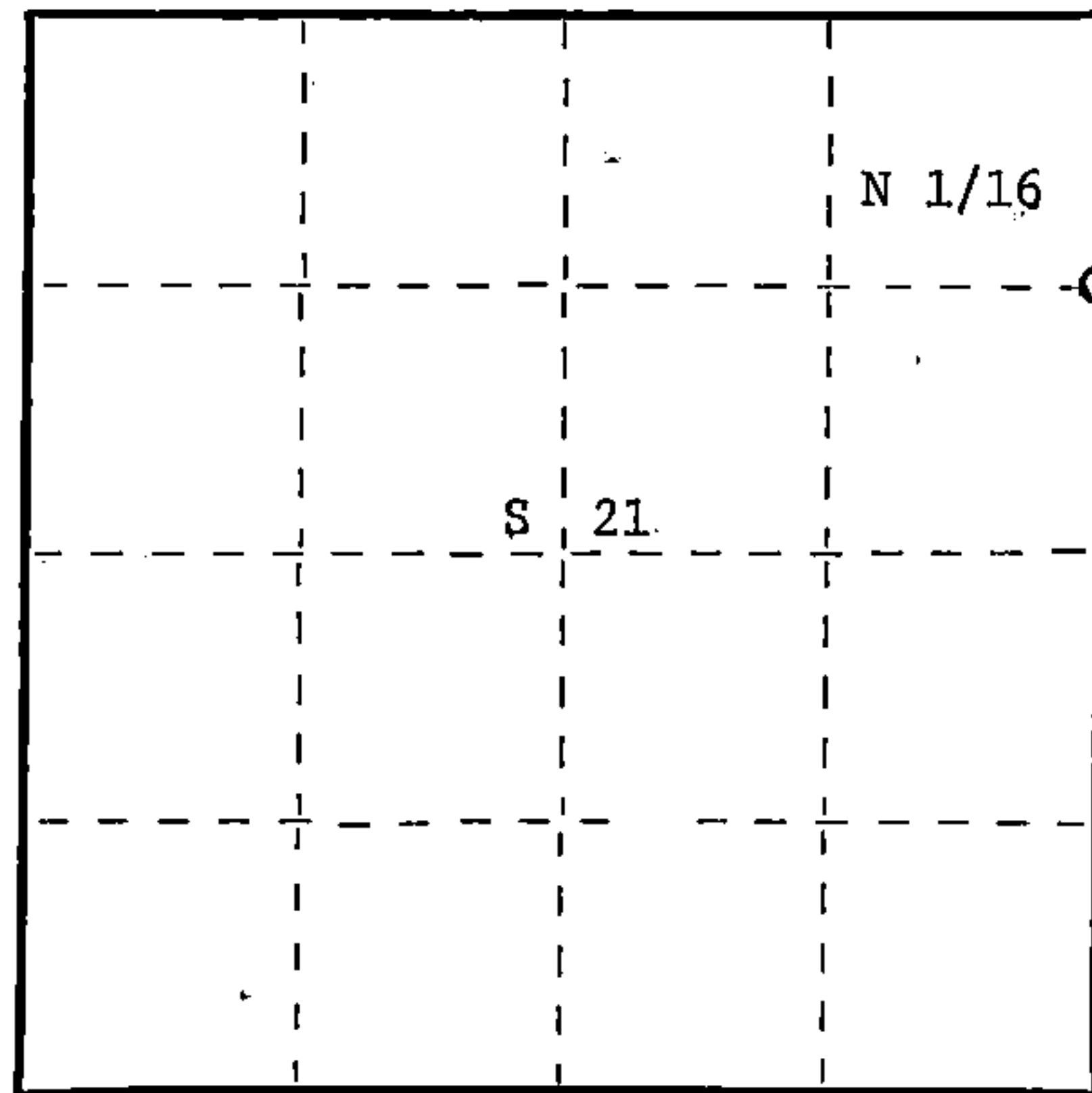
Resident witnesses:

J. Claflin, Registrar

H. Wagoner



T35N R13E



○ = Corner monument restored.

History of original corner establishment:

Old squared cedar post may have been set by C. Walker.

Description of corner evidence found:

- Total distance from section corner 15-16-21-22 to 1/4 corner between sections 21 & 22 is 2600.94 feet at bearing S1-58-33W.
- Set N 1/16 1300.947 feet intermediate.
- Old squared cedar post and 1-1/2" iron pipe bears S2°W 63.00 feet of our position.

Description of monument and accessories I established to perpetuate the original location of this corner.

- Set a 1" iron pipe with 2" diameter alloy cap, stamped: Monument projects 18" above ground.
- Maple 5" N35W 31.0 feet.
- Maple 5" S67E 27.70 feet.
- scribed 1/16-B.T.

S1682
T35N R13E
N 1/16 21 | 22
CPI - 1982

43513213000

Dated at Rhinelander, Wis., this 30th day of December, 1982

Signature Glen Barker Title Registered Land Surveyor Registration No. S-1682
(County Surveyor, Registered Land Surveyor, or other duly authorized official)

Office of Register of Deeds, County of Forest, I hereby certify that the within instrument was filed in this office for record on the 16th day of February, 1983 at 10:30 o'clock A. M.

Eugene Staszny
(Register of Deeds)

DOCUMENT NO. **122913**

By.....Deputy