

CERTIFIED LAND CORNER RESTORATION

Index No. P-12
P12

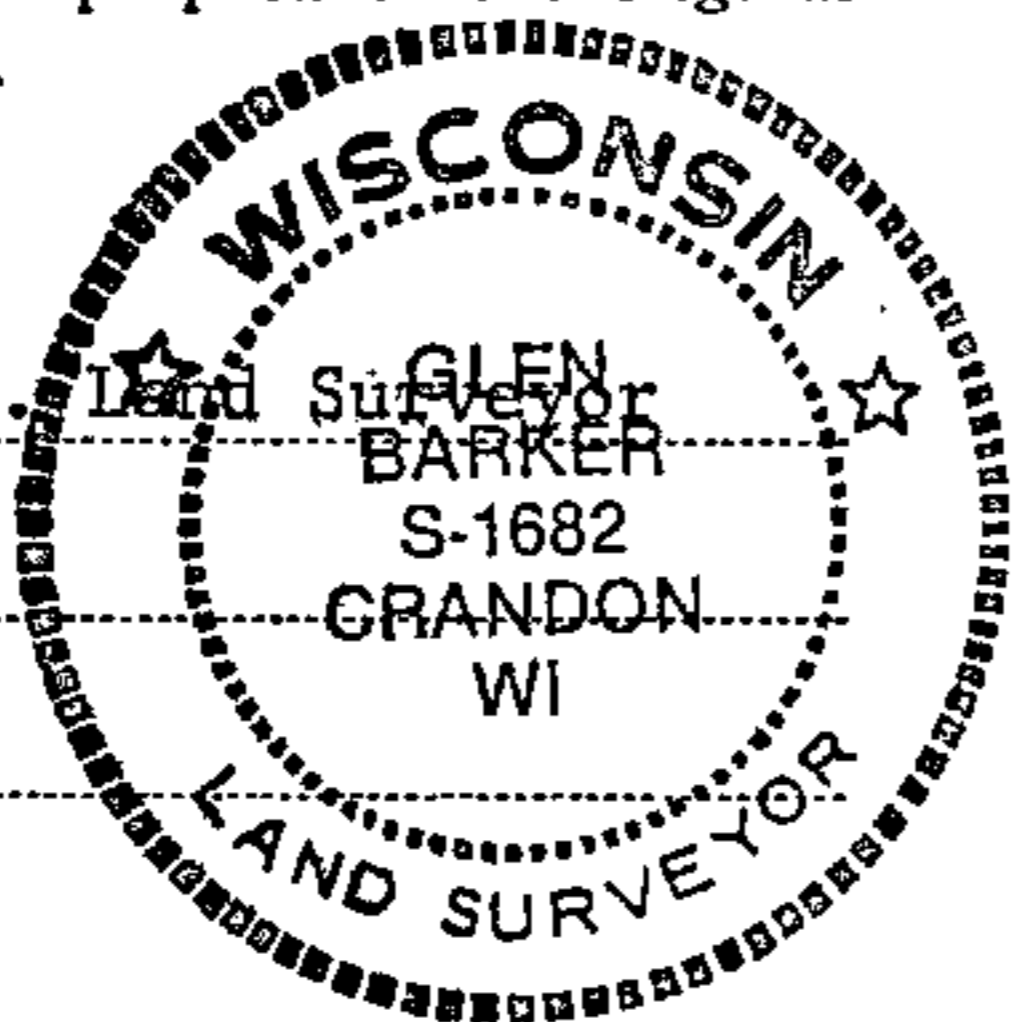
State of Wisconsin }
County of Forest } ss.

I Glen Barker, do hereby certify that on the 28th day of October, 1982, I ~~found~~ established ~~the~~ EC 1/16 corner of Section 21 Township 35, North, Range 13 East, Fourth Principal Meridian, as described hereon; and that from this evidence I established a new monument and accessories as described hereon to perpetuate the original location of this corner.

Resident witnesses:

J. Claflin, Reg.

H. Wagoner



History of original corner establishment:

Corner established by C. Walker.

Description of corner evidence found:

Total distance from 1/4 corner between sections 21 & 22 to C 1/4 section 21 is 2620.83 feet at bearing N89-16-23W. Set EC 1/16 1310.415 ft. intermediate. Old squared cedar post and 2" iron pipe bears S70W 3.80 ft. of our position.

Description of monument and accessories I established to perpetuate the original location of this corner.

Set a 1" iron pipe with 2" diameter alloy cap, stamped: Monument projects 18" above ground.

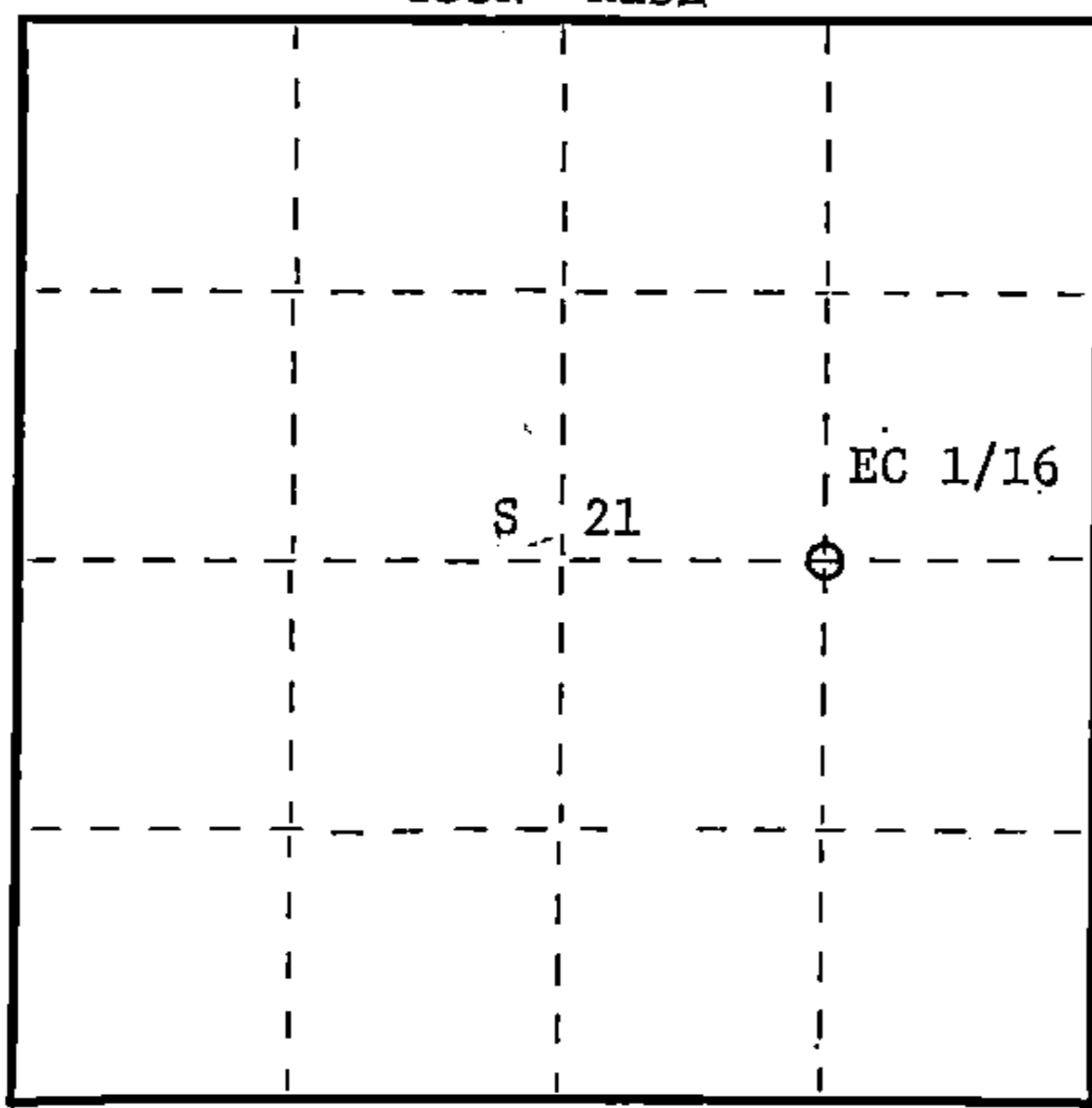
Marked NBT's:

Sugar 7" S54°W 11.34 feet
Sugar 6" S79°E 20.55 feet
scribed 1/16 B.T.

S1682
T35N R13E
EC 1/16 S | 21
CPI - 1982

FORM 985 K. C. MILLER CO., MILWAUKEE

T35N R13E



○ = Corner monument restored.

Dated at Rhineland, Wis., this 30th day of December, 1982

Signature Glen Barker Title Registered Land Surveyor Registration No. S1682
(County Surveyor, Registered Land Surveyor, or other duly authorized official)

Office of Register of Deeds, County of Forest, I hereby certify that the within instrument was filed in this office for record on the 16th day of February, 1983 at 10:30 o'clock A. M.

Eugene Stasny
(Register of Deeds)

DOCUMENT NO. **122914**

By.....Deputy

43513212010