

JAN 16 2018

Time: 8:30 A.M.
Vol.: Corner Restoration
Page Number: J-K 5

U.S. PUBLIC LAND SURVEY MONUMENT RECORD

(Prepared and as required by S. A-E 7.08 Wi Administrative Code)

Corner was: (check all that apply)

- Restored through acceptance of an obliterated evidence location
- Restored through acceptance of a found perpetuated location
- Determined to be lost and reestablished through proportionate methods.
(Show bearings and distances to PLSS corners used for proportioning)
- Restored/recovered/reestablished in a location that differs from a previously established position. (Show difference in plan view below.)
- Check here if additional information is shown on the reverse side of this form

Describe record evidence, recovered physical evidence, occupational evidence, testimonial evidence and all other evidence considered in the recovery/restoration of corner.

1865 - Original Corner established by James L. Nowlin
Original BT'S: SPRUCE 8" N46°E 10 LINKS
BIRCH 10" N65°W 4 LINKS

1960 - Phil Hansen located corner on retracement of north line from N1/4 Section 18 onto lake at 2640 feet and from N1/4 Section 17 onto lake, corner in lake established mid point between two stakes. Then running North from W 1/4 Section 17 to midpoint in lake, established MC at 2111.60 feet North of W 1/4 corner.
At MC Corner between Sections 17 and 18 tied two BT'S and one accessory.
BT'S: ELM 26" NE 11.55 FEET
ELM 7" WEST 13/3 FEET
Accessory
WEST EDGE OF EAST CONCRETE WING OF DAM 86.5 FEET EAST



2019 - Dean A. Williams, James Gardner traversed North from W 1/4 Section 17 through N 1/16 Corner, Sections 17 and 18 at 1322 feet, continued North record 789.60 feet, and used remaining accessory Dam at 85.5 feet east.
Accepted as best possible evidence of corner location.

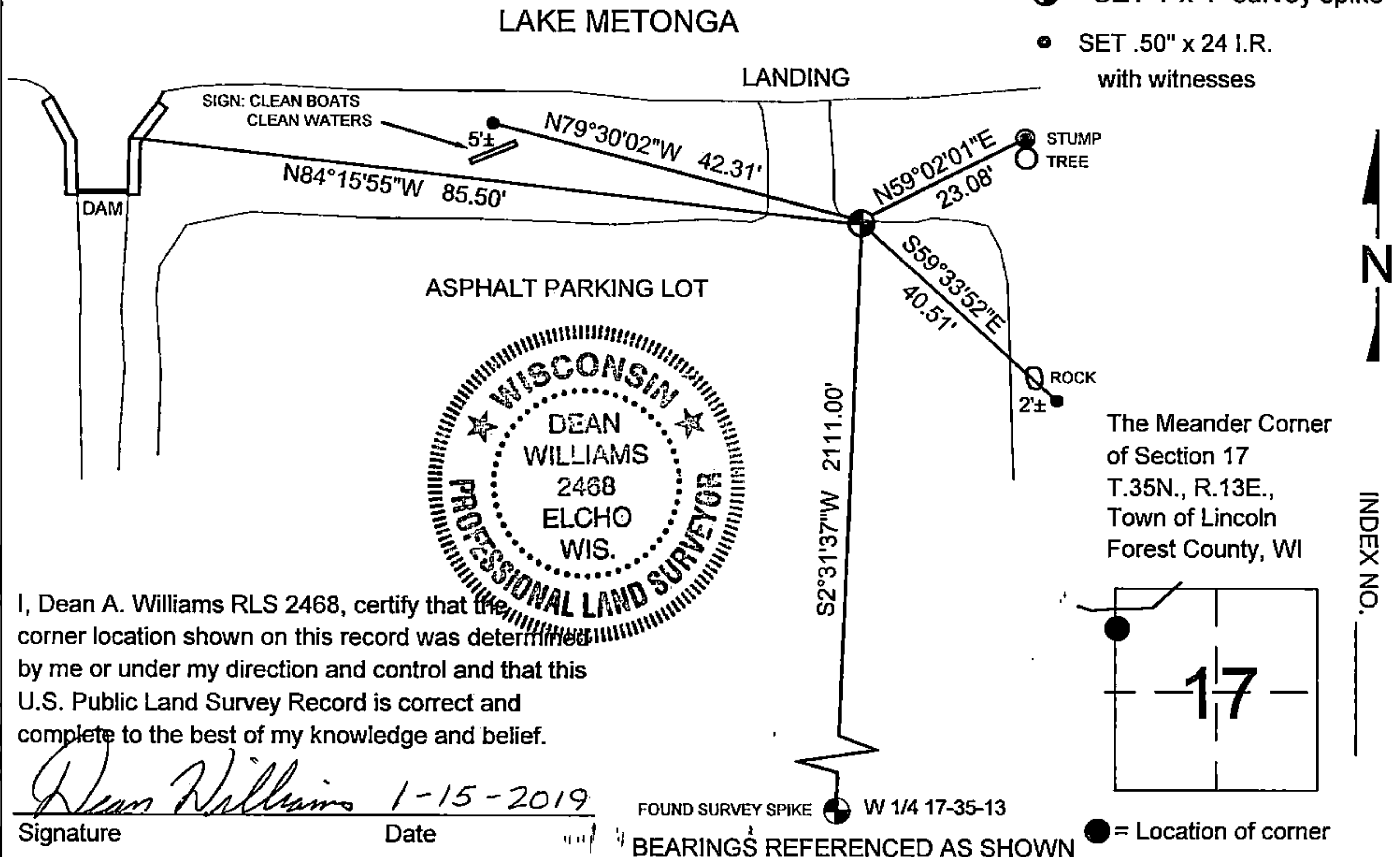
Physical description of the monument set:

2019 - Dean A. Williams Set 1" x 4" survey spike in edge of asphalt parking lot for county park by lake landing.

Describe the accessories used to perpetuate the location of the corner. Include a plan view drawing and indicate accessories found/set. Describe measuring point on bearing trees. Show any topographic features that would aid in future recovery of the corner.

LEGEND

-  SET 1"x 4" survey spike
-  SET .50" x 24 I.R. with witnesses



I, Dean A. Williams RLS 2468, certify that the corner location shown on this record was determined by me or under my direction and control and that this U.S. Public Land Survey Record is correct and complete to the best of my knowledge and belief.

Dean Williams 1-15-2019
Signature Date

FOUND SURVEY SPIKE W 1/4 17-35-13

BEARINGS REFERENCED AS SHOWN

● = Location of corner

INDEX NO.

J-K 5