

241613

REGISTER OF DEEDS OFFICE
FOREST COUNTY
FILED

NOV 08 2023

CORTNEY BRITTEN CLEEREMAN
REGISTER OF DEEDS

U S PUBLIC LAND SURVEY MONUMENT RECORD

NOTE: This form is intended and designed to fulfill all requirements of Wisconsin Administrative Code, Chapter A-E 7.08 U.S. Public Land Survey Monument Record (3) (a-i)

A-E 7.08(3)(a) Identity of corner:
EAST 1/4 CORNER SECTION 18,
TOWNSHIP 35 NORTH,
RANGE 13 EAST OF THE 4TH PM,
TOWN OF LINCOLN,
COUNTY OF FOREST

WISCRS - FOREST COUNTY
N: 550,842.49 USft (XXX,XXX.XXX)
E: 836,003.302 USft (XXX,XXX.XXX)
Datum: NAD83 (2011)
GNSS Method RTK
GNSS Control WISCRS VRS



The coordinate value shown has been verified by the average of two or more GPS observations at a markedly different time. Coordinates shown in parenthesis are previously published values.

A-E 7.08(3)(b)

Original Surveyor: James L. Nowlin

Date of Original Survey	Commenced:	September 11, 1865	Original Accessories:
	Completed:	September 21, 1865	Hemlock 12 S 65° W 12 Links
			Hemlock 10 N 33° E 20 Links

THENCE:

May 26, 2004 - Surveyor 1451 - Eugene C. Uttech - indicate this position as "PK nail, set" on Forest Co. Surveyor File #351318-20040526.

November 17, 2008 - Surveyor 2197 - Michael A. Tremel - indicate this position as "existing PK nail" on Forest Co. Surveyor File #351317-20081117.

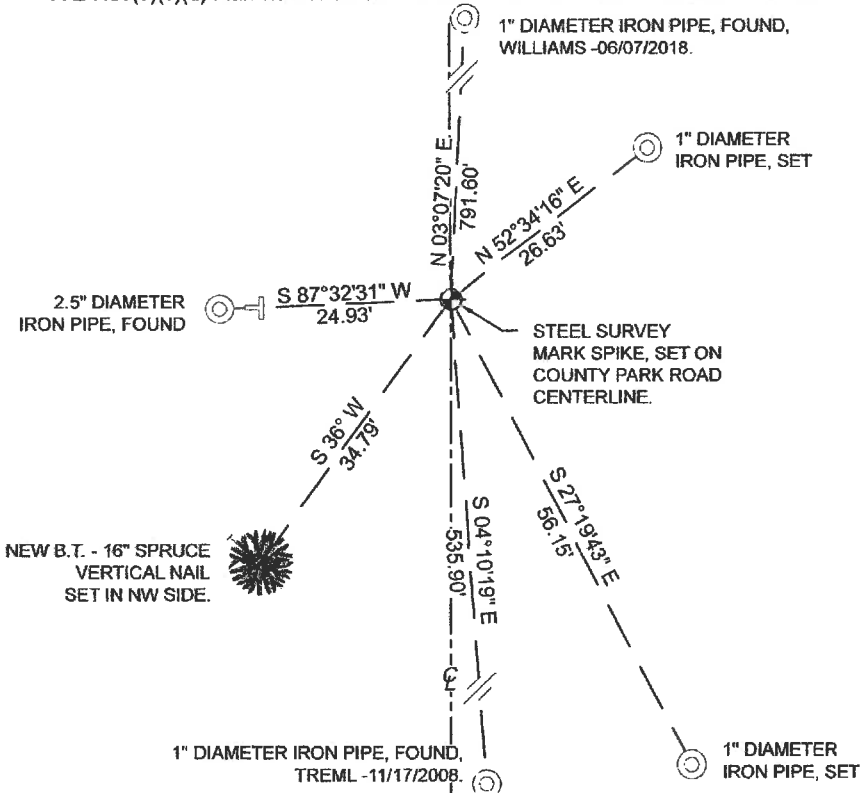
October 7, 2016 - Surveyor 1451 - Eugene C. Uttech - indicate this position as "Mag nail (found)" on Forest Co. Surveyor File #351318-20161007.

June 7, 2018 - Surveyor 2468 - Dean Williams - indicates this position as "found survey nail" on Forest County Surveyor File 351317-20180607.

April 10, 2023 - I set a steel survey mark spike 3" long with a 1" diameter head, from the November 17, 2008 Tremel Survey and the June 7, 2018 Williams Survey. I established 6 new reference monuments as shown below.

A-E 7.08(3)(c)(d) Plan view of corner with references to at least 4 witness monuments.

BEARINGS LISTED TO THE NEAREST
SECOND ARE REFERENCED TO WISCONSIN
COUNTY COORDINATE REFERENCE
SYSTEM - FOREST COUNTY ZONE.
ALL OTHER BEARINGS ARE MAGNETIC.



LEGEND

- THIS CORNER
- Iron pipe, as noted
- Vinyl T-post, set ±1 foot east of pipe.



A-E 7.08(3)(e) 1865 Surveyor set a post, 2004 Surveyor set a PK nail, 2008 Surveyor found a PK nail, 2016 Surveyor found a Mag nail, 2018 Surveyor found a survey nail. I set a steel survey mark spike 3" long with a 1" diameter head at the location shown by the 2008, and 2018 Surveyors.

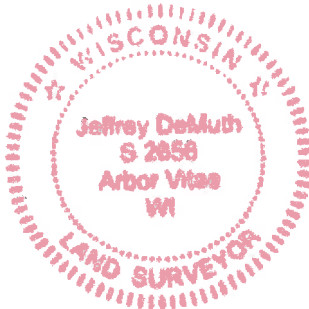
A-E 7.08(3)(f) I restored the corner through ACCEPTANCE OF AN OBLITERATED LOCATION.

A-E 7.08(3)(g)(h) This corner was not determined through lost-corner-proportionate methods.

A-E 7.08(3)(i) I, Jeffrey L. DeMuth, Professional Land Surveyor No. S-2656, hereby certify that the corner location on this record was determined by me or under my direction and control, and that this U.S. Public Land Survey Monument Record is correct and complete to the best of my knowledge, and belief.

SIGNATURE

June 1, 2023
DATE



43513182000

L5