

CERTIFIED LAND CORNER RESTORATION

Index No. K-22

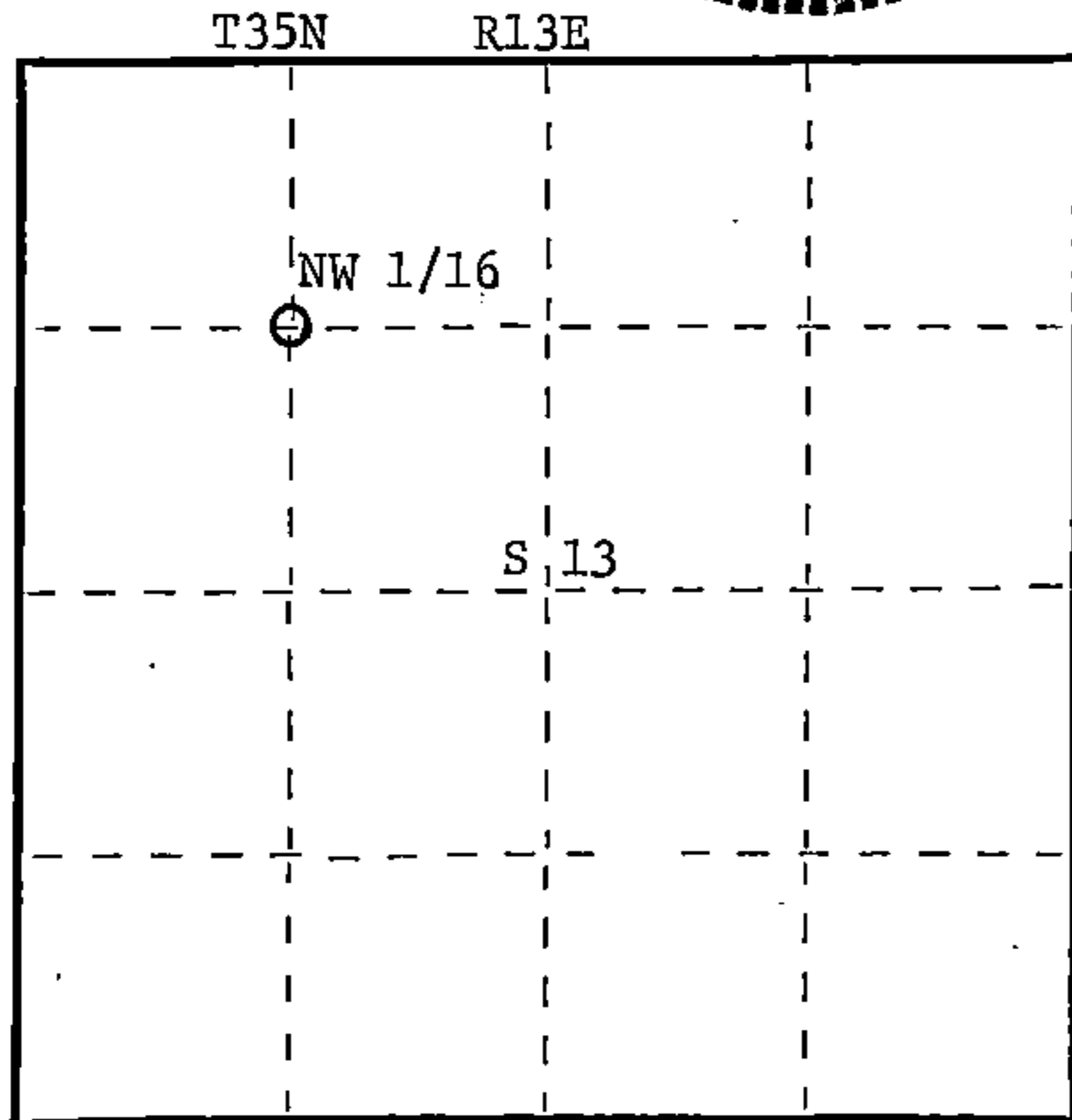
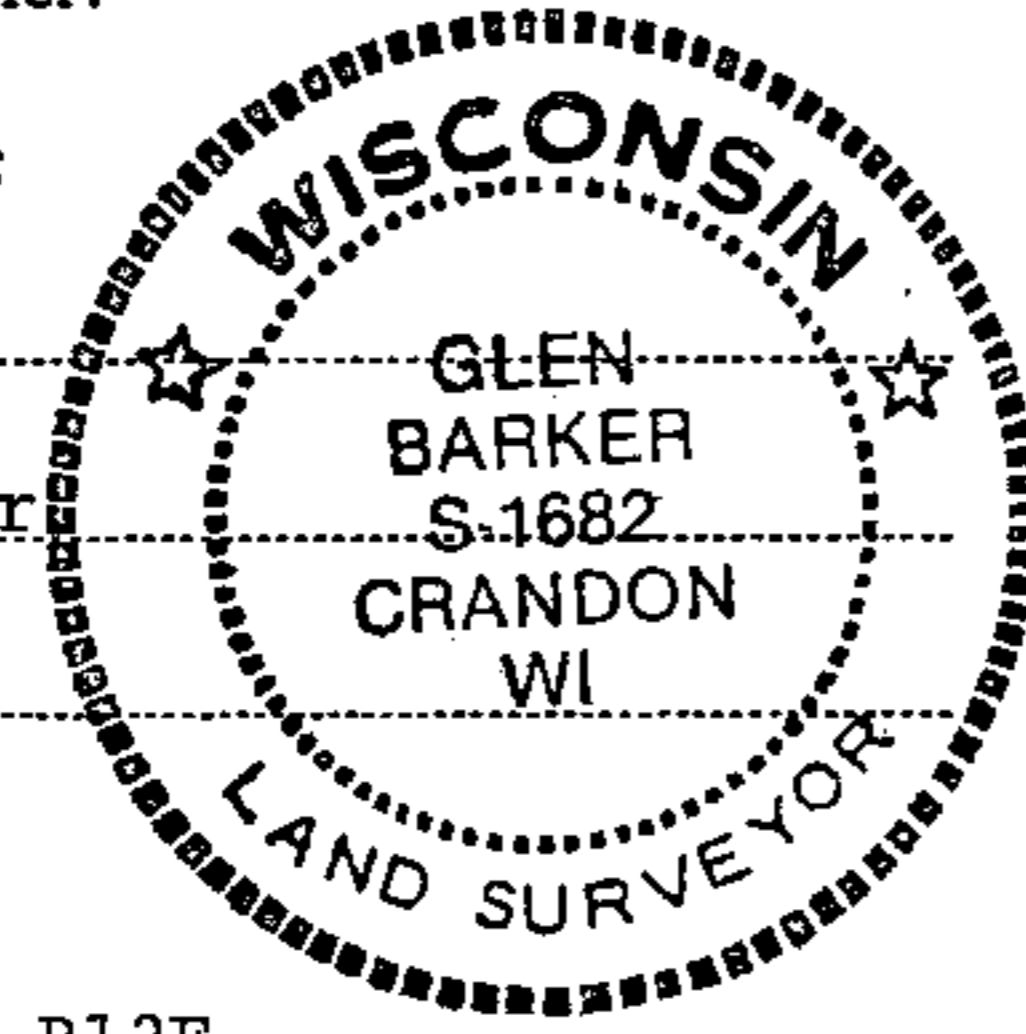
State of Wisconsin }
County of Forest } ss.

I Glen Barker, do hereby certify that on the 14th day of September, 19 84, I ~~found~~ established NW 1/16 corner of Section 13 Township 35, North, Range 13 East, Fourth Principal Meridian, as described hereon; and that from this evidence I established a new monument and accessories as described hereon to perpetuate the original location of this corner.

Resident witnesses:

N. Spiess

H. Wagoner



○ = Corner monument restored.

History of original corner establishment:

3"x3" wood post set by Kimberly Clark Corp. in 1964. Post set by compass and is not of record.

Description of corner evidence found:

Corner established by subdivision of the NW 1/4. Location of the NW 1/16 is 1296.47' of NC 1/16 and 1309.98' of WC 1/16.

3"x3" wood post bears S21W 6.0'

Description of monument and accessories I established to perpetuate the original location of this corner.

Set a 1" iron pipe with 2" diameter alloy cap stamped: S1682

Monument projects 18" above ground. T35N

Marked NBTs:

Sugar 6" N87W 14.39'
Sugar 7" S54E 11.61'

NW 1/16 S 13

R13E

CPI - 1984

Dated at Rhinelander, Wis., this 12th day of October, 19 84.

Signature Glen Barker Title Registered Land Surveyor Registration No. 1682
(County Surveyor, Registered Land Surveyor, or other duly authorized official)

Office of Register of Deeds, County of Forest, I hereby certify that the within instrument was filed in this office for record on the 20th day of December, 19 84 at 1:15 o'clock P. M.

Eugene Stagny
(Register of Deeds)
By _____ Deputy

Document Number **126950**

FORM 985 H. C. MILLER CO., MILWAUKEE

43513133030