

CERTIFIED LAND CORNER RESTORATION

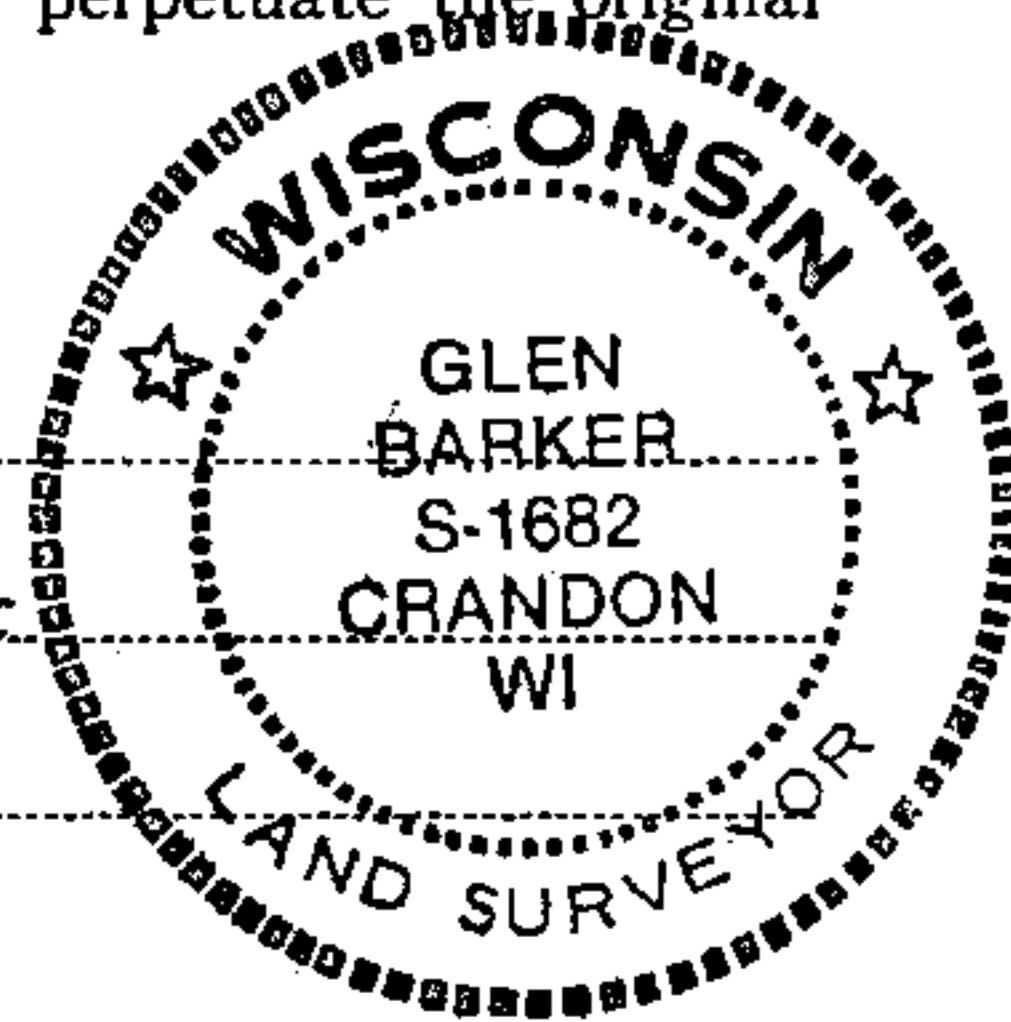
State of Wisconsin }  
County of Forest } ss.

I Glen Barker, do hereby certify that on the 13th day of September, 1984, I found evidence of the WC 1/16 corner of Section 13 Township 35, North, Range 13 East, Fourth Principal Meridian, as described hereon; and that from this evidence I established a new monument and accessories as described hereon to perpetuate the original location of this corner.

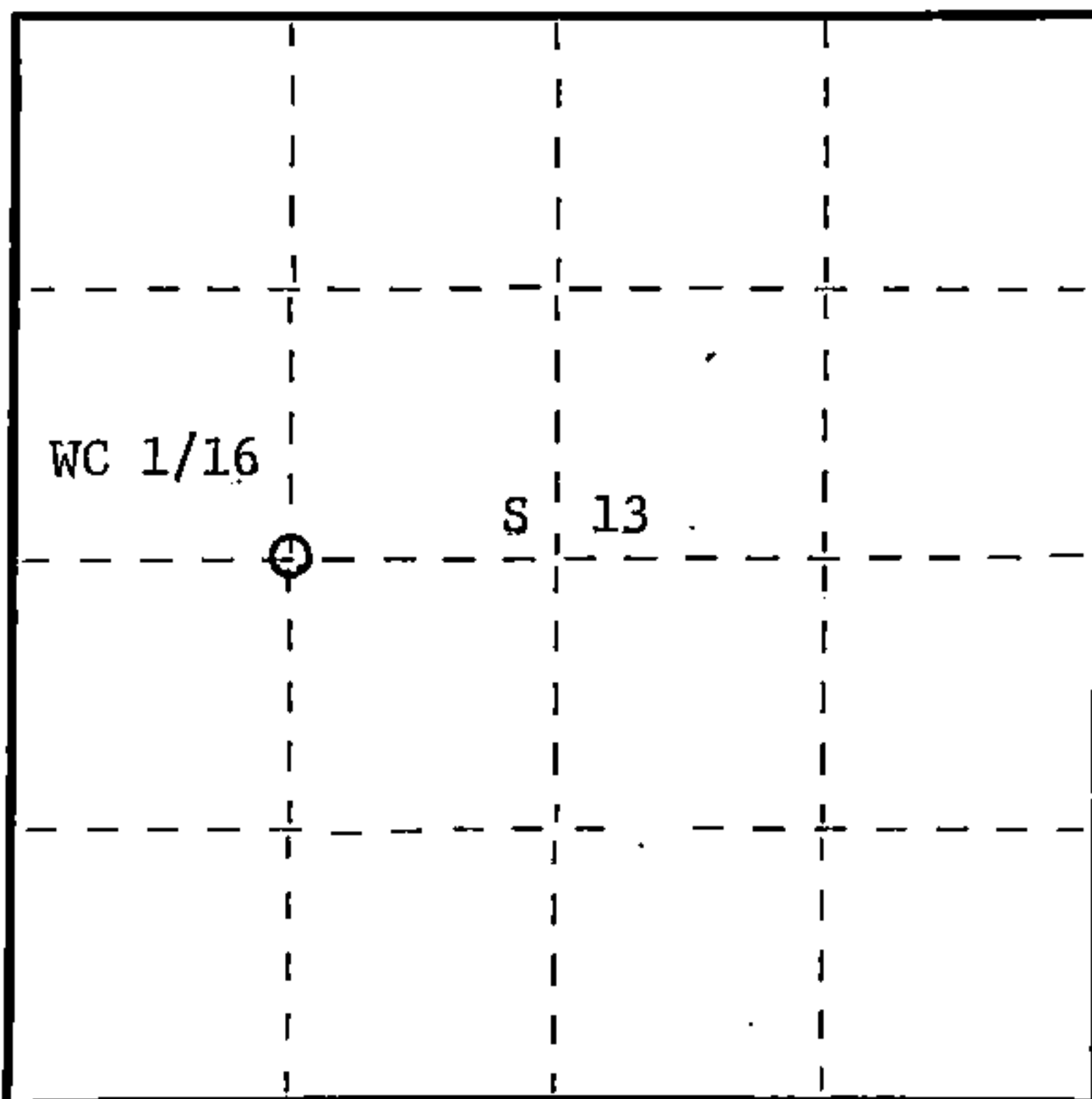
Resident witnesses:

N. Spiess

H. Wagoner



T35N R13E



○ = Corner monument restored.

History of original corner establishment:

3"x3" wood post set by Kimberly Clark Corp. in 1964. Post set by compass and is not of record.

Description of corner evidence found:

Total distance from 1/4 corner between Sections 13 & 14 to C 1/4 Section 13 is 2601.57'.  
Set WC 1/16 1300.78' intermediate.

3"x3" wood post bears S14E 9.30'

Description of monument and accessories I established to perpetuate the original location of this corner.

Set a 1" iron pipe with 2" diameter alloy cap stamped: S1682

Monument projects 18" above ground. T35N

Marked NBTs: WC 1/16 S 13

Sugar 6" N79E 13.86'

Sugar 8" N35W 23.25'

R13E

CPI - 1984

Dated at Rhineland, Wis., this 12th day of October, 1984.

Signature Glen Barker Title Registered Land Surveyor Registration No. 1682

(County Surveyor, Registered Land Surveyor, or other duly authorized official)

Office of Register of Deeds, County of Forest, I hereby certify that the within instrument was filed in this office for record on the 20th day of December, 1984 at 1:15 o'clock P. M.

Eugene Staszny  
(Register of Deeds)

Document Number **126954**

By \_\_\_\_\_ Deputy

FORM 985 H. C. MILLER CO., MILWAUKEE

43513132030