

CERTIFIED LAND CORNER RESTORATION

Index No. **E-23**

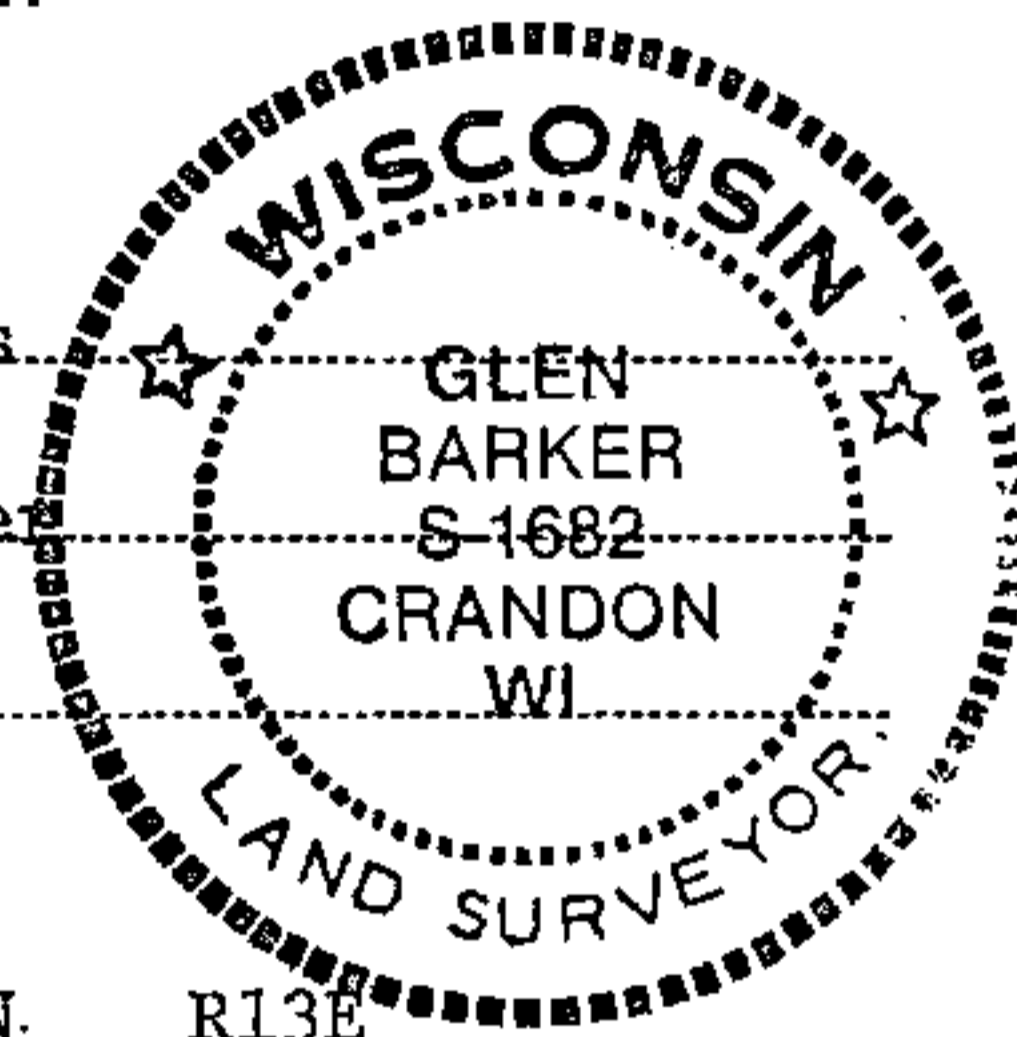
State of Wisconsin }
County of Forest } ss.

I Glen Barker, do hereby certify that on the 29th day of September, 1984, I ~~found~~ established ~~corner~~ of the C 1/4 corner of Section 13 Township 35, North, Range 13-East, Fourth Principal Meridian, as described hereon; and that from this evidence I established a new monument and accessories as described hereon to perpetuate the original location of this corner.

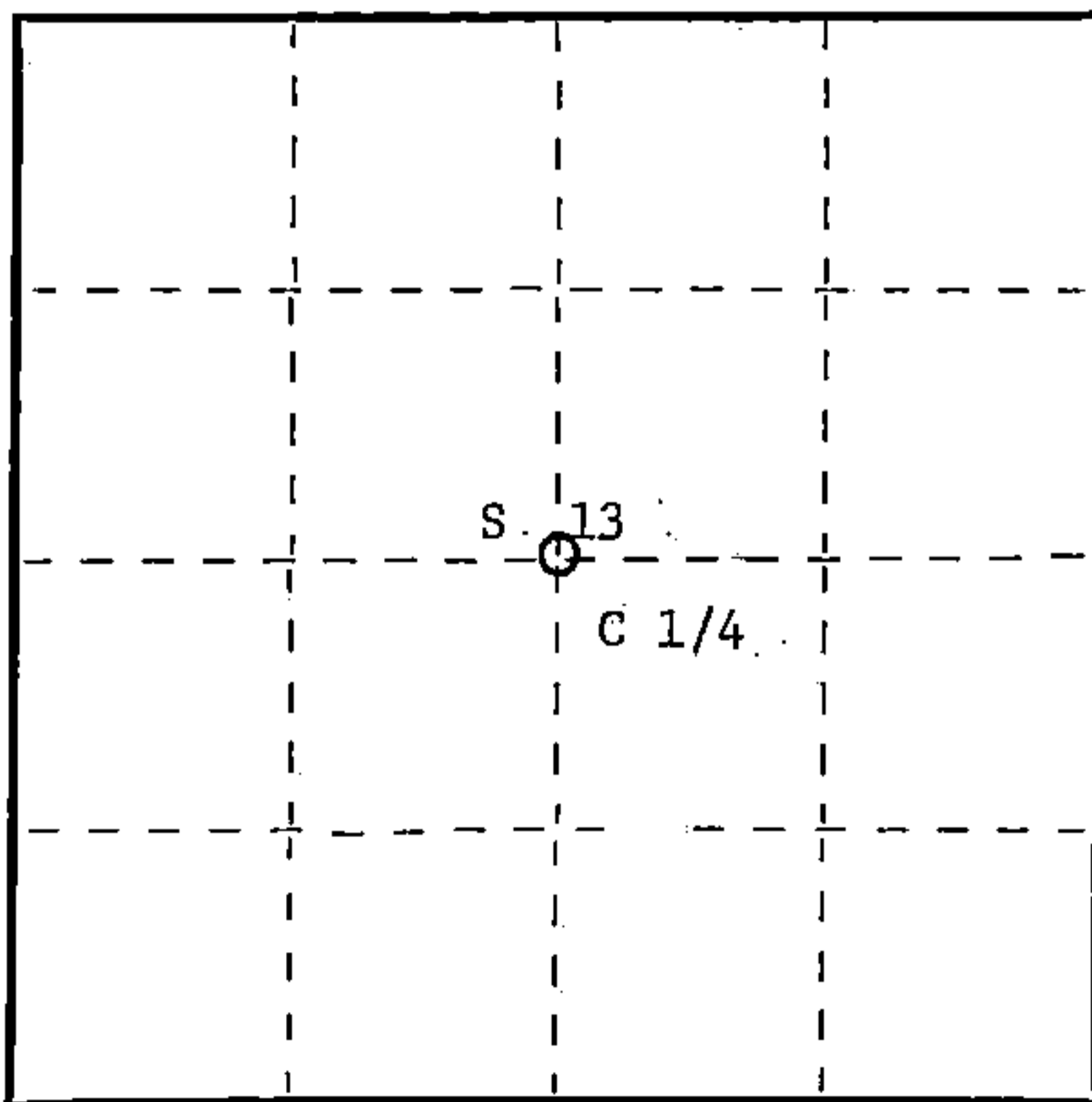
Resident witnesses:

N. Spiess

H. Wagoner



T35N. R13E



○ = Corner monument restored.

History of original corner establishment:

3"x3" wood post set by Kimberly Clark Corp. in 1964.
Post set by compass and is not a recorded corner.

Description of corner evidence found:

Corner established by subdivision of Section 13-35-13.
Location of C 1/4 is 2601.47' of N 1/4 corner
2596.78' of E 1/4 corner
2641.30' of S 1/4 corner
2601.57' of W 1/4 corner
3"x3" wood post bears S43W 14.0'

Description of monument and accessories I established to perpetuate the original location of this corner.

Set a 2 1/2" aluminum pipe with 3" diameter alloy cap stamped:

Monument projects 8" above ground.

Marked NBTs:

Sugar 8" N43W 8.81'
Sugar 8" S71E 34.92'
Sugar 6" S14W 35.35'

T35N R13E

C 1/4 S 13

S1682 - 1984
CPI

Dated at Rhineclander, Wis., this 12th day of October, 1984.

Signature Glen Barker Title Registered Land Surveyor Registration No. 1682
(County Surveyor, Registered Land Surveyor, or other duly authorized official)

Office of Register of Deeds, County of Forest I hereby certify that the within instrument was filed in this office for record on the 20th day of December, 1984 at 1:15 o'clock P. M.

Roger A. Stetson
(Register of Deeds)

By _____ Deputy

Document Number **126955**

FORM 985 H. C. MILLER CO., MILWAUKEE

43513132020