

CERTIFIED LAND CORNER RESTORATION

Index No. **E-24**

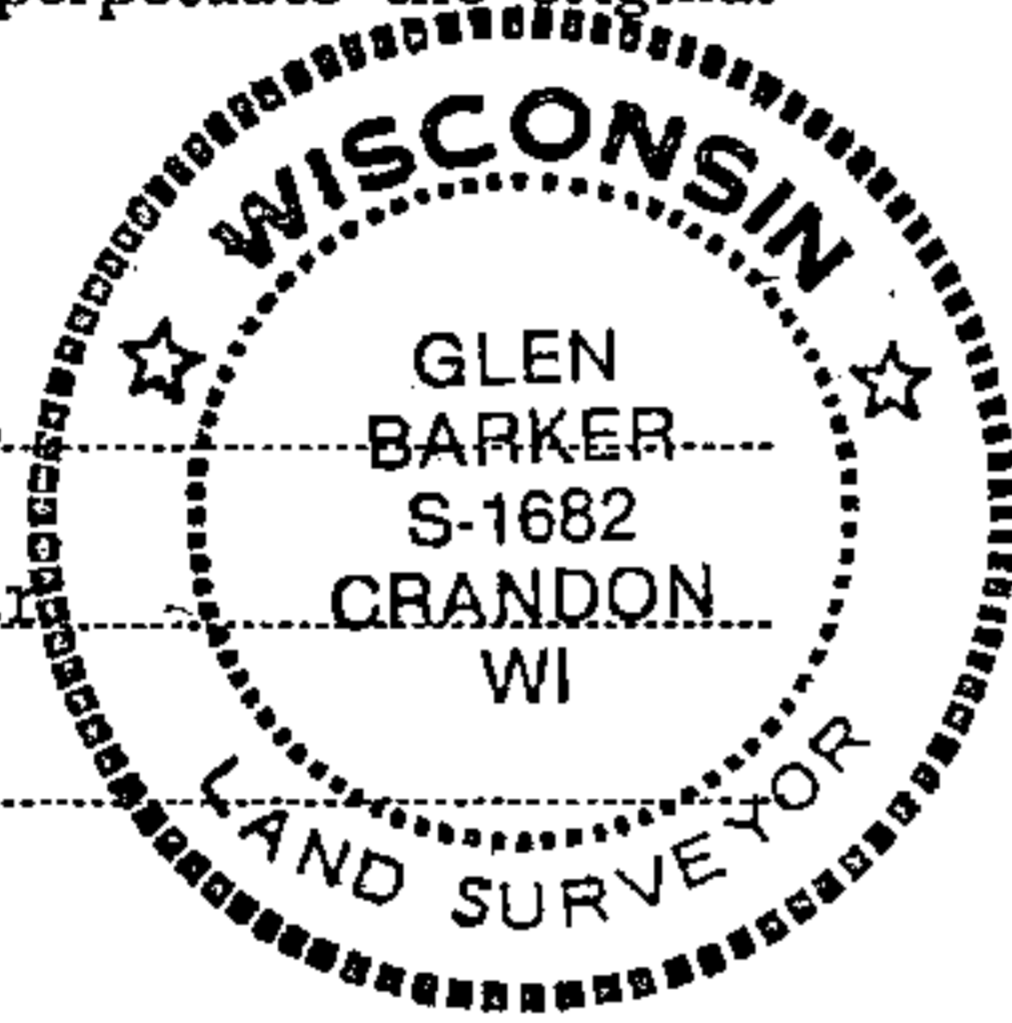
State of Wisconsin }  
County of Forest } ss.

I Glen Barker, do hereby certify that on the 15th day of September, 1984, I found established EC 1/16 corner of Section 13 Township 35, North, Range 13 East, Fourth Principal Meridian, as described hereon; and that from this evidence I established a new monument and accessories as described hereon to perpetuate the original location of this corner.

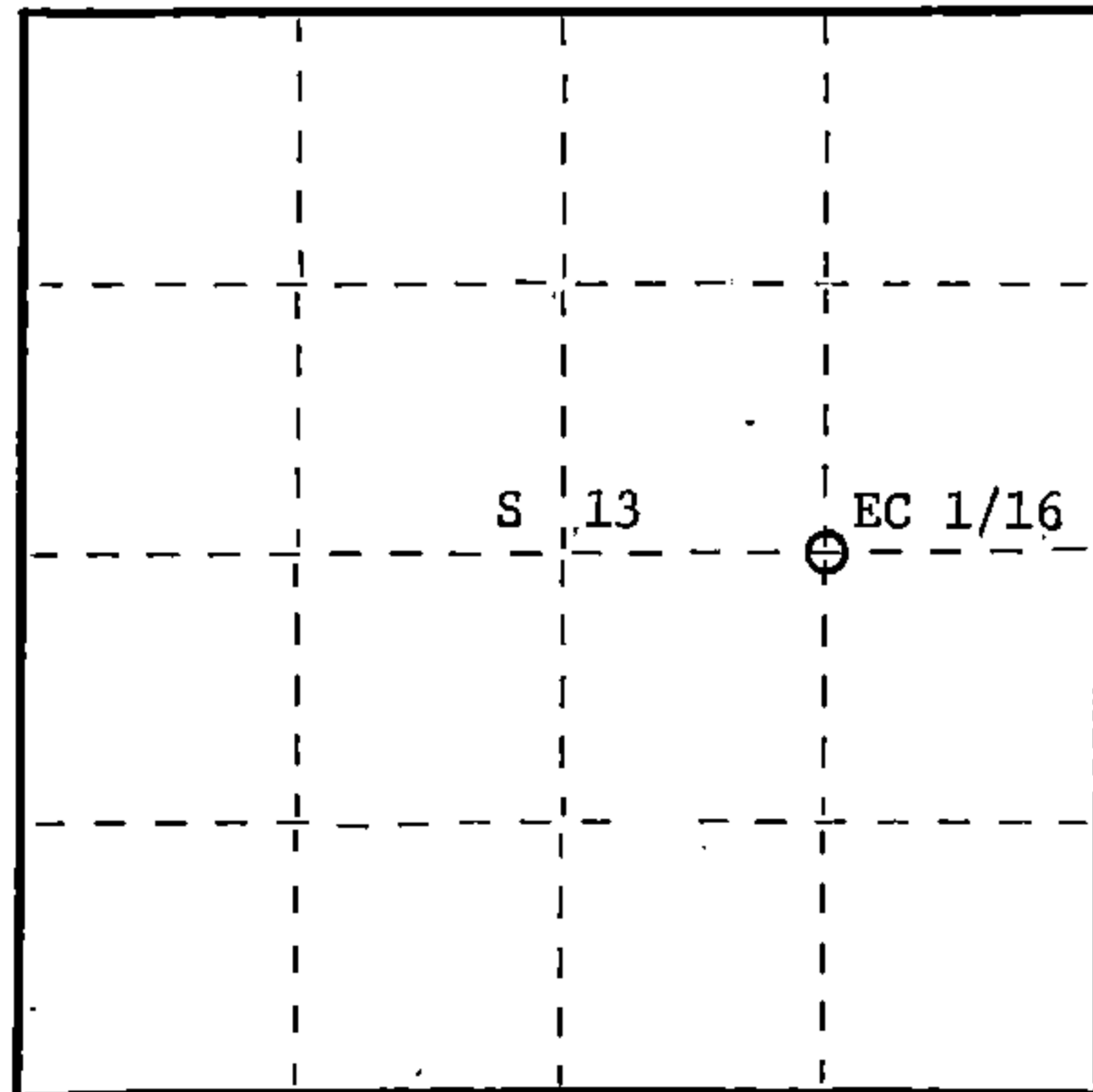
Resident witnesses:

N. Spiess

H. Wagoner



T35N R13E



○ = Corner monument restored.

History of original corner establishment:  
No evidence of any previous corner.

Description of corner evidence found:

Total distance from 1/4 corner between Sections 13 & 18 T35N R13 and 14E to C 1/4 Section 13, is 2596.78'.  
Set EC 1/16 1298.34' intermediate.

Description of monument and accessories I established to perpetuate the original location of this corner.

Set a 1" iron pipe with 2" diameter alloy cap stamped:  
Monument projects 18" above ground.

S1682

Marked NBTs:

T35N

Sugar 5" N72E 20.77'  
Y. Birch 8" S29E 26.92'

EC 1/16 S 13

R13E

CPI - 1984

Dated at Rhineland, Wis., this 12th day of October, 1984.

Signature Glen Barker Title Registered Land Surveyor Registration No. 1682  
(County Surveyor, Registered Land Surveyor, or other duly authorized official)

Office of Register of Deeds, County of Forest, I hereby certify that the within instrument was filed in this office for record on the 20th day of December, 1984 at 1:15 o'clock P. M.

Eugene Stegany  
(Register of Deeds)

Document Number **126956**

By \_\_\_\_\_ Deputy

FORM 965 H. C. MILLER CO., MILWAUKEE

43513132010