

STATE OF WISCONSIN

I NEAL SPERHAKE, do hereby certify that on the TWELFTH day of OCTOBER, 1962, I restored the NORTHEAST SECTION CORNER of SECTION 24, TOWNSHIP 35 NORTH, RANGE 13 EAST, Fourth Principal Meridian, as described hereon.

Resident Witnesses:

- Stanley Novak - Laona.
- Richard Piontek - Waubeno.
- David Pichotta - Waubeno.

History of original corner establishment:

This corner can also be described as: THE SECTION CORNER BETWEEN SECTIONS 13 AND 24, T35N-R13E, AND 18 AND 19, T35N-R14E, 4TH P.M.

This corner was established during the original survey of this township, as noted in the Original Field Notes for the Original Survey of T35N-R13E, 4th p.m.

Description of monument and accessories I established to perpetuate the location of this corner.

At the point determined for the location of the corner I emplaced a:

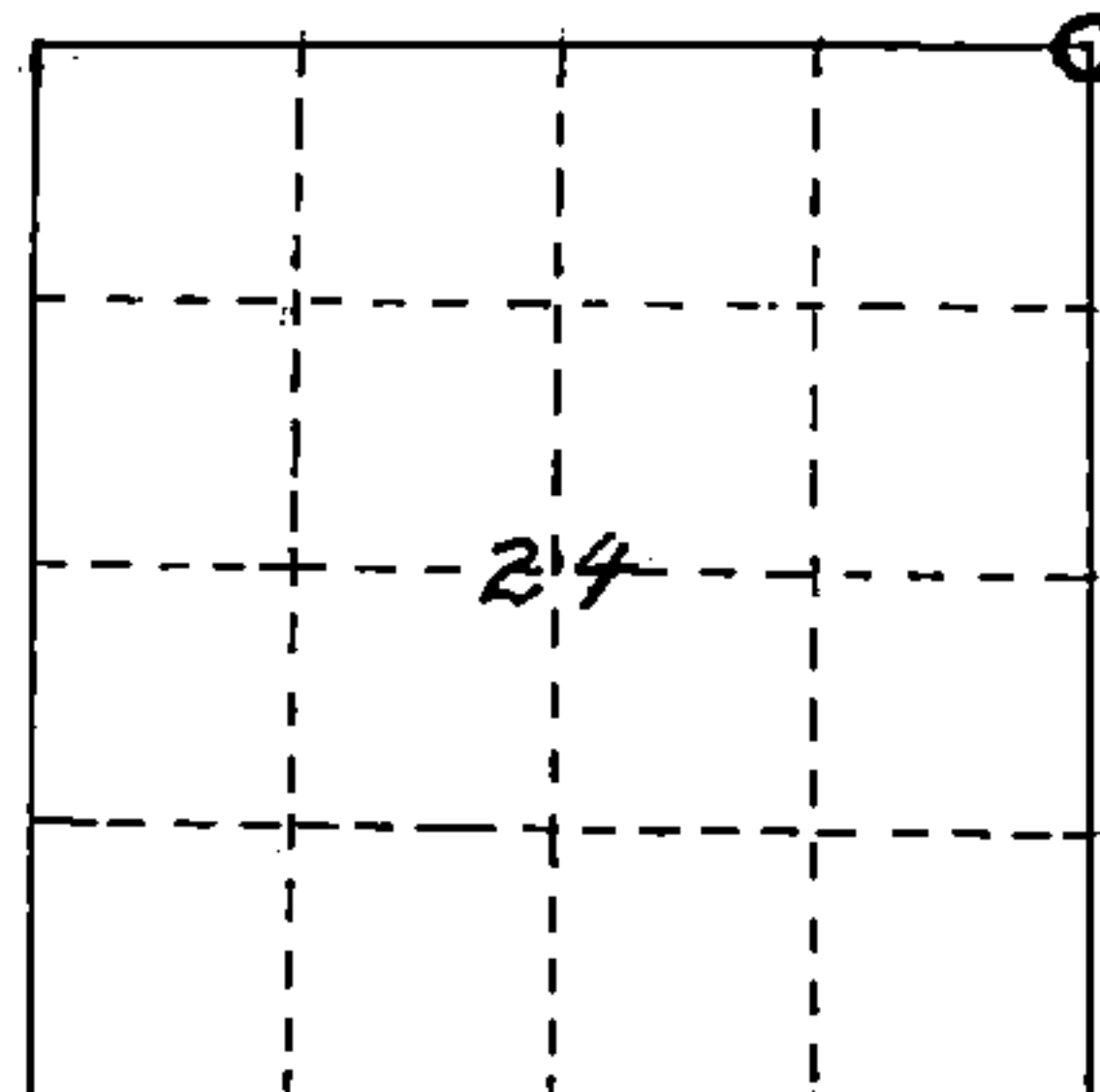
"GALVANIZED IRON PIPE, THREE FEET LONG, ONE INCH IN DIAMETER, WITH AN ALUMINUM CAP DENOTED AS, 'KIMBERLY-CLARK CORP T35N 18, 13, 24, 19, R13-14E SPERHAKE RLS 463 10-12-62'".

The pipe is witnessed by:

- W. Ash 4 N54°E 14 links. (Scribed S18 NBT).
- W. Ash 7 S55°E 51 links. (Scribed S19 NBT).
- Maple 5 N73°W 42 links. (Scribed S13 NBT).
- Aspen 8 S56°W 28 links. (Scribed S24 NBT).

Description as to how corner was located:

At the approximate location of the corner was located a post about 30 years old. Very probably authenticating its position is a possible original bearing tree described in the original field notes as "Hemlock 14 N76W 27". No iron marks are visible, but several blazes appear to be so old as to be original. In addition, the stumps of what could be two other original bearing trees fit into the descriptions exactly. They were described originally as, "Sugar 12 N50E 32, and Hemlock 20 S50E 26". The quarter section corner between 13 and 18, and the corner of 25, 36, 30, 31, have been previously established from existing original B.T's. The post presently at the approximate location of 13, 24, 18, 19, stands only 10 links west of a straight line between the 1/4 between 13 and 18, and 25, 36, 30, 31. The distance between the previously established corners is 202.67 chains. By proportion, then, the corner of 13, 24, 18, 19, should be 40.53 chains south of the 1/4 between 13 and 18, while at present the post is exactly 40.00 chains south. However, at the site of the 1/4 cr. between 25 and 30 is a lake known as "Ed's Lake". At this point there is such a discrepancy between the original field notes and actual measurements that it is impossible to compare actual with record distances. Thus, I feel that the approximate 53 links per half mile of line that



○ = Corner monument restored.

N25

435 13 130000

RESTORATION OF LOST ORIGINAL GOVERNMENT SURVEY CORNER

102 N25  
-A  
N25

Northeast section corner of section 24, T35N-R13E, 4th p.m. - continued.

proportionate measurement would pro-rate between the existing corners is entirely absorbed in the original erroneous recording of the width of the lake. Thus, the present position of the post at 13, 24, 18, 19, being just 40.00 chains south of the  $\frac{1}{4}$  between 13 and 18, is, I feel, a true reflection of its correct position. Therefore, I have accepted the post as marking the site of 13, 24, 18, 19.

Dated at Crandon, Wis. WIS., this 11th day of Feb., 19 63

Signature *Neil Sporko* Title Registered Land Surveyor Registration No. S-463

Office of Register of Deeds, County of Forest, I hereby certify that the within instrument was filed in this office for record on the 11th day of Feb., 19 63 at 10 o'clock A M. 86831

*Anna Peterson*  
(Register of Deeds)

Subscribed & sworn to before me this 11 day of Feb. 1963.

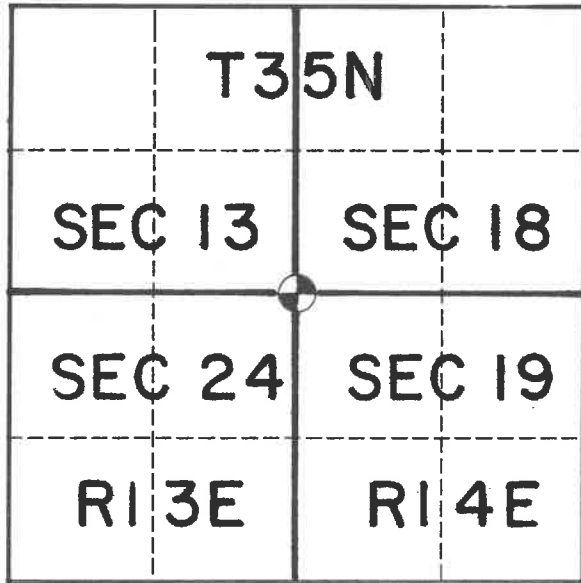
*Anna Peterson*  
Notary Public, Forest Co., Wis

By \_\_\_\_\_ Deputy 10/31/65 Com. exp.

# U. S. PUBLIC LAND SURVEY MONUMENT RECORD

INDEX NO. N-1

section Corner to Section 2413, 18, 19, T 35N, R 14 E  
 (Section/Quarter)



Show distances and bearings if set by proportional measurement.

○ = Corner monument restored.



Ties are to aluminum nails driven into the tree centers which trees were blazed and scribed. Bearings are magnetic.

- 1-2 N65°W 27.85
- 1-3 N07°W 9.52
- 1-4 N55°E 17.02
- 1-5 S38°W 12.14

History of original corner establishment, record evidence, monument evidence, occupational evidence, testimonial evidence or any other material evidence, and what you found and how the monument was set.

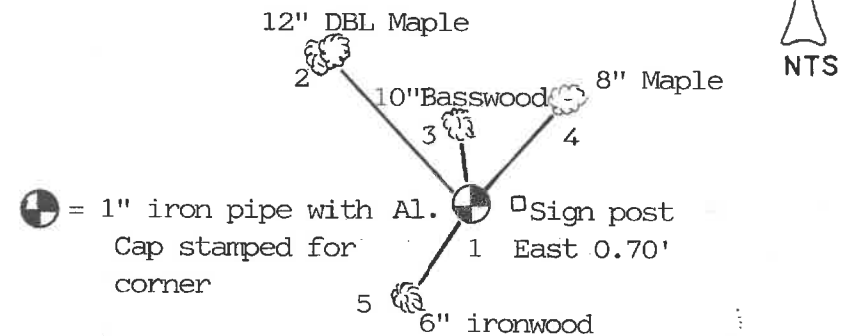
In 1857 Alfred Millard, contract surveyor, set this corner at 80 chains and marked the following bearing trees:

Hemlock	14"	N70W	27 links
Sugar	12"	N50E	32 "
Hemlock	20"	S50E	20 "
Sugar	16"	S10W	25 "

In 1962 Neal Sperhake, RLS found evidence of an old post and blazed stumps at this corner location. He accepted the evidence and reset the corner with a 1" iron pipe and aluminum cap marked for the corner.

I followed a well blazed line north and west leading to this corner position where I found Sperhake's monument in good condition. I therefore set the existing monument to USFS standards marking new BTs.

In the plan view drawing below, provide reference ties to at least 4 witness monuments, or, if the location is within a municipality, to at least 2 witness monuments. (Witness monuments shall be made of concrete, natural stone, iron or other equally durable material, except wood other than bearing trees.) Also, show any material discrepancies between the corner restored or re-established and the location of any other previous corner location or occupation.



Kim H Pritzlaff, RLS No. 1259  
 (Type or print name) certify that the corner location shown on this record was determined by me or under my direction and control and that this U.S. Public Land Survey Monument Record is correct and complete to the best of my knowledge and belief.

*Kim H Pritzlaff*  
 Signature

1993  
 Date

Certificate Ready For Filing:

*Ralph Wells*  
 Acting District Ranger

149082

4351313000



INDEX NO. \_\_\_\_\_

MAINTENANCE RECORD

Condition of Monument \_\_\_\_\_

Condition of Ties \_\_\_\_\_

New Ties, if any:

\_\_\_\_\_  
Date

\_\_\_\_\_  
Signature

Condition of Monument \_\_\_\_\_

Condition of Ties \_\_\_\_\_

New Ties, if any:

\_\_\_\_\_  
Date

\_\_\_\_\_  
Signature

Condition of Monument \_\_\_\_\_

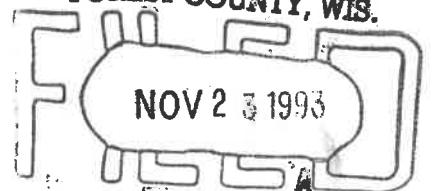
Condition of Ties \_\_\_\_\_

New Ties, if any:

\_\_\_\_\_  
Date

\_\_\_\_\_  
Signature

REGISTER'S OFFICE  
FOREST COUNTY, WIS.



*Paul A. Schenck*  
At 9 O'clock A.M.  
Register of Deeds