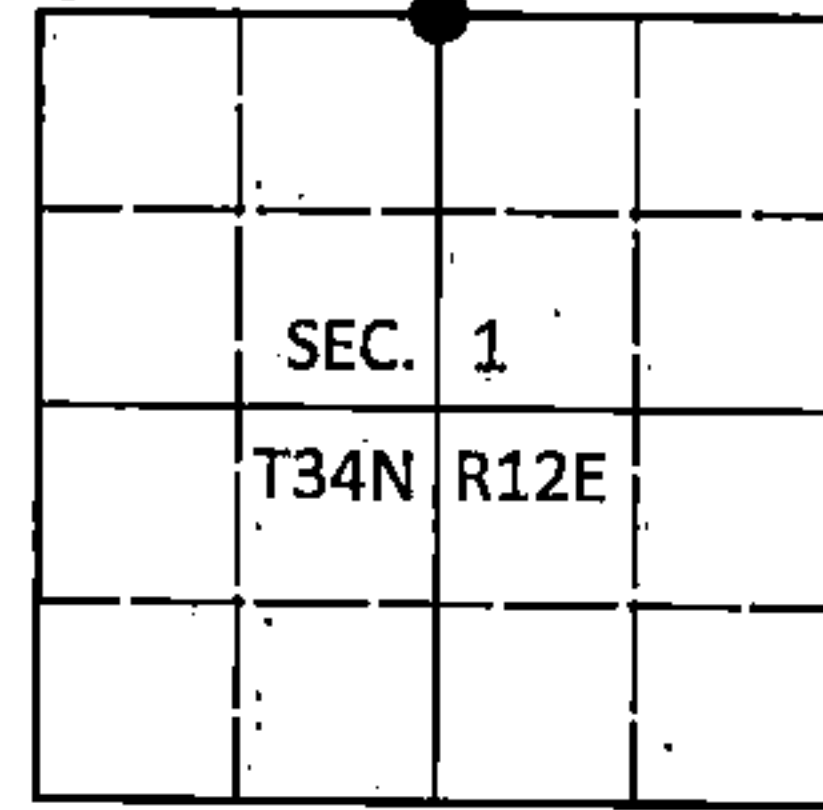


U.S. PUBLIC LAND SURVEY MONUMENT RECORD

Note: This form is intended and designed to fulfill all requirements of Wisconsin Administrative Code, Chapter A-E 7.08 U.S. Public Land Survey Monument Record (3)(a-i).

(a) CORNER LOCATION
 1/4 Cor. of Secs. 1 & 36
 Township 34 & 35 North
 Range 12 East of the 4th P.M.
 Town of Ainsworth/Nashville
 County of Langlade/Forest

WISCRS - Langlade County
 N: 458,751.48 USft
 E: 676,698.38 USft
 WISCRS - Forest County
 N: 532,285.77 USft
 E: 828,058.32 USft
 Datum: NAD 83(2011)
 GNSS Method: WISCORS RTN



(b) HISTORY OF ORIGINAL CORNER ESTABLISHMENT

Original Surveyor: Alfred Millard

Original Accessories:

Date of Survey Commenced: August, 1857
 Completed: August, 1857

Cedar 12" N39°E, 10 lks.
 Tamarack 12" S52°W, 5 lks.

(b)(f)(g)(h) Description of monument found at this corner and if it was accepted, state all evidence (material; testimonial, occupational, plats, records, other monuments) used as a basis for accepting. If not accepted or if nothing was found, state evidence used as basis for establishing location. If re-established through lost corner proportionate methods, indicate all monuments, distances and directions used to establish. Indicate type of monument and sign post found or set.

This is a perpetuation of a previous USPLS Monument Record by Stuart L. Foltz, RLS dated June 30, 1977 and filed in the office of the Forest County Register of Deeds. A complete history of the corner can be found on the previous monument record. I accept the previous location as a true and faithful perpetuation or reestablishment of the original corner location and further perpetuate it as follows.

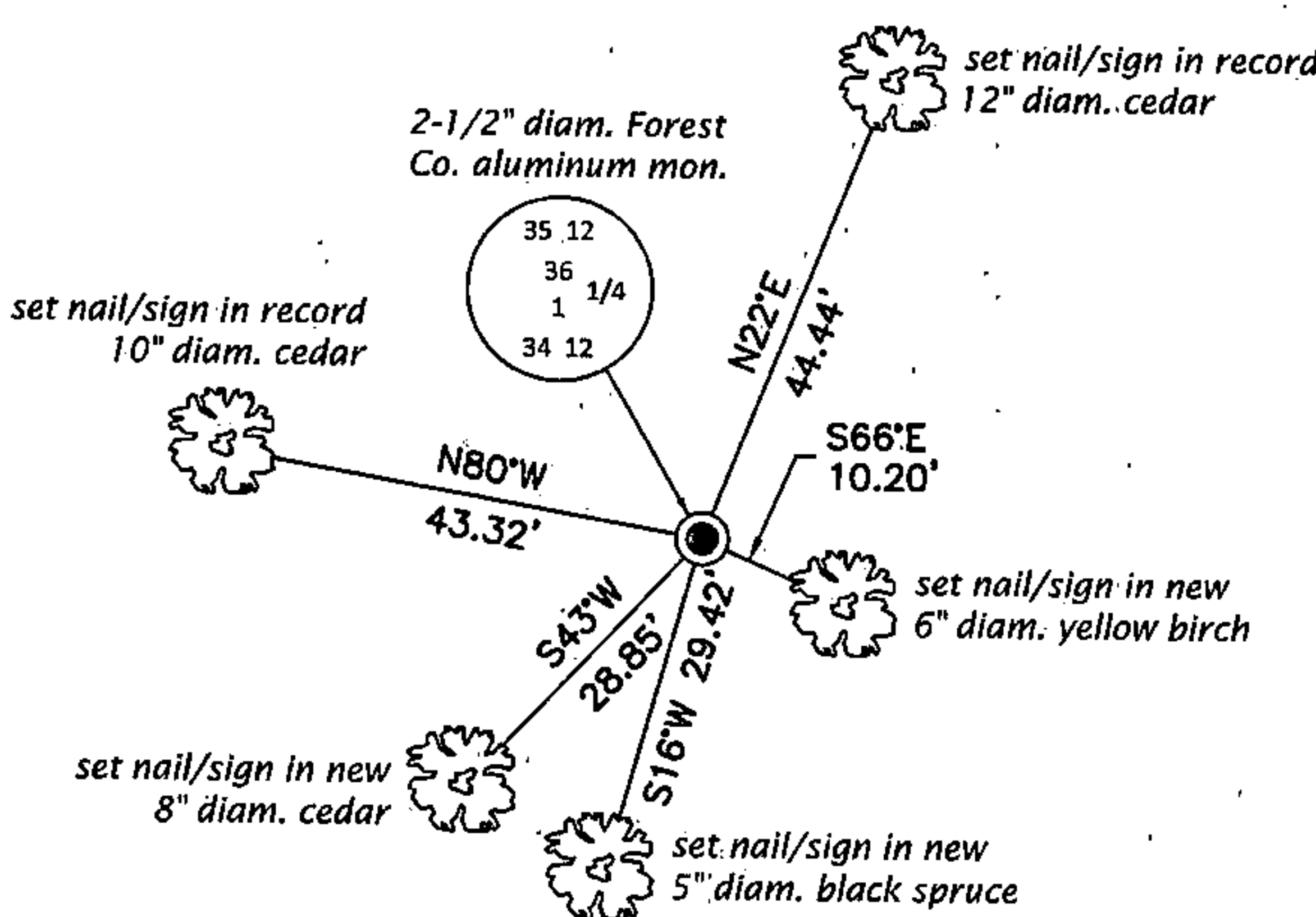
To augment the record:

April 27, 1978: Survey of Sec. 36 for Exxon by Stuart L. Foltz, RLS indicates corner is marked by a Forest County aluminum monument with the following BT's: 8" cedar N85°W, 43.2', 7" cedar N22°E, 44.4', 6" cedar S86°W, 11.9'.

February 10, 2004: Survey in Sec. 36 by Michael A. Trembl, RLS indicates corner is marked by a Forest County aluminum monument.

October 21, 2016: I found and accepted the record monument, a 2-1/2" diam. aluminum pipe with a 3-1/4" diam. Forest Co. aluminum cap just beneath the bog/water surface. I set a DEEP-1 magnet adjacent to the monument. The stump of the GLO cedar bearing tree was found at record-bearing and distance. The record bearing tree at S86°W is gone. I found or established accessories as shown below. I set a white vinyl sign post bearing North, 0.5 ft.

(c)(d)(e) Plan view of corner with ties to at least 4 witness monuments. If in disagreement with previously established corner, show the distances between the two corners and also indicate the ties to the disputed.



FOREST COUNTY, WI
 CORTNEY BRITTEN CLEEREMAN
 REGISTER OF DEEDS
 RECEIVED FOR RECORD

APR 27 2018

Time: 10:00 A.M.
 Vol.: Corner Restoration
 Page Number: 2-23

Magnetic
 1" = 30'



(i) I, Jeffrey W. Austin, Professional Land Surveyor No. S-1885, hereby certify that the corner location on this record was determined by me or under my direction and control and that this U.S. Public Land Survey Monument Record is correct and complete to the best of my knowledge and belief.

[Handwritten Signature]
 Signature

MAY 4, 2017
 Date

CERTIFIED LAND CORNER RESTORATION

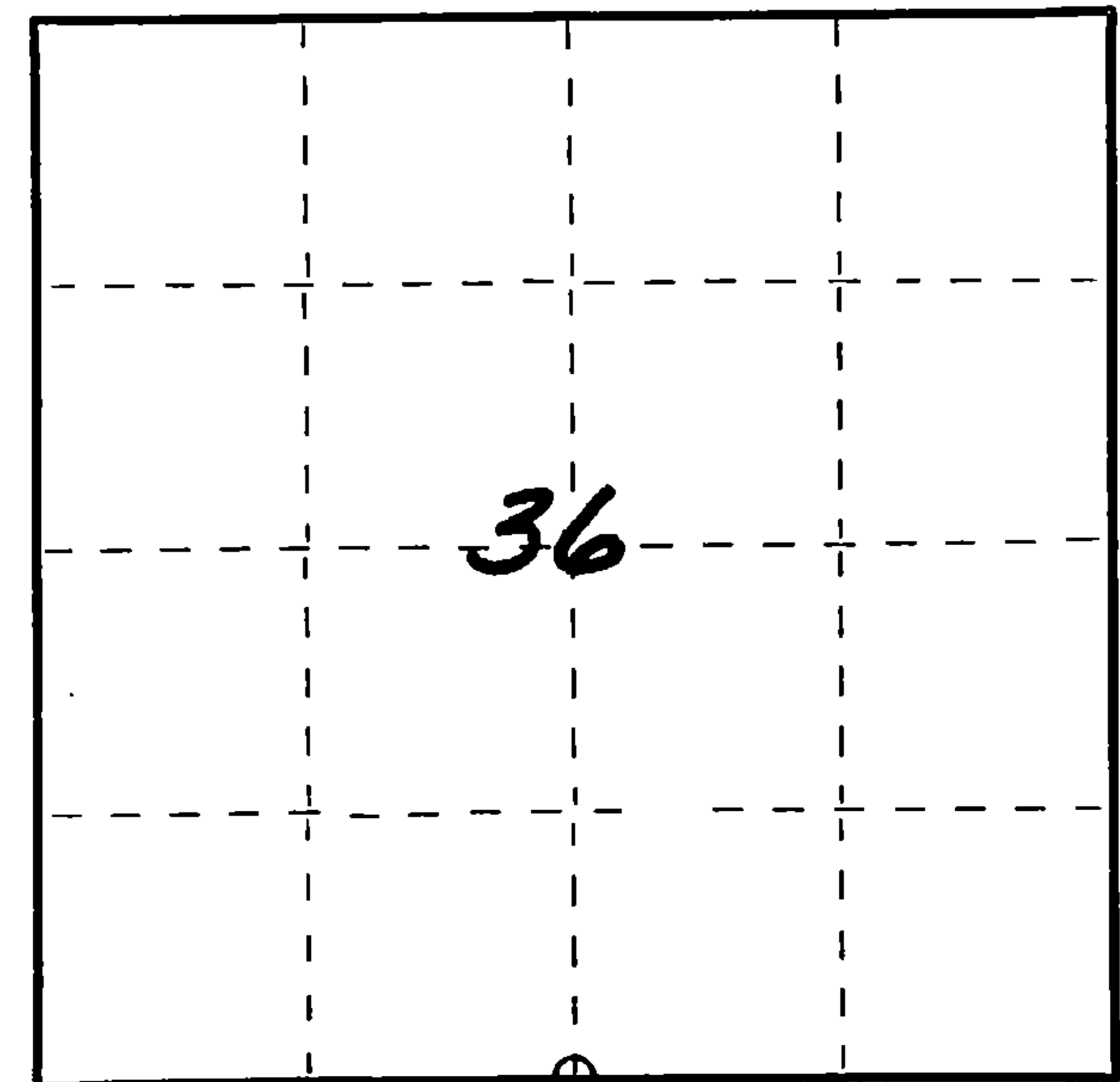
Index No. **223**

State of Wisconsin }
County of Forest } ss.

I, Stuart L. Foltz, do hereby certify that on the 1st day of February, 1977, I found evidence of the South one-quarter corner of Section 36 Township 35, North, Range 12 East, Fourth Principal Meridian, as described hereon; and that from this evidence I established a new monument and accessories as described hereon to perpetuate the original location of this corner.

Resident witnesses:

.....
.....
.....



○ = Corner monument restored.

History of original corner establishment:

Date of original survey: September, 1857
Original monument: Wood post
Original bearing trees: 12" Cedar N39°E 10 lks. (6.6')
12" Tamarac S52°W 5 lks. (3.3')

Description of corner evidence found:

iron pipe
Found 1-3/4" ~~land~~ wood post, with stump of original Cedar bearing tree marked "OBT" bearing N45°E, 6.7'.

Bearing trees found:

8" Cedar N85°W 43.2'
7" Cedar N22°E 44.4'

Description of monument and accessories I established to perpetuate the original location of this corner:

Set Forest County aluminum monument
(2" aluminum pipe with cast aluminum cap)

New bearing tree:

P.K. Nail with disc in 6" Cedar S86°W 11.9'

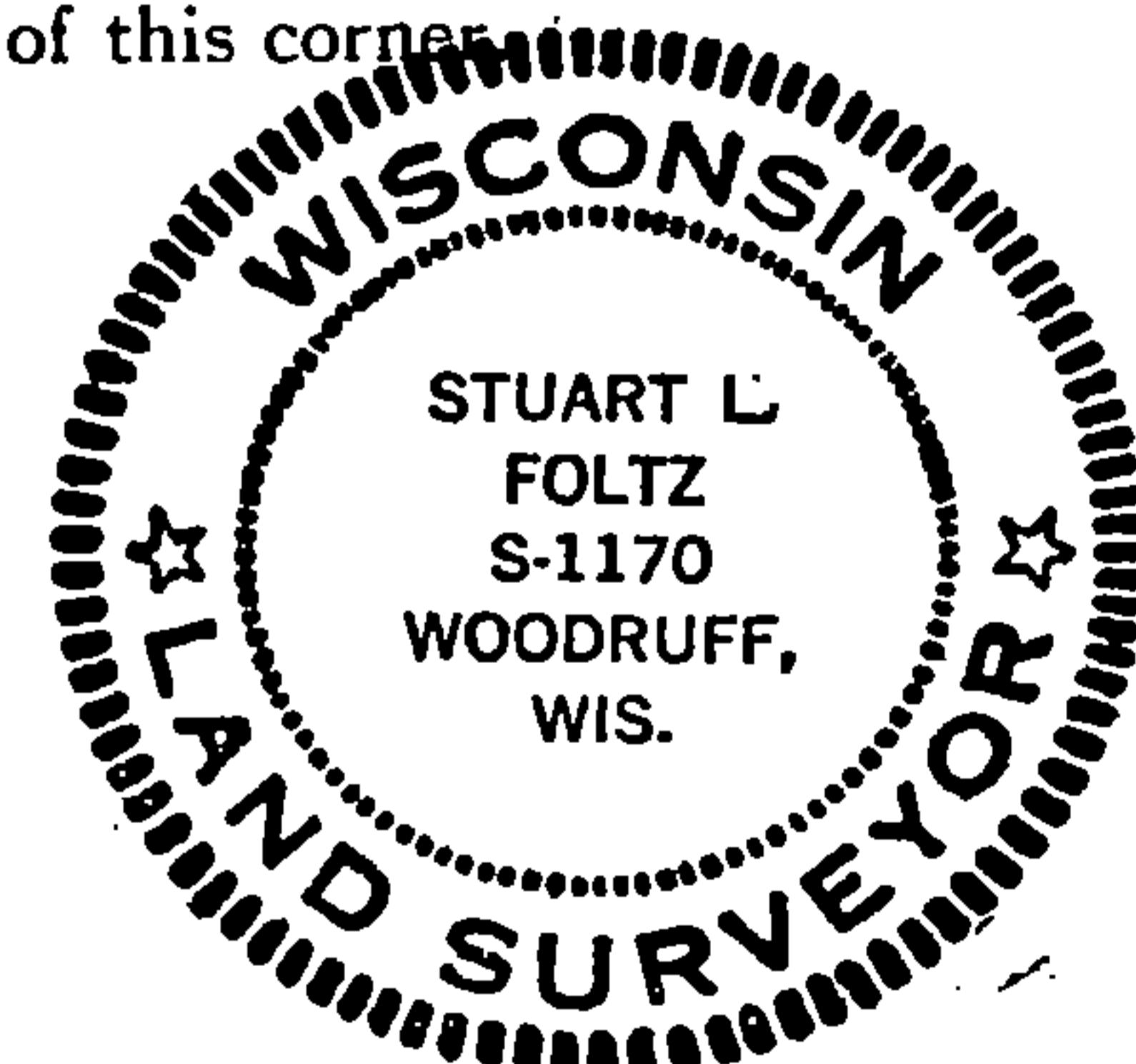
Dated at Minocqua, Wis., this 30th day of June, 1977.

Signature Stuart L. Foltz Title Registered Land Surveyor Registration No. S-1170
(County Surveyor, Registered Land Surveyor, or other duly authorized official)

Office of Register of Deeds, County of Forest, I hereby certify that the within instrument was filed in this office for record on the 6th day of July, 1977 at 9:30 o'clock A. M.

Eugene Stutzman
(Register of Deeds)
By..... Deputy

DOCUMENT NUMBER
111807



FORM 985 H. C. MILLER CO., MILWAUKEE

4351236 0020