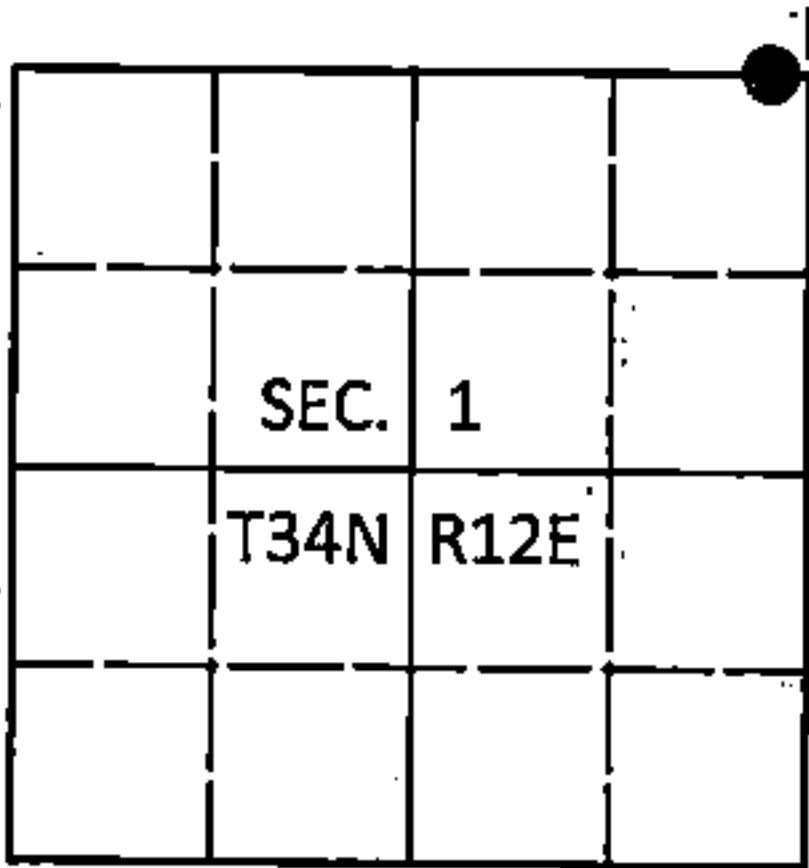


U.S. PUBLIC LAND SURVEY MONUMENT RECORD

Note: This form is intended and designed to fulfill all requirements of Wisconsin Administrative Code, Chapter A-E 7.08 U.S. Public Land Survey Monument Record (3)(a-l).

(a) CORNER LOCATION
Meander Cor. of Secs. 1 & 36
Township 34 & 35 North
Range 12 East of the 4th P.M.
Town of Ainsworth/Nashville
County of Langlade/Forest

WISCRS - Langlade County
N: 458,701.85 USft
E: 678,994.42 USft
WISCRS - Forest County
N: 532,224.73 USft
E: 830,354.07 USft
Datum: NAD 83(2011)
GNSS Method: WISCORS RTN (Offsets)



(b) HISTORY OF ORIGINAL CORNER ESTABLISHMENT

Original Surveyor: Alfred Millard
Original Accessories:
W. Pine 18" S66°W, 40 lks.
Maple 12" N68°W, 57 lks.

Date of Survey Commenced: August, 1857
Completed: August, 1857

(b)(f)(g)(h) Description of monument found at this corner and if it was accepted, state all evidence (material; testimonial, occupational, plats, records, other monuments) used as a basis for accepting. If not accepted or if nothing was found, state evidence used as basis for establishing location. If re-established through lost-corner proportionate methods, indicate all monuments, distances and directions used to establish. Indicate type of monument and sign post found or set.

This is a perpetuation of a previous USPLS Monument Record by Stuart L. Foltz, RLS dated June 30, 1977 and filed in the office of the Forest County Register of Deeds. A complete history of the corner can be found on the previous monument record. I accept the previous location as a true and faithful perpetuation or reestablishment of the original corner location and further perpetuate it as follows.

November 9, 1990: USPLS Monument Record by William F. Kelly, RLS filed in the office of the Langlade County Surveyor.

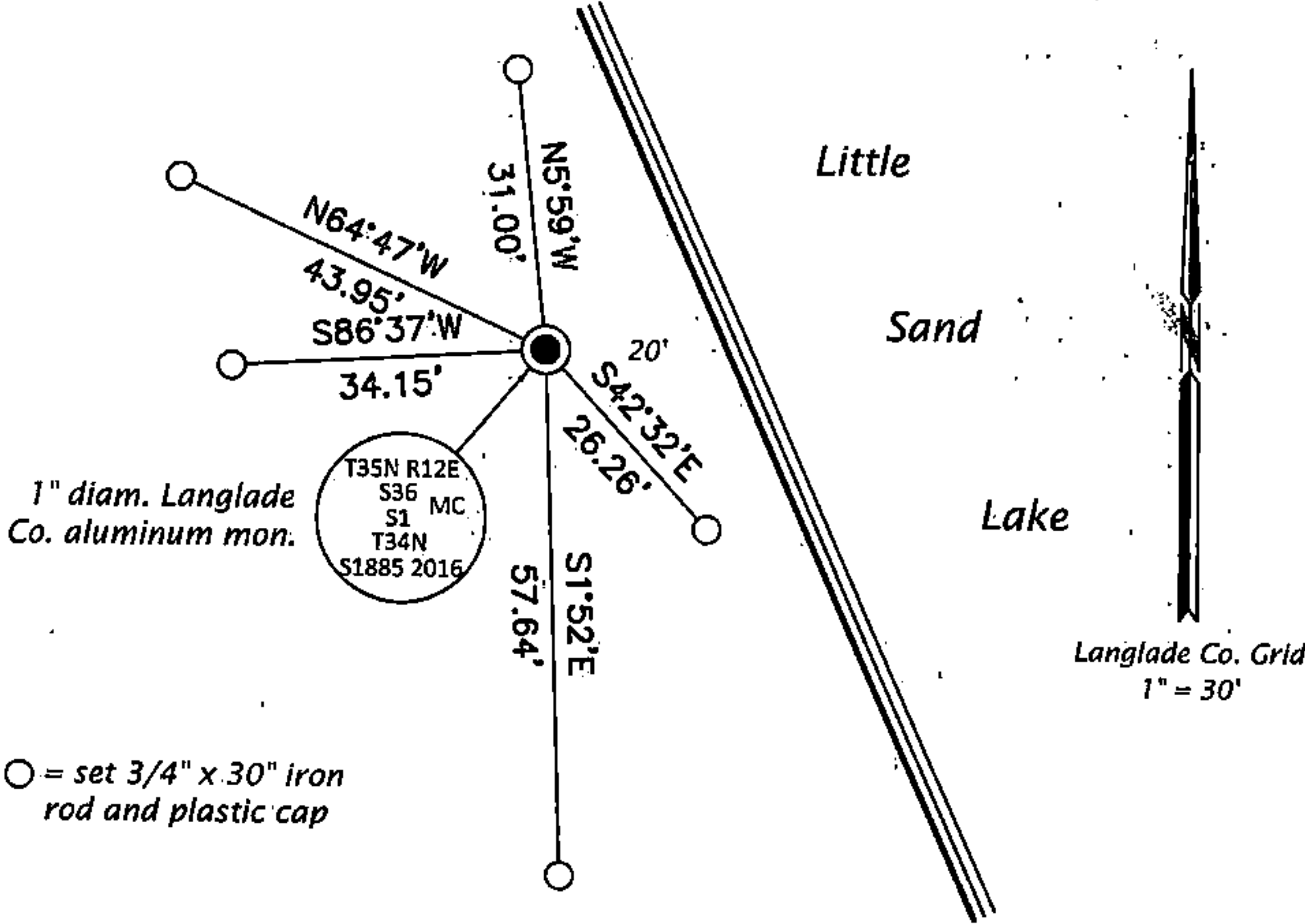
To augment the record:

April 27, 1978: Survey of Sec. 36 for Exxon by Stuart L. Foltz, RLS indicates corner is marked by a Forest County aluminum monument with the following BT's: 12" maple N6°W, 20.3', 7" maple S44°E, 12.07', 6" maple N65°E, 19.14'.

February 10, 2004: Survey in Sec. 36 by Michael A. Trembl, RLS indicates corner is not monumented but witnessed by a 2" brass-capped iron pipe bearing N50°35'22"W, 0.60'.

October 22, 2016: I concur with Trembl's rejection of the existing 2-1/2" diam. brass-capped iron pipe set by Kelly. I believe Kelly had no knowledge of Foltz's work and set the monument in error. Guided by Trembl's location, I searched the rock cairn and found what I believe to be the void left by Foltz's aluminum monument. This location matches the measurements to Foltz's bearing trees and his survey in Sec. 36. From this location, Kelly's brass-capped iron pipe bears N68°28'W, 0.77'. To avoid future confusion, I removed Kelly's iron pipe. At the true corner point, I set a 1" diam., 42" long aluminum pipe with a 3-1/4" diam. Langlade Co. aluminum cap flush in the existing ring of stone. I set a DEEP-1 magnet adjacent to the monument. I established accessories as shown below. I set a white vinyl sign post bearing Northwest, 1.2 ft.

(c)(d)(e) Plan view of corner with ties to at least 4 witness monuments. If in disagreement with previously established corner, show the distances between the two corners and also indicate the ties to the disputed.



FOREST COUNTY, WI
CORTNEY BRITTEN CLÉEREMAN
REGISTER OF DEEDS
RECEIVED FOR RECORD

APR 27 2018

Time: 10:00 A.M.
Vol.: Corner Restoration
Page Number: 2-25

(i) I, Jeffrey W. Austin, Professional Land Surveyor No. S-1885, hereby certify that the corner location on this record was determined by me or under my direction and control and that this U.S. Public Land Survey Monument Record is correct and complete to the best of my knowledge and belief.



[Signature]
Signature

May 4, 2017
Date