

Document Number
195025

REGISTER'S OFFICE
Forest County, WI
Received for record this 6th day
of August AD, 2007
at 2:35 o'clock P. M. and
recorded in Vol. Corner Restoration of records
on page X-17.
Kay Swanson
Deputy REGISTER

U.S. PUBLIC LAND SURVEY MONUMENT RECORD

(As Required by WI Adm. Code)

History of original corner establishment and subsequent restorations and descriptions of any record, monument, occupational, testimonial or other evidence considered:

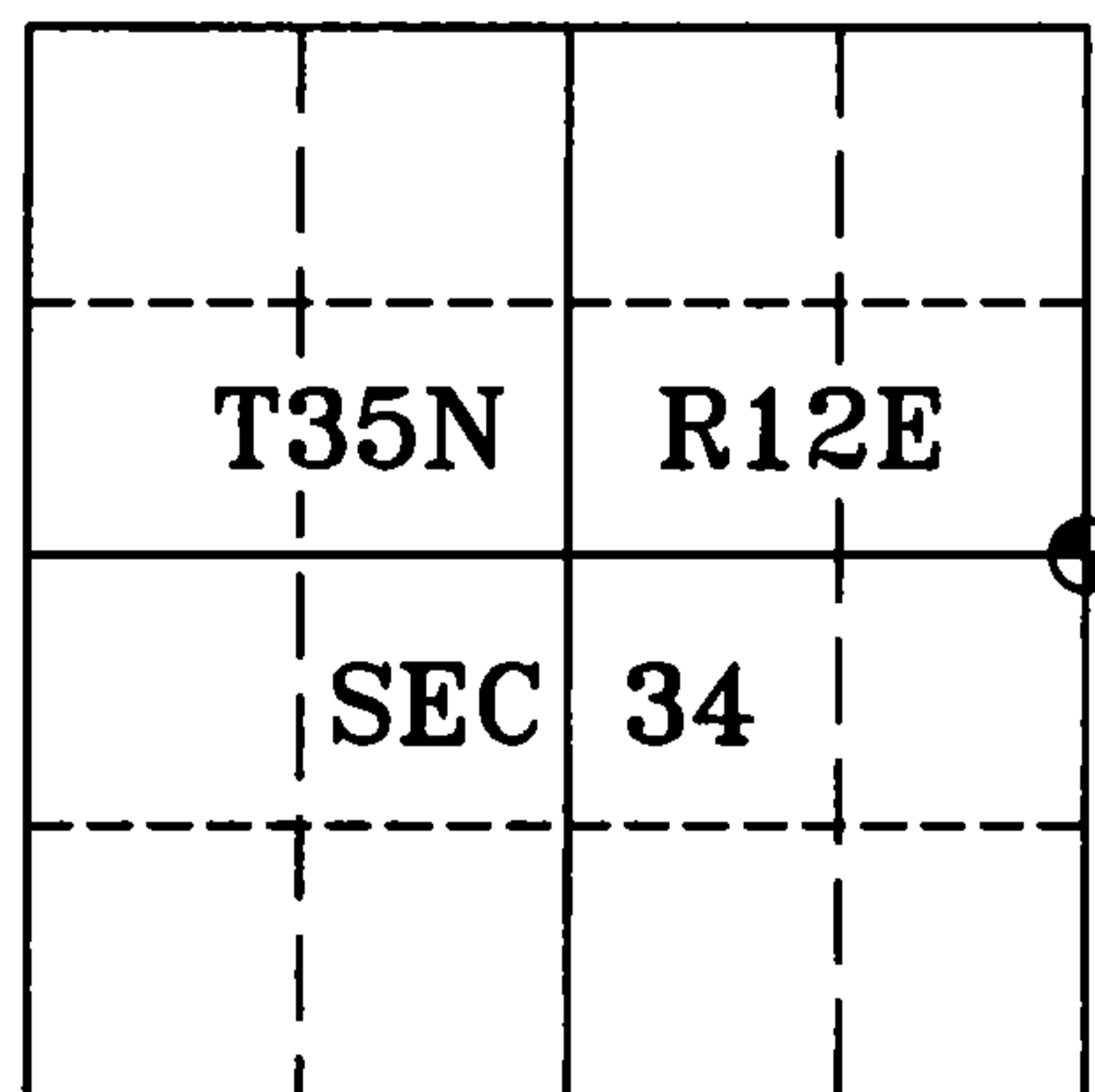
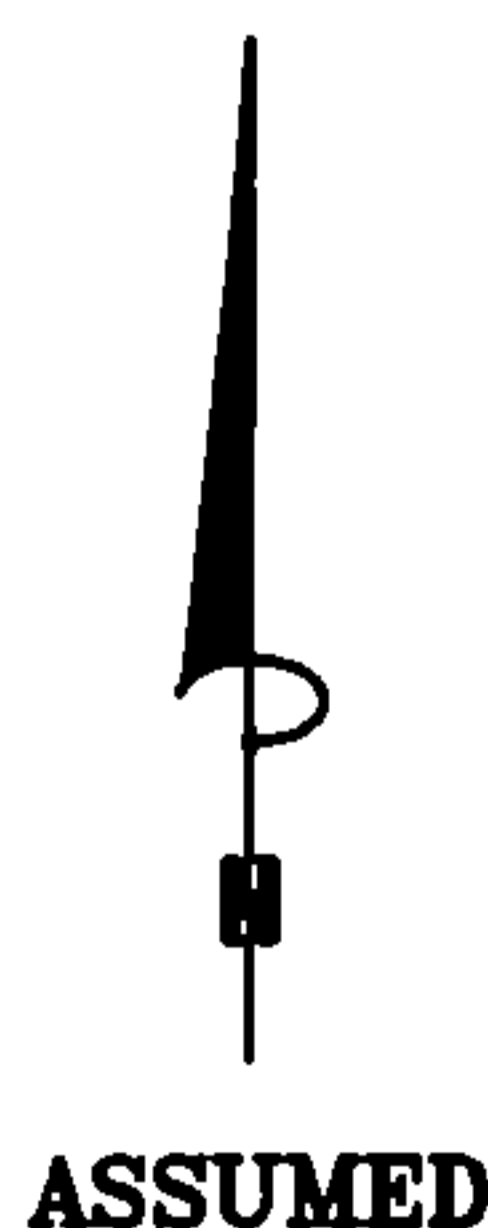
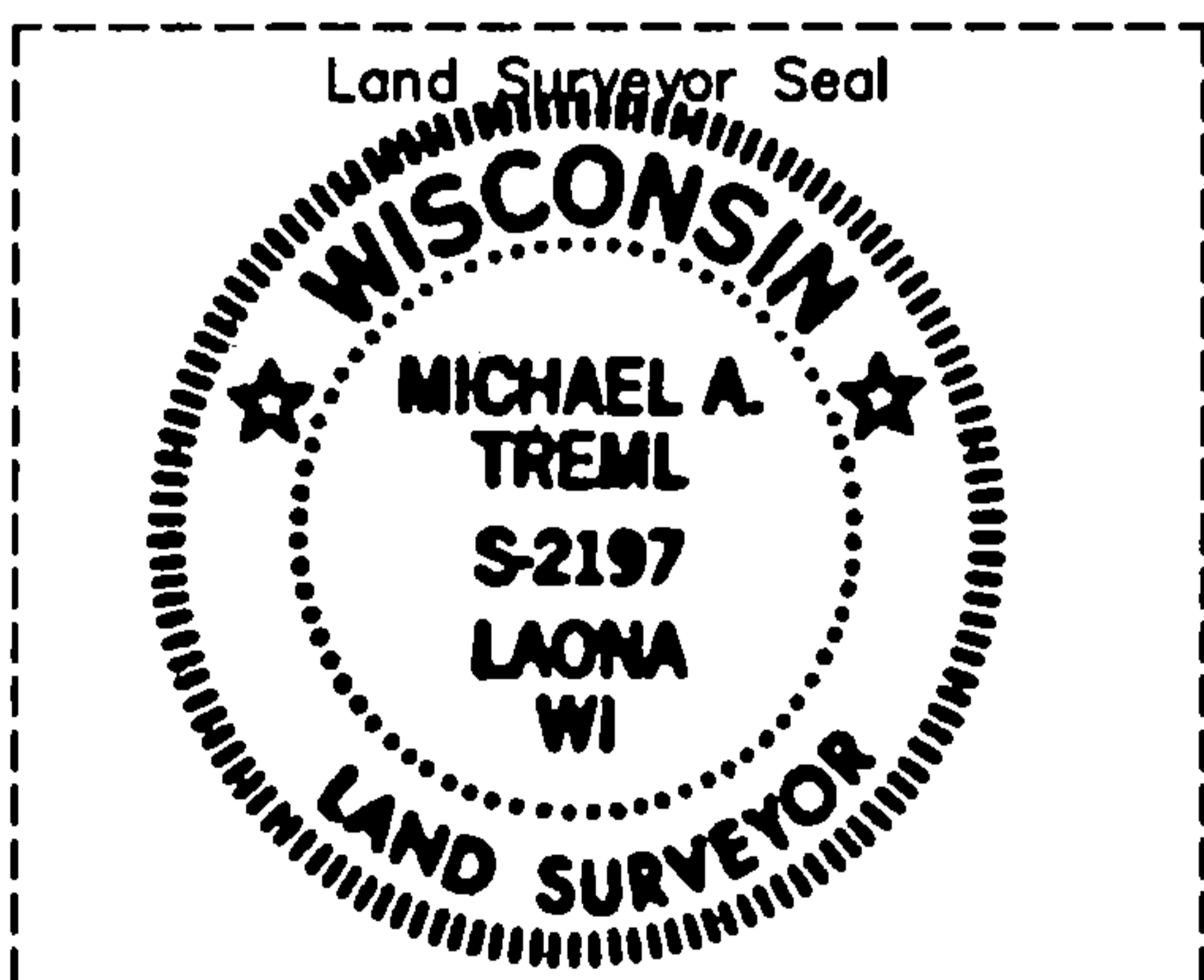
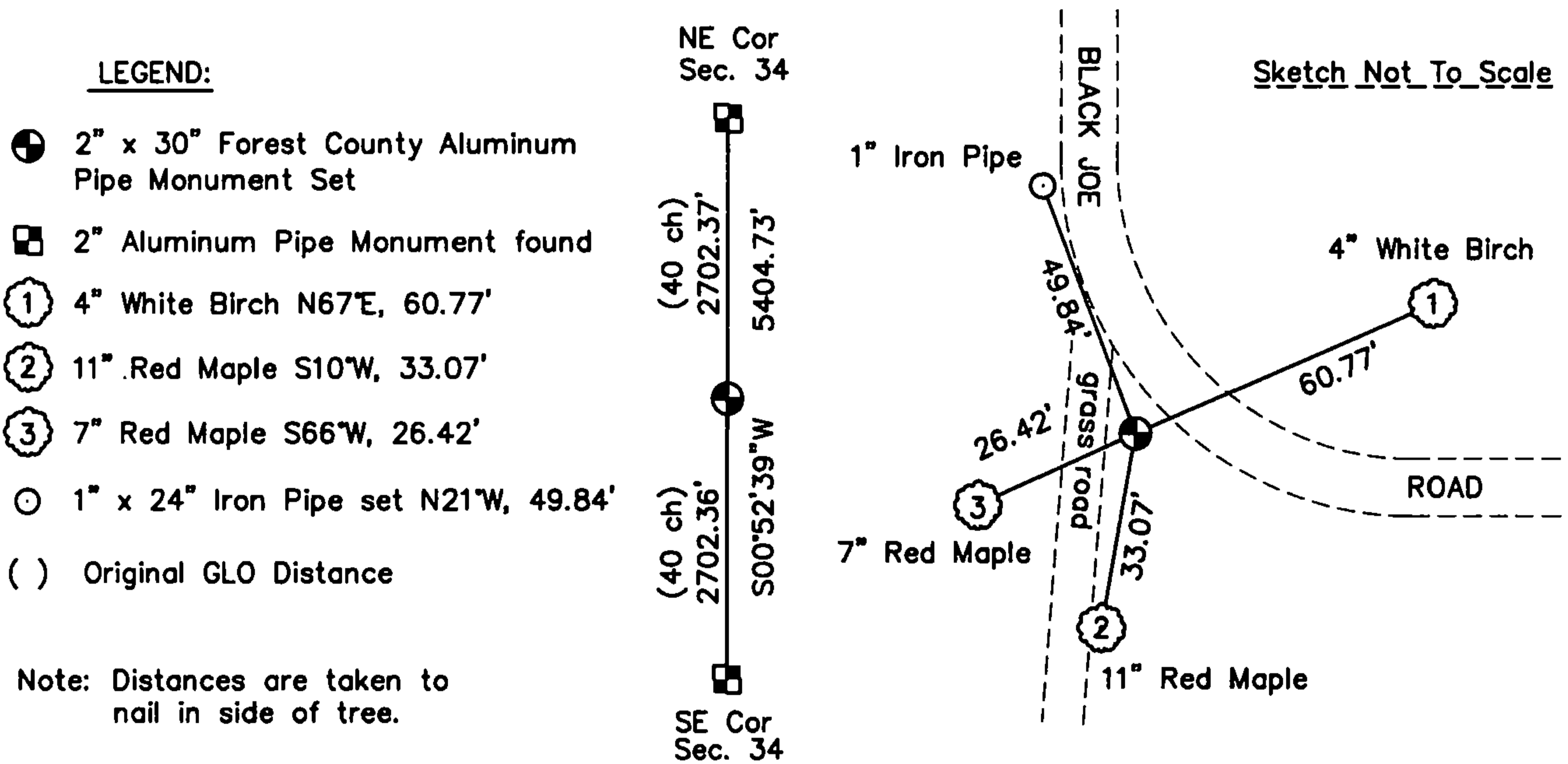
1865 - Nowlin, J.L., set quarter corner section post and made the following B.T.'s:
Y. Pine, 12", S 3° E, 160 lks., 105.60 feet.
Fir, 8", N 4° W, 25 lks., 16.50 feet.

2007 - I found no evidence of the original 1/4 corner or accessories.
I set a 2" x 30" Forest County Aluminum Pipe Monument midpoint and on line between the Southeast Corner and the Northeast Corner of Section 34.

Corner was: (Check All That Apply)

- Restored through acceptance of an obliterated evidence location.
- Restored through acceptance of a found perpetuated location.
- Considered a lost corner and reestablished through lost corner proportionate methods (include a plan view drawing showing distances and directions to other Public Land Survey Corners used for proportioning and determining the corner location).
- Restored or reestablished in a location that differs from a previous restoration or reestablishment (include a plan view drawing and indicate what was set and/or found).

Describe the monument and accessories used to perpetuate the location of this corner (include a plan view drawing and indicate what was set and/or found).



I, Michael A. Tremel, RLS
(type or print name) certify that the corner location shown on this record was determined by me or under my direction and control and that this U.S. Public Land Survey Monument Record is correct and complete to the best of my knowledge and belief.

Michael A. Tremel 8/3/07
Signature Date

The East Quarter corner of
Section 34 T. 35 N., R. 12 E.
Forest County, WI

Index No. X-17
2007

X-17