

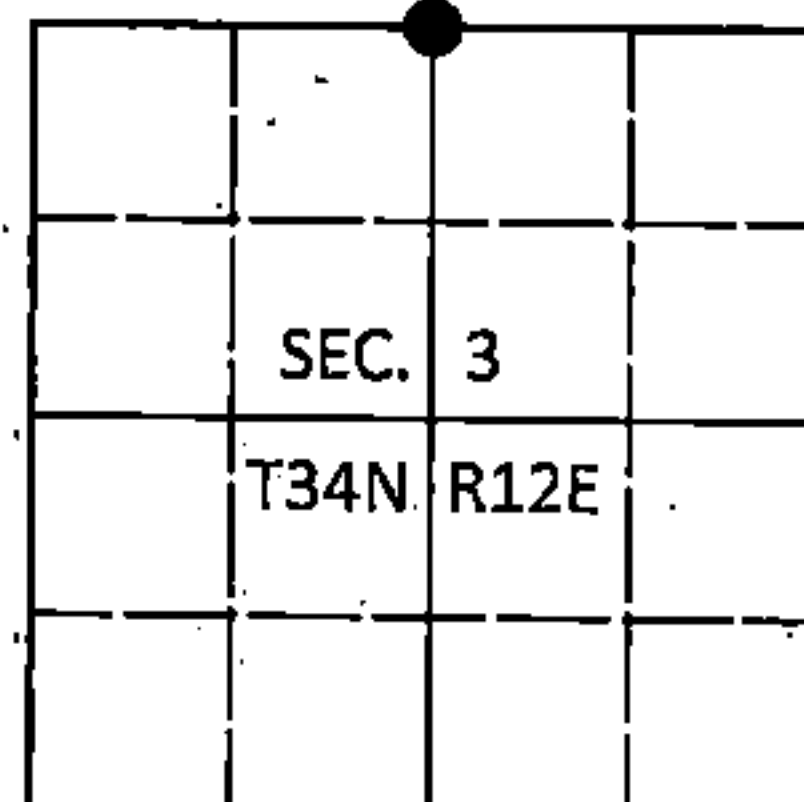
225156

U.S. PUBLIC LAND SURVEY MONUMENT RECORD

Note: This form is intended and designed to fulfill all requirements of Wisconsin Administrative Code, Chapter A-E 7.08 U.S. Public Land Survey Monument Record (3)(a-l).

(a) CORNER LOCATION
1/4 Cor. of Secs. 3 & 34
Township 34 & 35 North
Range 12 East of the 4th P.M.
Town of Ainsworth/Nashville
County of Langlade/Forest

WISCRS - Langlade County
N: 458,656.92 USft
E: 666,173.82 USft
WISCRS - Forest County
N: 532,243.53 USft
E: 817,533.45 USft
Datum: NAD 83(2011)
GNSS Method: WISCORS RTN



(b) HISTORY OF ORIGINAL CORNER ESTABLISHMENT

Original Surveyor: Alfred Millard

Original Accessories:

Date of Survey Commenced: August, 1857
Completed: August, 1857

Y. Pine 18" N54°E, 85 lks.
B. Oak 10" S27°E, 48 lks.

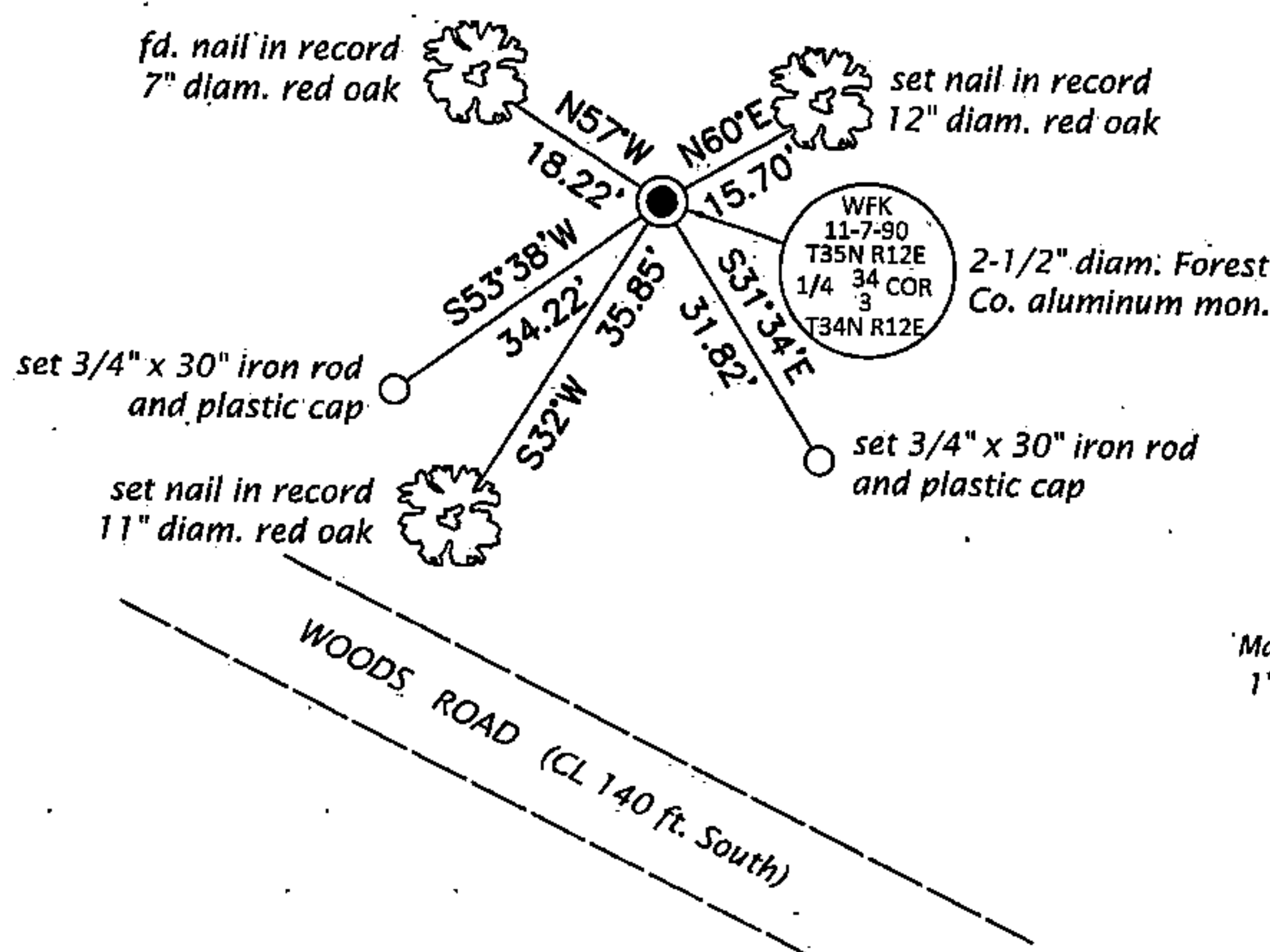
(b)(f)(g)(h) Description of monument found at this corner and if it was accepted, state all evidence (material, testimonial, occupational, plats, records, other monuments) used as a basis for accepting. If not accepted or if nothing was found, state evidence used as basis for establishing location. If re-established through lost corner proportionate methods, indicate all monuments, distances and directions used to establish. Indicate type of monument and sign post found or set.

This is a perpetuation of a previous USPLS Monument Record by Thomas R. Arnott, RLS dated November 11, 1975 and filed in the office of the Forest County Register of Deeds. A complete history of the corner can be found on the previous monument record. I accept the previous location as a true and faithful perpetuation or reestablishment of the original corner location and further perpetuate it as follows.

This is a perpetuation of a previous USPLS Monument Record by William F. Kelly, RLS dated November 9, 1990 and filed in the office of the Langlade County Surveyor. A complete history of the corner can be found on the previous monument record. I accept the previous location as a true and faithful perpetuation or reestablishment of the original corner location and further perpetuate it as follows.

October 22, 2016: I found and accepted the record monument, a 2-1/2" diam. aluminum pipe with a 3-1/4" diam. Forest Co. aluminum cap projecting 8" above a ring of stone. I set a DEEP-1 magnet adjacent to the monument. The record bearing tree at N24°E is dead and the tree at S22°W is gone. I found or established accessories as shown below. I found a white vinyl sign post bearing East, 0.8 ft.

(c)(d)(e) Plan view of corner with ties to at least 4 witness monuments. If in disagreement with previously established corner, show the distances between the two corners and also indicate the ties to the disputed.



FOREST COUNTY, WI
CORTNEY BRITTEN CLEEREMAN
REGISTER OF DEEDS
RECEIVED FOR RECORD

APR 27 2018

Time: 10:00 A.M.
Vol.: Corner Restoration
Page Number: 2-15

(i) I, Jeffrey W. Austin, Professional Land Surveyor No. S-1885, hereby certify that the corner location on this record was determined by me or under my direction and control and that this U.S. Public Land Survey Monument Record is correct and complete to the best of my knowledge and belief.

Signature

May 4, 2017
Date



3512340020 (INDEX NO. A-15)

43512340020

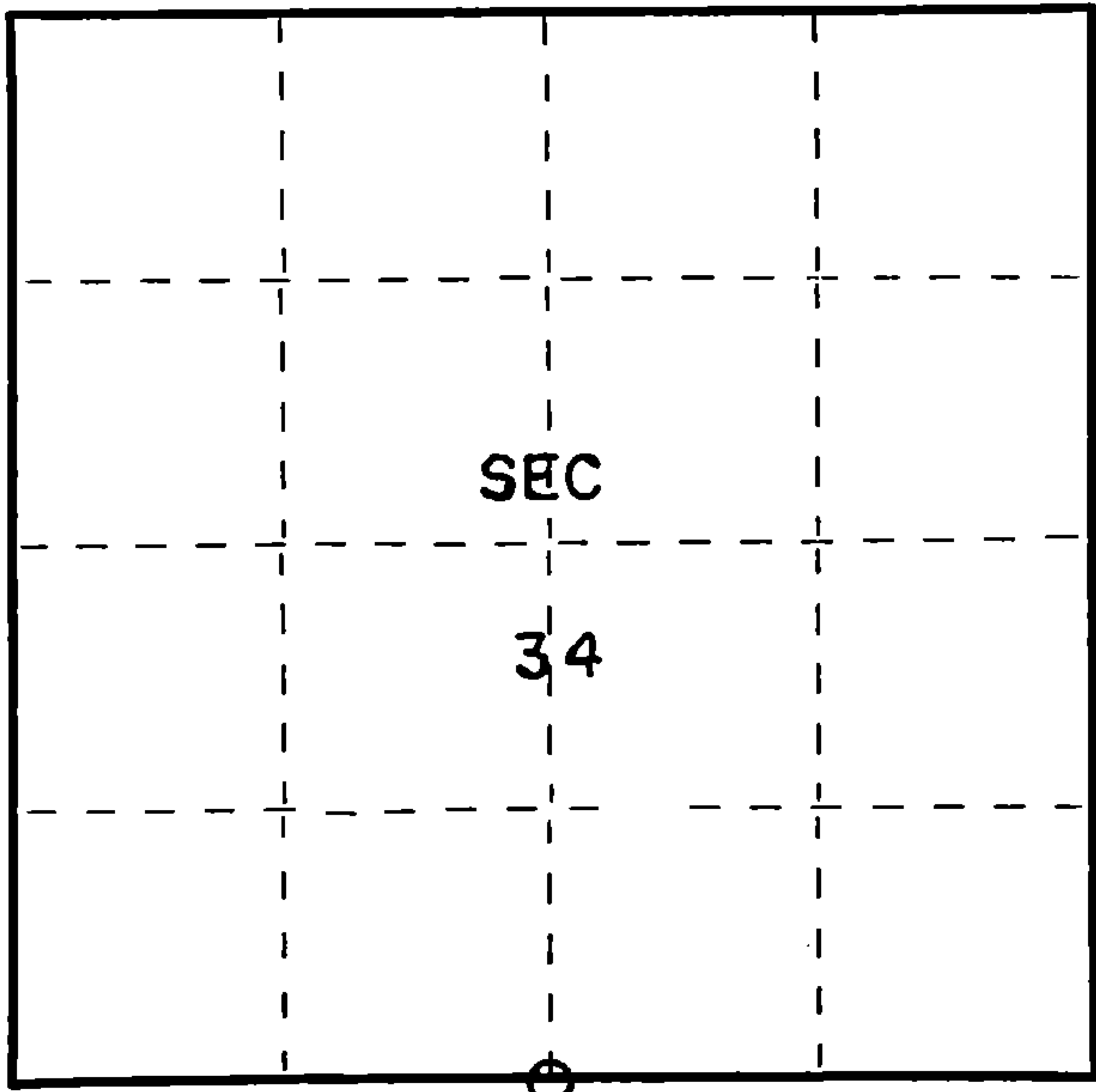
CERTIFIED LAND CORNER RESTORATION

Index No. **Z15**

State of Wisconsin }
County of Forest } ss.

I Thomas R. Arnott, do hereby
certify that on the 22nd day
of September, 19 75, I found
evidence of the 1/4
corner of sections 3 & 34
Township 34 & 35, North, Range
12 E, Fourth Principal Meridian,
as described hereon; and that from this evidence
I established a new monument and accessories
as described hereon to perpetuate the original
location of this corner.

Resident witnesses:
Herbert Wagoner



○ = Corner monument restored.

History of original corner establishment:

Y. Pine 18 N54E 85? Lks.
B. Oak 10 S27E 48 Lks.

Description of corner evidence found:

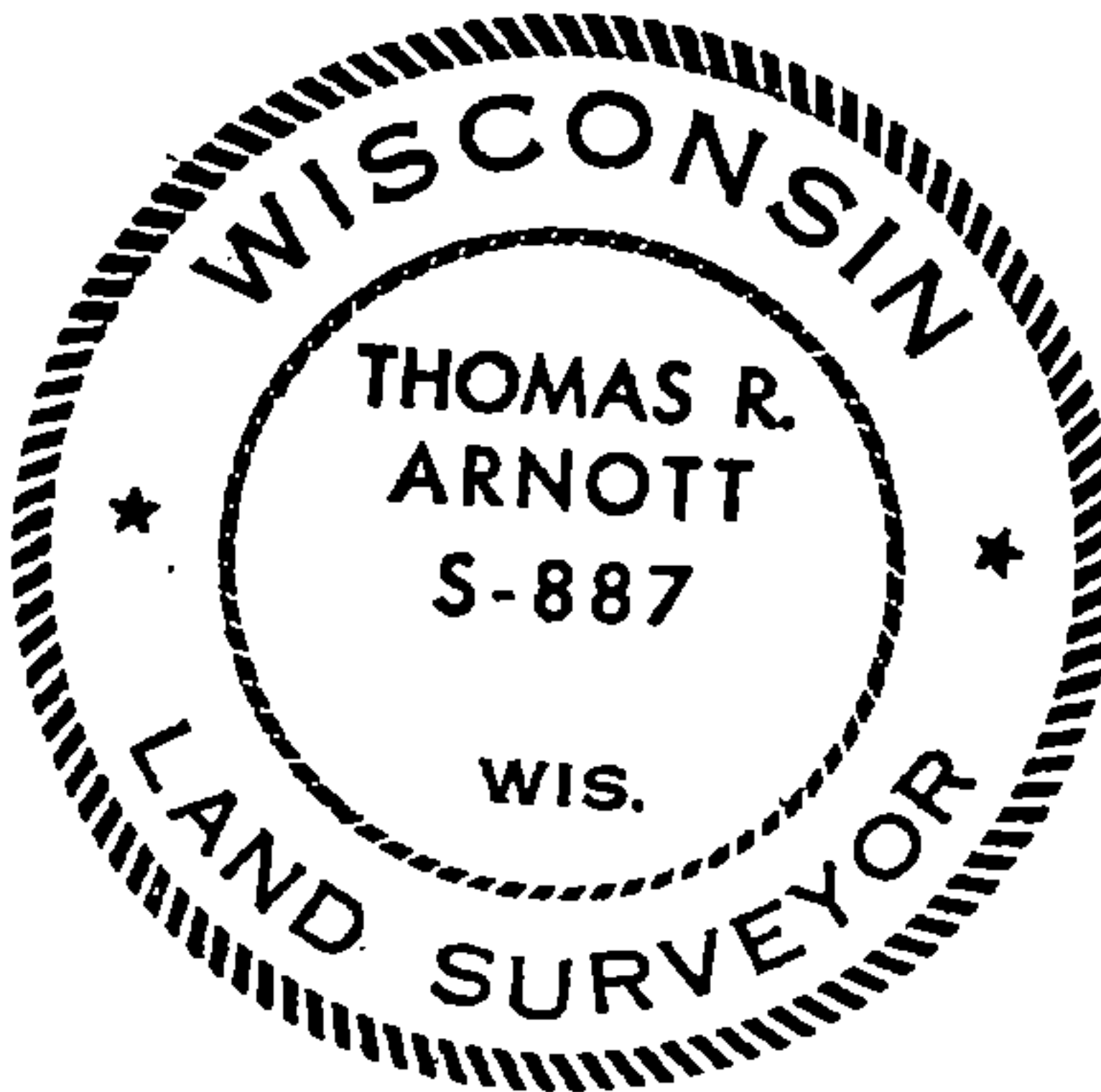
iron pipe found
wood post found

Description of monument and accessories I established to perpetuate the original location of this corner.

reset iron pipe with a new Forest County aluminum monument

Ties:

Oak 8" N61E 15.92 feet
Oak 6" S22W 10.15 feet
Oak 6" N62W 18.20 feet (BT found)



Dated at Crandon, Wis., this 11th day of November, 19 75.

Signature Thomas R. Arnott Title Land Surveyor Registration No. S-887
(County Surveyor, Registered Land Surveyor, or other duly authorized official)

Office of Register of Deeds, County of Forest, I hereby certify that the within
instrument was filed in this office for record on the 11th day of November, 19 75
at 4 o'clock P. M.

Eugene Stutzman Document Number **108213**
(Register of Deeds)

By _____ Deputy

FORM 985 H. C. MILLER CO., MILWAUKEE

43512 3410020