

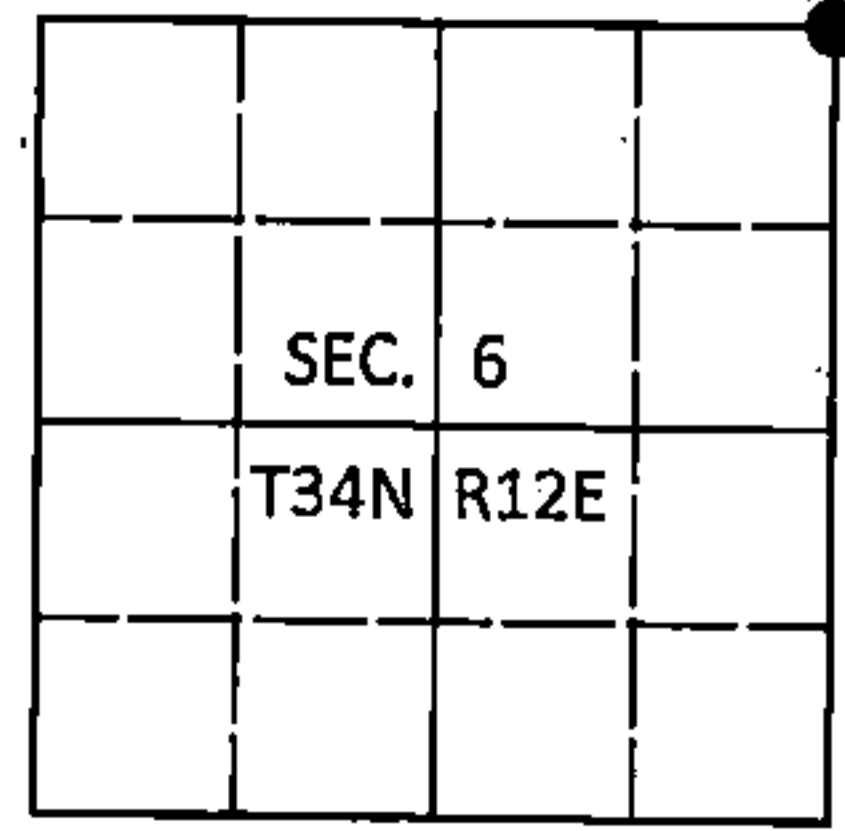
225159

U.S. PUBLIC LAND SURVEY MONUMENT RECORD

Note: This form is intended and designed to fulfill all requirements of Wisconsin Administrative Code, Chapter A-E 7.08 U.S. Public Land Survey Monument Record (3)(a-l).

(a) CORNER LOCATION
Cor. of Secs. 5, 6, 31 & 32
Township 34 & 35 North
Range 12 East of the 4th P.M.
Town of Ainsworth/Nashville
County of Langlade/Forest

WISCORS - Langlade County
N: 458,480.94 USft
E: 653,081.16 USft
WISCORS - Forest County
N: 532,132.68 USft
E: 804,440.07 USft
Datum: NAD 83(2011)
GNSS Method: WISCORS RTN



(b) HISTORY OF ORIGINAL CORNER ESTABLISHMENT

Original Surveyor: Alfred Millard

Original Accessories:

Date of Survey Commenced: August, 1857
Completed: August, 1857

Tamarack 12" N13°W, 19 lks.
Tamarack 12" N82°E, 34 lks.
Spruce 10" S47°E, 38 lks.
Spruce 10" S42°W, 144 lks.

(b)(f)(g)(h) Description of monument found at this corner and if it was accepted, state all evidence (material, testimonial, occupational, plats, records, other monuments) used as a basis for accepting. If not accepted or if nothing was found, state evidence used as basis for establishing location. If re-established through lost corner proportionate methods, indicate all monuments, distances and directions used to establish. Indicate type of monument and sign post found or set.

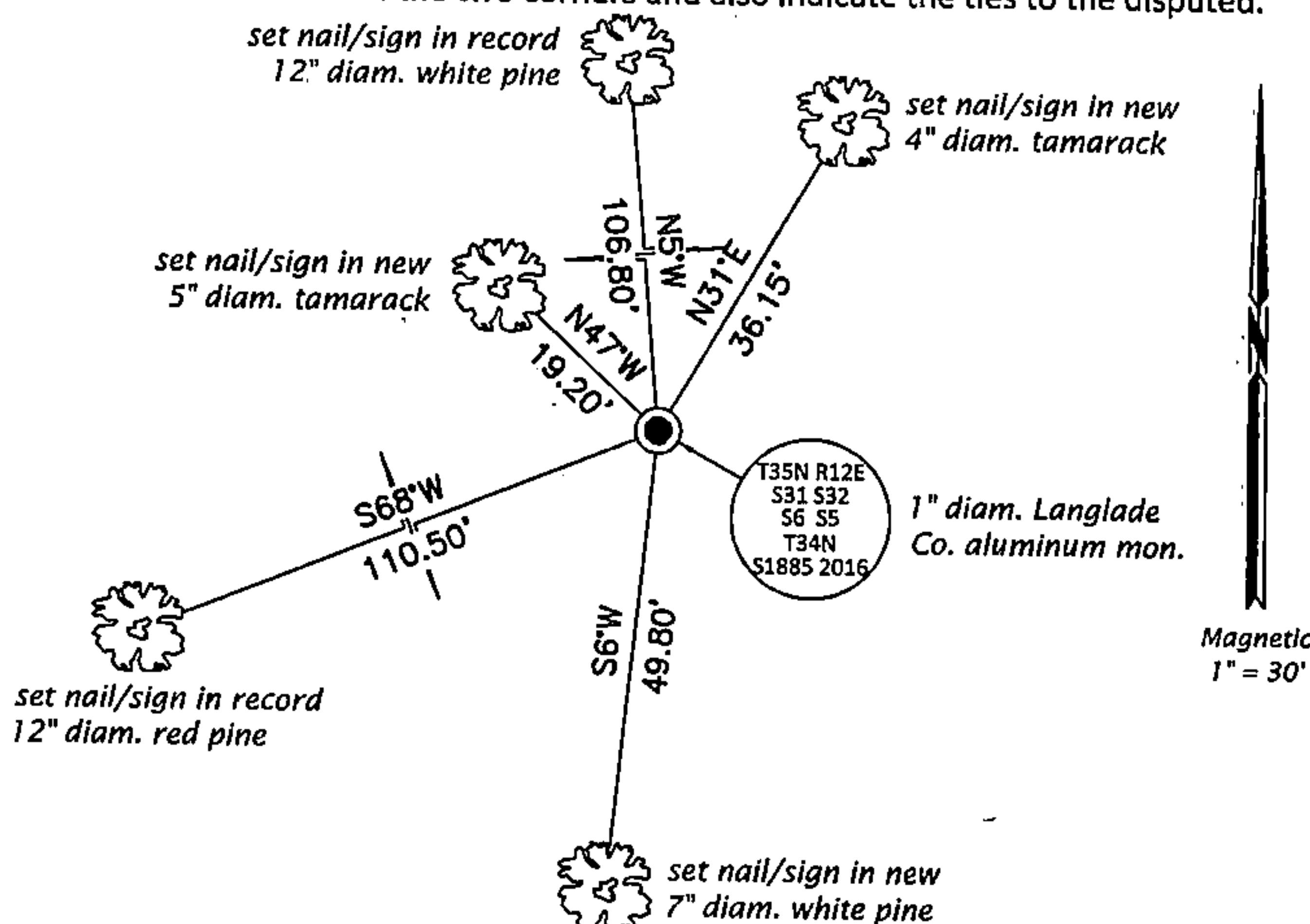
This is a perpetuation of a previous USPLS Monument Record by William F. Kelly, RLS dated December 9, 1986 and filed in the office of the Langlade County Surveyor. A complete history of the corner can be found on the previous monument record. I accept the previous location as a true and faithful perpetuation or reestablishment of the original corner location and further perpetuate it as follows.

To augment the record:

1932-1934: Survey notes by Charles W. Borth, Langlade County Surveyor Record #10317. "Original Spruce 10-S42°W 144 lks. is spruce pine stub. Tree has fallen, face rotten and partly burnt. Other BT's gone. Old stake. Set and scribed new stake and drove angle iron on S. side. New BT's: W. Pine 14 N82-1/2°W, 150.6 ft., Y. Pine 10 S64-1/2°W, 110.8 ft."

November 11, 2016: I found and accepted the record monument, a 5" sq. wood post with steel fence post adjacent by Kelly. In place of the post, I set a 1" diam., 42" long aluminum pipe with a 3-1/4" diam. Langlade Co. aluminum cap projecting 2" above the bog surface. I set a DEEP-1 magnet adjacent to the monument. I found Kelly's pine at N67°E standing dead and Borth's pine at N82°W lying on the ground. I found or established accessories as shown below. I set a white vinyl sign post bearing Northeast, 0.7 ft.

(c)(d)(e) Plan view of corner with ties to at least 4 witness monuments. If in disagreement with previously established corner, show the distances between the two corners and also indicate the ties to the disputed.



FOREST COUNTY, WI
CORTNEY BRITTEN CLEEREMAN
REGISTER OF DEEDS
RECEIVED FOR RECORD

APR 27 2018

Time: 10:00 A.M.
Vol.: Corner Restoration
Page Number: 2-5



(i) I, Jeffrey W. Austin, Professional Land Surveyor No. S-1885, hereby certify that the corner location on this record was determined by me or under my direction and control and that this U.S. Public Land Survey Monument Record is correct and complete to the best of my knowledge and belief.

Handwritten signature of Jeffrey W. Austin.

May 4, 2017
Date

3512310000 (INDEX NO. A-5)

43512310000