

239582

REGISTER OF DEEDS OFFICE
FOREST COUNTY
FILED

FEB 21 2023

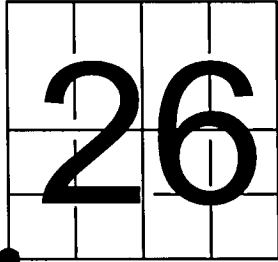
CORTNEY BRITTEN CLEEREMAN
REGISTER OF DEEDS

U S PUBLIC LAND SURVEY MONUMENT RECORD

NOTE: This form is intended and designed to fulfill all requirements of Wisconsin Administrative Code, Chapter A-E 7.08 U.S. Public Land Survey Monument Record (3) (a-i)

A-E 7.08(3)(a) Identity of corner
SOUTHWEST CORNER OF SECTION 26
TOWNSHIP 35 NORTH
RANGE 12 EAST OF THE 4TH PM
TOWN OF NASHVILLE
COUNTY OF FOREST

WISCRS - FOREST COUNTY
N: 537666.58 USft
E: 820252.70 USft
Datum: NAD83 (2011)
GNSS Method RTN - Direct
GNSS Control WISCORS VRS



The coordinate value shown has been verified by the average of two or more GPS observations at a markedly different time.

A-E 7.08(3)(b) Description of any record evidence, monument evidence, occupational evidence, testimonial evidence, or any other material evidence.

Original Surveyor: JAMES L. NOWLIN

Date of Original Survey	Commenced:	JUNE 26, 1865	Original Accessories:		
	Completed:	JULY 7, 1865	Y. PINE	14	N 01° E 160 Links
			Y. PINE	13	N 07° W 190 Links

NOV. 10, 1975 - Surveyor S-887 - Thomas R. Arnott - indicates this position as Forest County Aluminum Monument reset from found 2" Iron Pipe with Wooden Post on USPLSS Monument Record #43512270000. Arnott noted the following ties:

W. Pine	16"	N47E	9.88 feet	(BT Found)
Spruce	6"	S73E	14.95 feet	(BT Found)
R. Pine	20"	S09E	35.66 feet	(BT Found)

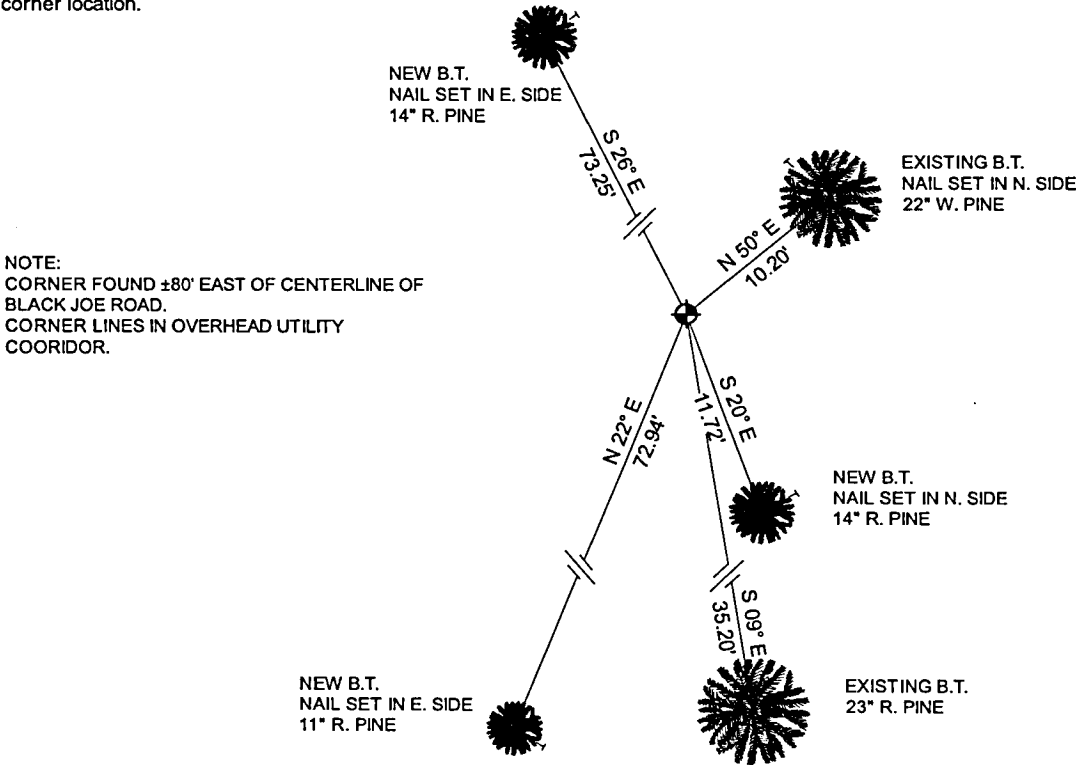
May 18, 2001- Surveyor S-2197 - Michael A. Trembl - indicates this position as a Forest County Aluminum Monument found in place on Map #321235-20010518.

A-E 7.08(3)(f) Whether the corner was restored through acceptance of an obliterated location or a found perpetuated location.

April 17, 2021 - I found a Forest County Aluminum Monument and referenced corner as shown below.

I accept this monument as a FOUND PERPETUATED LOCATION OF THE CORNER and established 4 new witnesses as shown below.

A-E 7.08(3)(c)(d)(e)(h) Plan view of corner with references to at least 4 witness monuments. If in disagreement with previously established corner, show the distances between the two corners and also indicate the ties to the disputed. The directions and distances to other public land survey corners used as evidence or used for determining the corner location.

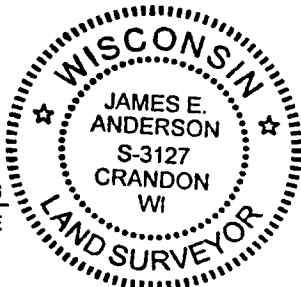


A-E 7.08(3)(i) I, James E Anderson, Professional Land Surveyor No. S-3127, hereby certify that the corner location on this record was determined by me or under my direction and control and that this U.S. Public Land Survey Monument Record is correct and complete to the best of my knowledge, and belief

SIGNATURE

James E. Anderson

FEBRUARY 12, 2023
DATE



43512270000

V-17