

Document Number
195688

REGISTER'S OFFICE
Forest County, Wis.
Received for record this 17th day
of October A.D., 2007 at
9:00 o'clock A M. and recorded
in Vol. Corner Restoration
page N-3

Kay Swanson, Deputy
Register of Deeds

Project # 506

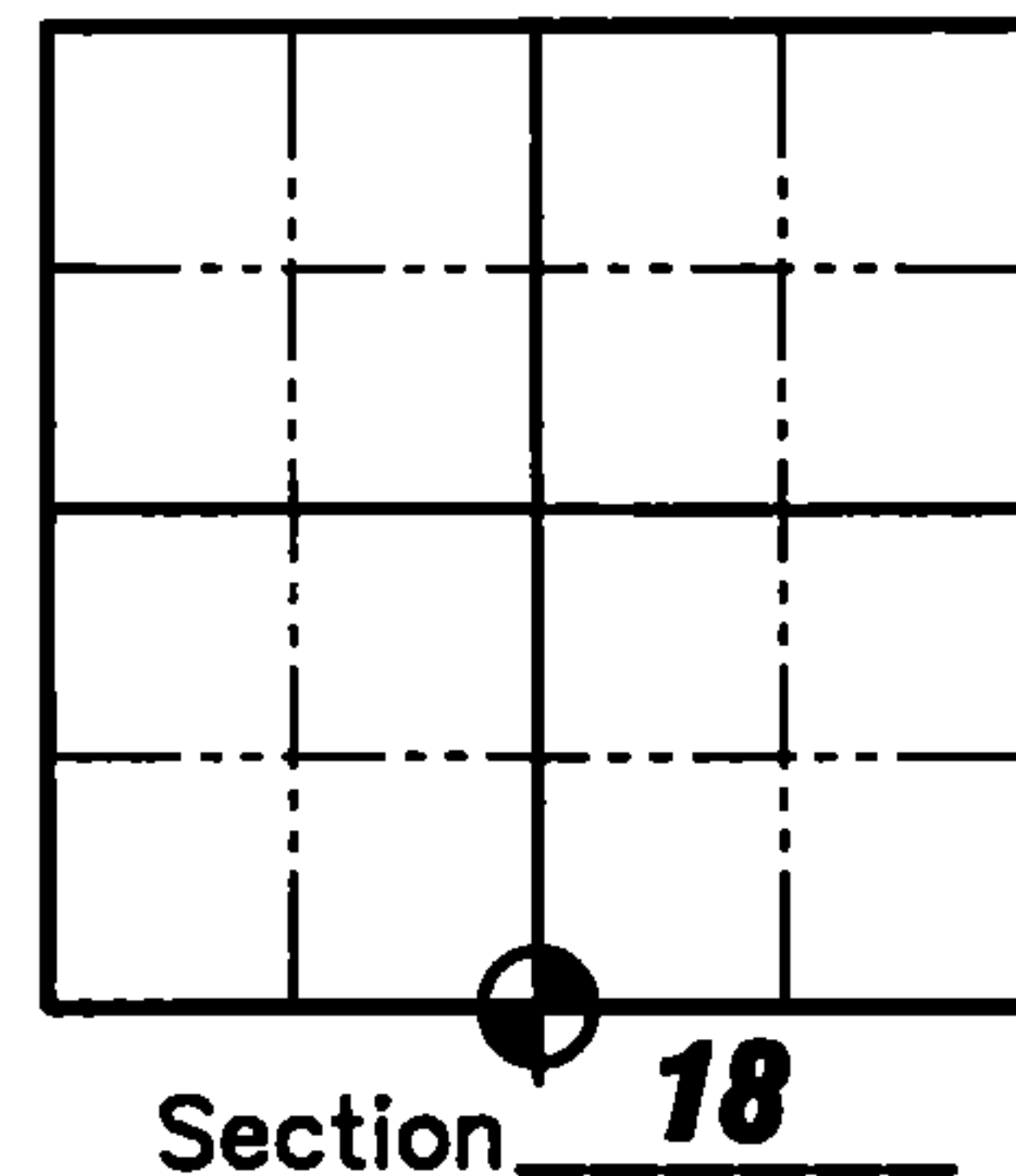
U.S. PUBLIC LAND SURVEY MONUMENT RECORD

NOTE: This form is intended and designed to fulfill all requirements of Wisconsin Administrative Code, Chapter A-E 7 .08 U.S. Public Land Survey Monument Record (3)(a)(b)(c)(d)(e)(f)(g)(h)(i). An additional sheet may be added if necessary to conform with said requirements.

(a) Corner location: Township 35 North
Range 12 East/West

Town of Nashville

County of Forest



(b)(f)(g)(h) Description of monument found at this corner and if it was accepted, state all evidence (material, testimonial, occupation, plats, records, other monuments) used as a basis for accepting. If not accepted or if nothing was found, state evidence used as a basis for establishing location. If reestablished through lost corner proportionate methods, indicate all monuments, distances and directions used to establish. Indicate type of monument found or set and sign post.

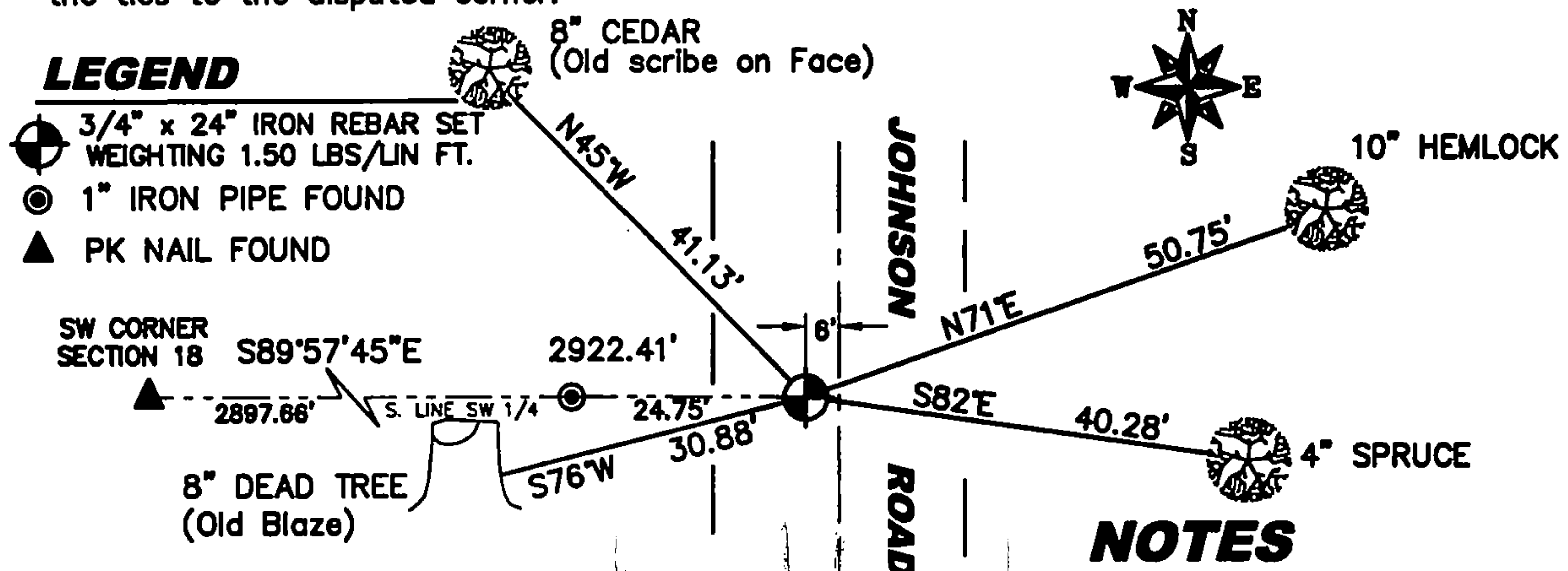
1859 - H.C. Fellows, Deputy Surveyor, set original corner. BT's: 12" Aspen, N62°W, 12 links, 12" Maple, S46°W, 12 links.

June/1920 - I.R. Ritter reestablished the South 1/4 corner but, does not specify what was found or set at corner. He set new BT's: 4" Cedar, East, 38 links, 4" Cedar, West, 38 links.

June/1984 - William F. Kelly recovered two old BT's (no information on species or location). He also found a 1" iron pipe on the West side of Johnson Road. He set a Railroad Spike 24.75' East of the 1" iron pipe. No new ties indicated.

December/2003 - Matthew E. Hogle found a 8" Cedar with old scribing in good condition. We searched near the Centerline of Johnson Road and found a Railroad Spike bent over and 24' West we found a 1" iron pipe. We retraced William Kelly's Certified Survey Map (Volume 3, Page 139) and reestablished the corner from his Certified Survey Map and set a 3/4" iron rebar at the corner location. We also set 4 new ties as shown below.

(c)(d)(e) Plan view of corner with ties to at least 4 witness monuments. If in disagreement with previously established corner, show the distances between the two corners and also indicate the ties to the disputed corner.



NOTES

1. All distances are to a P.K. nail set in base of tree.
2. All bearings are taken with a compass.
3. Drawing is NOT to scale.

(i) I, Matthew E. Hogle, certify that the corner location on this record was determined by me under my direction and control and that this U.S. Public Land Survey Monument is correct and complete to the best of my knowledge and belief.

Signature

Matthew E. Hogle
S-1910
TOMAHAWK
WI
LAND SURVEYOR

Date

10/16/07

43512180020

N-3