

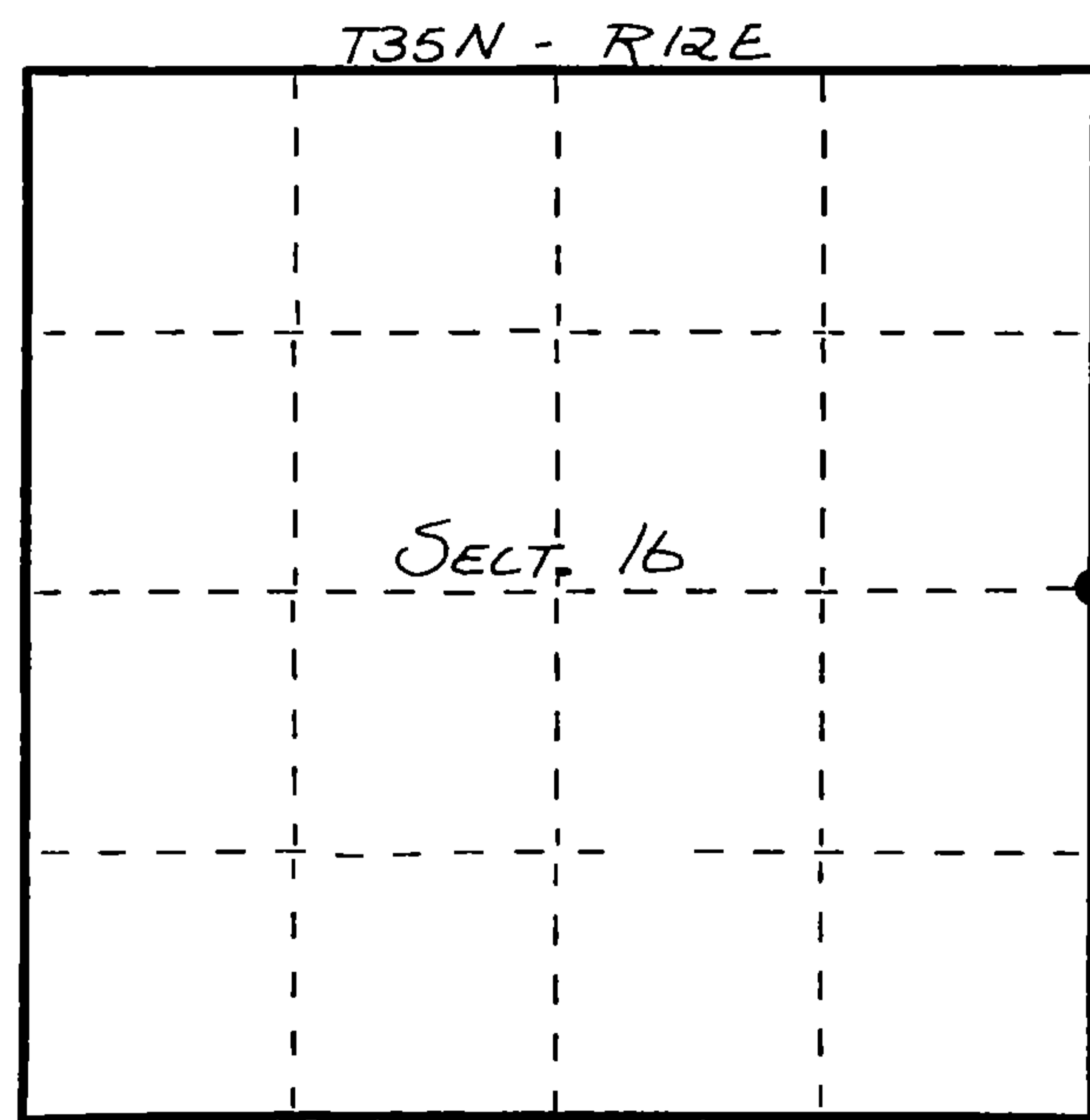
FORM 985 H. C. MILLER CO., MILWAUKEE

State of Wisconsin }
County of FOREST } ss.

I WILLIAM F. KELLY, do hereby certify that on the 19th day of MAY, 1983, I found evidence of the EAST 1/4 corner of SECTION 16 Township 35, North, Range 12 EAST, Fourth Principal Meridian, as described hereon; and that from this evidence I established a new monument and accessories as described hereon to perpetuate the original location of this corner.

Resident witnesses:

.....
.....
.....



○ = Corner monument restored.

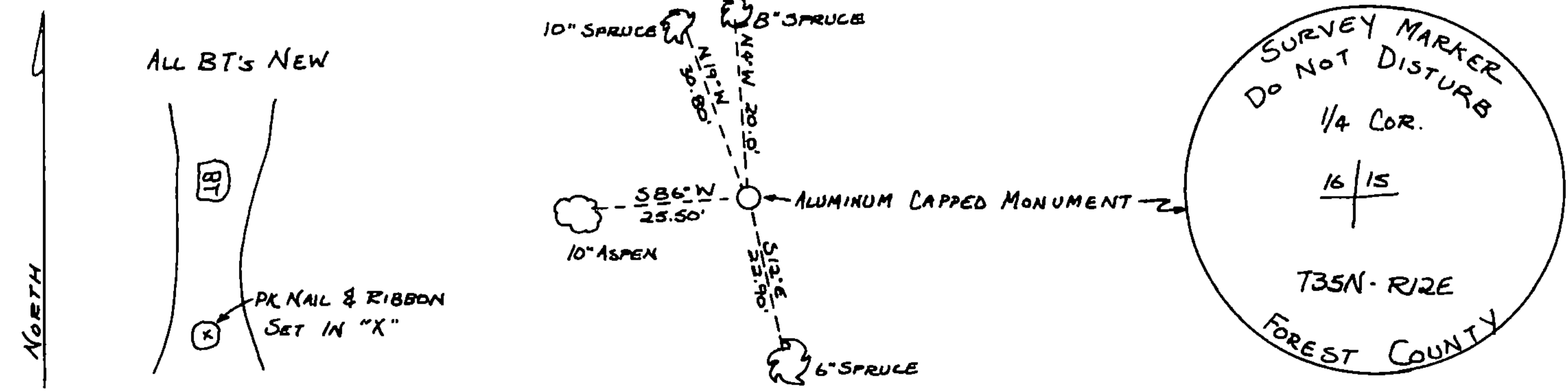
CERTIFIED LAND CORNER RESTORATION
U.S. PUBLIC LAND SURVEY MONUMENT RECORD
History of original corner establishment:
ORIGINAL CORNER ESTABLISHED BY
JAMES L. NOWLIN IN JUNE-JULY, 1865.

Index No. **L 13**
2-13

Description of corner evidence found:

ESTABLISHED CORNER AT MIDPOINT OF LINE BETWEEN NE & SE CORNERS OF SECT. 16. SET ALUMINUM CAPPED MONUMENT & 3x3 SPRUCE POST NEXT TO MONUMENT.

Description of monument and accessories I established to perpetuate the original location of this corner.



Dated at ELCHO, Wis., this 19th day of MAY, 1983.

Signature William F. Kelly Title LANGLADE COUNTY SURVEYOR Registration No. 1098
(County Surveyor, Registered Land Surveyor, or other duly authorized official)

Office of Register of Deeds, County of Forest, I hereby certify that the within instrument was filed in this office for record on the 27th day of May, 1983 at 11:00 o'clock A. M.

Eugene Stetson
(Register of Deeds)
By..... Deputy



William F. Kelly
5-24-83

DOCUMENT NO.
123175

43512162000