

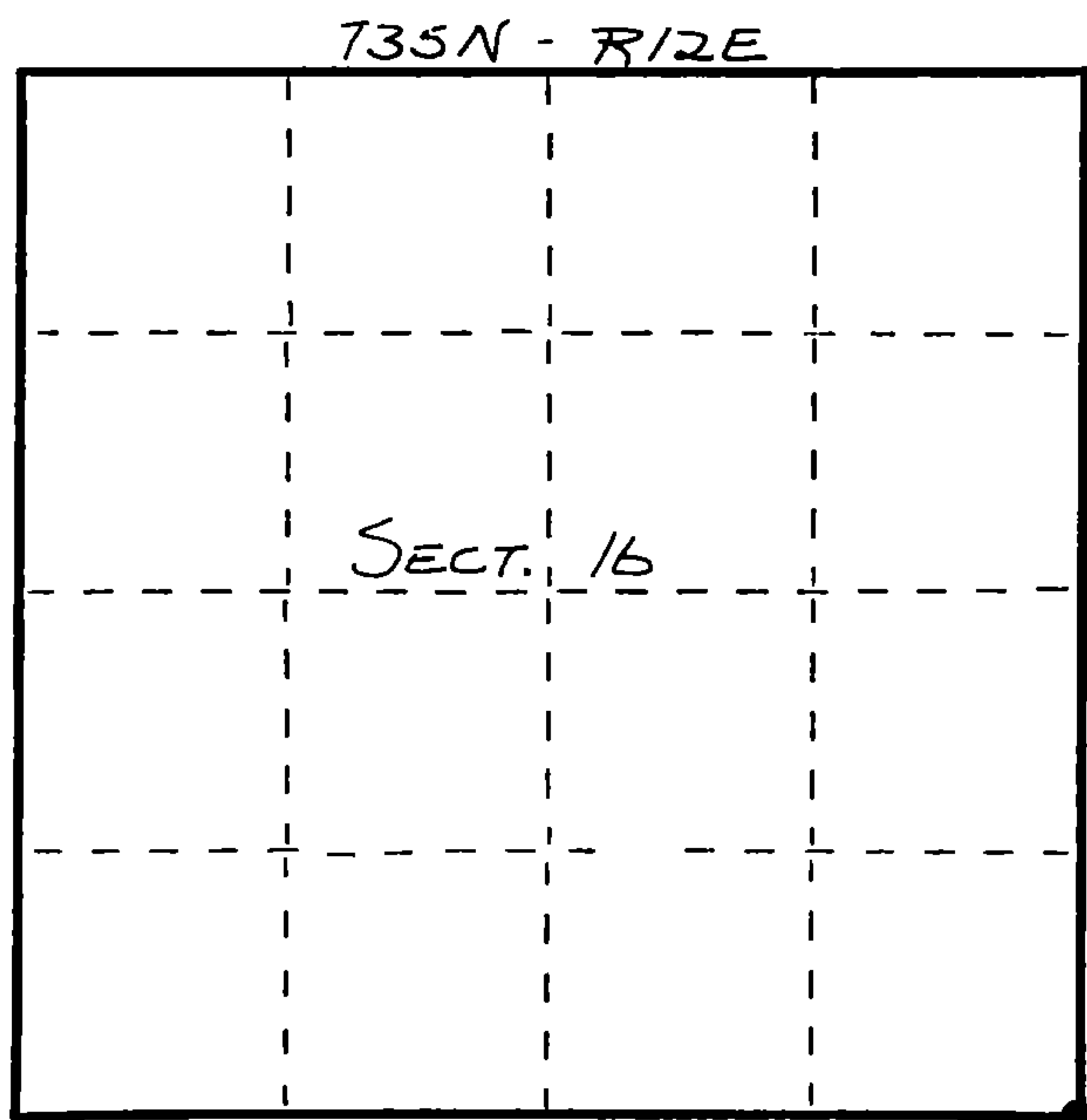
FORM 985 H. C. MILLER CO., MILWAUKEE

State of Wisconsin }
County of FOREST } ss.

I WILLIAM F. KELLY, do hereby certify that on the 19th day of MAY, 1983, I found evidence of the SE corner of SECTION 16 Township 3S, North, Range 12 EAST, Fourth Principal Meridian, as described hereon; and that from this evidence I established a new monument and accessories as described hereon to perpetuate the original location of this corner.

Resident witnesses:

.....
.....
.....



○ = Corner monument restored.

CERTIFIED LAND CORNER RESTORATION
U.S. PUBLIC LAND SURVEY MONUMENT RECORD

History of original corner establishment:
ORIGINAL CORNER ESTABLISHED BY
JAMES L. NOWLIN IN JUNE-JULY, 1865.

Index No. **N13**
N-13

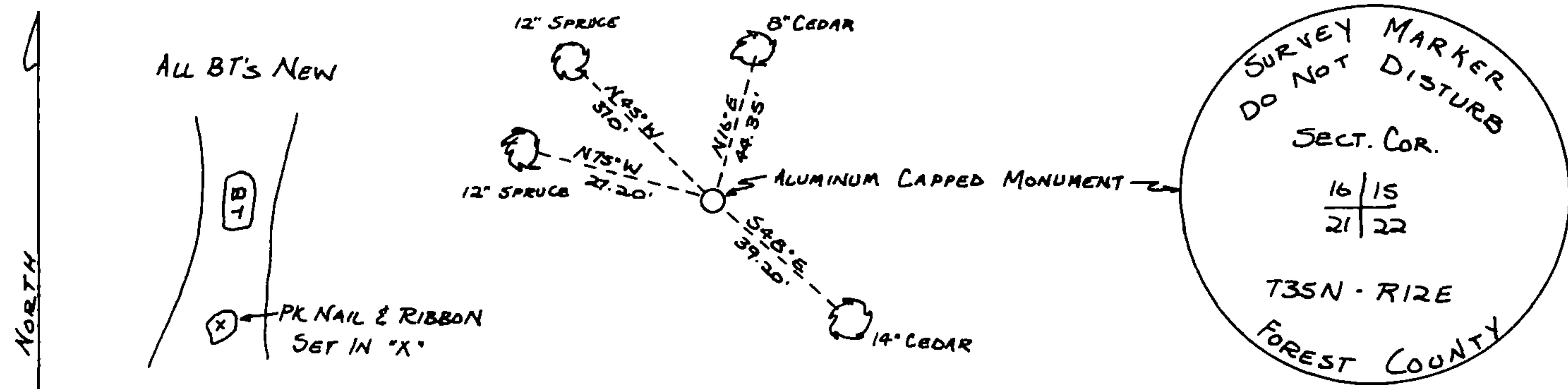


William F. Kelly
5-24-83

00000121534

Description of corner evidence found:
REPLACED 4x4 POST & LOCATION TAG,
FOUND IN PLACE, WITH ALUMINUM
CAPPED MONUMENT.

Description of monument and accessories I established to perpetuate the original location of this corner.



Dated at ELCHO, Wis., this 19th day of MAY, 1983.

Signature William F. Kelly Title LANGLADE COUNTY SURVEYOR Registration No. 1098
(County Surveyor, Registered Land Surveyor, or other duly authorized official)

Office of Register of Deeds, County of Forest, I hereby certify that the within instrument was filed in this office for record on the 27th day of May, 1983 at 11:00 o'clock A. M.

Eugene Stutzman
(Register of Deeds)
By _____ Deputy

DOCUMENT NO.
123176