

CERTIFIED LAND CORNER RESTORATION
U.S. PUBLIC LAND SURVEY MONUMENT RECORD

Index No. G-21

G 21

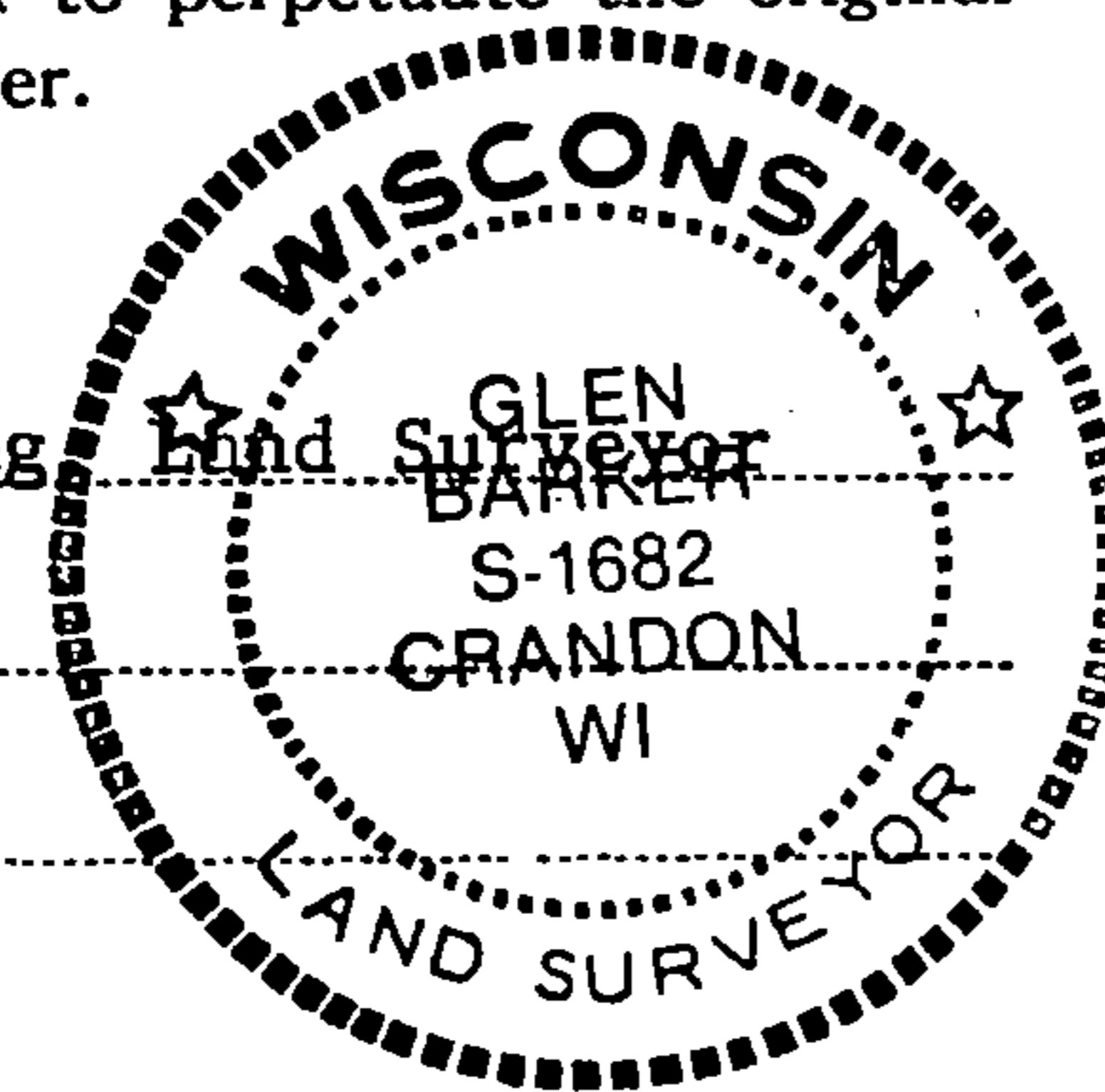
State of Wisconsin }
 County of Forest } ss.

I Glen Barker, do hereby certify that on the 28th day of September, 1983, I found evidence of the quarter corner of Sections 11 & 12 Township 35, North, Range 12 East, Fourth Principal Meridian, as described hereon; and that from this evidence I established a new monument and accessories as described hereon to perpetuate the original location of this corner.

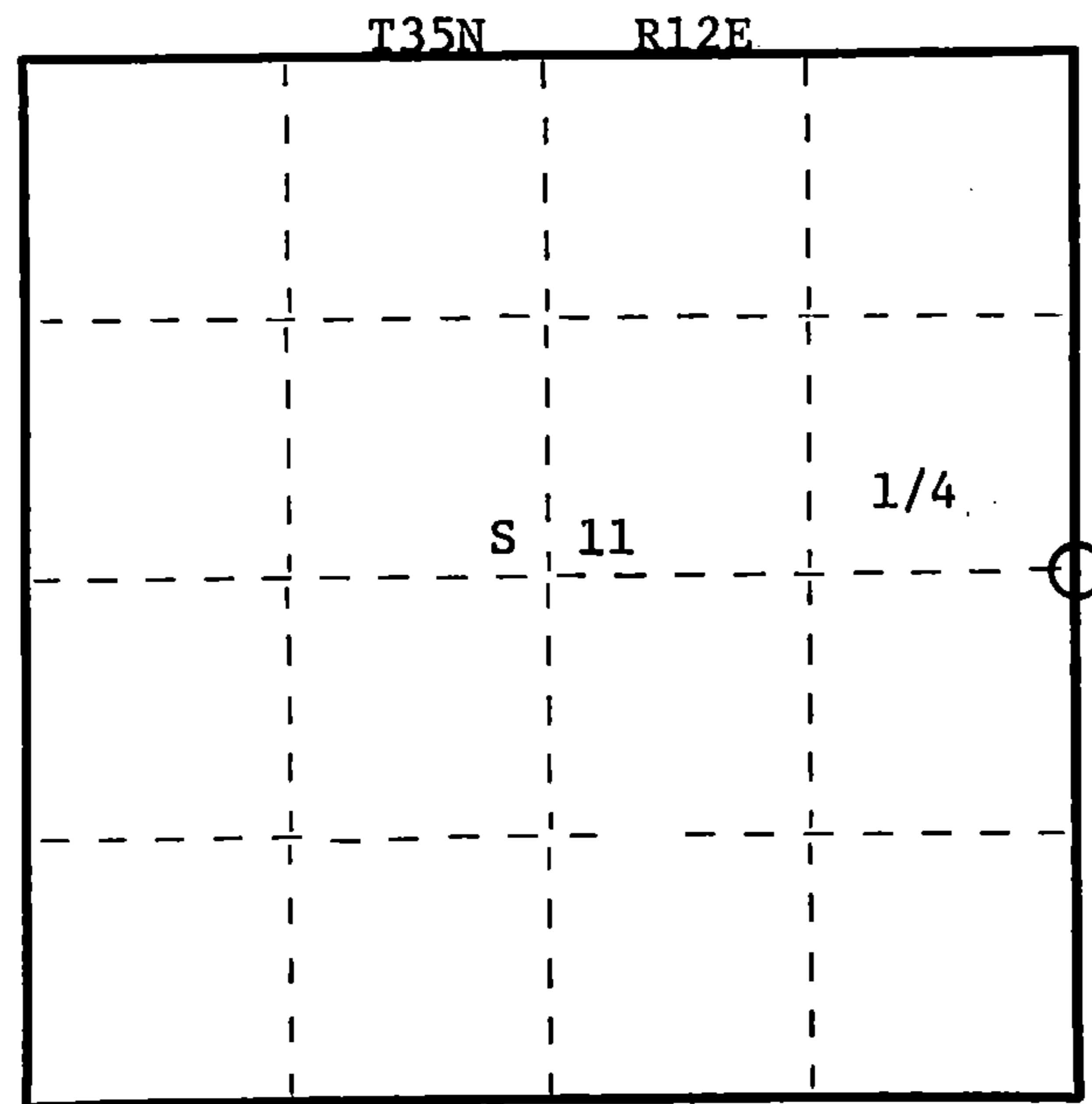
Resident witnesses:

J. Claflin, Reg.

H. Wagoner



FORM 985 H. C. MILLER CO., MILWAUKEE



○ = Corner monument restored.

History of original corner establishment:

Original corner established by James L. Nowlin, gov. deputy surveyor in 1865 from which Birch 12" bears S46W 30 links.

Description of corner evidence found:

Recovered an old 3" squared cedar post scribed S11-S12-1/4 S in corner of old fence line running north-south and west. Also recovered an old cedar stump 18" face with axe marks and some scribe marks still visible.

Description of monument and accessories I established to perpetuate the original location of this corner.

Replaced old post with a 2-1/2" A-1 aluminum Forest County monument, alloy cap stamped: Monument projects 12" above ground.

Marked NBT's:

Cedar 8" S 9°W 63.73'
 Cedar 6" S25°E 46.53' scribed 1/4-B.T.
 Cedar 6" S 6°E 46.45'

T35N R12E
 1/4 11 | 12
 S1682 1983

White Spruce 10" N22W 36.15'
 See reverse side for drawing

Dated at Rhineland, Wis., this 19th day of December, 1983.

Signature Glen Barker Title Registered Land Surveyor Registration No. S-1682
 (County Surveyor, Registered Land Surveyor, or other duly authorized official)

Office of Register of Deeds, County of Forest, I hereby certify that the within instrument was filed in this office for record on the 22nd day of February, 1984 at 11:00 clock A. M.

Eugene Stagny
 (Register of Deeds)

DOCUMENT NO.

125265

By _____ Deputy

43512112000

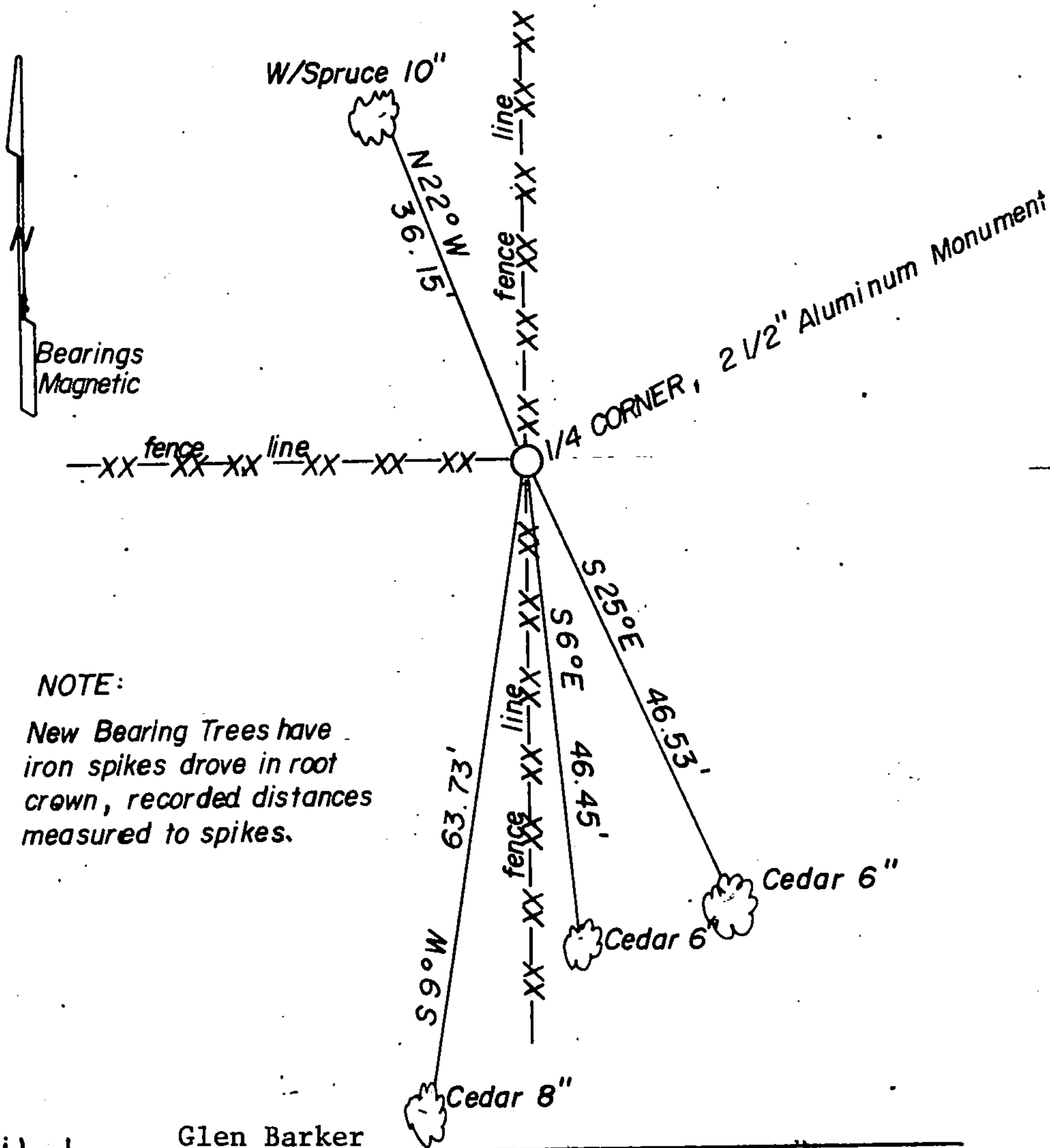
(c) Describe any material discrepancy between the location of the corner as restored or reestablished and the location of that corner as previously restored or reestablished by distance and direction. Show the discrepancy on the plan view drawing under (d), above. Show the distances between the corner as previously restored or reestablished and (1) the corner as restored or reestablished, and (2) to at least 2 of the witness monuments shown on the drawing in (d), above.

See drawing below.

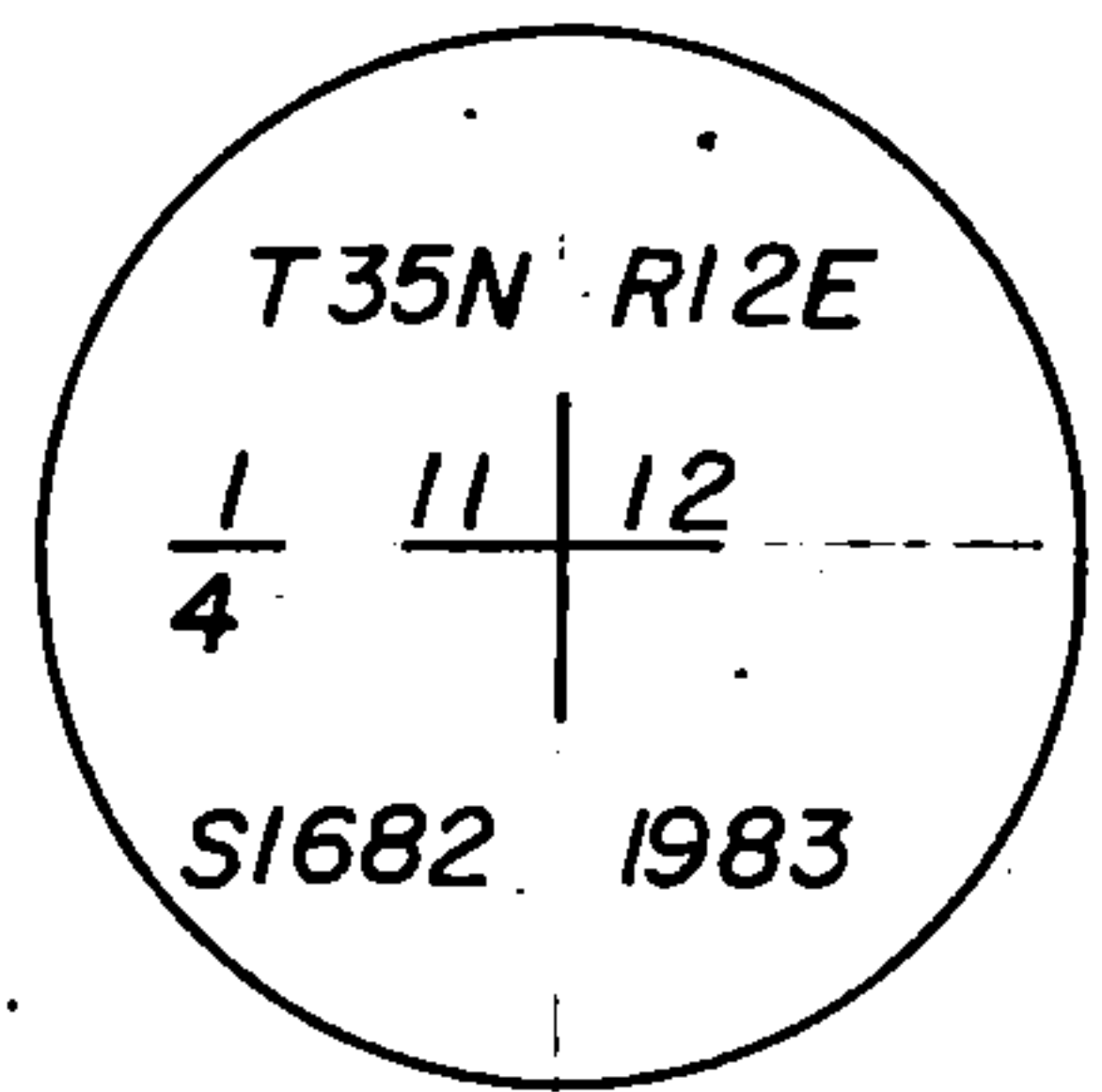
(f) Was the corner restored through acceptance of (1) an obliterated evidence location, or, (2) a found perpetuated location?

Corner was established through acceptance of found perpetuated location as described on reverse side of this form.

(g&h) Was the corner reestablished through lost corner proportionate methods? If so, show the method, including the directions and distances to other public land survey corners used as evidence or used for proportioning in determining the corner location?



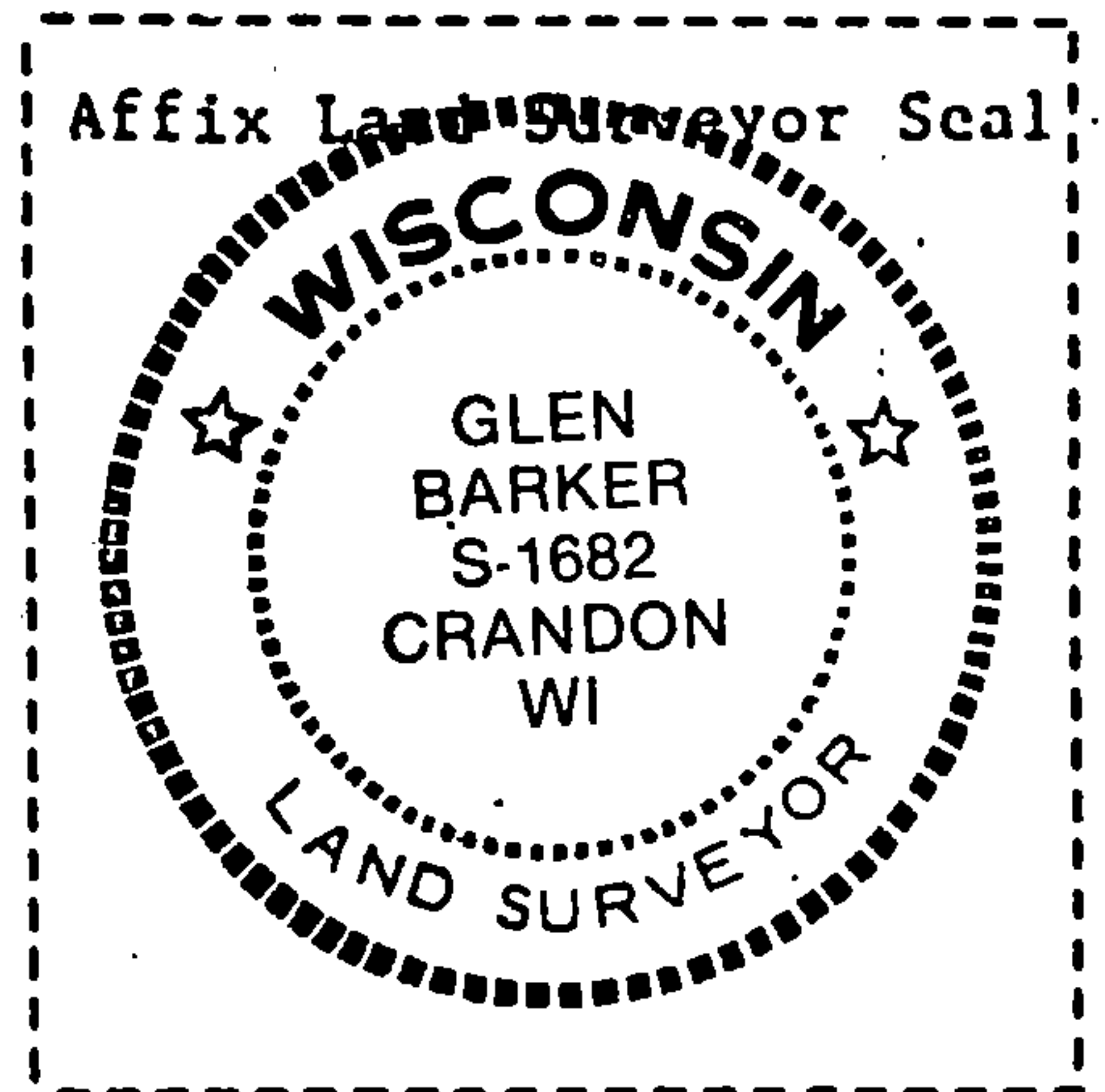
ALLOY CAP STAMPED:



SCALE: 1" = 20'

NOTE:

New Bearing Trees have iron spikes drove in root crown, recorded distances measured to spikes.



(i) I, Glen Barker (type or print name) certify that the corner location shown on this record was determined by me or under my direction and control and that this U.S. Public Land Survey Monument Record is correct and complete to the best of my knowledge and belief.

Glen Barker
Signature

12/23/83
Date