

NOV 08 2023

CORTNEY BRITTEN CLEEREMAN  
REGISTER OF DEEDS

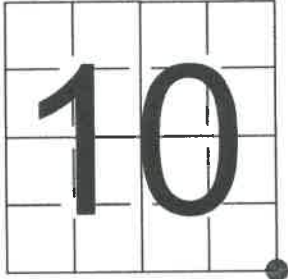
241588

U S PUBLIC LAND SURVEY MONUMENT RECORD

NOTE: This form is intended and designed to fulfill all requirements of Wisconsin Administrative Code, Chapter A-E 7.08 U.S. Public Land Survey Monument Record (3) (a-i)

A-E 7.08(3)(a) Identity of corner:  
SOUTHEAST CORNER SECTION 10,  
TOWNSHIP 35 NORTH,  
RANGE 12 EAST OF THE 4TH PM,  
TOWN OF NASHVILLE,  
COUNTY OF FOREST

WISCORS - FOREST COUNTY  
N: 553,528.580 USft (XXX,XXX.XXX)  
E: 820,385.695 USft (XXX,XXX.XXX)  
Datum: NAD83 (2011)  
GNSS Method RTK  
GNSS Control WISCORS VRS



The coordinate value shown has been verified by the average of two or more GPS observations at a markedly different time. Coordinates shown in parenthesis are previously published values.

A-E 7.08(3)(b)

Original Surveyor: James L. Nowlin

Date of Original Survey    Commenced:    June 26, 1865  
Completed:    July 7, 1865

Original Accessories:  
Birch    12    N 40° E    15 Links  
Hemlock    12    N 20° W    18 Links

See previous Certified Land Corner Restoration - J 17 - May 19, 1983 - Surveyor 1098 - William F. Kelly - THENCE:

May 6, 1999 - Surveyor 1795 - Devon J. Vanden Heuvel - indicates this position as "existing county monument" on Forest Co. Surveyor File #351211-19990506.

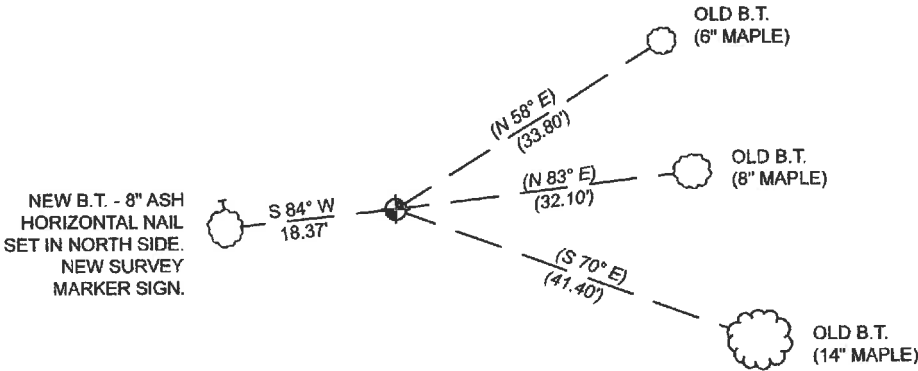
November 29, 2000 - Surveyor 1795 - Devon J. Vanden Heuvel - indicates this position as "existing county monument" on Forest Co. Surveyor File #351211-19990506.

June 19 & 20, 2001 - Surveyor 1451 - Eugene C. Uttech - indicates this position as "found 2" alu monument" on Forest Co. Surveyor File #351214-20010620.

August 02, 2023 - I found a Forest County aluminum monument, being a 2.5" diameter aluminum pipe with a 3.3" diameter aluminum cap stamped to identify the corner. The monument extends ±18" above grade. I also found 3 of Kelly's bearing trees alive and established 1 new bearing tree as shown below.

A-E 7.08(3)(c)(d) Plan view of corner with references to at least 4 witness monuments.

BEARINGS LISTED TO THE NEAREST  
SECOND ARE REFERENCED TO WISCONSIN  
COUNTY COORDINATE REFERENCE  
SYSTEM - FOREST COUNTY ZONE.  
ALL OTHER BEARINGS ARE MAGNETIC.



LEGEND

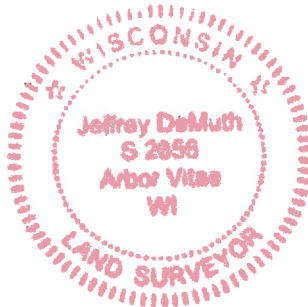
⊕ This Corner



A-E 7.08(3)(e) 1865 Surveyor set a post, 1983 Surveyor set a aluminum capped monument, subsequent surveyors found the same, as did I in 2023.

A-E 7.08(3)(f) I accept this monument as a FOUND PERPETUATED LOCATION of the corner.  
A-E 7.08(3)(g)(h) This corner was not determined through lost-corner-proportionate methods.

A-E 7.08(3)(i) I, Jeffrey L. DeMuth, Professional Land Surveyor No. S-2656, hereby certify that the corner location on this record was determined by me or under my direction and control, and that this U.S. Public Land Survey Monument Record is correct and complete to the best of my knowledge, and belief.



SIGNATURE

September 14, 2023

DATE

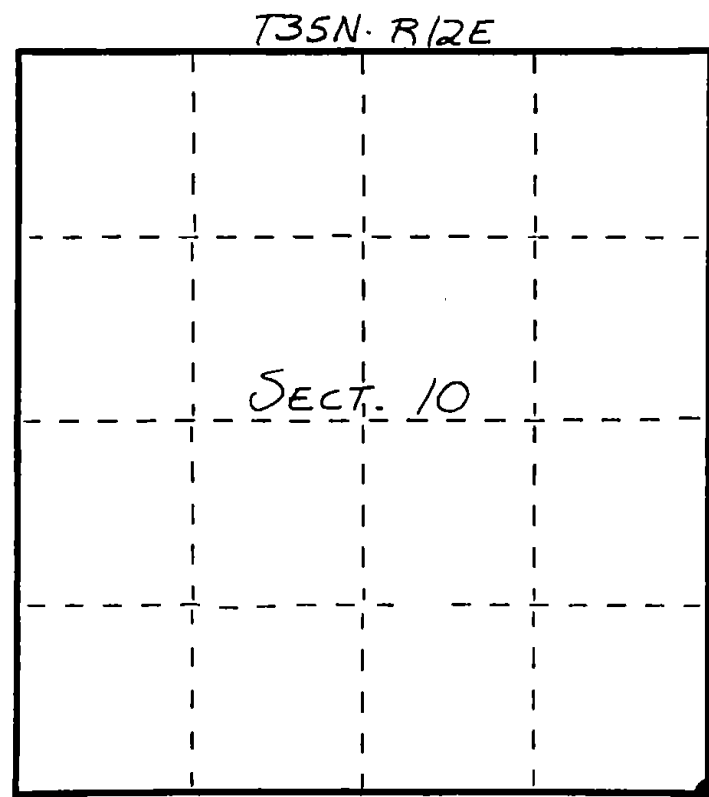
43512100000

J 17

State of Wisconsin }  
County of FOREST } ss.

I WILLIAM F. KELLY, do hereby  
certify that on the 19<sup>th</sup> day  
of MAY, 19 83, I found  
evidence of the SE  
corner of SECTION 10  
Township 35, North, Range  
12 EAST, Fourth Principal Meridian,  
as described hereon; and that from this evidence  
I established a new monument and accessories  
as described hereon to perpetuate the original  
location of this corner.

Resident witnesses:



○ = Corner monument restored.

CERTIFIED LAND CORNER RESTORATION  
U.S. PUBLIC LAND SURVEY MONUMENT RECORD

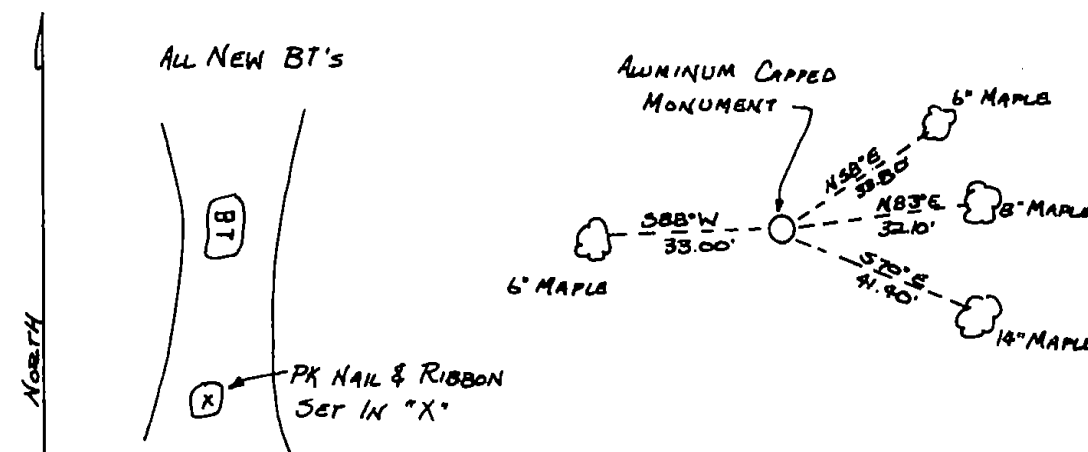
History of original corner establishment:

ORIGINAL CORNER ESTABLISHED BY  
JAMES L. NOWLIN IN JUNE-JULY, 1865.

Description of corner evidence found:

REPLACED 1" IRON PIPE FOUND IN  
PLACE WITH ALUMINUM CAPPED  
MONUMENT. SET STONE PILE  
AROUND CAP.

Description of monument and accessories I established to perpetuate the original location of this corner.



Dated at ELCHO, Wis., this 19<sup>th</sup> day of MAY, 19 83.

Signature William F. Kelly Title COUNTY SURVEYOR Registration No. 1098  
(County Surveyor, Registered Land Surveyor, or other duly authorized official)

Office of Register of Deeds, County of Forest, I hereby certify that the within  
instrument was filed in this office for record on the 27<sup>th</sup> day of May, 19 83  
at 11:00 o'clock A. M.

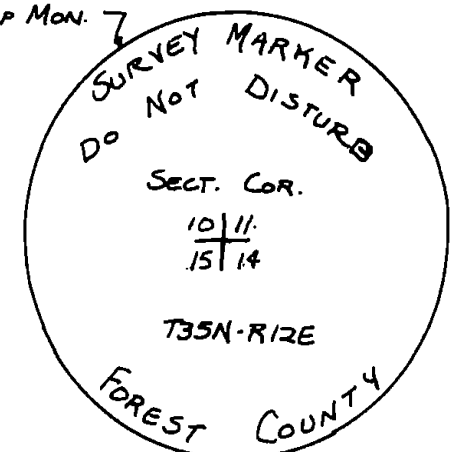
Eugene Stetson  
(Register of Deeds)

By \_\_\_\_\_ Deputy

Index No. J 17



William F. Kelly  
5-24-83



DOCUMENT NO.  
**123471**

43512100000