

Document Number
195687

REGISTER'S OFFICE }
Forest County, Wis. }
Received for record this 17th day
of October A.D., 2007 at
9:00 o'clock A.M. and recorded
in Vol. Corner Restoration
page J-3
Kay Swanson, Deputy
Register of Deeds

Project # 506

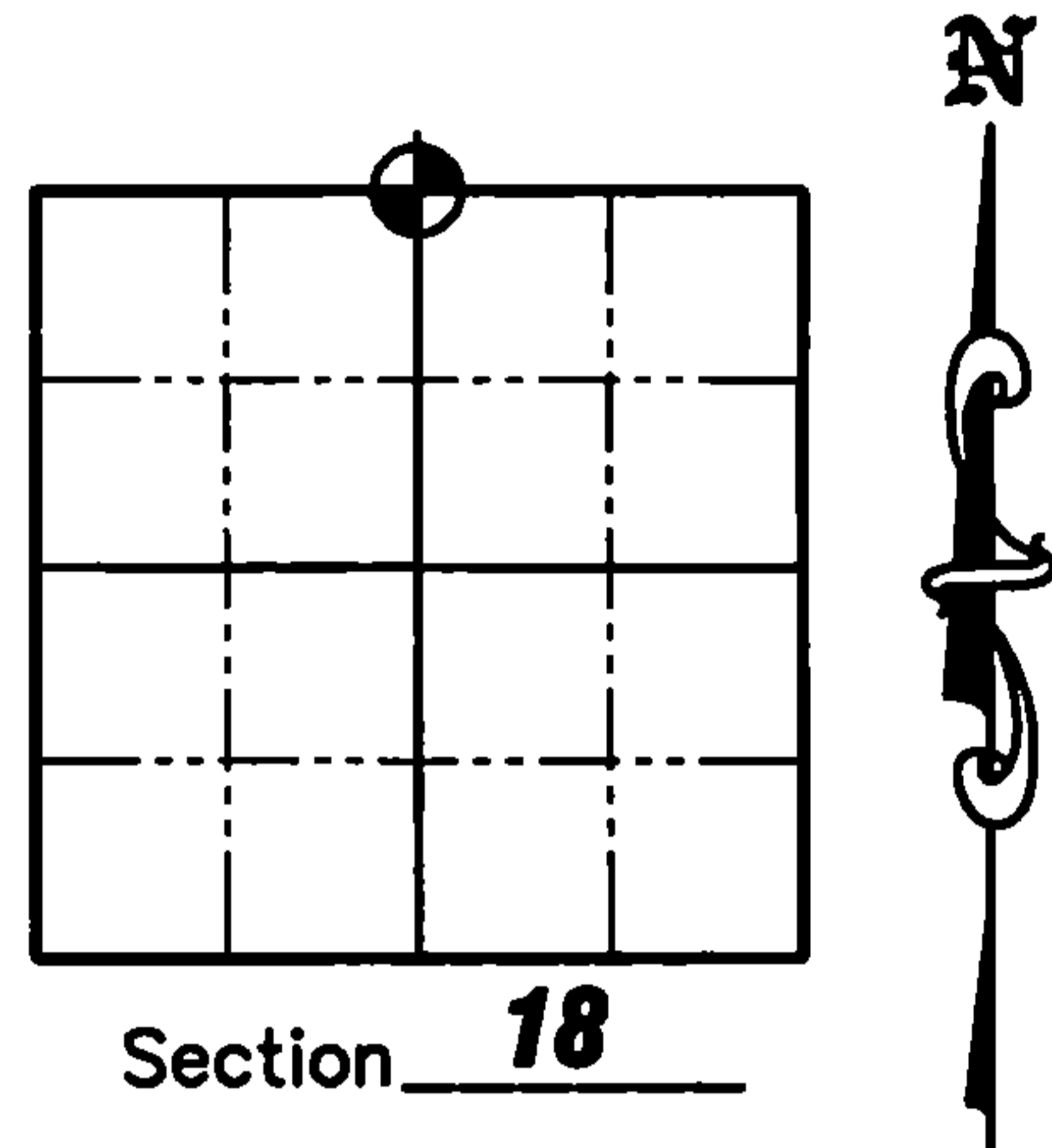
U.S. PUBLIC LAND SURVEY MONUMENT RECORD

NOTE: This form is intended and designed to fulfill all requirements of Wisconsin Administrative Code, Chapter A-E 7.08 U.S. Public Land Survey Monument Record (3)(a)(b)(c)(d)(e)(f)(g)(h)(i). An additional sheet may be added if necessary to conform with said requirements.

(a) Corner location: Township 35 North
Range 12 East/West

Town of Nashville

County of Forest



(b)(f)(g)(h) Description of monument found at this corner and if it was accepted, state all evidence (material, testimonial, occupation, plats, records, other monuments) used as a basis for accepting. If not accepted or if nothing was found, state evidence used as a basis for establishing location. If reestablished through lost corner proportionate methods, indicate all monuments, distances and directions used to establish. Indicate type of monument found or set and sign post.

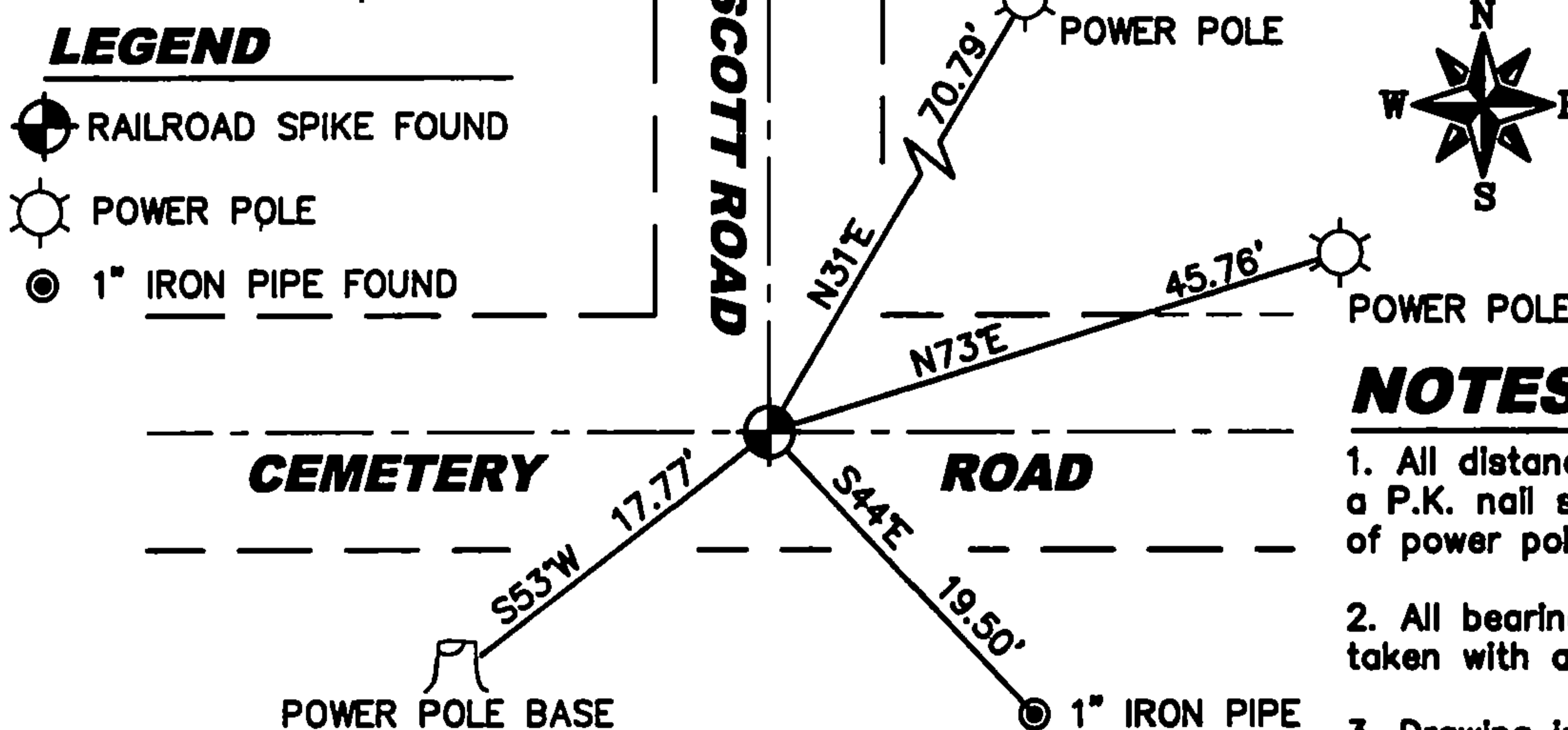
1859 - H.C. Fellows, Deputy Surveyor, set original corner. BT's: 12" Birch, N5°W, 21 links, 10" Maple, S66°W, 8 links.

June/1920 - I.R. Ritter reestablished the North 1/4 corner, but does not specify what was found or set at corner. He set new BT's: 4" Cedar, South, 38 links, 4" Cedar, N60°W, 38 links.

November/2001 - Jeffery K. Inman recovered a Railroad Spike at the North 1/4 Corner of Section 18. He does not indicate any new ties. The Railroad Spike is shown on the right-of-way plat of County Trunk Highway "B".

December/2003 - Matthew E. Hogleund recovered a Railroad Spike at the center line-center line intersection of Scott Road and Cemetery Road and accepted it as the North 1/4 Corner of Section 18. We set 4 new ties to the Railroad Spike as shown below.

(c)(d)(e) Plan view of corner with ties to at least 4 witness monuments. If in disagreement with previously established corner, show the distances between the two corners and also indicate the ties to the disputed corner.



NOTES
1. All distances are to a P.K. nail set in base of power pole
2. All bearings are taken with a compass.
3. Drawing is NOT to scale.

(i) I, Matthew E. Hogleund, certify that the corner location on this record was determined by me under my direction and control and that this U.S. Public Land Survey Monument is correct and complete to the best of my knowledge and belief.

Signature Matthew E. Hogleund Date 10/16/2007
MATTHEW E. HOGLUND
S-1010
TOMAHAWK
WI

43512070020

J-3