

CERTIFIED LAND CORNER RESTORATION

Index No. T-1

State of Wisconsin }
County of Forest } ss.

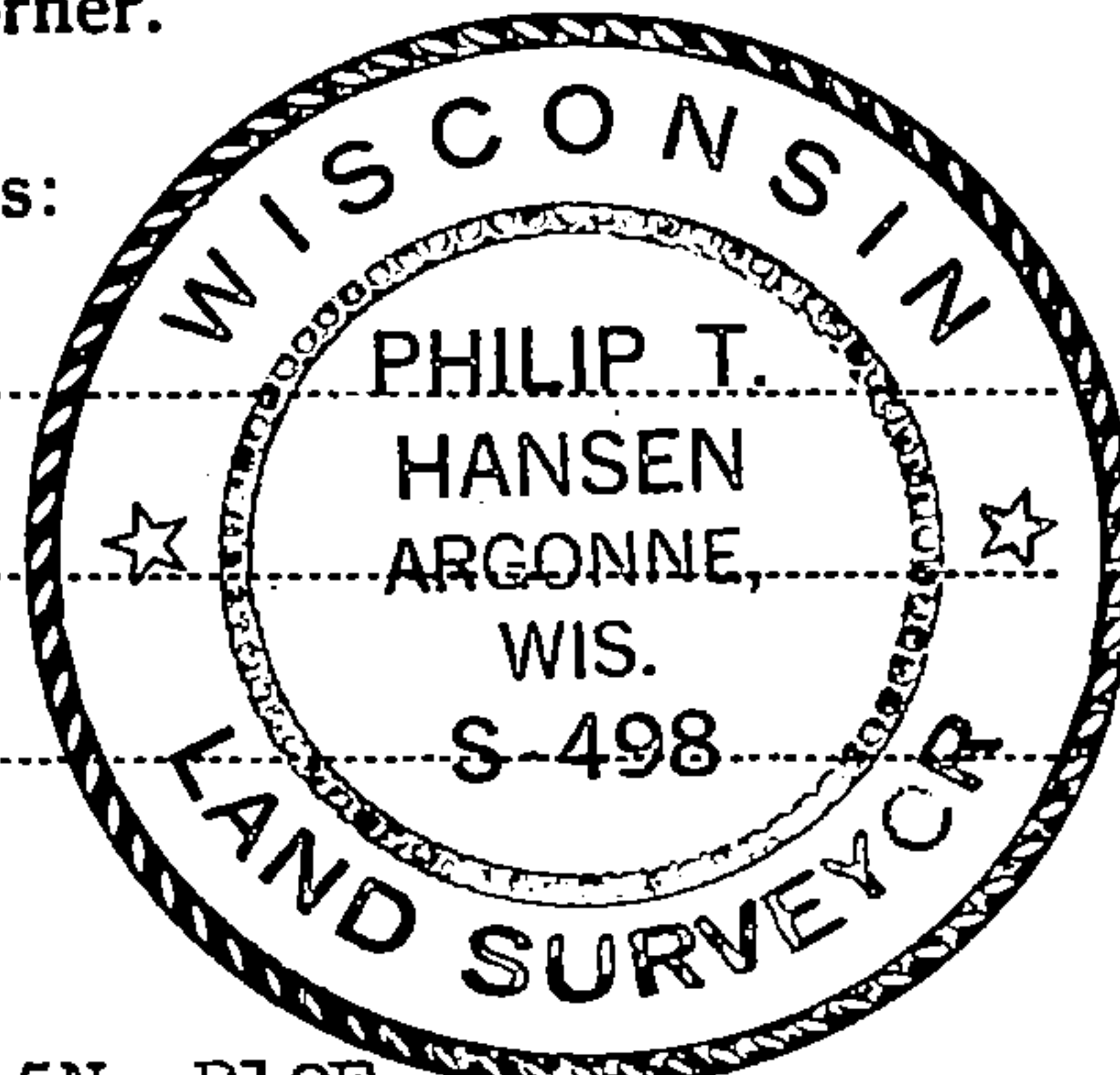
I Philip T. Hansen, do hereby certify that on the 12th day of November, 1976, I found evidence of the Quarter corner of Section 25 - 30 Township 35, North, Range 11 & 12, Fourth Principal Meridian, as described hereon; and that from this evidence I established a new monument and accessories as described hereon to perpetuate the original location of this corner.

Resident witnesses:

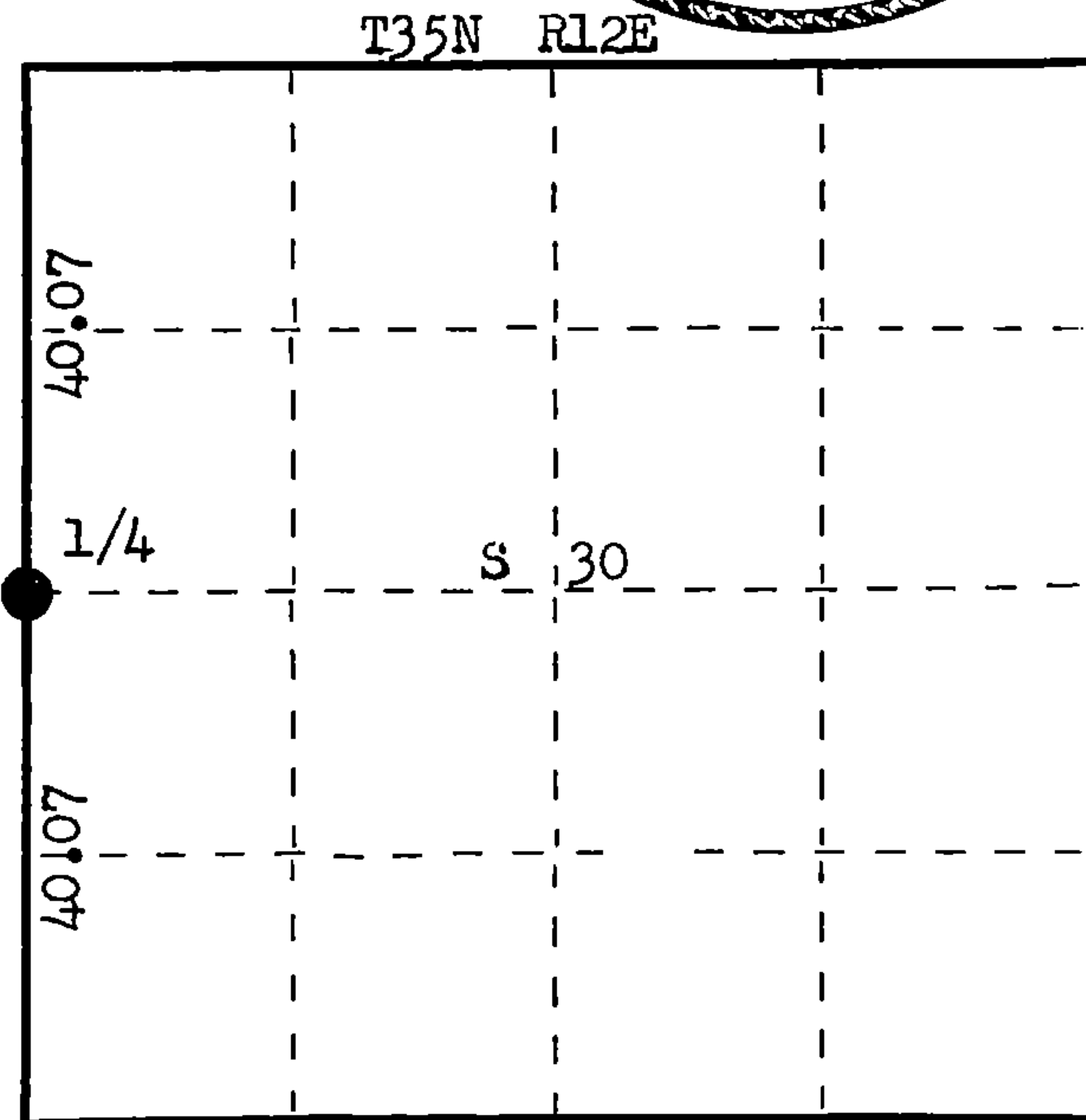
Glen Barker

Jim Claflin

Herb Wagoner



FORM 985 H. C. MILLER CO., MILWAUKEE



○ = Corner monument restored.

History of original corner establishment: Original corner established by Alfred Millard, Deputy Surveyor, in 1857 from which Elm 12" bears N 58° E 17 links, Aspen 15" bears N 78° W 35 links. Corner re-established by H.C. Lawrence, Registered Land Surveyor, in 1958. Corner believed to have been destroyed by road construction. Ran random line south from Section Corner 19, 30, 24, 25 a distance of 80.14 chains along County Trunk M to old post at Section Corner 12 links west. Set 1/4 corner on line at 40.07 chains, equidistant. Set 4" cedar post W.C. 30 links west of corner.

Description of corner evidence found:

Recovered Lawrence's Witness Corner, squared and scribed 1/4S S25, W.C. 30 links west of corner in road. No evidence or records of bearing trees.

Description of monument and accessories I established to perpetuate the original location of this corner.

Drove a 1 1/2" x 15" iron pipe in road 6" below surface for true corner, 30 links east of Lawrence's W.C.

Set a 2 1/2" Berntsen A-1 Federal Monument 70 links west of true corner.

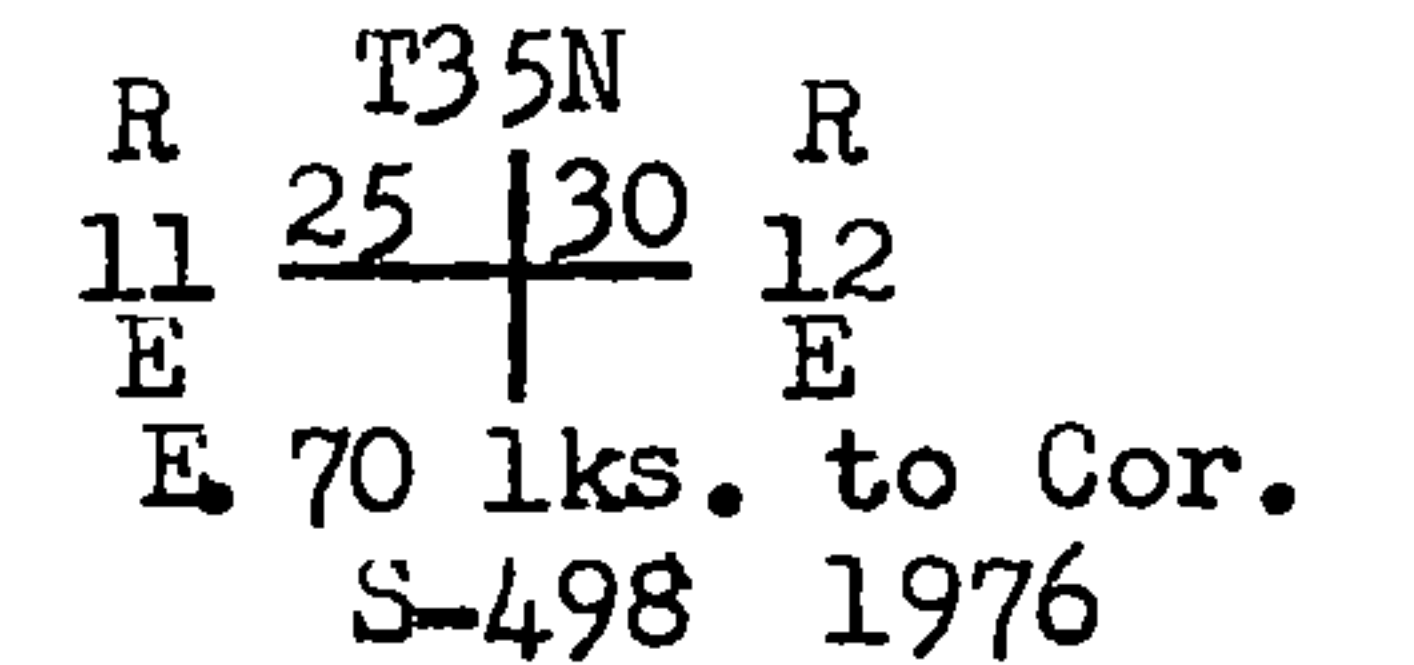
Monument projects 12" above ground. Cap stamped:

Left Lawrence's W.C. in place, painted it blue.

NBT - Sugar 8" S 56° W 55.7 links, scribed 1/4 BT.

Sugar 8" N 78° W 93.3 links, scribed 1/4 BT.

Measurements to BTs are from true corner.



Dated at Rhineland, Wis., this 23rd day of November, 1976

Signature Philip T. Hansen Title Registered Land Surveyor Registration No. S-498
(County Surveyor, Registered Land Surveyor, or other duly authorized official)

Office of Register of Deeds, County of Forest, I hereby certify that the within instrument was filed in this office for record on the 2ND day of December, 1976 at 3:00 o'clock P. M.

Eugene Staszny
(Register of Deeds)

By _____ Deputy

DOCUMENT NUMBER

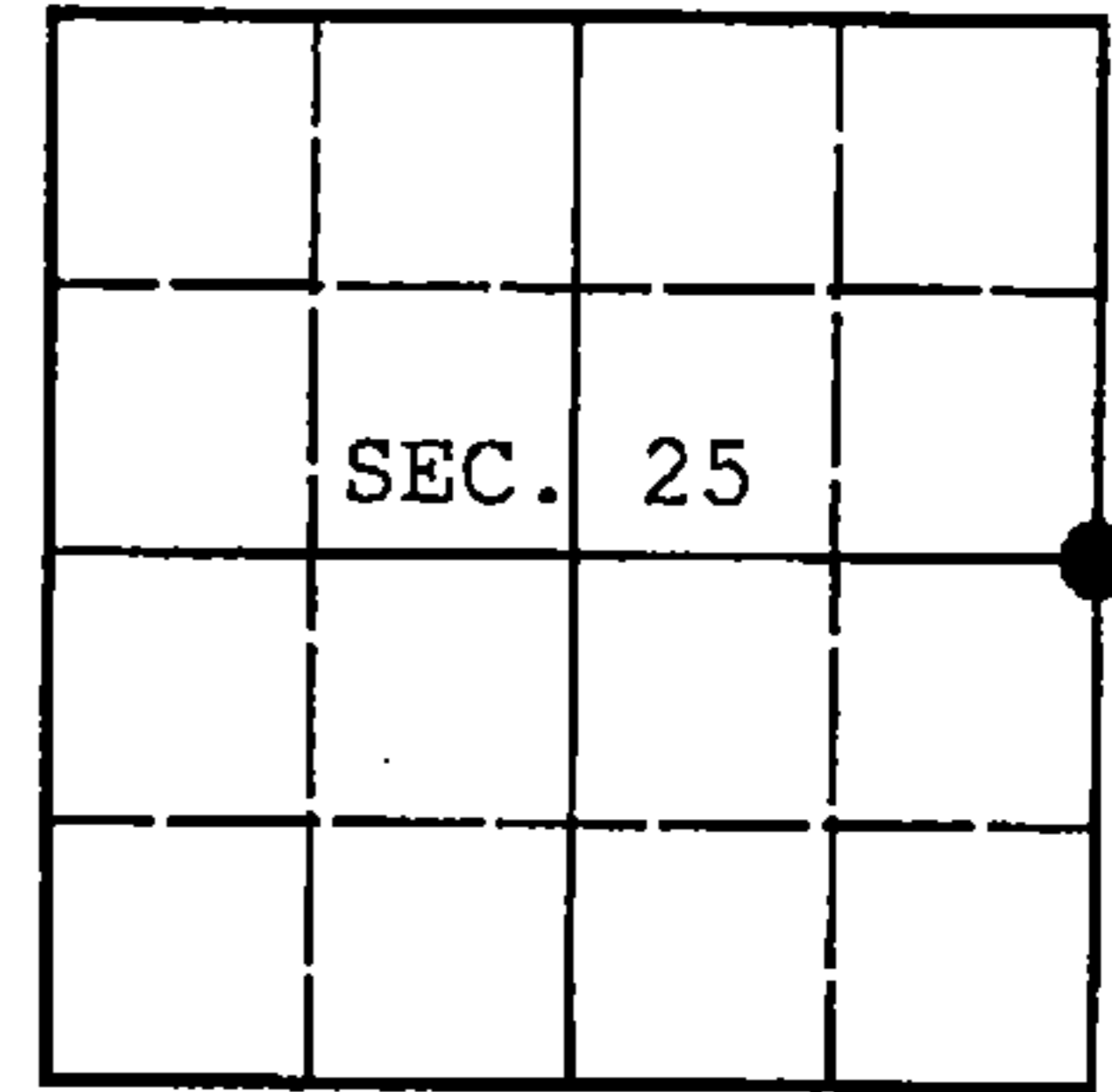
110658

43511252000

U.S. PUBLIC LAND SURVEY MONUMENT RECORD

Note: This form is intended and designed to fulfill all requirements of Wisconsin Administrative Code, Chapter A-E 7.08 U.S. Public Land Survey Monument Record (3) (a) (b) (c) (d) (e) (f) (g) (h) (i). An additional sheet may be added if necessary to conform with said requirements.

(a) CORNER LOCATION: WISCORS - Oneida County
 1/4 Cor. of Secs. 25 & 30 N: 109,815.85 USft
 Township 35 North E: 357,731.76 USft
 Range 11&12 East of the 4th P.M. Datum: NAD 1983(2011)
 Town of Schoepke County of Oneida



(b) HISTORY OF ORIGINAL CORNER ESTABLISHMENT

Original Surveyor: Alfred Millard Original Accessories:
 Date of Survey: Commenced: May, 1858 elm 12" N58°E, 17 lks.
 Completed: June, 1858 aspen 15" N78°W, 35 lks.

(b) (f) (g) (h) Description of monument found at this corner and if it was accepted, state all evidence (material, testimonial, occupational, plats, records, other monuments) used as a basis for accepting. If not accepted or if nothing was found, state evidence used as basis for establishing location. If re-established through lost corner proportionate methods, indicate all monuments, distances and directions used to establish. Indicate type of monument and sign post found or set.

NOTE: This is a perpetuation of a previous USPLS Monument Record by Philip T. Hansen, RLS dated November 23, 1976 and filed in the office of the Oneida County Register of Deeds. A complete history of the corner can be found on the previous monument record. I accept the previous location as a true and faithful perpetuation or reestablishment of the original corner location and further perpetuate it as follows.

May 21, 2016: I found and accepted the record monument, a 1.25" diam. iron pipe 8" beneath the gravel road centerline. I found or established accessories as shown below.

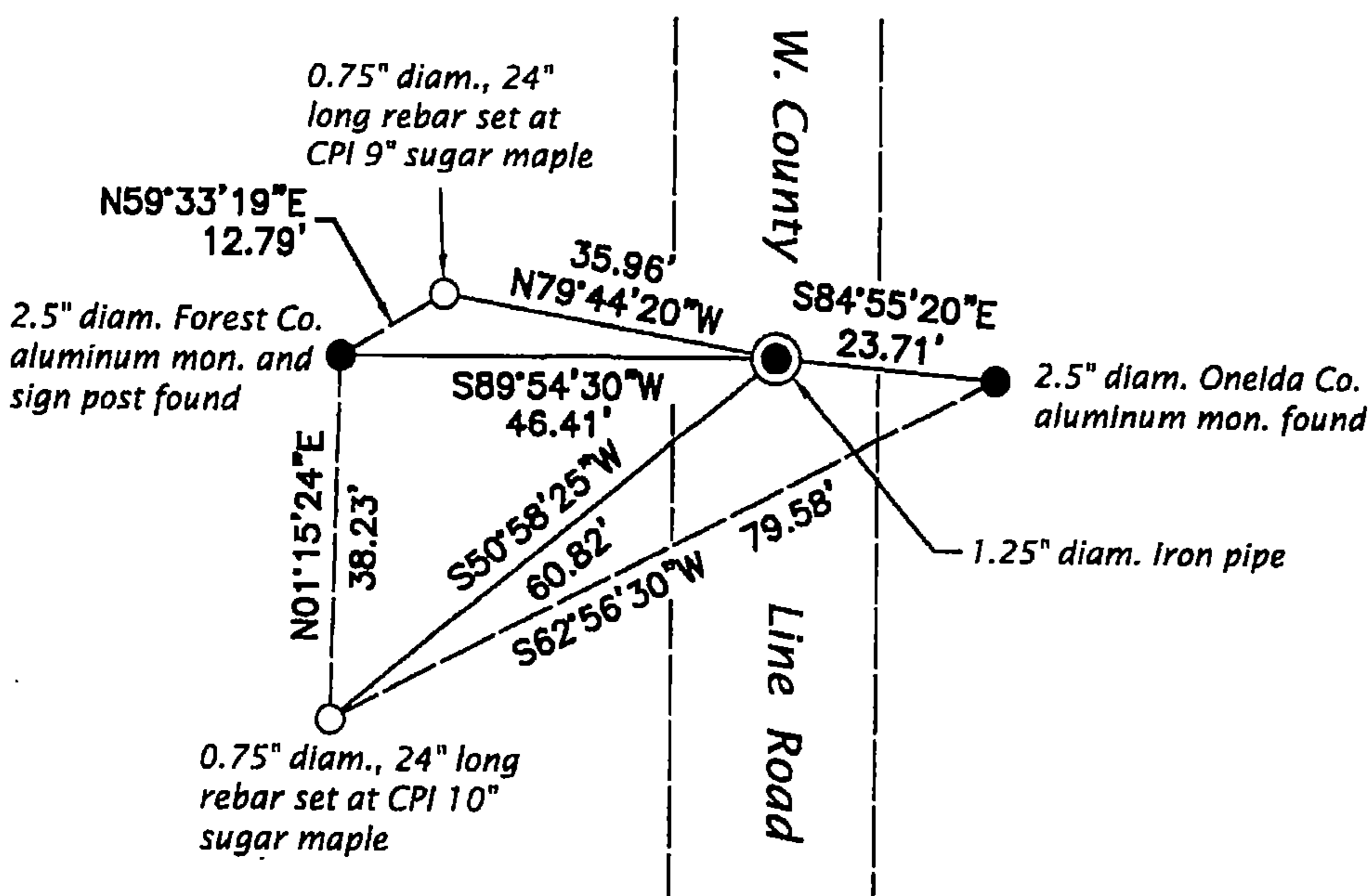
The coordinates shown were derived from two independent RTK observations of the corner point and are referenced to the WISCORS GNSS Network.

FOREST COUNTY, WI
 CORTNEY BRITTEN CLÉEREMAN
 REGISTER OF DEEDS
 RECEIVED FOR RECORD

MAY 31 2018

Time: 10:00 A.M.
 Vol.: Corner Restoration
 Page Number: 7-1

(c) (d) (e) Plan view of corner with ties to at least 4 witness monuments. If in disagreement with previously established corner, show the distances between the two corners and also indicate the ties to the disputed.

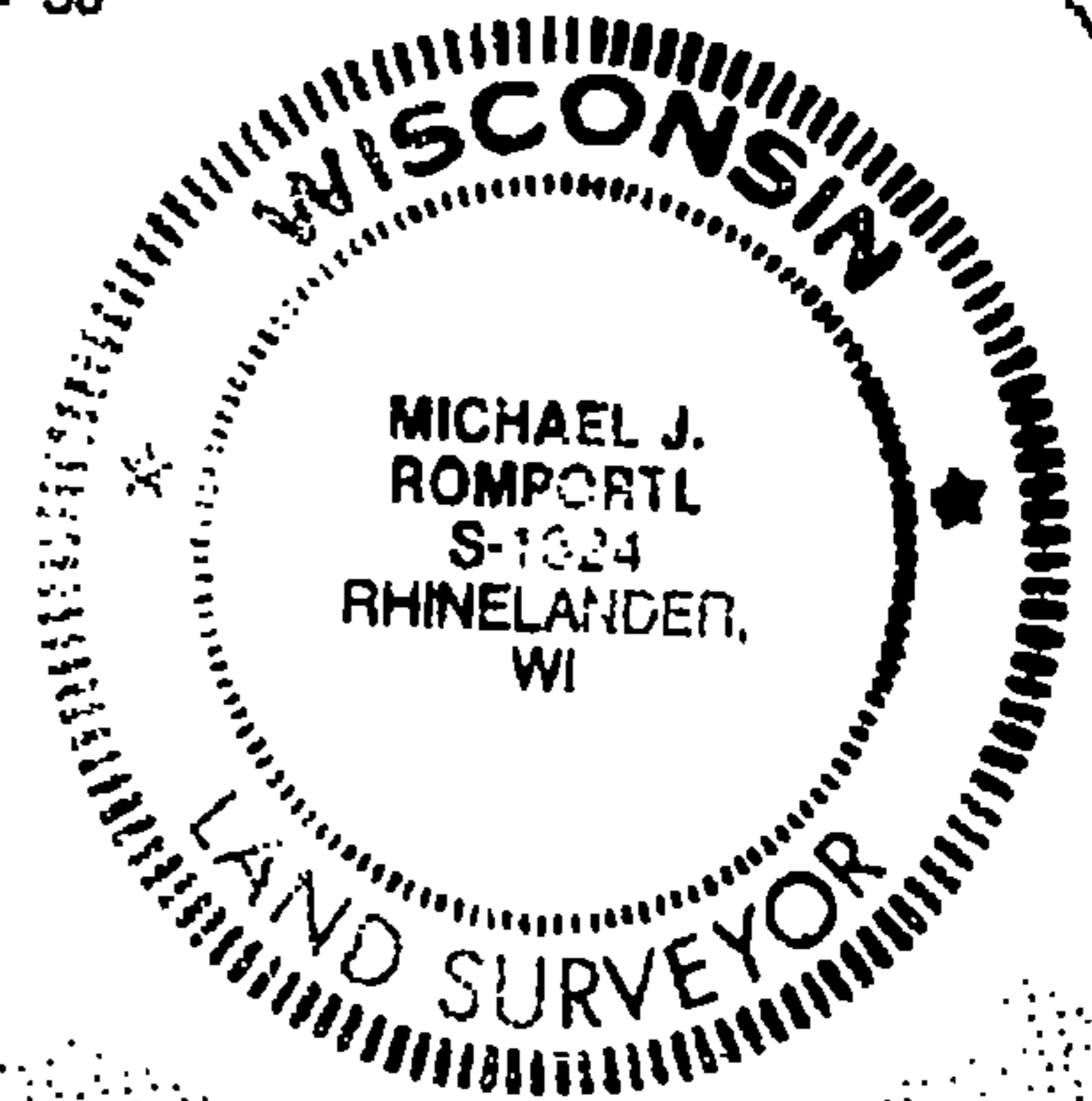


REGISTER OF DEEDS OFFICE
 ONEIDA COUNTY
 FILED

DEC 28 2016

AT _____ O'CLOCK _____ M
 KYLE J. FRANSON
 REGISTER OF DEEDS

ONEIDA CO. GRID
 1" = 30'



(i) I, Michael J. Romportl, Professional Land Surveyor No. S-1624, hereby certify that the corner location on this record was determined by me or under my direction and control and that this U.S. Public Land Survey Monument Record is correct and complete to the best of my knowledge and belief.

Michael J. Romportl 12/3/2016
 Signature Date