

State of Wisconsin }  
County of Oneida } ss.

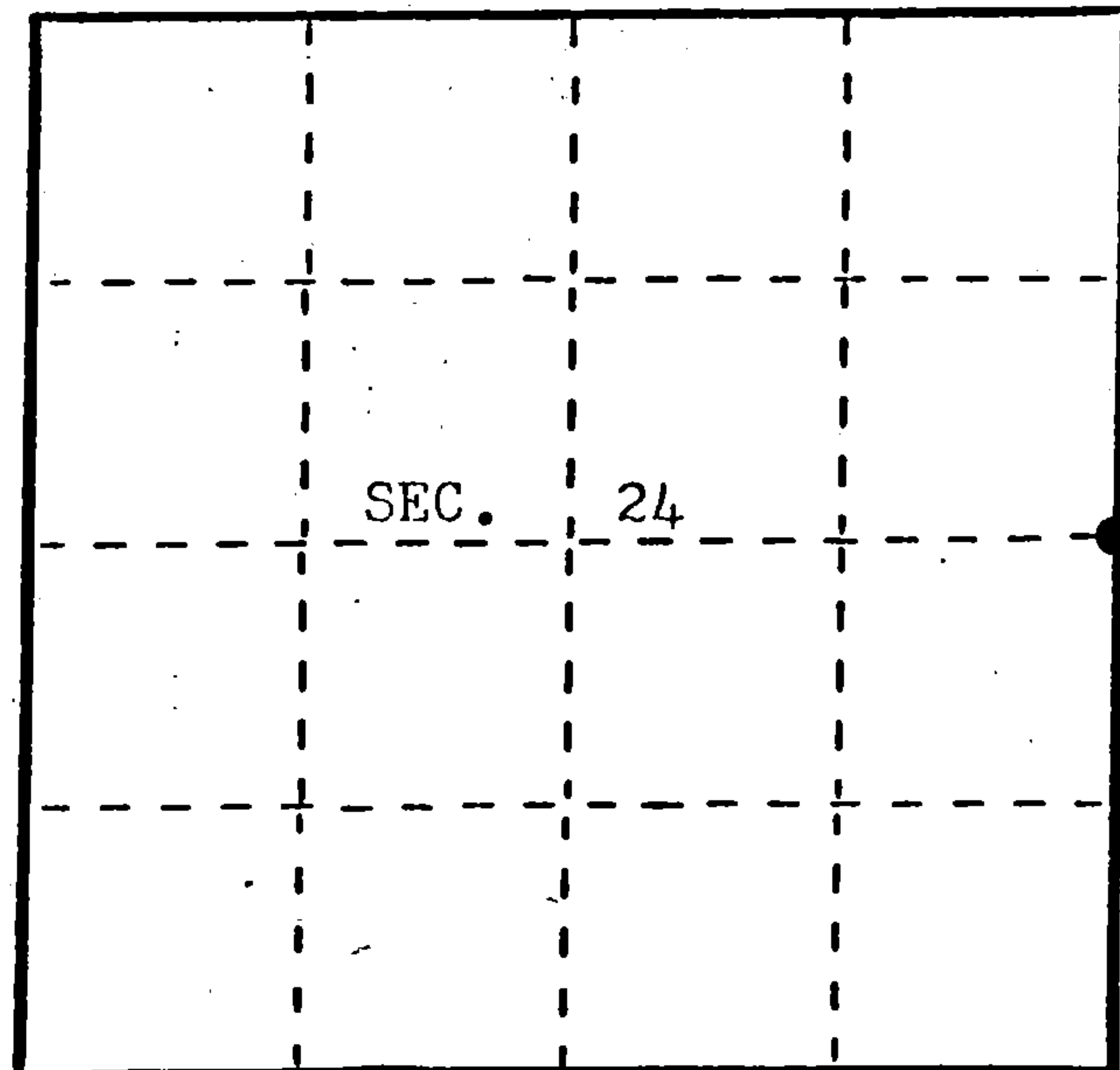
U. S. Public Land Survey Monument Record

Index No. P-1

I, James L. Will, do hereby certify that on the 15th day of October, 1985, I found evidence of the East one-quarter corner of Section 24 Township 35, North, Range 11 East, Fourth Principal Meridian, as described hereon; and that from this evidence I established a new monument and accessories as described hereon to perpetuate the original location of this corner.

Resident witnesses:

Michael E. Weber



● = Corner monument restored.

History of original corner establishment:

Original corner was established during the course of the Range Line of T 35 N, R 11 & 12 E, which was established in 1858, by Alfred Millard, Deputy Surveyor.

Original B.T.'s:

12" Y. Birch N 30° E 26 lks.  
10" Y. Birch S 32° W 27 lks.

Description of corner evidence found:

None.

Description of monument and accessories I established to perpetuate the original location of this corner.

Set 1" iron pipe on Range Line 4' east of centerline of Co. Hwy. "M".

Set Mag. Aluminum capped witness mon. on the E-W 1/4 line N 84°-50'-11" W 33.00'

Set 3-1" iron pipe references to the corner:

S 84°-50'-11" E 37.81'  
N 41°-37'-40" W 51.38'  
S 41°-37'-40" E 41.93'

Blazed and scribed the following new bearing trees:

12" Oak S 55°W 63.25' 9" Oak N79°W 64.50' (Measurements are to a nail in side of the trees.)  
Dated at Eagle River, Wis., this 23rd day of October, 1985.

Signature James L. Will Title Registered Land Surveyor Registration No. S-1410  
(County Surveyor, Registered Land Surveyor, or other duly authorized official)

Office of Register of Deeds, County of Oneida, I hereby certify that the within instrument was filed in this office for record on the 9 day of June, 1986 at 11:00 o'clock A. M.

Doris Verage Kuehn  
(Register of Deeds)

By Cynthia A. Pitts Deputy

43511242000

Describe any material discrepancy between the location of the corner as restored or reestablished and the location of that corner as previously restored or reestablished by distance and direction. Show the discrepancy on the plan view drawing under (d), above. Show the distances between the corner as previously restored or reestablished and (1) the corner as restored or reestablished, and (2) to at least 2 of the witness monuments shown on the drawing in (d), above.

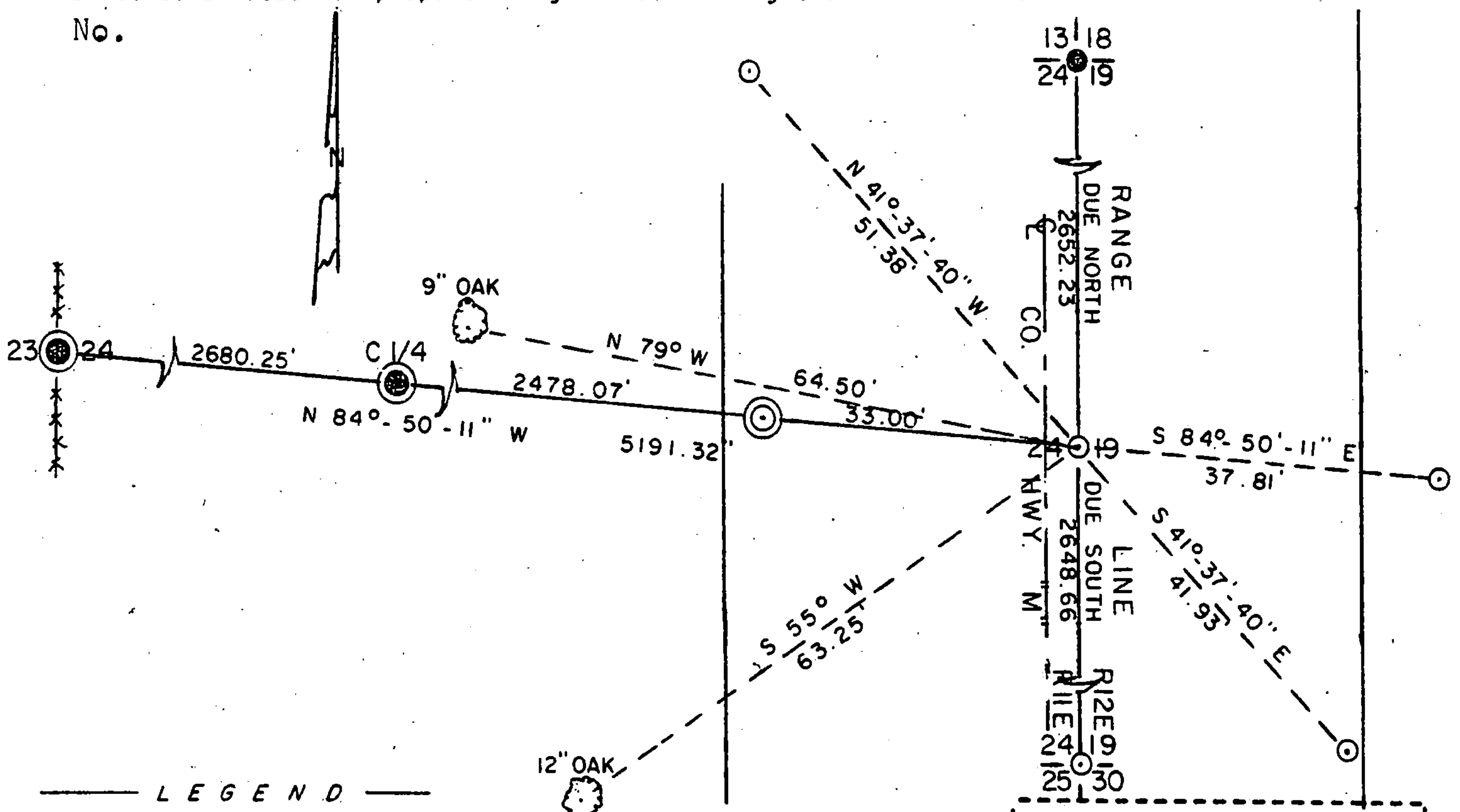
No. See sketch below.

Was the corner restored through acceptance of (1) an obliterated evidence location, or, (2) a found perpetuated location?

Corner was restored by intersection of the Range Line and the East-West 1/4 line using the West and Center 1/4 corners from previous surveys.

Was the corner reestablished through lost corner proportionate methods? If so, show the method, including the directions and distances to other public land survey corners used as evidence or used for proportioning in determining the corner location?

No.



LEGEND

SCALE: 1" = 20'

- ⊙ MAGNETIC ALUM. CAPPED MON. FOUND IN PLACE
- RAILROAD SPIKE FOUND IN PLACE
- ⊙ MAGNETIC ALUM. CAPPED MON. SET
- 1" IRON PIPE SET
- \*\*\* FENCELINE

I, James L. Will, R.L.S. #1410

(type or print name) certify that the corner location shown on this record was determined by me or under my direction and control and that this U.S. Public Land Survey Monument Record is correct and complete to the best of my knowledge and belief.

*James L. Will*  
Signature

October 23, 1985  
Date

