

CERTIFIED LAND CORNER RESTORATION

State of Wisconsin

County of Forest

ss.

I, Jean F. Resvick, do hereby certify that on the 9th day of July, 1973, I found evidence of the Southeast Section corner of Section 33 Township 34N, Range 16E, Fourth Principal Meridian, as described hereon; and that from this evidence I established a new monument and accessories as described hereon to perpetuate the original location of this corner:

Description of original monument and accessories and subsequent restorations:

Survey in 1857 by Artemas Curtis 80.00 chains west between sections 3 and 34 set post Cedar 14 inches, bears N17°E 9 lks. Y. Birch 12 inches, bears S21°E 21 lks. Cedar 14 inches, bears S19°W 28 lks. Cedar 14 inches, bears N53°W 23 lks.

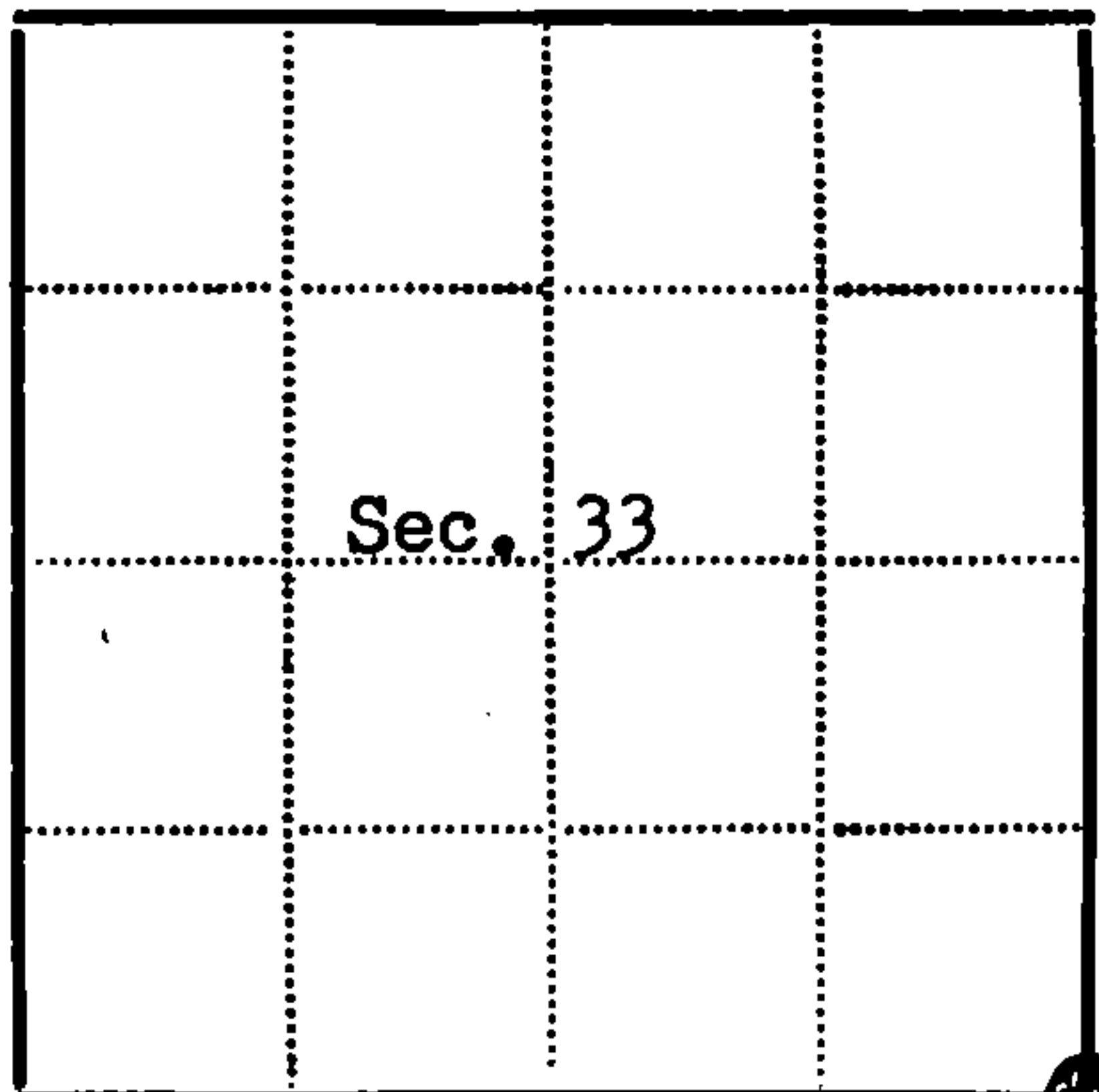
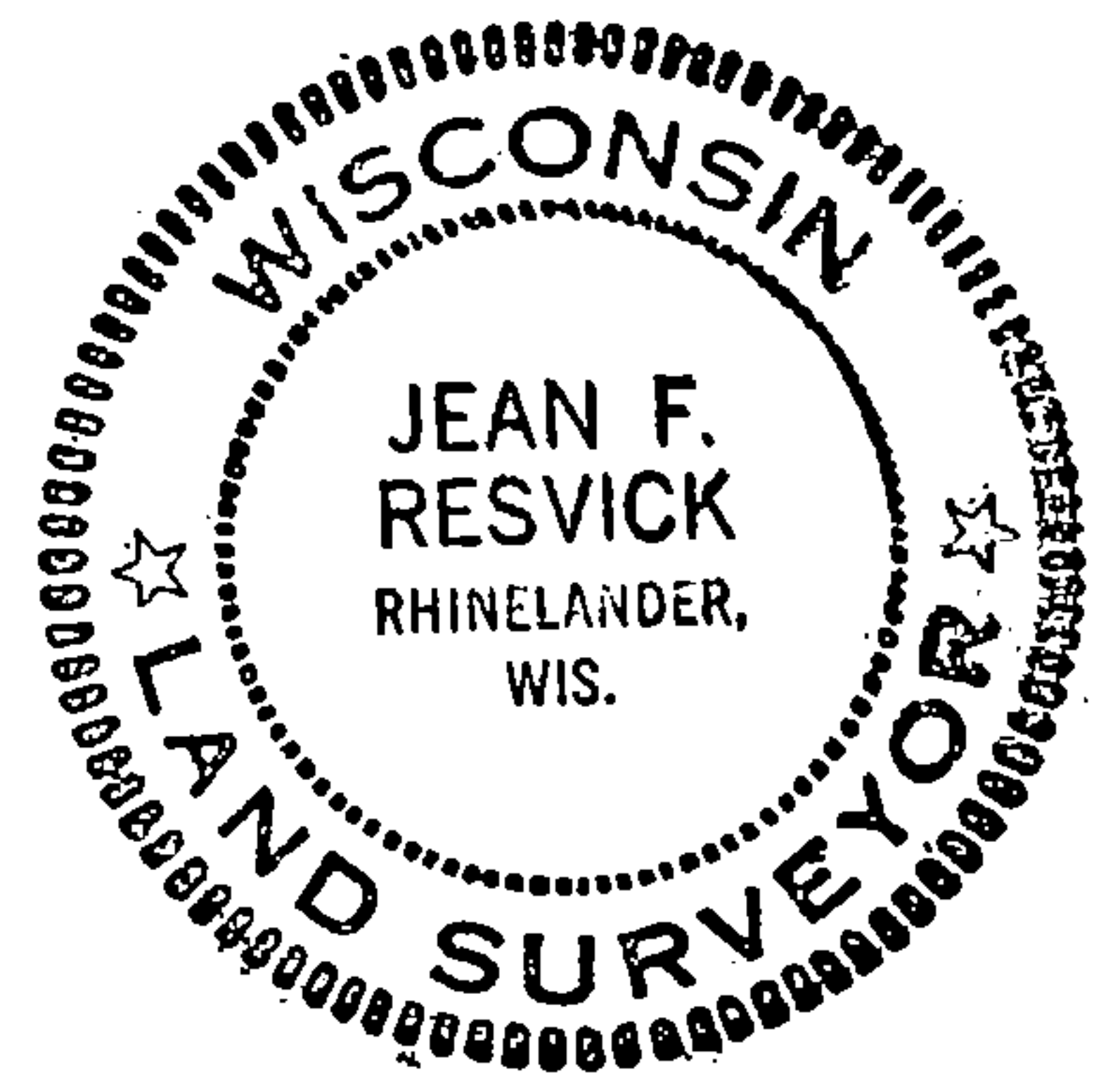
Description of corner evidence found:

- 1. wood post point
2. Cedar fallen bears N14E 9 lks.
3. Y. Birch stump bears S18E 21 lks.
4. Cedar stump bears S22W 28 lks.
5. Cedar stump bears N50W 23 lks.
6. Y. Birch 8 inches, bears N17E, 4.98 ft.
7. Cedar 10 inches bears S71W, 14.18 ft.

Description of monument and accessories I established to perpetuate the location of this corner:

Replaced wood post point with a 2 inch inside diameter galvanized pipe 5 feet long filled with concrete with a brass cap marked T34N, R16E, S33, S34, S4, S3, T33N, 1974, S-802

From which the following new bearing trees bear Elm 6 inches, bears S33°E 8.45 ft. Hemlock 7 inches, bears N70°W 22.34 ft. Steel sign post SE, 0.5 ft.



Legend: Circle with dot = Corner monument restored; Square =

Resident witnesses

Dated at Rhinelander Wisconsin, this 28 day of Feb. 1974.

Signature: Jean F. Resvick, Title: Land Surveyor (County Surveyor, Registered Land Surveyor, or other duly authorized official)

Surveyors Registration No. S-802, DOCUMENT Number 105094

Office of Register of Deeds, County of Forest

I hereby certify that the within instrument was filed in this office for record on the 5th day of April 1974, and was filed in Book No. Page No. of County Records.

Signature: Eugene Stagny, Title: Register of Deeds

Township 34N, Range 16E, Section 33, Index No. Z-13, Page No.

4341033 0000

213

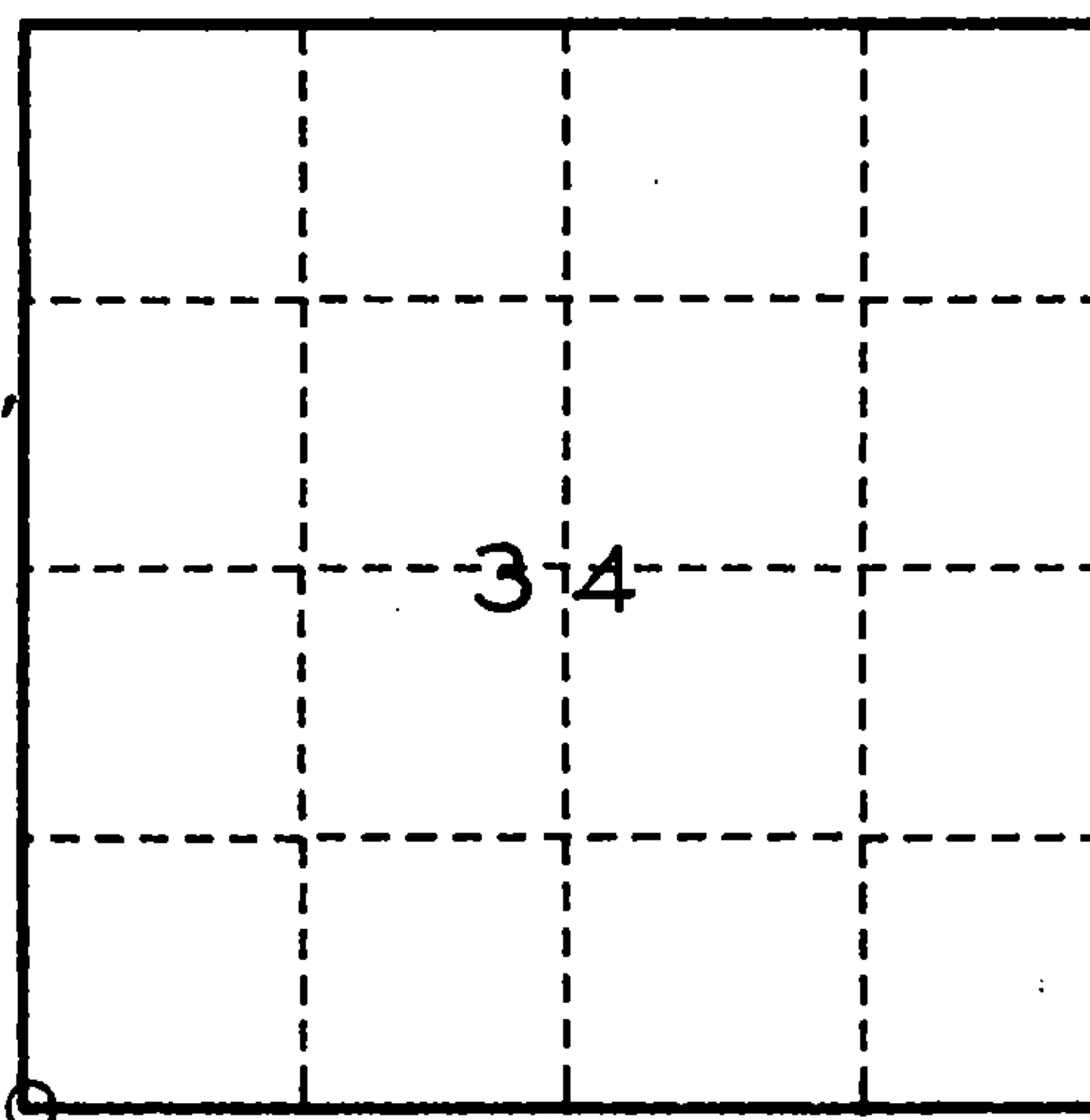
U. S. PUBLIC LAND SURVEY MONUMENT RECORD

INSTRUCTIONS:

This record shall show the location of the corner and shall include all of the following nine elements (a through i).

- (a) Identify the corner by reference to the U.S. public land survey system.
- = Corner monument restored.

SOUTHWEST CORNER OF SECTION 34, TWP.34 N., R. 16 E.



- (b) Describe any record evidence, monument evidence, occupational evidence, testimonial evidence or any other material evidence you considered, and whether the monument was found or placed.

1857 - ORIGINAL SURVEY BY CURTIS, SET SECTION CORNER, B.Ts - Y. BIRCH 12" S.21° E. 21 LKS., CEDAR 14" N.17° E. 9 LKS., CEDAR 14" S.19° W. 28 LKS., CEDAR 14" N.53° W. 23 LKS.

1974 - RESVICK, R.L.S. NO. S-802, SET SECTION CORNER - 2" DIA. IRON PIPE WITH BRASS CAP, B.Ts - YELLOW BIRCH 8" N.17° E. 4.98FT., CEDAR 10" S.71° W. 14.18FT., ELM 6" S.33° E. 8.45FT., HEMLOCK 7" N.70° W. 22.34FT., WITNESS- STEEL SIGN POST SE 0.50FT.

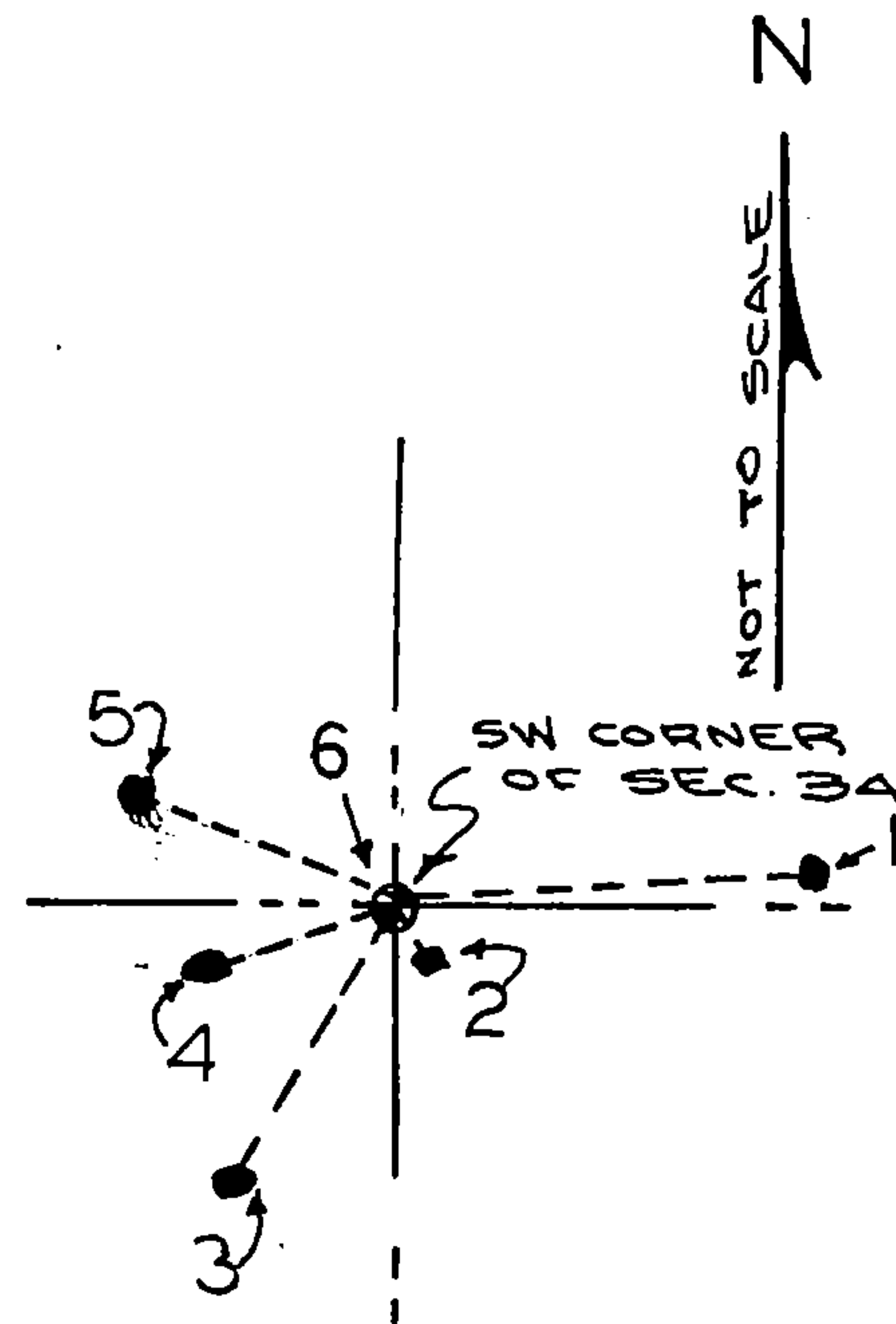
1993 - DOBRATZ, R.L.S. NO. S-973, FOUND MONUMENT, SIGN POST AND 2 OF THE ABOVE B.Ts STILL ALIVE - CEDAR 12" S.71° W. 14.18FT. AND HEMLOCK 8" N.70° W. 22.34FT., OTHERS ARE DEAD OR DOWN.

- (c) In the plan view drawing below, provide reference ties to at least 4 witness monuments, or, if the location is within a municipality, to at least 2 witness monuments. (witness monuments shall be made of concrete, natural stone, iron or other equally durable material.)

- (d) Show a plan view drawing depicting the relevant monuments and reference ties which is sufficient in detail to enable accurate relocation of the corner monument if the corner monument is disturbed. Indicate north.

WITNESS

1. B.T. HEMLOCK 12" N.87° E. 30.80FT. (NEW)
2. STEEL SIGN POST SE 0.50FT. (NEW)
3. B.T. ASH 9" S.32° W. 25.23FT. (NEW)
4. B.T. CEDAR 12" S.71° W. 14.18FT. (EXISTING)
5. B.T. HEMLOCK 8" N.70° W. 22.34FT. (EXISTING)
6. 2" DIA. IRON PIPE WITH BRASS CAP AT SECTION CORNER (EXISTING)

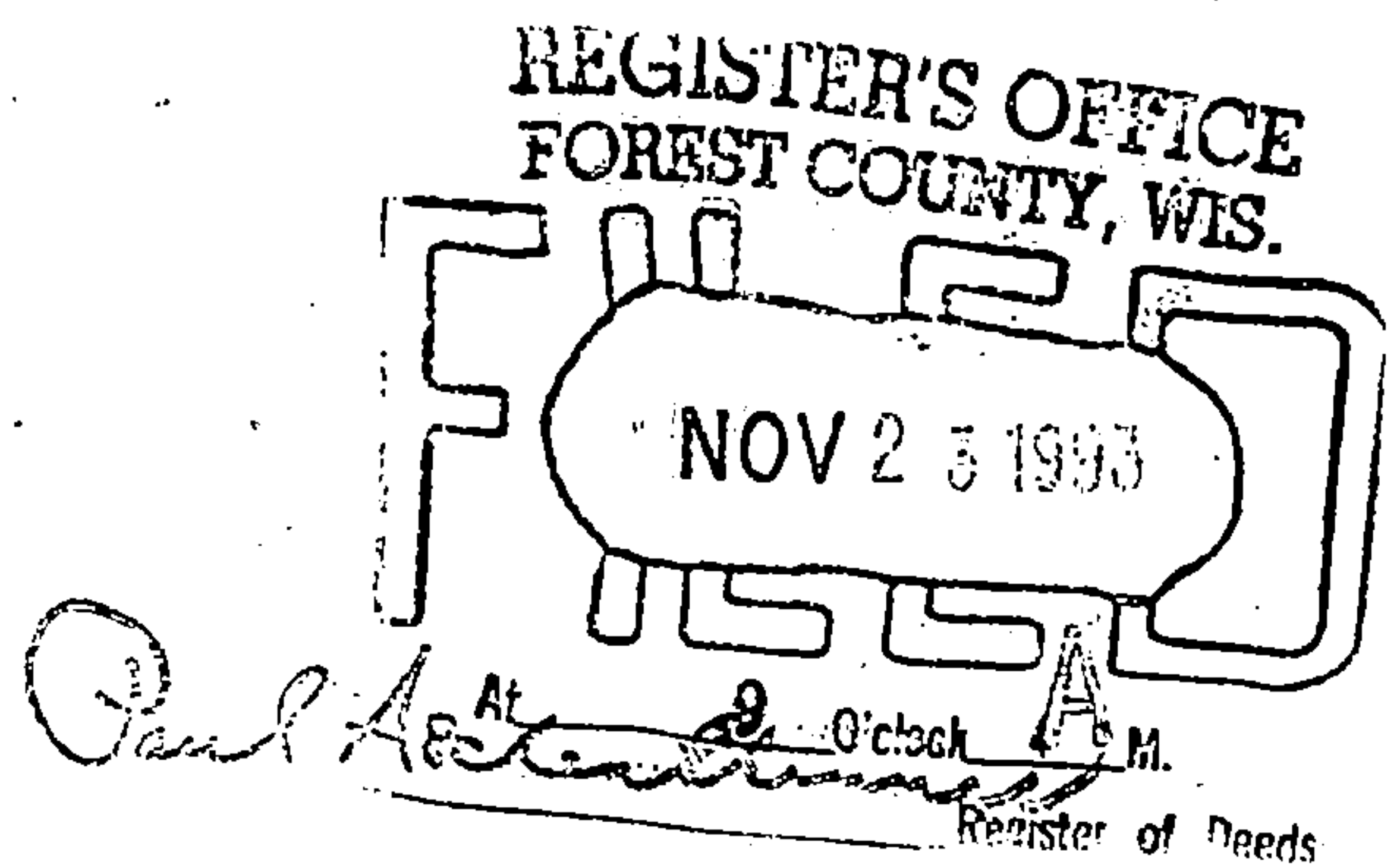


(e) Describe any material discrepancy between the location of the corner as restored or reestablished and the location of that corner as previously restored or reestablished by distance and direction. Show the discrepancy on the plan view drawing under (d) above. Show the distances between the corner as previously restored or reestablished and (1) the corner as restored or reestablished, and (2) to at least 2 of the witness monuments shown on the drawing in (d), above.

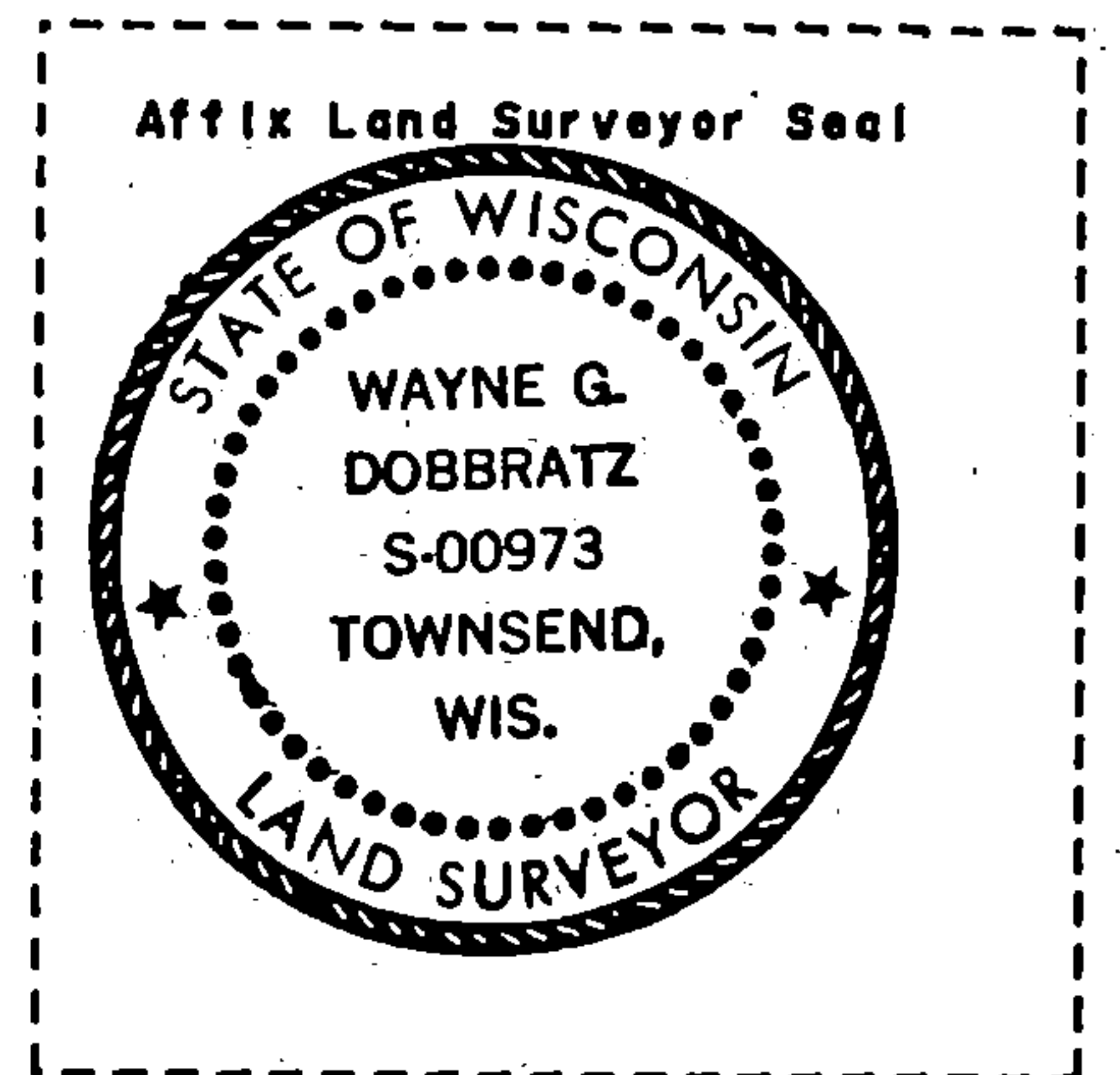
(f) Was the corner restored through acceptance of (1) an obliterated evidence location, or, (2) a found perpetuated location?

(2)

(g & h) Was the corner reestablished through lost corner proportionate methods? If so, show the method, including the directions and distances to other public land survey corners used as evidence or used for proportioning in determining the corner location?



(1) I, WAYNE G. DOBBRATZ
(type or print name) certify that the corner location shown on this record was determined by me or under my direction and control and that this U.S. Public Land Survey Monument Record is correct and complete to the best of my knowledge and belief.



Wayne G. Dobbratz 9/26/93
Signature Date

CERTIFICATE READY FOR FILING: Ralph [unclear] 11-5-93
Acting District Ranger