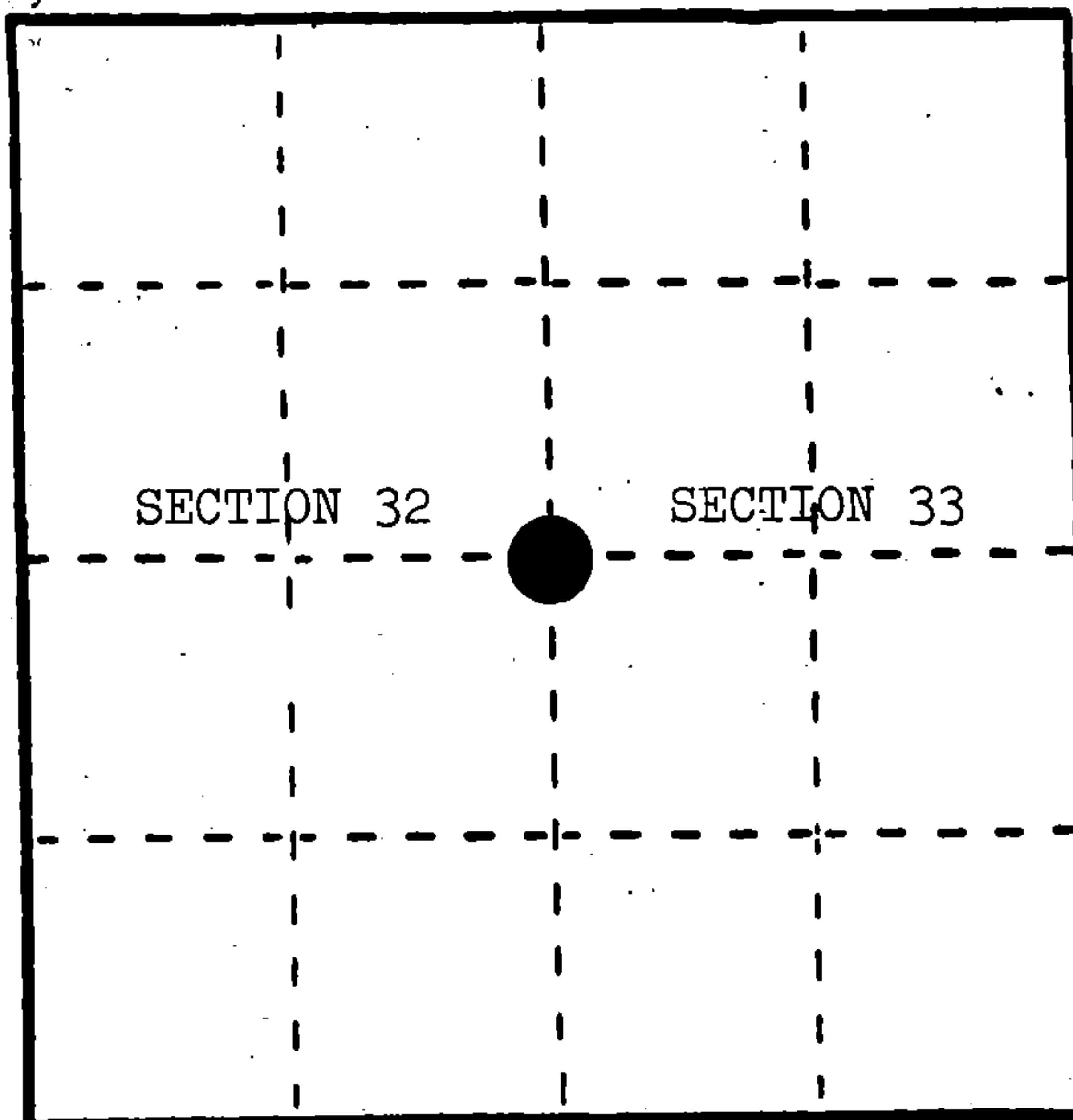


U. S. PUBLIC LAND SURVEY MONUMENT RECORD

INSTRUCTIONS: This record shall show the location of the corner and shall include all of the following nine elements (a through i).

- (a) Identify the corner by reference to the U.S. public land survey system.
 ○ = Corner monument restored.

Quarter corner to Sections 32 and 33, T.34N., R.16E.



- (b) Describe any record evidence, monument evidence, occupational evidence, testimonial evidence or any other material evidence you considered, and whether the monument was found or placed.

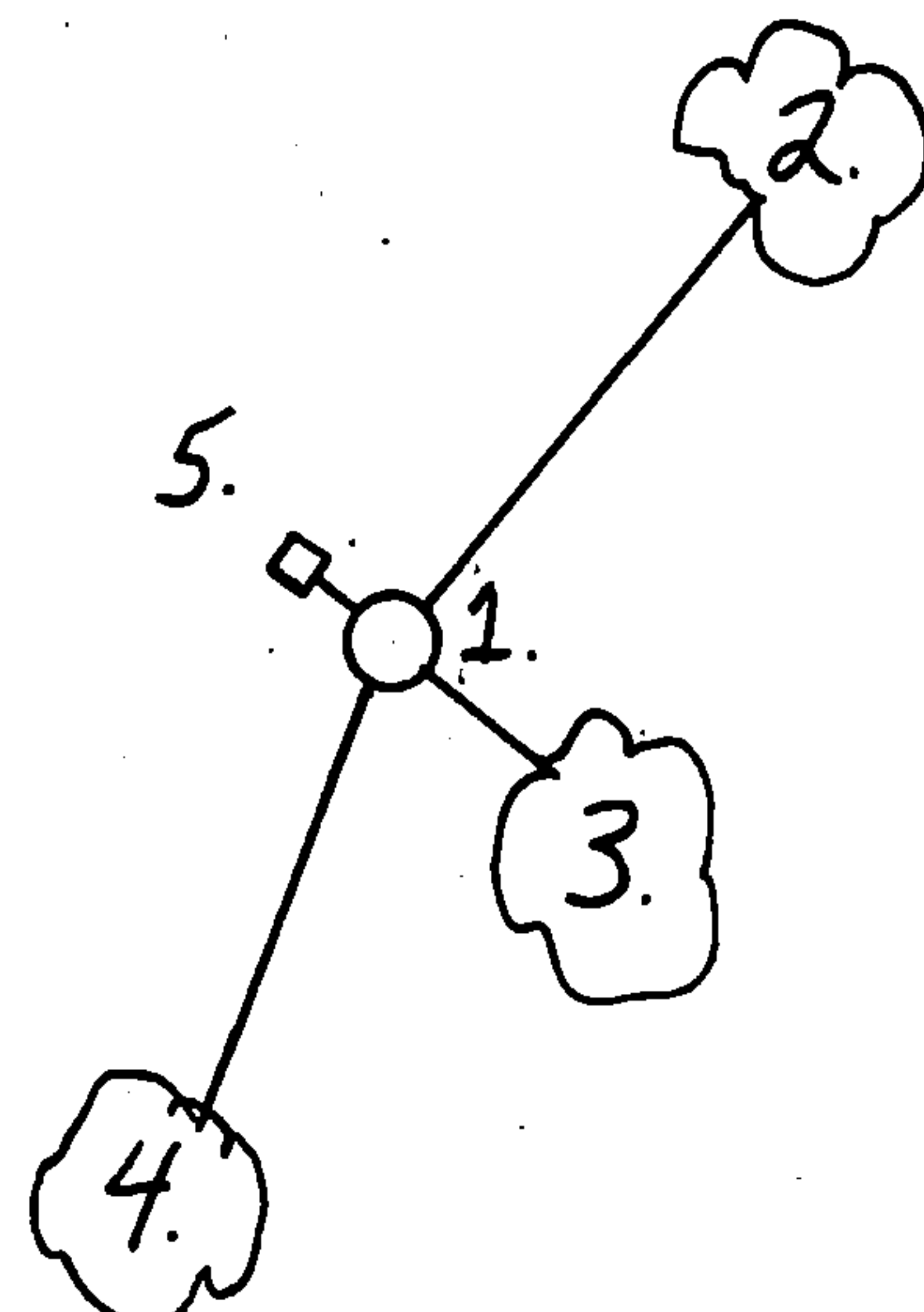
In 1858, James McBride set wood post with the following BTs: Sugar, 8", S.31°E., 18 links; Sugar, 10", S.87°W., 11 links. 4.00 chains north, enter Cedar swamp, bears northwest and southeast.

July 24, 1984, Alan Harrison set proportionate position--searched area, found no evidence of corner location.

- (c) In the plan view drawing below, provide reference ties to at least 4 witness monuments, or, if the location is within a municipality, to at least 2 witness monuments. (Witness monuments shall be made of concrete, natural stone, iron or other equally durable material.)
 Describe witness monuments.

- (d) Show a plan view drawing depicting the relevant monuments and reference ties which is sufficient in detail to enable accurate relocation of the corner monument if the corner monument is disturbed. Indicate north.

1. 2" x 30" aluminum monument stamped to identify the corner; in a mound of stone.
2. Sugar, 6", N.48°E., 16.37'
3. Sugar, 6", S.47°E., 3.58'
4. Sugar, 7", S.28°W., 19.38'
5. Steel Sign Post, Northwest, 1.43'



REGISTER'S OFFICE
 Forest County, Wis.

Received for record this 25th day
 of January, A.D., 1985 at

8:30 o'clock A.M. and

recorded in Vol. CORNER RESTORATIONS

on page X-9
Paul Hechenbrenner
 REGISTER

(e) Describe any material discrepancy between the location of the corner as restored or reestablished and the location of that corner as previously restored or reestablished by distance and direction. Show the discrepancy on the plan view drawing under (d), above. Show the distances between the corner as previously restored or reestablished and (1) the corner as restored or reestablished, and (2) to at least 2 of the witness monuments shown on the drawing in (d), above.

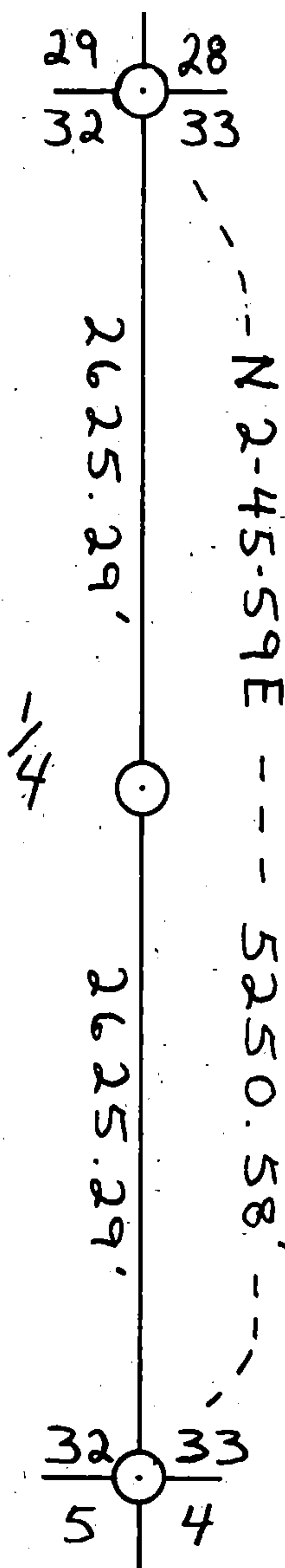
None.

(f) Was the corner restored through acceptance of (1) an obliterated evidence location, or, (2) a found perpetuated location?

Neither.

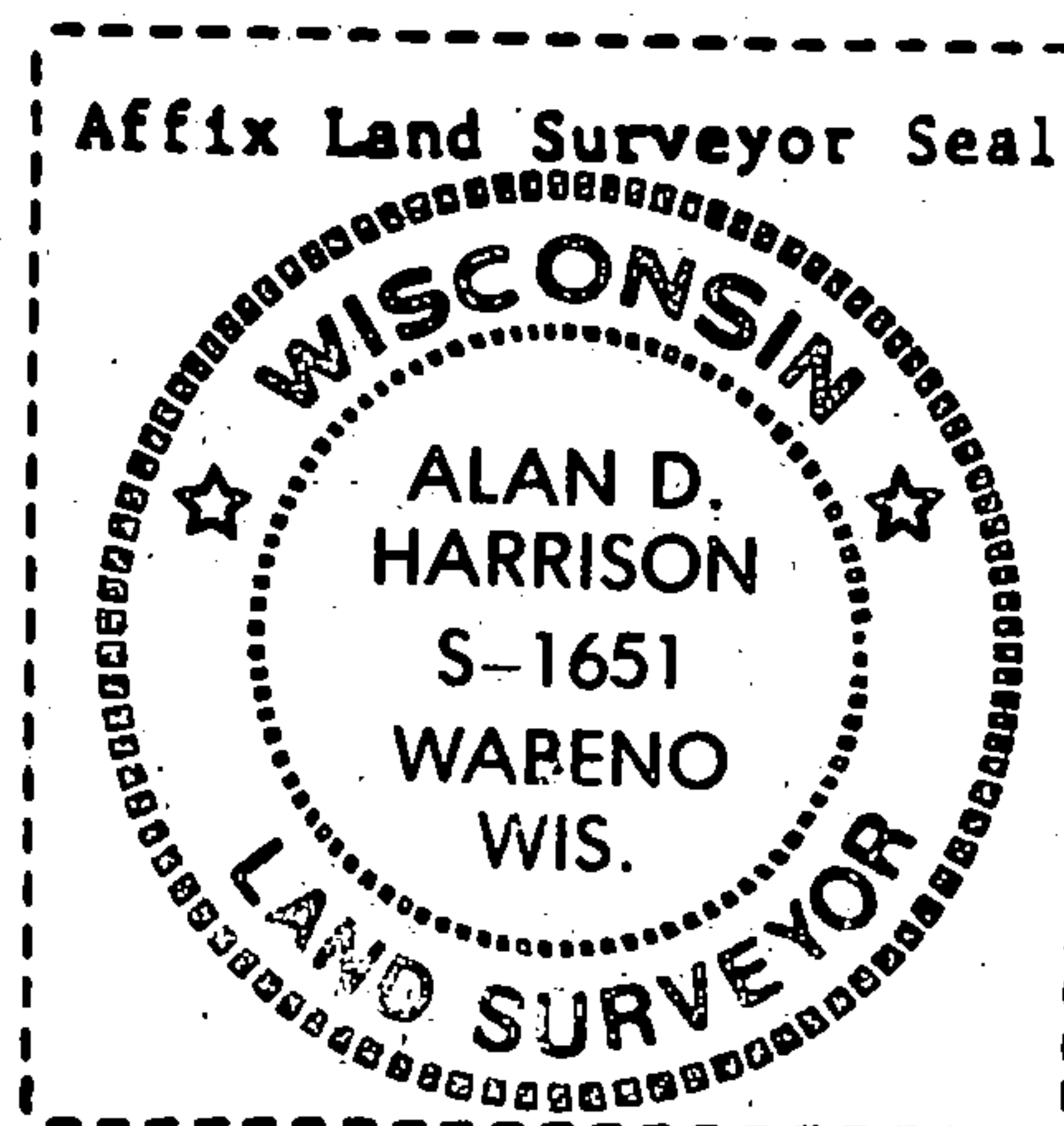
(g&h) Was the corner reestablished through lost corner proportionate methods? If so, show the method, including the directions and distances to other public land survey corners used as evidence or used for proportioning in determining the corner location?

Yes.



(1) I, Alan D. Harrison
(type or print name) certify that the corner location shown
on this record was determined by me or under my direction and
control and that this U.S. Public Land Survey Monument Record is
correct and complete to the best of my knowledge and belief.

Alan D. Harrison 12/10/84
Signature Date



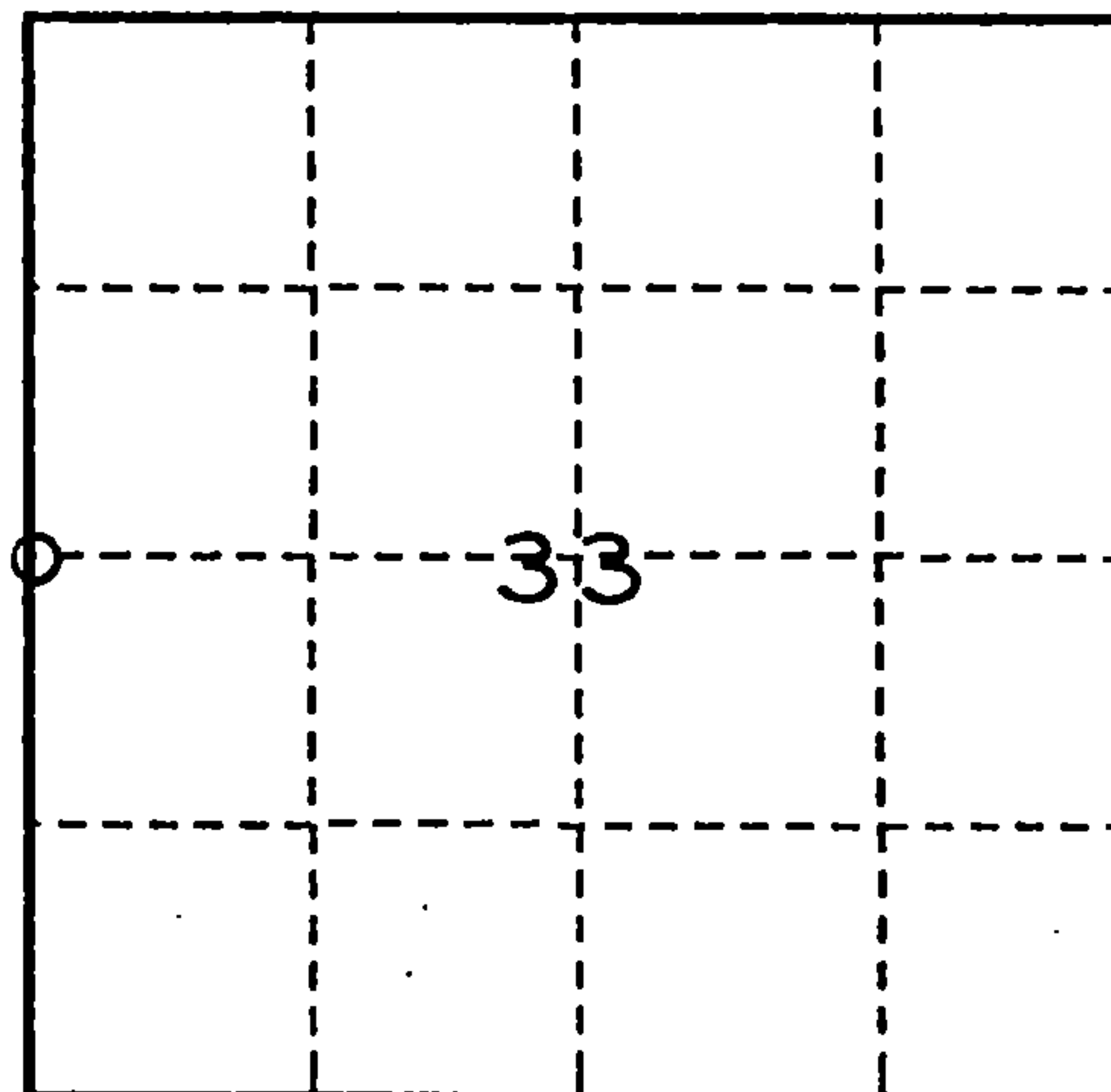
U. S. PUBLIC LAND SURVEY MONUMENT RECORD

INSTRUCTIONS:

This record shall show the location of the corner and shall include all of the following nine elements (a through i).

- (a) Identify the corner by reference to the U.S. public land survey system.
 O = Corner monument restored.

WEST $\frac{1}{4}$ CORNER OF SECTION 33, TWP. 34 N.,
 R. 16 E.



- (b) Describe any record evidence, monument evidence, occupational evidence, testimonial evidence or any other material evidence you considered, and whether the monument was found or placed.

1858 - ORIGINAL SURVEY BY McBRIDE, B.Ts.- SUGAR 8" S.31° E. 18 LKS.,
 SUGAR 10" S.87° W. 11 LKS.

1984 - HARRISON R.L.S. NO. S-1651 SET 2" DIA. ALUMINUM MONUMENT, B.Ts.
 SUGAR 6" N.48° E. 16.37FT., SUGAR 6" S.47° E. 3.58FT., SUGAR 7" S.28° W.
 19.38FT. WITNESS - STEEL SIGN POST NW 1.43FT.

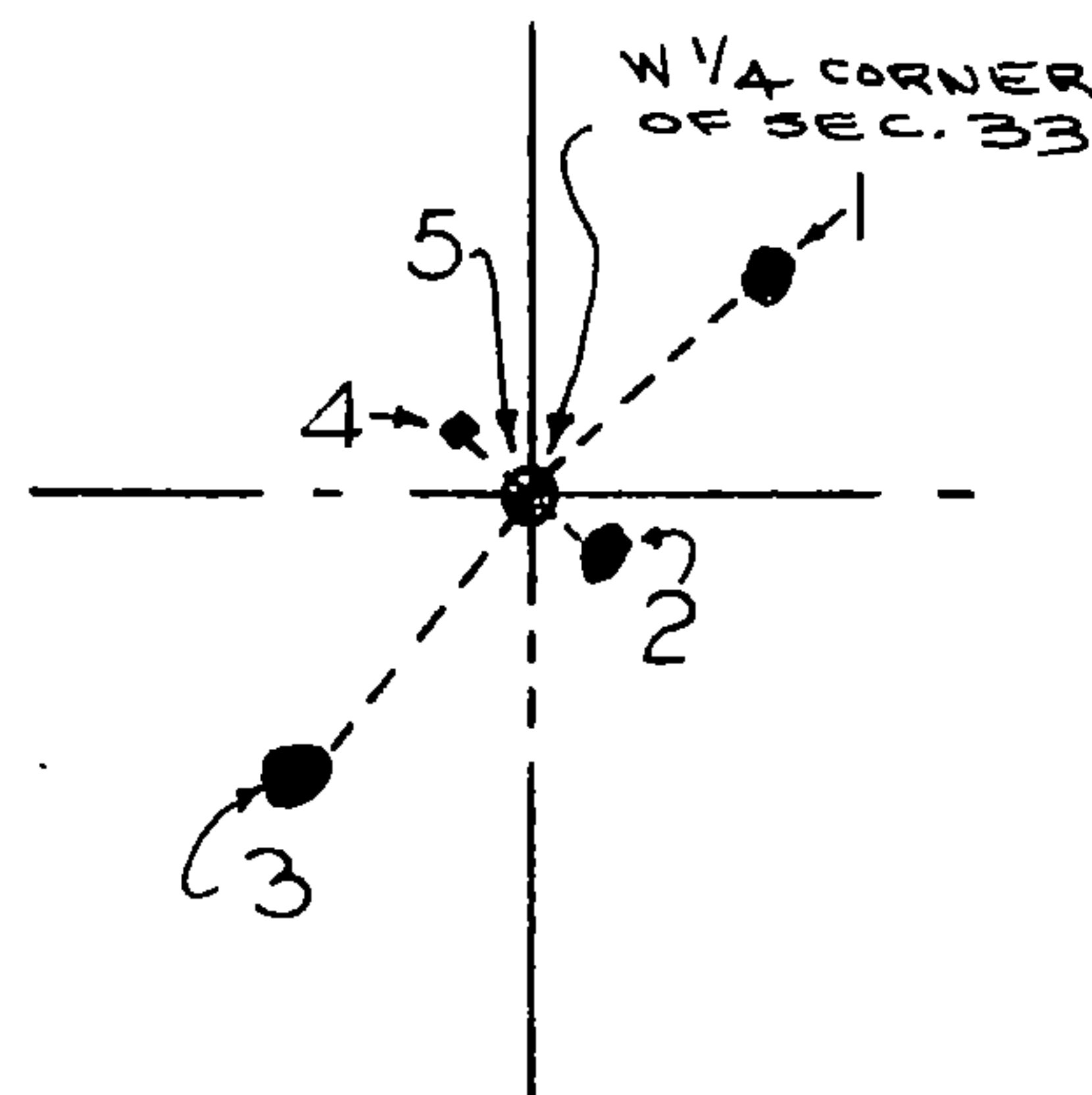
1993 - DOBBRATZ R.L.S. NO. S-973, FOUND MONUMENT, STEEL SIGN POST
 AND B.Ts . B.T. SUGAR 7" S.28° W. 19.38 BEARING IS INCORRECT.

- (c) In the plan view drawing below, provide reference ties to at least 4 witness monuments, or, if the location is within a municipality, to at least 2 witness monuments. (witness monuments shall be made of concrete, natural stone, iron or other equally durable material.)

- (d) Show a plan view drawing depicting the relevant monuments and reference ties which is sufficient in detail to enable accurate relocation of the corner monument if the corner monument is disturbed. Indicate north.

WITNESS

1. B.T. SUGAR 7" N.48° E. 16.37FT. (EXISTING)
2. B.T. SUGAR 7" S.47° E. 3.58FT. (EXISTING)
3. B.T. SUGAR 8" S.42° W. 19.40FT. (EXISTING)
4. STEEL SIGN POST NW 1.43FT. (EXISTING)
5. 2"DIA. ALUMINUM MONUMENT (EXISTING)



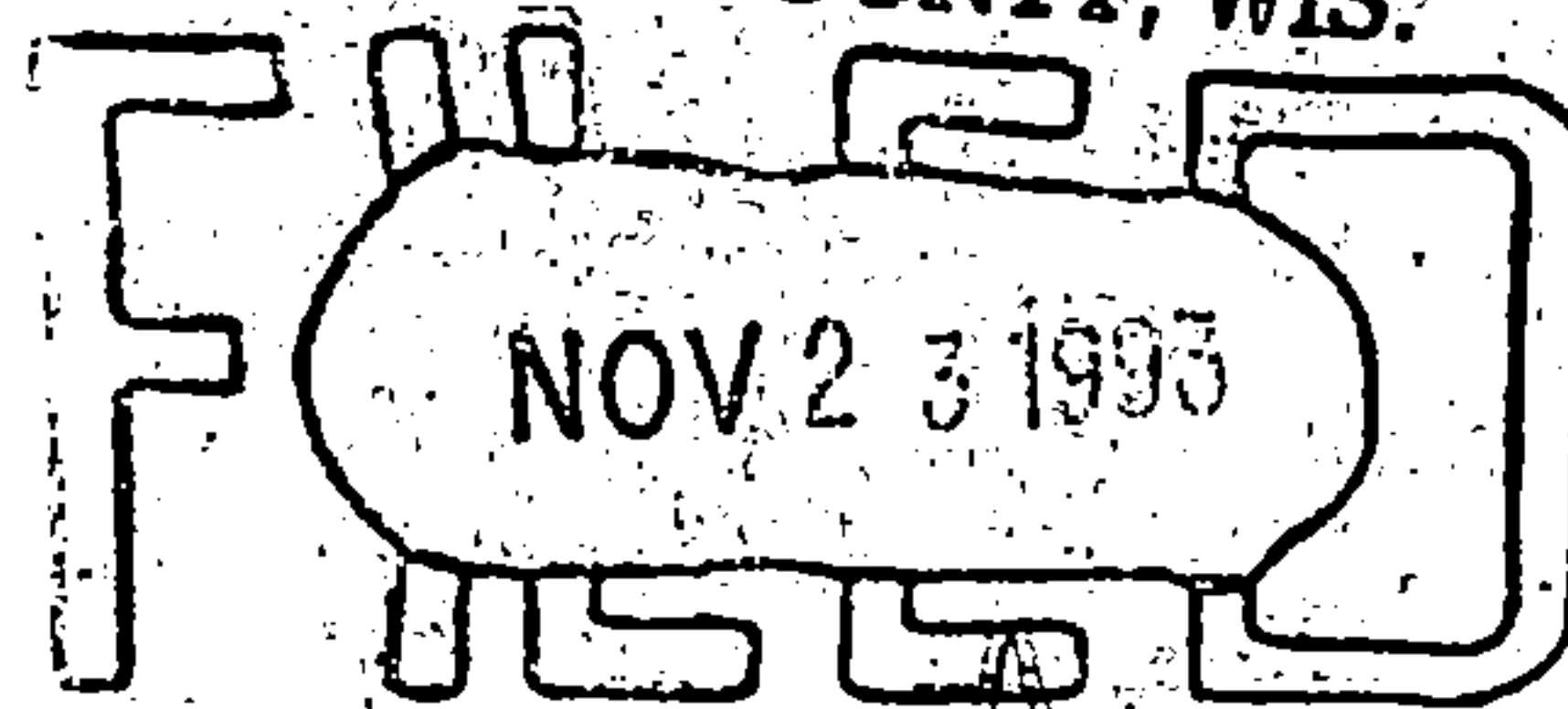
(e) Describe any material discrepancy between the location of the corner as restored or reestablished and the location of that corner as previously restored or reestablished by distance and direction. Show the discrepancy on the plan view drawing under (d), above. Show the distances between the corner as previously restored or reestablished and (1) the corner as restored or reestablished, and (2) to at least 2 of the witness monuments shown on the drawing in (d), above.

(f) Was the corner restored through acceptance of (1) an obliterated evidence location, or, (2) a found perpetuated location?

(2)

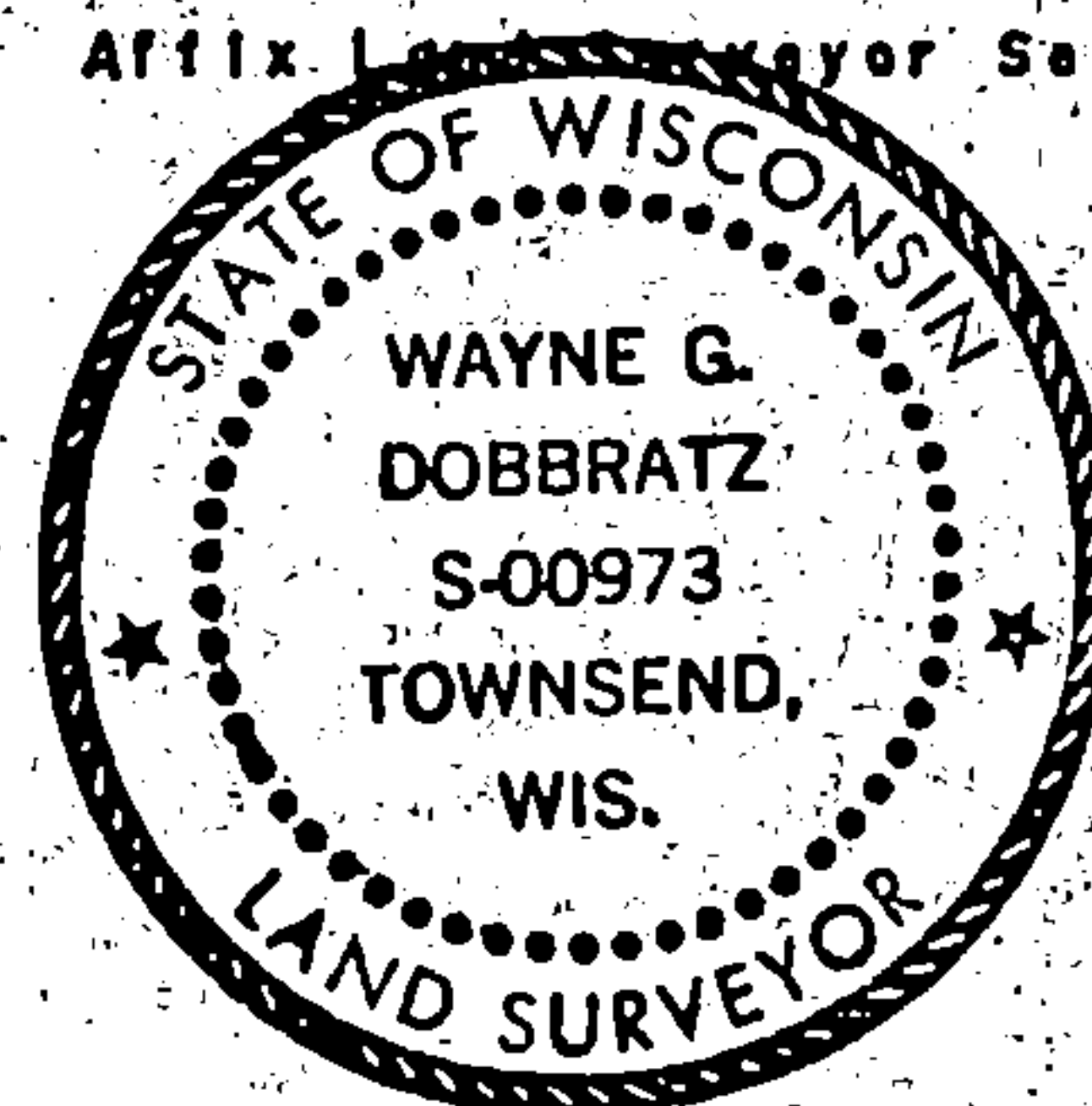
(g & h) Was the corner reestablished through lost corner proportionate methods? If so, show the method, including the directions and distances to other public land survey corners used as evidence or used for proportioning in determining the corner location?

REGISTER'S OFFICE
FOREST COUNTY, WIS.



Paul H. ... 2nd Class M.
Register of Deeds

Affix Land Surveyor Seal.



(1) I, WAYNE G. DOBBRATZ 8/5/93

(type or print name) certify that the corner location shown on this record was determined by me or under my direction and control and that this U.S. Public Land Survey Monument Record is correct and complete to the best of my knowledge and belief.

Signature

Date

CERTIFICATE READY FOR FILING:

Ralph ... 11-5-93
Acting District Ranger