

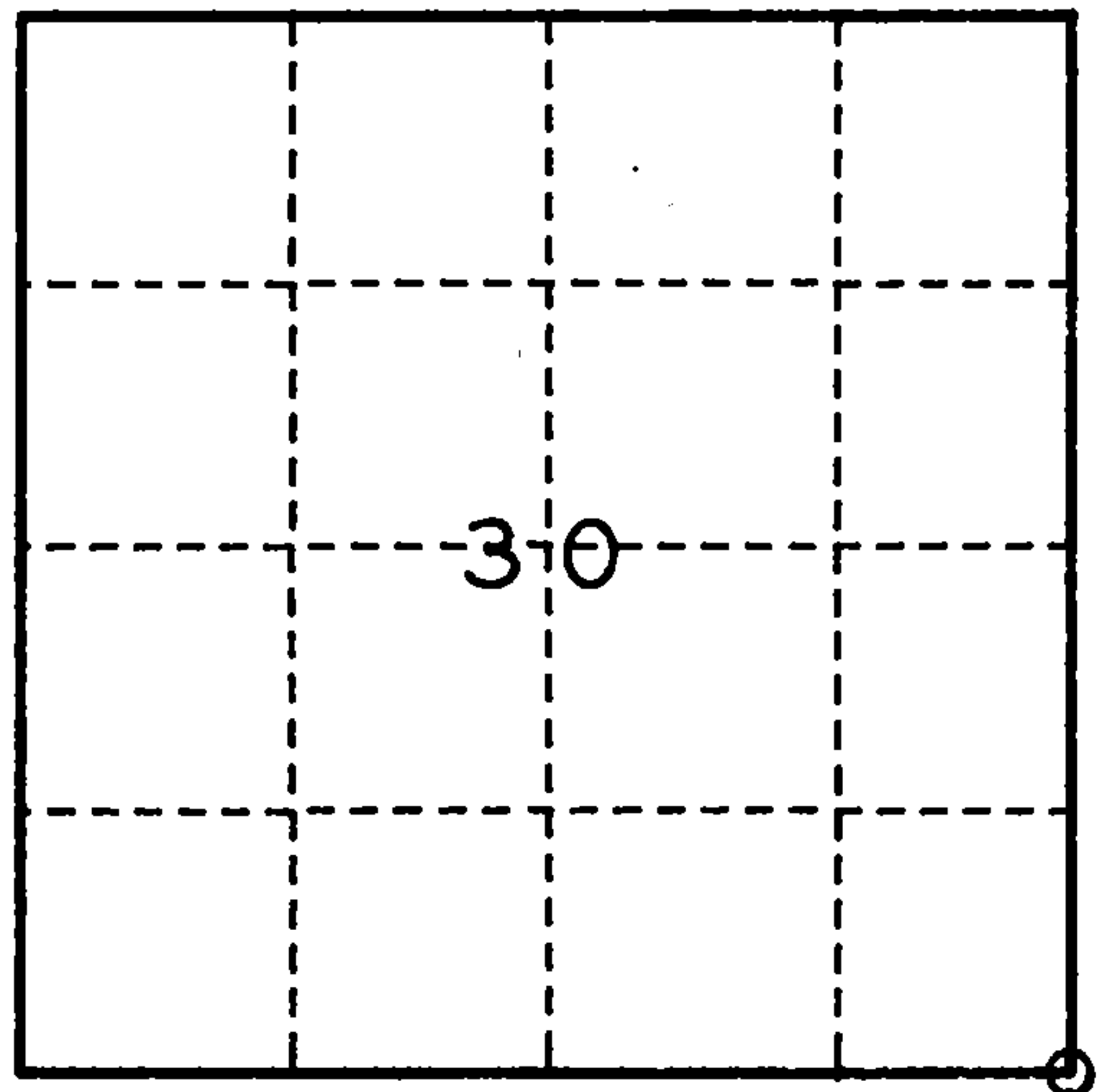
U. S. PUBLIC LAND SURVEY MONUMENT RECORD

INSTRUCTIONS:

This record shall show the location of the corner and shall include all of the following nine elements (a through i).

- (a) Identify the corner by reference to the U.S. public land survey system.
- = Corner monument restored.

SOUTHEAST CORNER OF SECTION 30, TWP. 34 N., R. 16 E.



- (b) Describe any record evidence, monument evidence, occupational evidence, testimonial evidence or any other material evidence you considered, and whether the monument was found or placed.

1858 - ORIGINAL SURVEY BY McBRIDE, SET WOOD POST, B.Ts - CEDAR 10" N.77°W. 20 LKS., CEDAR 8" N.36°E. 13 LKS., CEDAR 12" S.83°E. 18 LKS., CEDAR 10" S.43 W. 17 LKS.

1935 - ROAD SURVEY INDICATES A SQUARED CEDAR POST 3FT. HIGH AND A FOREST SERVICE POSTER

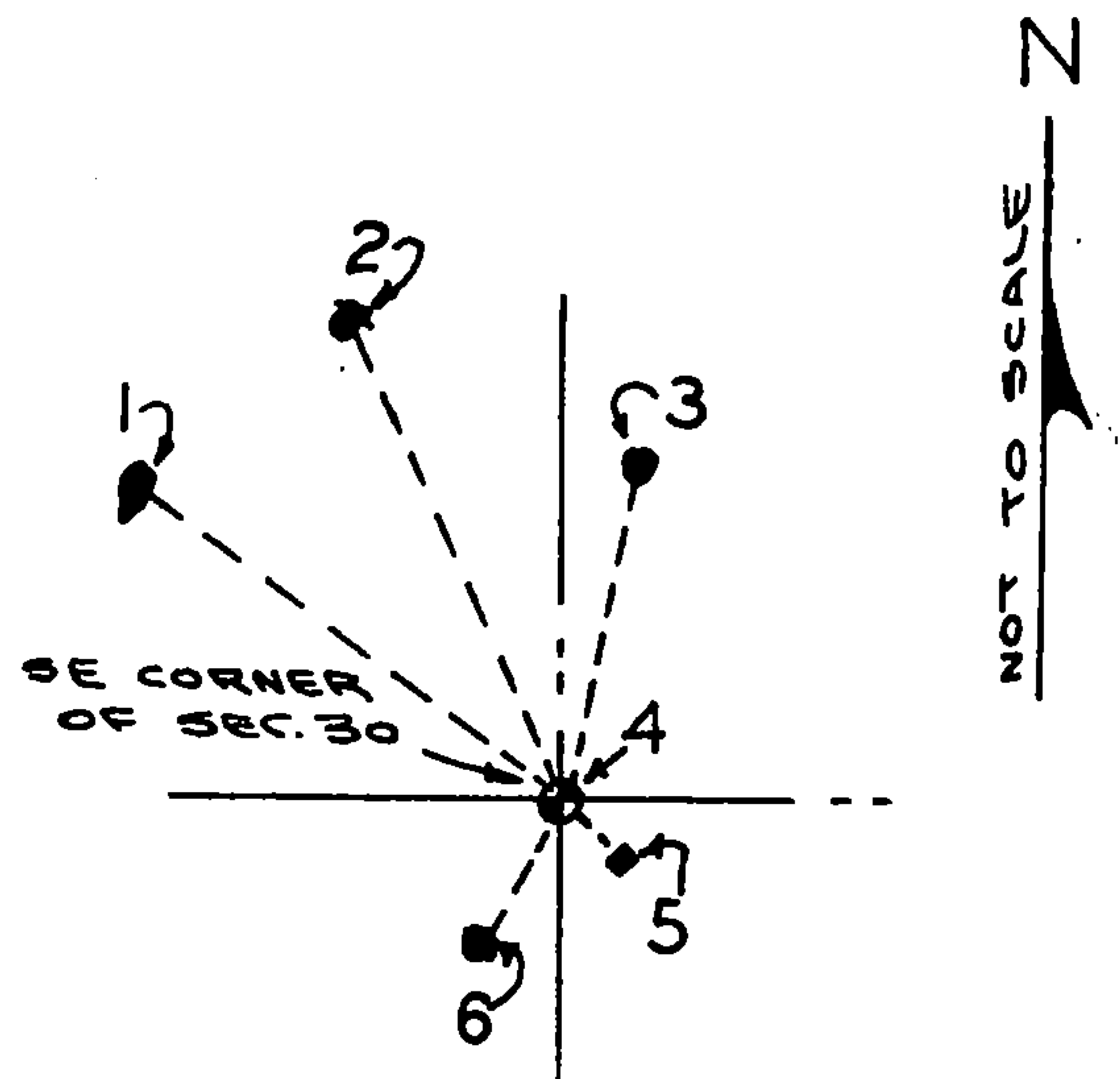
1984 - HARRISON R.L.S. NO. S-1651, SET A 2" DIA. ALUMINUM MONUMENT AT SECTION CORNER, B.Ts - TAMARACK 16" N.7°E. 42.84FT., CEDAR 6" S.25°W. 21.12FT., CEDAR 14" N.58°W. 67.33FT., WITNESS -STEEL SIGN POST SE 1.21FT.

1993 - DOBBRATZ R.L.S. NO. S-973, FOUND MONUMENT, B.Ts AND SIGN POST MADE ONE NEW B.T. AS NOTED BELOW.

- (c) In the plan view drawing below, provide reference ties to at least 4 witness monuments, or, if the location is within a municipality, to at least 2 witness monuments. (witness monuments shall be made of concrete, natural stone, iron or other equally durable material.)

- (d) Show a plan view drawing depicting the relevant monuments and reference ties which is sufficient in detail to enable accurate relocation of the corner monument if the corner monument is disturbed. Indicate north.

- WITNESS
1. B.T. CEDAR 14" N.56° W. 67.33FT. (EXISTING)
  2. B.T. SPRUCE 12" N.26° W. 64.05FT. (NEW)
  3. B.T. TAMARACK 16" N.12° E. 42.92FT. (EXISTING)
  4. 2" DIA. ALUMINUM MONUMENT AT CORNER (EXISTING)
  5. STEEL SIGN POST SOUTHEAST 1.21FT. (EXISTING)
  6. B.T. CEDAR 7" S.25° W. 21.07FT. (EXISTING)



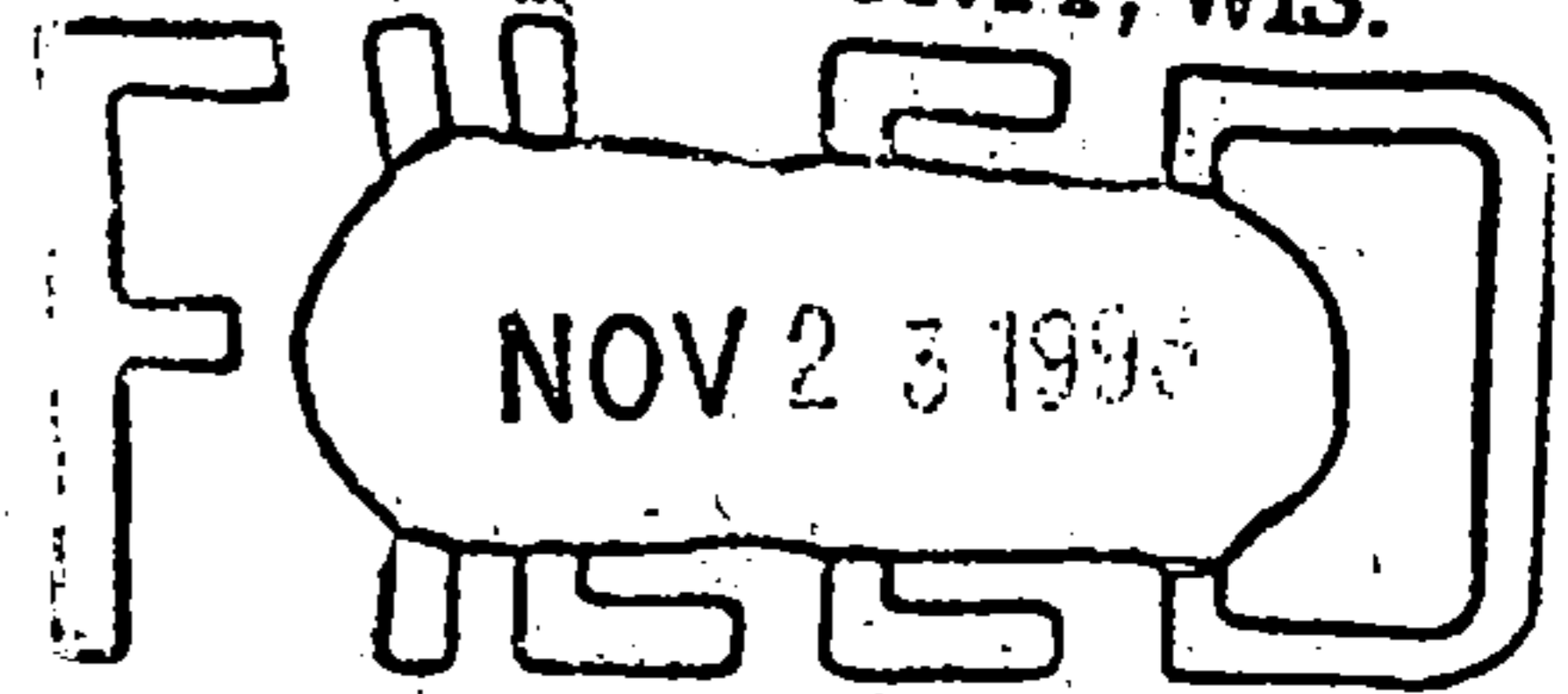
(e) Describe any material discrepancy between the location of the corner as restored or reestablished and the location of that corner as previously restored or reestablished by distance and direction. Show the discrepancy on the plan view drawing under (d), above. Show the distances between the corner as previously restored or reestablished and (1) the corner as restored or reestablished, and (2) to at least 2 of the witness monuments shown on the drawing in (d), above.

(f) Was the corner restored through acceptance of (1) an obliterated evidence location, or, (2) a found perpetuated location?

(2)

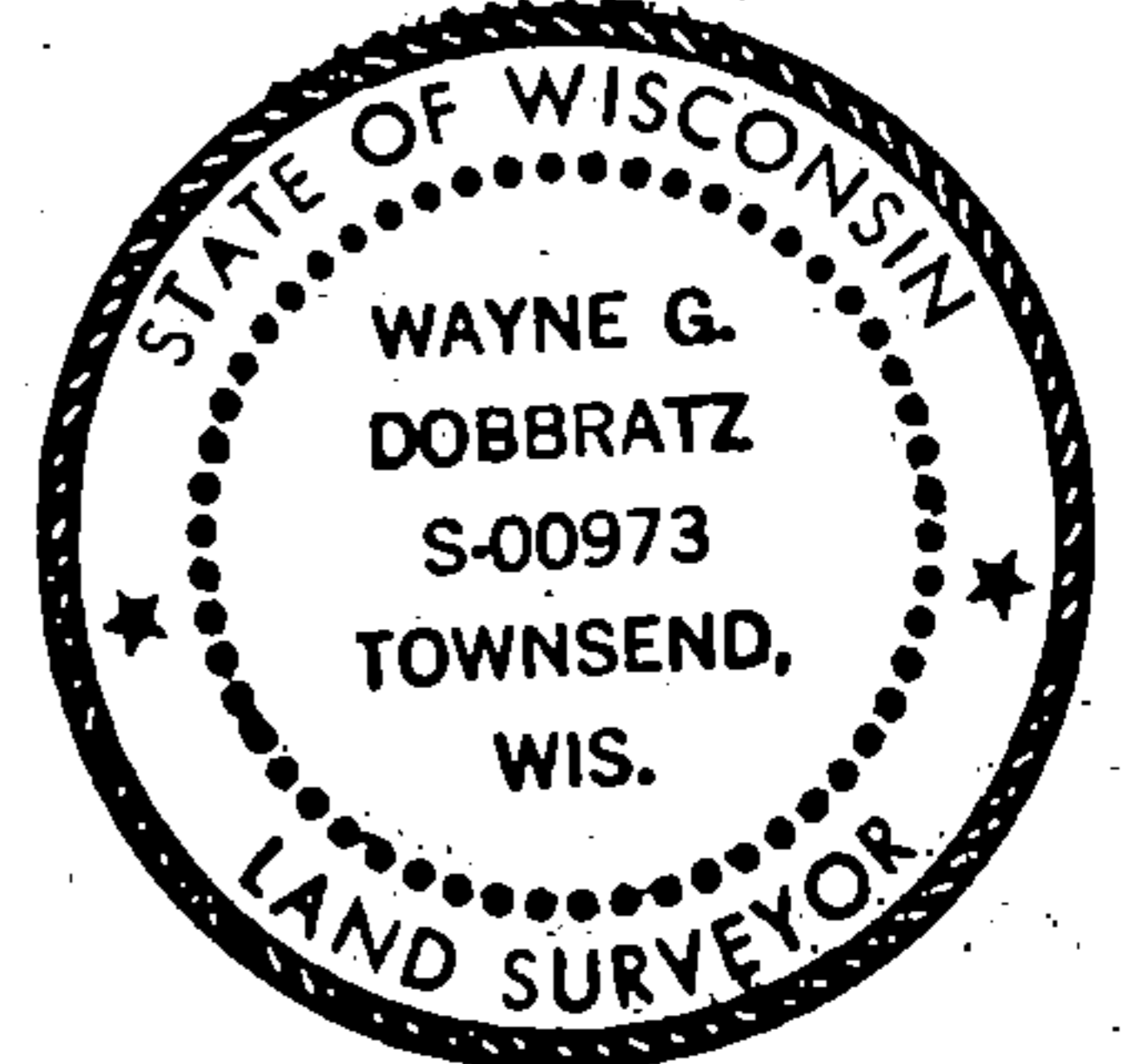
(g & h) Was the corner reestablished through lost corner proportionate methods? If so, show the method, including the directions and distances to other public land survey corners used as evidence or used for proportioning in determining the corner location?

REGISTER'S OFFICE  
FOREST COUNTY, WIS.



*Paul A. ...*  
9 OCT 1993  
M.  
Register of Deeds

Affix Land Surveyor Seal



(1) I, WAYNE G. DOBBRATZ

(type or print name) certify that the corner location shown on this record was determined by me or under my direction and control and that this U.S. Public Land Survey Monument Record is correct and complete to the best of my knowledge and belief.

*Wayne G. Dobbratz*

Signature

9/7/93

Date

CERTIFICATE READY FOR FILING:

*Ralph ...* 11-5-93  
Acting District Ranger