

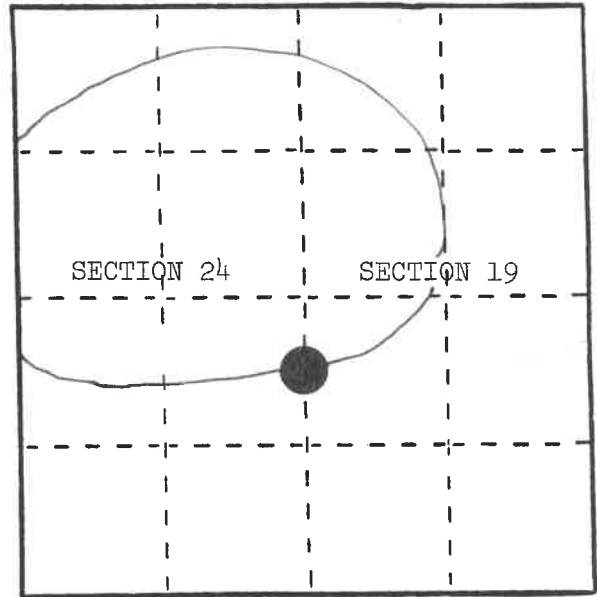
U. S. PUBLIC LAND SURVEY MONUMENT RECORD

INSTRUCTIONS: This record shall show the location of the corner and shall include all of the following nine elements (a through i).

(a) Identify the corner by reference to the U.S. public land survey system.

○ = Corner monument restored.

South Meander Corner, King Lake, Sections 19 and 24, T.34N., R.16E.



(b) Describe any record evidence, monument evidence, occupational evidence, testimonial evidence or any other material evidence you considered, and whether the monument was found or placed.

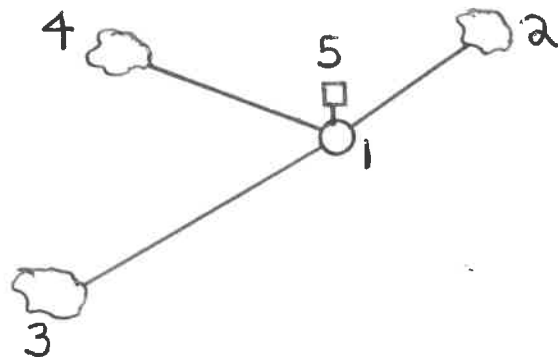
In 1858, James McBride set wood post with the following BT: Cedar, 12", south, 35 links.
1935, C. J. Priegel - Truck Trail #342, M.C. approximately S.26°W., 830' to two 12" x 20' culverts, road intersection.

September 29, 1983, landowner took Milo Stefan to corner which consists of 1½" iron pipe, an old post point, and a wooden picket next to it.

(c) In the plan view drawing below, provide reference ties to at least 4 witness monuments, or, if the location is within a municipality, to at least 2 witness monuments. (Witness monuments shall be made of concrete, natural stone, iron or other equally durable material.)
Describe witness monuments.

(d) Show a plan view drawing depicting the relevant monuments and reference ties which is sufficient in detail to enable accurate relocation of the corner monument if the corner monument is disturbed. Indicate north.

1. 2" x 36" aluminum monument stamped to identify the corner.
2. Yellow Birch, 6", N.40°E., 16.60'
3. Sugar, 12", S.45°W., 45.64'
4. Hemlock, 12", N.65°W., 25.63'
5. Steel Sign Post, North, 1.3'



REGISTER'S OFFICE }
Forest County, Wis. }

Received for record this... 24th day
of January... A.D., 1985
at 10:30 o'clock... A.M. and

recorded in Vol. 100-25
on page 10-25

Paul H. Schenck
REGISTER

N,0-25

4341624 3900

N,025

(e) Describe any material discrepancy between the location of the corner as restored or reestablished and the location of that corner as previously restored or reestablished by distance and direction. Show the discrepancy on the plan view drawing under (d), above. Show the distances between the corner as previously restored or reestablished and (1) the corner as restored or reestablished, and (2) to at least 2 of the witness monuments shown on the drawing in (d), above.

None.

(f) Was the corner restored through acceptance of (1) an obliterated evidence location, or, (2) a found perpetuated location?

(2) a found perpetuated location.

(g&h) Was the corner reestablished through lost corner proportionate methods? If so, show the method, including the directions and distances to other public land survey corners used as evidence or used for proportioning in determining the corner location?

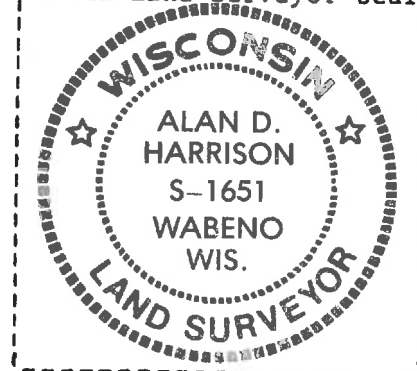
No.

(i) I, Alan D. Harrison
(type or print name) certify that the corner location shown on this record was determined by me or under my direction and control and that this U.S. Public Land Survey Monument Record is correct and complete to the best of my knowledge and belief.

Signature

Date

Affix Land Surveyor Seal



Alan D. Harrison 11/27/84

Document Number

189315

REGISTER'S OFFICE
Forest County, Wis.
Received for record this 18th day
of November A.D., 2005 at
3:55 o'clock P.M. and recorded
in Vol. Corner Restoration
page N/O 25
Kay Swanson, Deputy
Register of Deeds

U.S. PUBLIC LAND SURVEY MONUMENT RECORD

(As Required By S. A-E 5.02, WI Adm. Code)

HISTORY OF ORIGINAL CORNER ESTABLISHMENT AND SUBSEQUENT RESTORATIONS AND DESCRIPTION OF ANY RECORD, MONUMENT, OCCUPATIONAL, TESTIMONIAL, OR OTHER EVIDENCE CONSIDERED:

1858 - JAMES McBRIDE, SURVEYOR, SET POST

SET THE FOLLOWING WITNESSES:
CEDAR 12" SOUTH 35 LINKS

1935 - C.J. PRIEGEL - TRUCK TRAIL #342, M.C. APPROXIMATELY S26°W, 830' TO TWO 12" X 20' CULVERTS, ROAD INTERSECTION.

1983 - LANDOWNER TOOK MILO STEFAN TO CORNER WHICH CONSISTS OD 1.5" IRON PIPE, AN OLD POST POINT, AND A WOODEN PICKET NEXT TO IT.

1984 - ALAN D. HARRISON, SURVEYOR, S-1651, FOUND A PERPETUATED LOCATION.

SET THE FOLLOWING WITNESSES:
YELLOW BIRCH 8" N40°E 16.60 FEET
SUGAR MAPLE 12" S45°W 45.64 FEET
HEMLOCK 12" N65°W 25.63 FEET
STEEL SIGN NORTH 1.3 FEET

CORNER WAS: (CHECK ALL THAT APPLY)

- ☐ RESTORED THROUGH ACCEPTANCE OF AN OBLITERATED LOCATION
☒ RESTORED THROUGH ACCEPTANCE OF A FOUND PERPETUATED LOCATION
☐ CONSIDERED A LOST CORNER AND REESTABLISHED THROUGH LOST CORNER PROPORTIONATE METHODS (INCLUDING A PLAN VIEW DRAWING SHOWING DISTANCES AND DIRECTIONS TO OTHER PUBLIC LAND SURVEY CORNERS USED FOR PROPORTIONING AND DETERMINING THE CORNER LOCATION)
☐ RESTORED OF REESTABLISHED IN A LOCATION THAT DIFFERS FROM A PREVIOUS RESTORATION OF REESTABLISHMENT (INCLUDE A PLAN VIEW DRAWING AND INDICATE WHAT WAS SET AND/OR FOUND)

DESCRIBE THE MONUMENT AND ACCESSORIES USED TO PERPETUATE THE LOCATION OF THIS CORNER. (INCLUDE A PLAN VIEW DRAWING AND INDICATE WHAT WAS SET AND/OR FOUND)

FOUND A 2" PIPE w/3" ALUMINUM CAP STAMPED R.L.S. 1651.

FOUND THE FOLLOWING WITNESSES:

YELLOW BIRCH 8" N36°E 16.52 FEET - FOUND SINGLE HEADED NAIL IN TREE.
MAPLE 16" S45°W 45.64 FEET - SET D.H. NAIL IN TREE.
HEMLOCK 22" N68°W 26.08 FEET - SET D.H. NAIL IN TREE.

SET THE FOLLOWING WITNESSES:

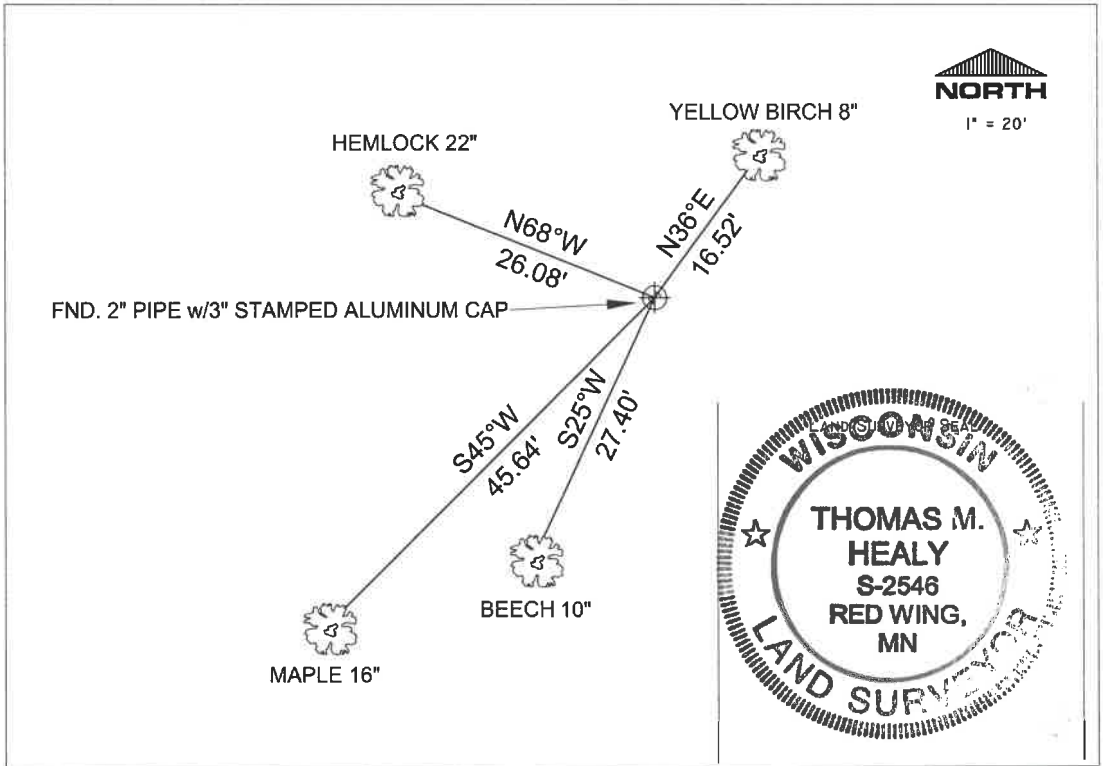
BEECH 10" S25°W 27.40 FEET - SET D.H. NAIL IN TREE.

ALL TREES HAVE CHEST AND STUMP BLAZES.
ALL FOUND BT'S HAVE ALUMINUM BEARING TAG.

THE EAST LINE M.C.
OF SECTION 24,
T. 34 N., R. 16 E.,
FOREST COUNTY, WISCONSIN



⊕ = LOCATION OF CORNER



I, THOMAS M. HEALY R.L.S. 2546

(TYPE OR PRINT NAME) CERTIFY THAT THE CORNER LOCATION SHOWN ON THIS ABOVE RECORD WAS DETERMINED BY ME OR UNDER MY DIRECTION AND CONTROL AND THAT THIS U.S. PUBLIC LAND SURVEY MONUMENT RECORD IS CORRECT AND COMPLETE TO THE BEST OF MY KNOWLEDGE AND BELIEF.

SIGNATURE

DATE

INDEX No. M.C - N/O 25

43416243900

N-O - 25