

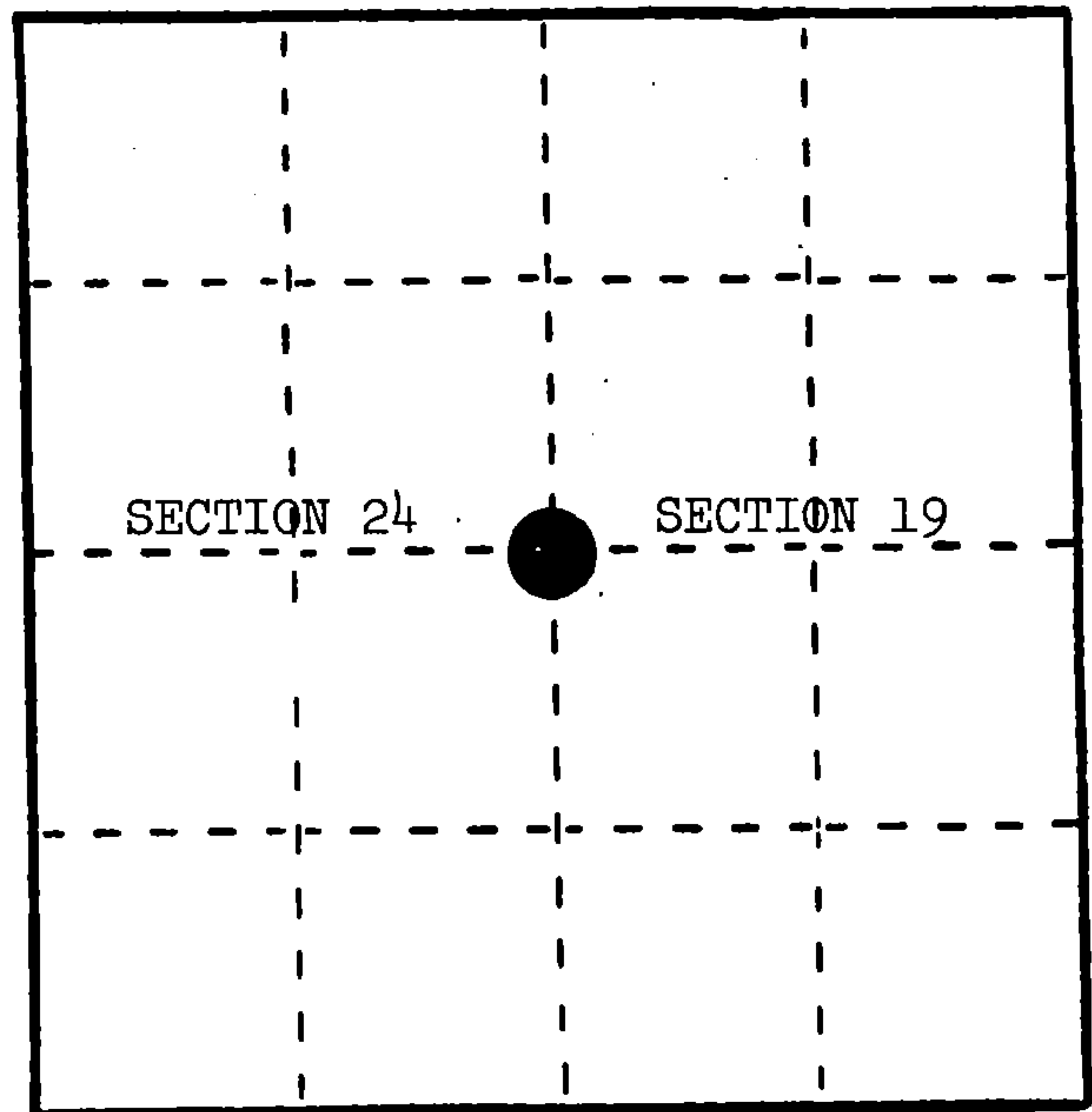
U. S. PUBLIC LAND SURVEY MONUMENT RECORD

INSTRUCTIONS: This record shall show the location of the corner and shall include all of the following nine elements (a through i).

- (a) Identify the corner by reference to the U.S. public land survey system.

○ = Corner monument restored.

Quarter corner to Sections 19 and 24, T.34N., R.16-17E.



- (b) Describe any record evidence, monument evidence, occupational evidence, testimonial evidence or any other material evidence you considered, and whether the monument was found or placed.

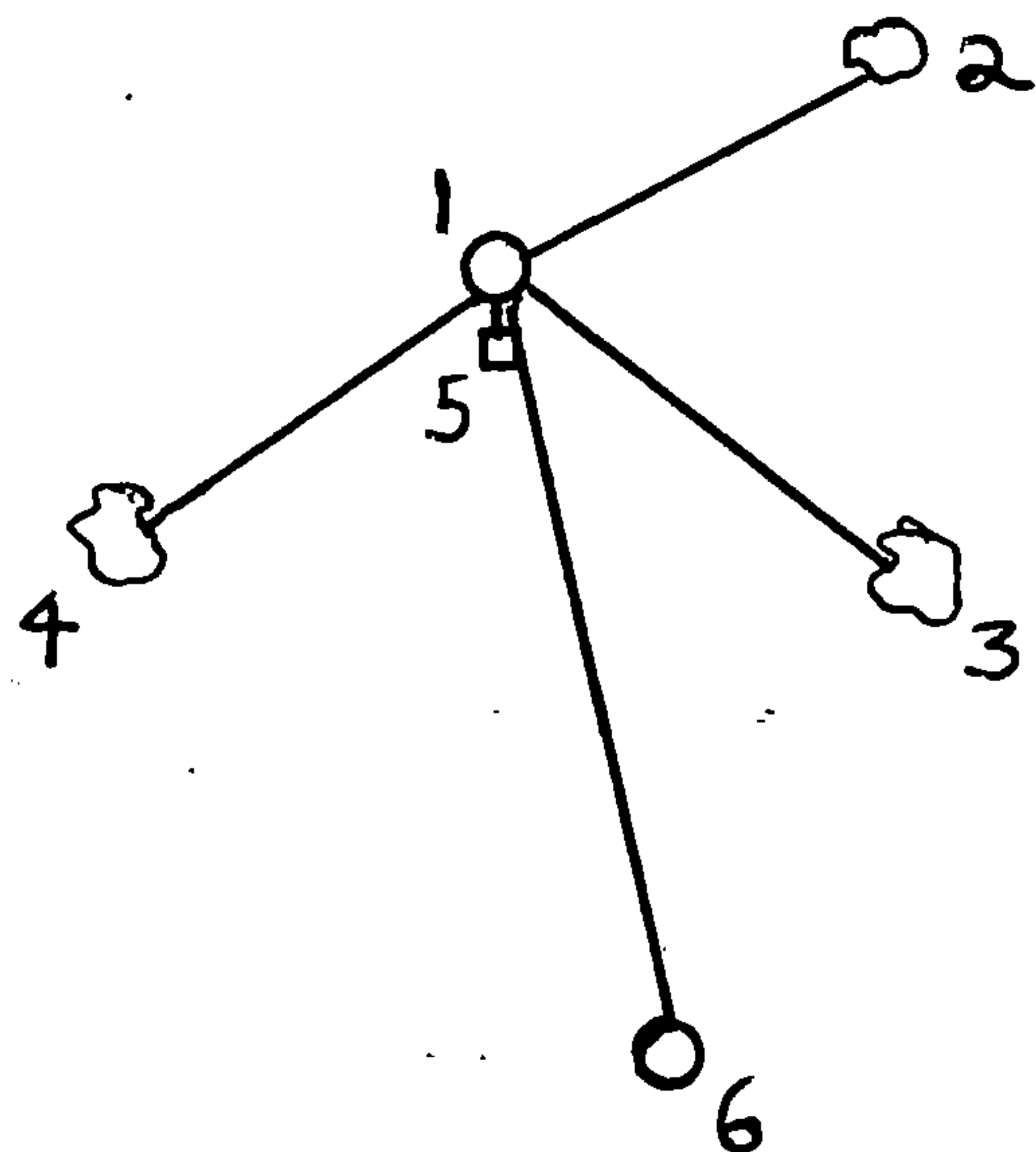
In 1839, Tom Sprague set post with the following BTs: Sugar, 12", S.1°W., 43 links; Sugar, 12", N.25°W., 42 links.

June 20, 1984, Alan Harrison found 3" iron pipe with screw-on cap stamped 24 1/4 19, S903, with squared Aspen stake lying alongside. Distance from M.C. on south side of King Lake is 2637'. B.I.A. forester set Aspen stake, which was monumented by S-903. G.L.O. distance from M.C. to quarter corner was 2485'. Set proportional corner at 2472.91' from M.C. after discussion with S-903.

- (c) In the plan view drawing below, provide reference ties to at least 4 witness monuments, or, if the location is within a municipality, to at least 2 witness monuments. (Witness monuments shall be made of concrete, natural stone, iron or other equally durable material.) Describe witness monuments.

- (d) Show a plan view drawing depicting the relevant monuments and reference ties which is sufficient in detail to enable accurate relocation of the corner monument if the corner monument is disturbed. Indicate north.

1. 2" x 36" aluminum monument stamped to identify the corner.
2. Sugar, 12", N.69°E., 29.22'
3. Sugar, 5", S.42°E., 43.75'
4. Sugar, 7", S.43°W., 50.97'
5. Steel Sign Post, South, 2.66'
6. County Monument, S.2°40'E., 154.51'



REGISTER'S OFFICE }
Forest County, Wis. }

Received for record this... day
of... A.D., 19... at
... o'clock... A... M. and

recorded in Vol. **CORNER RESTORATIONS**

on page **P-25**
Paul Aschenbrenner
REGISTER

(e) Describe any material discrepancy between the location of the corner as restored or reestablished and the location of that corner as previously restored or reestablished by distance and direction. Show the discrepancy on the plan view drawing under (d), above. Show the distances between the corner as previously restored or reestablished and (1) the corner as restored or reestablished, and (2) to at least 2 of the witness monuments shown on the drawing in (d), above.

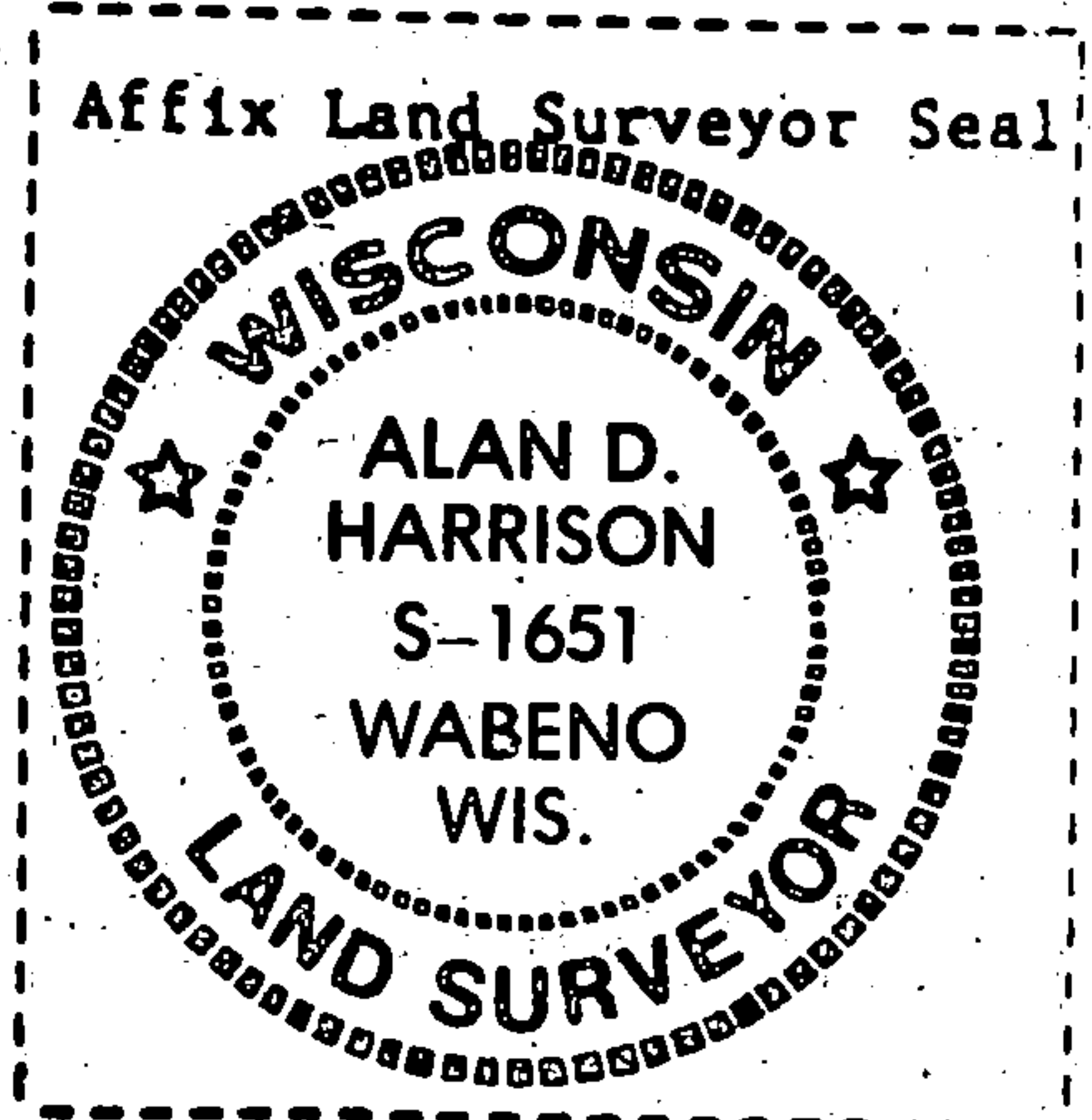
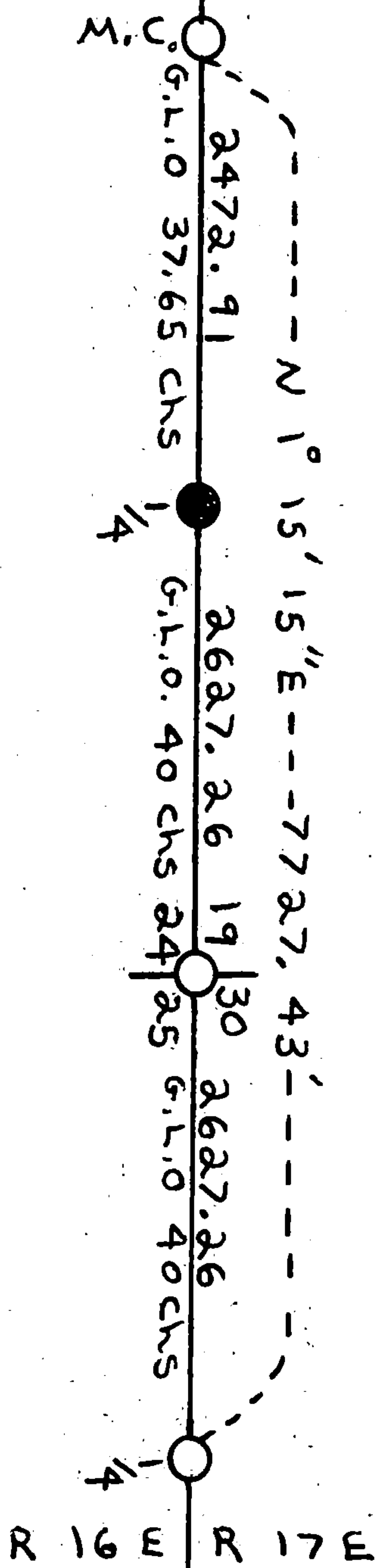
County monument set at 2637' from M.C. (original G.L.O. 2485').

(f) Was the corner restored through acceptance of (1) an obliterated evidence location, or, (2) a found perpetuated location?

No.

(g&h) Was the corner reestablished through lost corner proportionate methods? If so, show the method, including the directions and distances to other public land survey corners used as evidence or used for proportioning in determining the corner location?

Yes.



(1) I, Alan D. Harrison
(Type or print name) certify that the corner location shown on this record was determined by me or under my direction and control and that this U.S. Public Land Survey Monument Record is correct and complete to the best of my knowledge and belief.

Alan D. Harrison 11/27/84
Signature Date

Document Number

189316

REGISTER'S OFFICE
Forest County, Wis.
Received for record this 18th day
of November A.D., 2005 at
3:55 o'clock P.M. and recorded
in Vol. Corner Restoration
page P-25
Kay Swanson, Deputy
Register of Deeds

U.S. PUBLIC LAND SURVEY MONUMENT RECORD

(AS REQUIRED BY S. A-E 5.02, WI ADM. CODE)

HISTORY OF ORIGINAL CORNER ESTABLISHMENT AND SUBSEQUENT RESTORATIONS AND DESCRIPTION OF ANY RECORD, MONUMENT, OCCUPATIONAL, TESTIMONIAL, OR OTHER EVIDENCE CONSIDERED:

1839 - TOM SPRAGUE, SURVEYOR, SET POST

SET THE FOLLOWING WITNESSES:
SUGAR MAPLE 12" S01°W 43 LINKS
SUGAR MAPLE 12" N25°W 42 LINKS

1984 - ALAN HARRISON, SURVEYOR, S-1651, FOUND 3" IRON PIPE WITH SCREW ON CAP STAMPED 24 1/4 19, S903, WITH SQUARED ASPEN STAKE LYING ALONGSIDE. DISTANCE FROM M.C. ON SOUTH SIDE OF KING LAKE IS 2637'. B.I.A. FORESTER SET ASPEN STAKE, WHICH WAS MONUMENTED BY S-903. G.L.O. DISTANCE FROM M.C. TO QUARTER CORNER WAS 2485'. SET PROPORTIONAL CORNER AT 2472.91' FROM M.C. AFTER DISCUSSION WITH S-903.

SET THE FOLLOWING WITNESSES:
SUGAR MAPLE 12" N69°E 29.22 FEET
SUGAR MAPLE 5" S42°E 43.75 FEET
SUGAR MAPLE 7" S43°W 50.97 FEET
COUNTY MONUMENT S2°40'E 154.51 FEET
STEEL SIGN SOUTH 2.66 FEET

CORNER WAS: (CHECK ALL THAT APPLY)

- ☐ RESTORED THROUGH ACCEPTANCE OF AN OBLITERATED LOCATION
☒ RESTORED THROUGH ACCEPTANCE OF A FOUND PERPETUATED LOCATION
☐ CONSIDERED A LOST CORNER AND REESTABLISHED THROUGH LOST CORNER PROPORTIONATE METHODS (INCLUDING A PLAN VIEW DRAWING SHOWING DISTANCES AND DIRECTIONS TO OTHER PUBLIC LAND SURVEY CORNERS USED FOR PROPORTIONING AND DETERMINING THE CORNER LOCATION)
☐ RESTORED OF REESTABLISHED IN A LOCATION THAT DIFFERS FROM A PREVIOUS RESTORATION OF REESTABLISHMENT (INCLUDE A PLAN VIEW DRAWING AND INDICATE WHAT WAS SET AND/OR FOUND)

DESCRIBE THE MONUMENT AND ACCESSORIES USED TO PERPETUATE THE LOCATION OF THIS CORNER. (INCLUDE A PLAN VIEW DRAWING AND INDICATE WHAT WAS SET AND/OR FOUND)

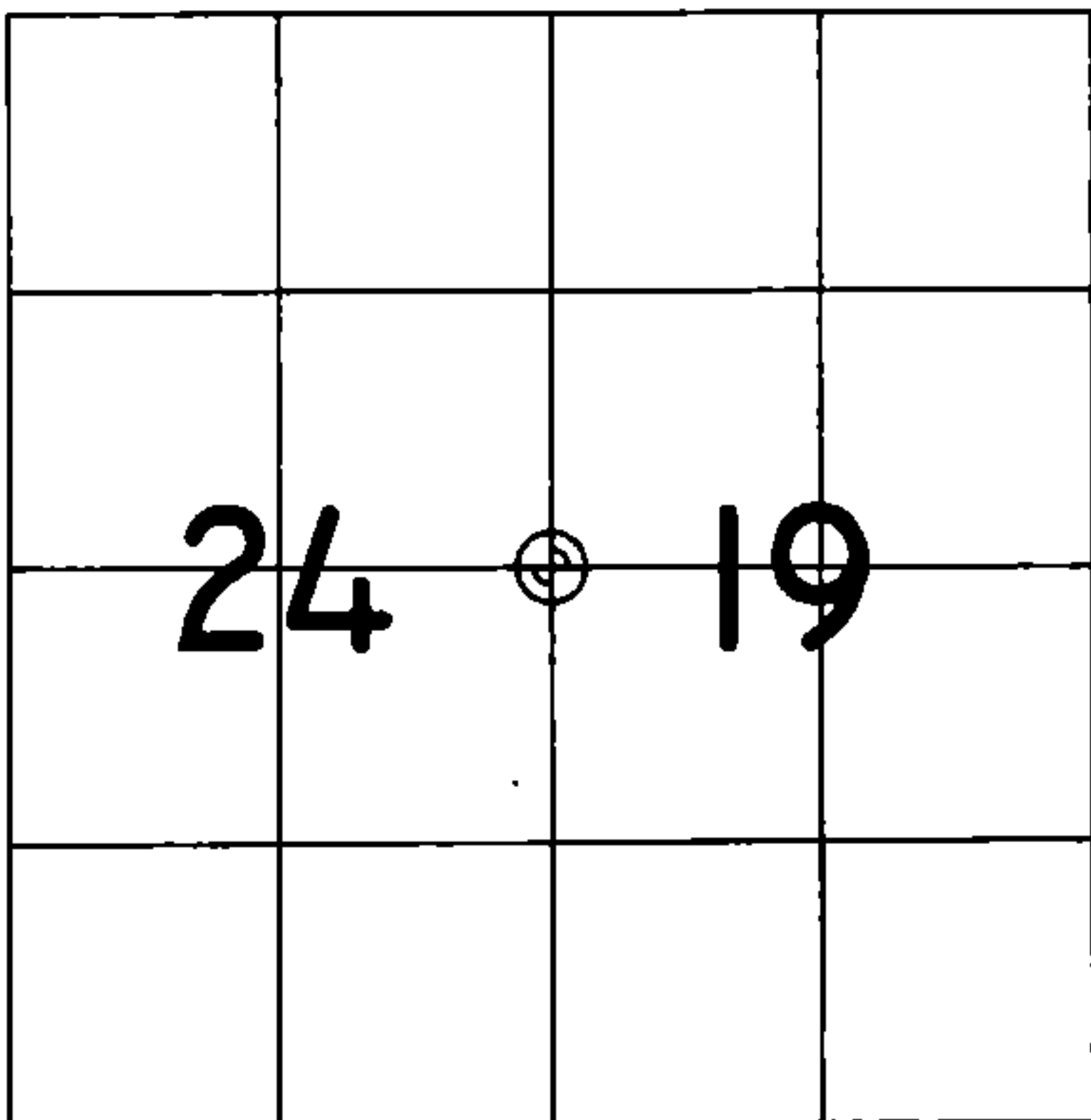
FOUND A 3" STAMPED ALUMINUM CAP.

FOUND THE FOLLOWING WITNESSES:

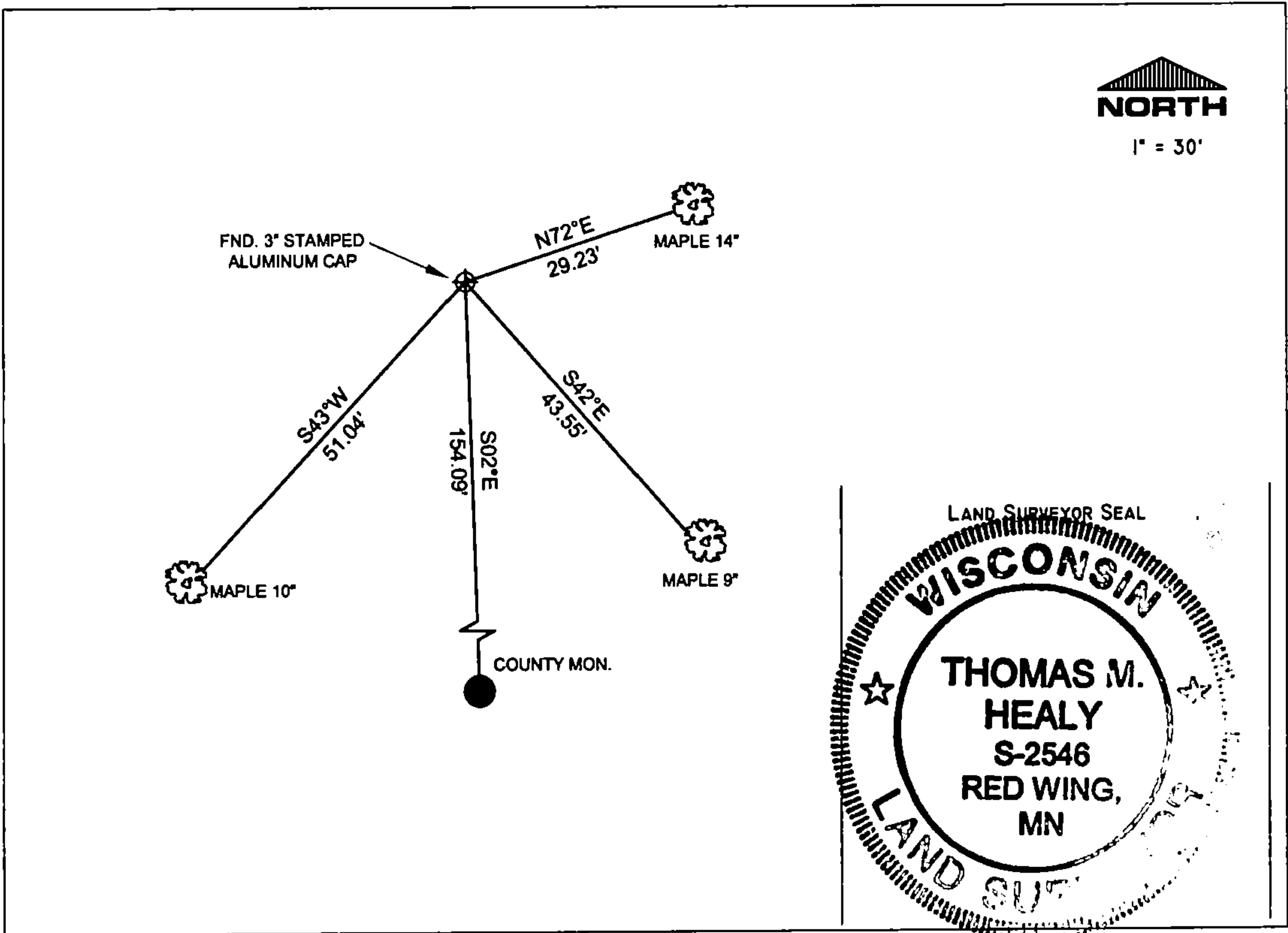
MAPLE 14" N72°E 29.23 FEET - FOUND NAIL IN TREE.
MAPLE 9" S42°E 43.55 FEET - FOUND NAIL IN TREE.
MAPLE 10" S43°W 51.04 FEET - FOUND NAIL IN TREE.
COUNTY MONUMENT S02°E 154.09 FEET
STEEL SIGN SOUTH 2.6 FEET

ALL TREES HAVE CHEST AND STUMP BLAZES AND TAGS.

THE EAST 1/4
CORNER OF SECTION 24
T. 34 N., R. 16 E.,
FOREST COUNTY, WISCONSIN



⊕ = LOCATION OF CORNER



I, THOMAS M. HEALY R.L.S. 2546

(TYPE OR PRINT NAME) CERTIFY THAT THE CORNER LOCATION SHOWN ON THIS ABOVE RECORD WAS DETERMINED BY ME OR UNDER MY DIRECTION AND CONTROL AND THAT THIS U.S. PUBLIC LAND SURVEY MONUMENT RECORD IS CORRECT AND COMPLETE TO THE BEST OF MY KNOWLEDGE AND BELIEF.

Thomas M. Healy 11-17-05
SIGNATURE DATE

INDEX No. P-25

43416242000

P-25