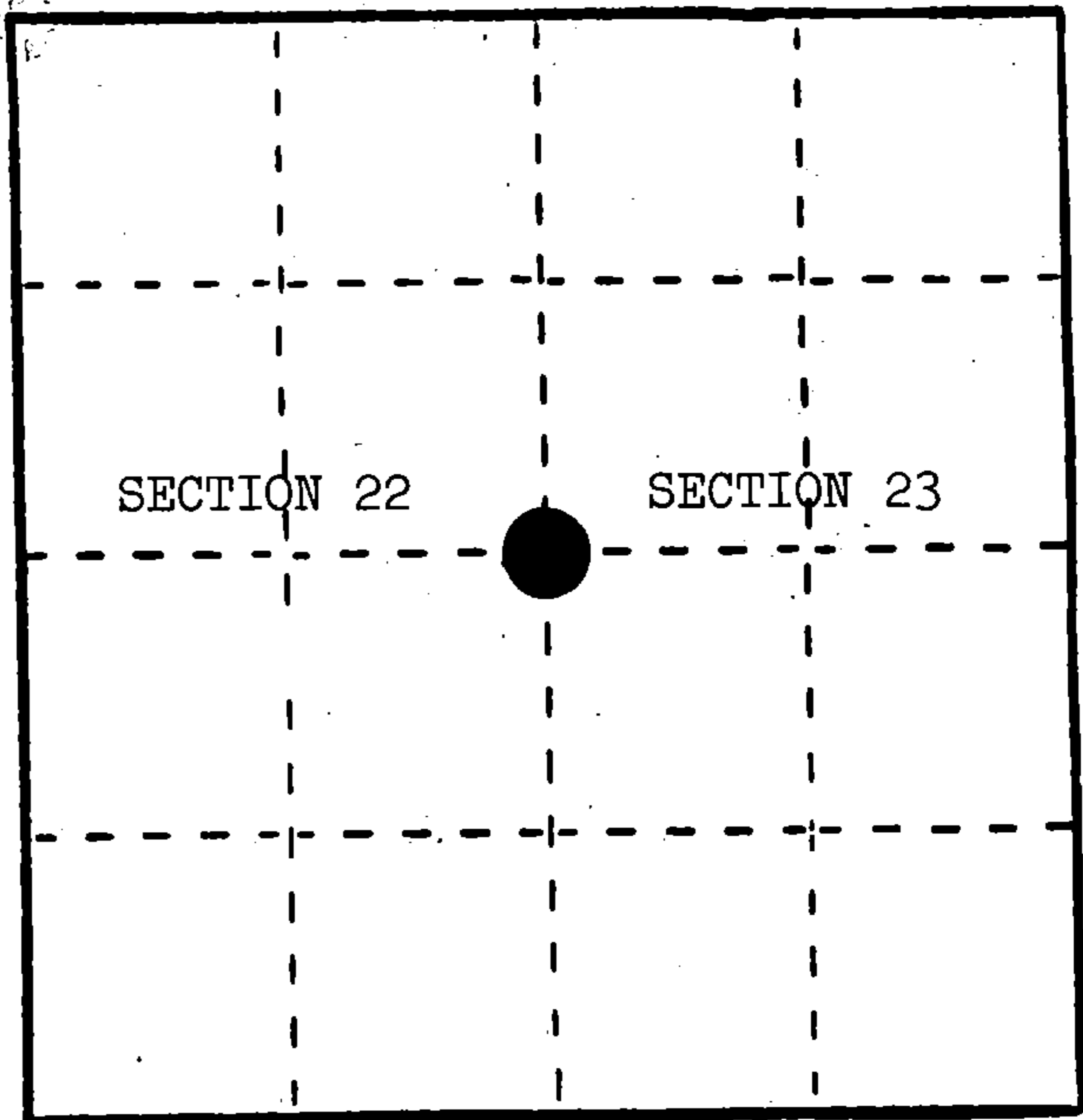


U. S. PUBLIC LAND SURVEY MONUMENT RECORD

INSTRUCTIONS: This record shall show the location of the corner and shall include all of the following nine elements (a through i).

- (a) Identify the corner by reference to the U.S. public land survey system.
- = Corner monument restored.

Quarter corner to Sections 22 and 23, T.34N., R.16E.



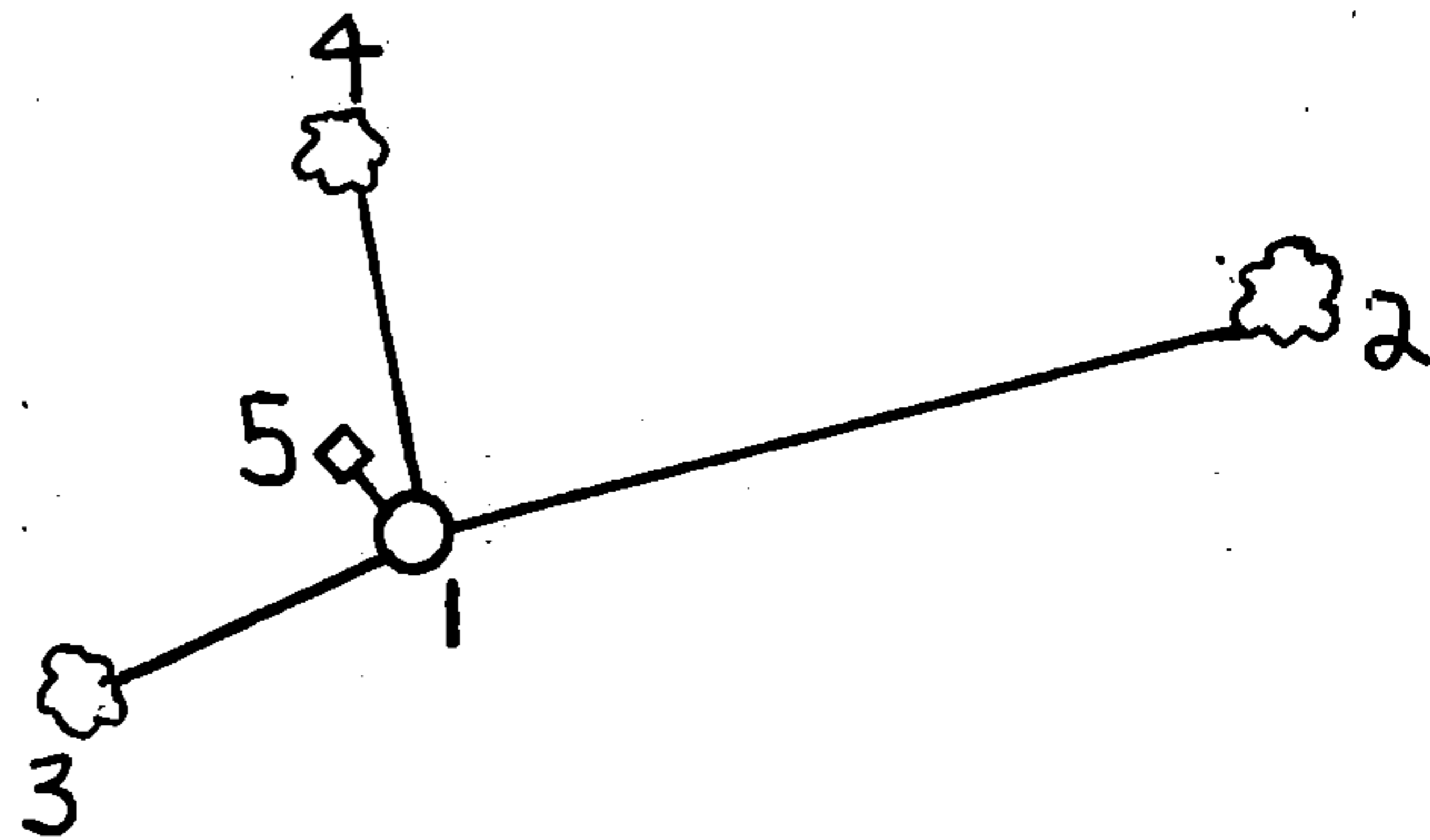
- (b) Describe any record evidence, monument evidence, occupational evidence, testimonial evidence or any other material evidence you considered, and whether the monument was found or placed.

In 1858, James McBride set wood post with the following BTs: Tamarack, 5", N.74°E., 116 links; Tamarack, 5", S.67°W., 18 links.

December 6, 1983, Alan Harrison found squared and scribed wood post and point in boggy marsh. At N.74°E., 76.5', 7½" Tamarack--scribing visible. Believed to be original. At N.8°E., 4.4', 4" Black Spruce with blazes D.B.H. and at base. Accepted as original corner.

- (c) In the plan view drawing below, provide reference ties to at least 4 witness monuments, or, if the location is within a municipality, to at least 2 witness monuments. (Witness monuments shall be made of concrete, natural stone, iron or other equally durable material.) Describe witness monuments.

- (d) Show a plan view drawing depicting the relevant monuments and reference ties which is sufficient in detail to enable accurate relocation of the corner monument if the corner monument is disturbed. Indicate north.



1. 2" x 60" aluminum monument stamped to identify the corner.
2. Tamarack, 7", N.74°E., 76.53'
3. Black Spruce, 6", S.46°W., 13.50'
4. Black Spruce, 5", N.8°W., 23.57'
5. Steel Sign Post, Northwest, 1.3'

REGISTER'S OFFICE }
 Forest County, Wis. }
 Received for record this... 24th day
 of... January A. D., 1985 at
 ... 10:30 o'clock... A M. and
 recorded in Vol. CORNER RESTORATIONS
 on page P-17
Paul A. Schenck
 Registrar

(e) Describe any material discrepancy between the location of the corner as restored or reestablished and the location of that corner as previously restored or reestablished by distance and direction. Show the discrepancy on the plan view drawing under (d), above. Show the distances between the corner as previously restored or reestablished and (1) the corner as restored or reestablished, and (2) to at least 2 of the witness monuments shown on the drawing in (d), above.

None.

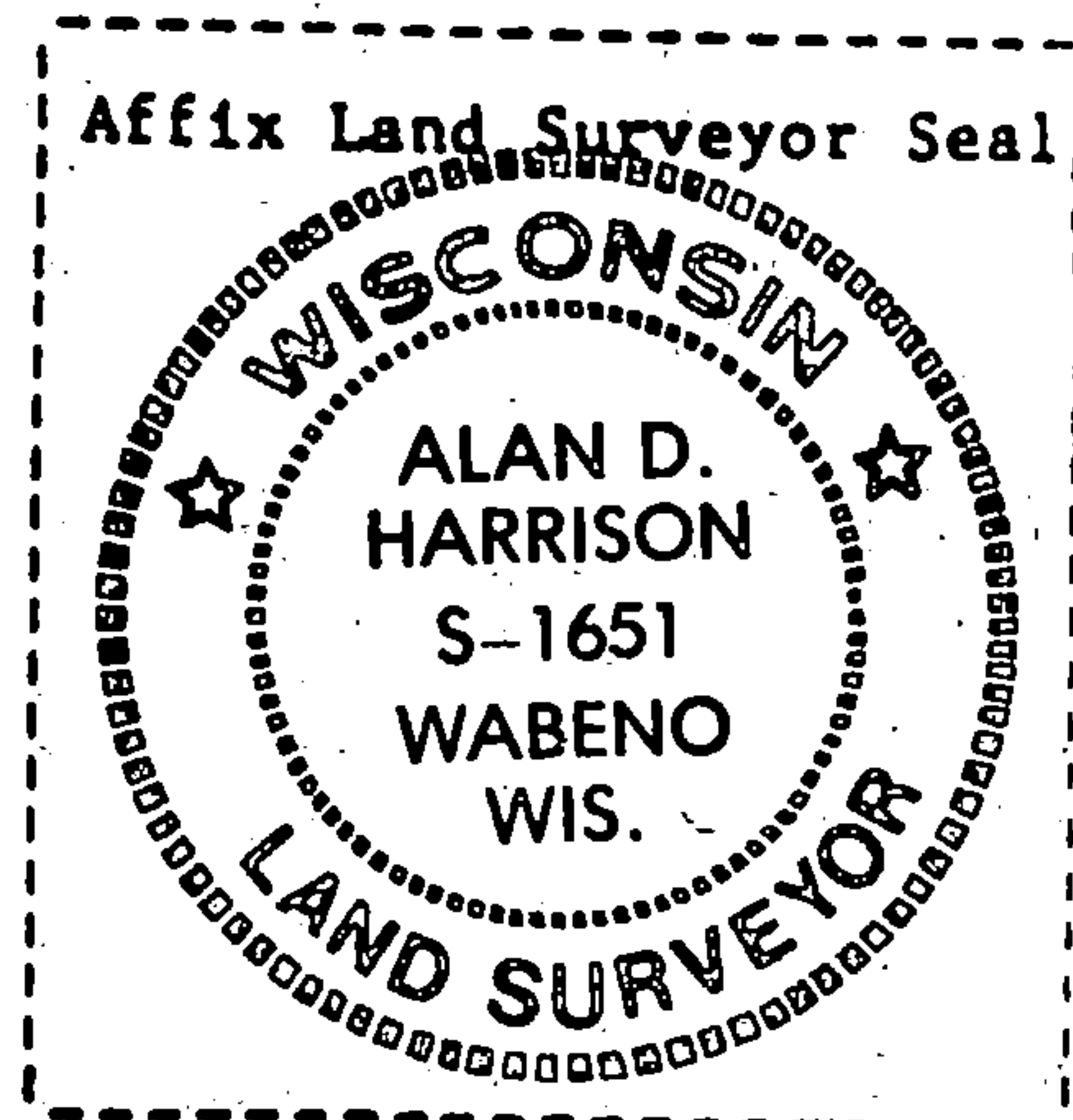
(f) Was the corner restored through acceptance of (1) an obliterated evidence location, or, (2) a found perpetuated location?

(2) a found perpetuated location.

(g&h) Was the corner reestablished through lost corner proportionate methods? If so, show the method, including the directions and distances to other public land survey corners used as evidence or used for proportioning in determining the corner location?

No.

Affix Land Surveyor Seal



Alan D. Harrison

(1) I, Alan D. Harrison
(Type or print name) certify that the corner location shown on this record was determined by me or under my direction and control and that this U.S. Public Land Survey Monument Record is correct and complete to the best of my knowledge and belief.

Alan D. Harrison
Signature

11/27/84
Date

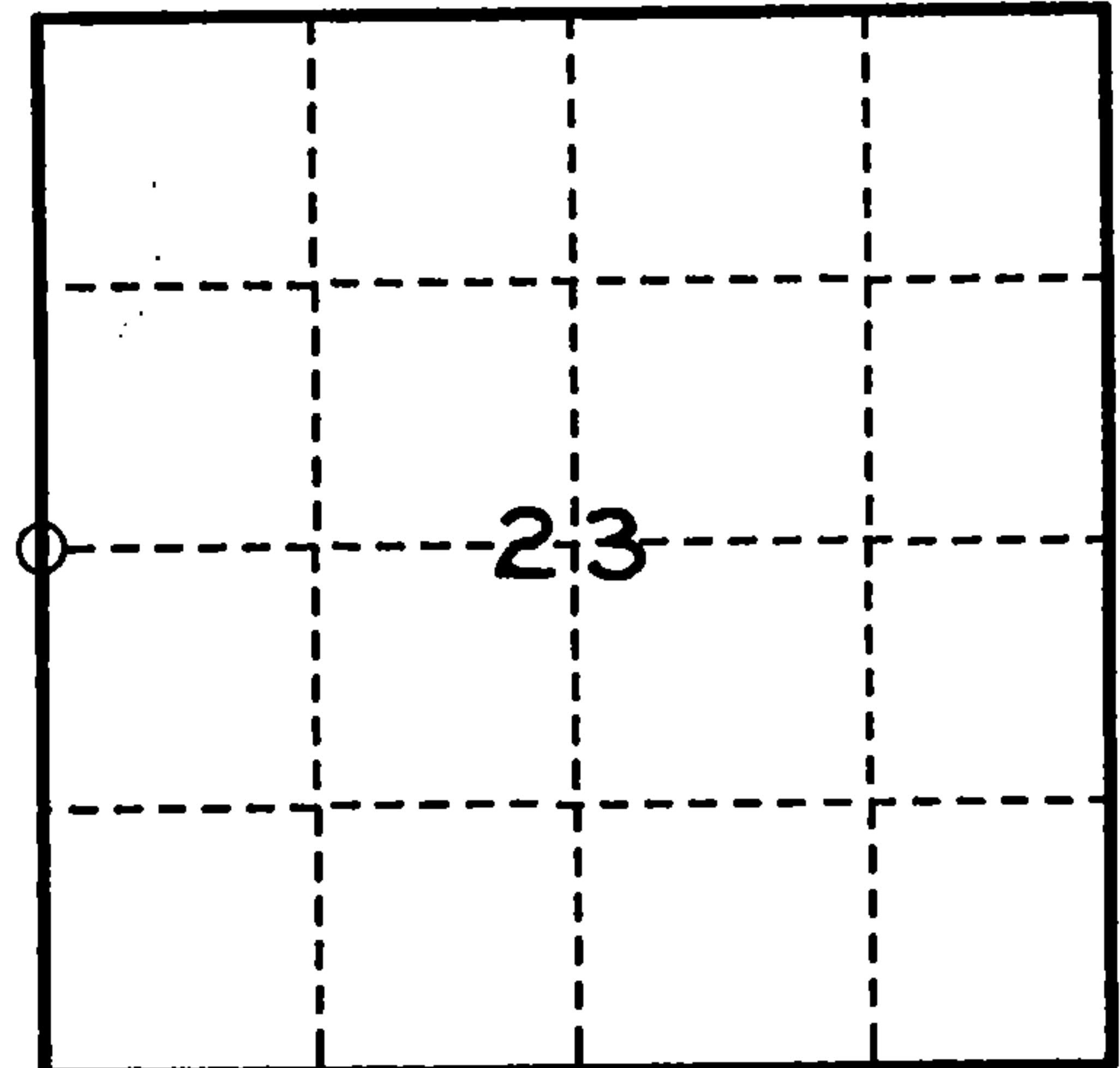
U. S. PUBLIC LAND SURVEY MONUMENT RECORD

INSTRUCTIONS:

This record shall show the location of the corner and shall include all of the following nine elements (a through i).

- (a) Identify the corner by reference to the U.S. public land survey system.
- = Corner monument restored.

WEST 1/4 CORNER OF SECTION 23, TWP. 34 N., R. 16 E.



- (b) Describe any record evidence, monument evidence, occupational evidence, testimonial evidence or any other material evidence you considered, and whether the monument was found or placed.

1858 - ORIGINAL SURVEY BY McBRIDE, SET 1/4 CORNER, B.Ts - TAMARACK 5" N.74°E. 116 LKS., TAMARACK 5" S.67 W. 18 LKS.

1984 - HARRISON R.L.S. NO. S-1651 SET 2" DIA. ALUMINUM MONUMENT AT 1/4 CORNER, B.Ts TAMARACK 7" N.74°E. 76.53FT., BLACK SPRUCE 6" S.46°W. 13.50FT., BLACK SPRUCE 5" N.8°W. 23.57FT. WITNESS - STEEL SIGN POST NW 1.30FT.

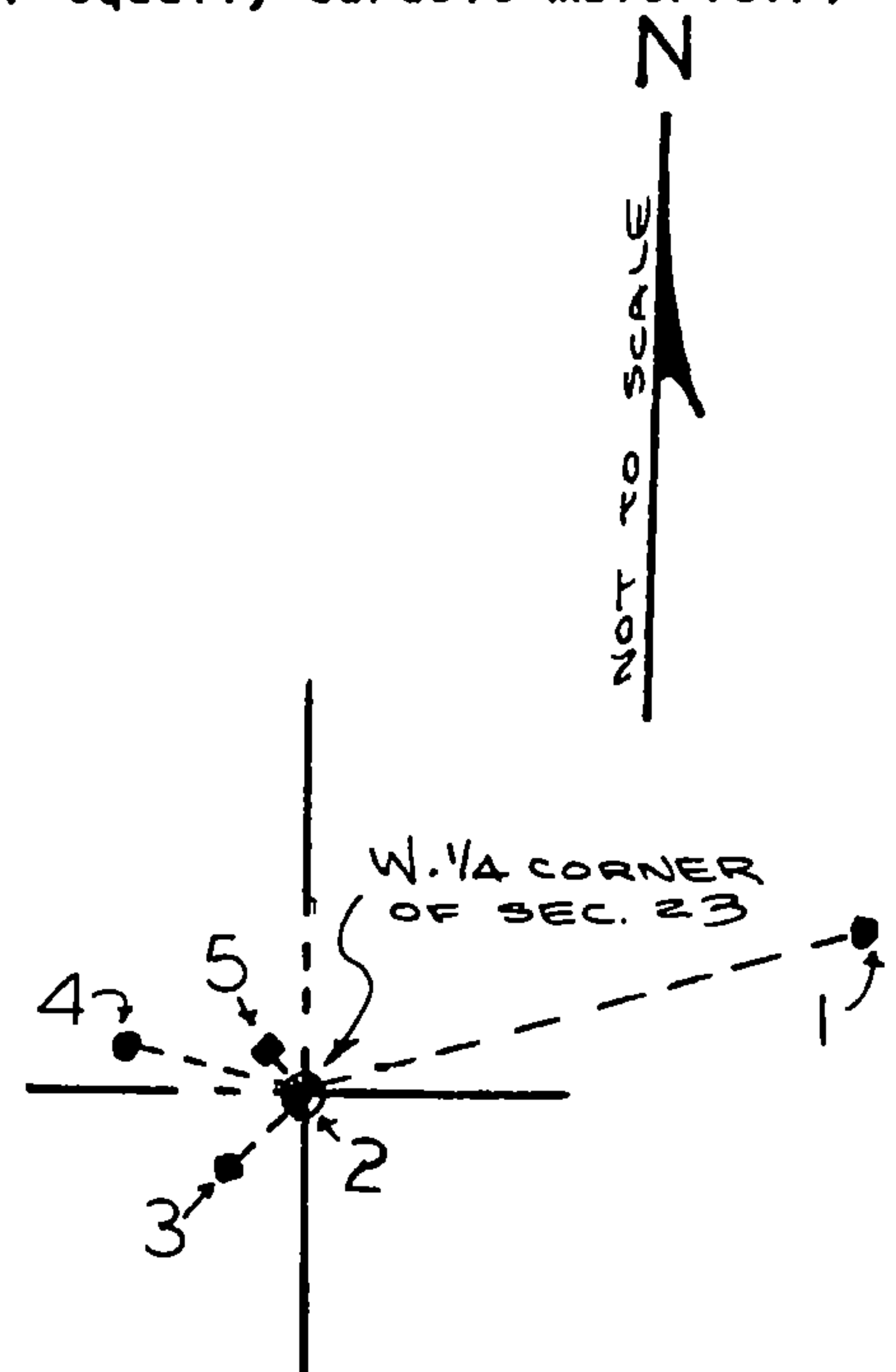
1993 - DOBBRATZ R.L.S. NO. S-973, FOUND MONUMENT, STEEL SIGN POST AND B.Ts EXCEPT B.T. BLACK SPRUCE 5" N.8°W. IS DOWN.

- (c) In the plan view drawing below, provide reference ties to at least 4 witness monuments, or, if the location is within a municipality, to at least 2 witness monuments. (witness monuments shall be made of concrete, natural stone, iron or other equally durable material.)

- (d) Show a plan view drawing depicting the relevant monuments and reference ties which is sufficient in detail to enable accurate relocation of the corner monument if the corner monument is disturbed. Indicate north.

WITNESS

1. B.T. TAMARACK 7" N.74°E. 76.53FT. (EXISTING)
2. 2" DIA. ALUMINUM MONUMENT (EXISTING)
3. B.T. BLACK SPRUCE 6" S.46°W. 13.50FT. (EXISTING)
4. B.T. BLACK SPRUCE 5" N.80°W. 24.14FT. (NEW)
5. STEEL SIGN POST NW 1.30FT. (EXISTING)



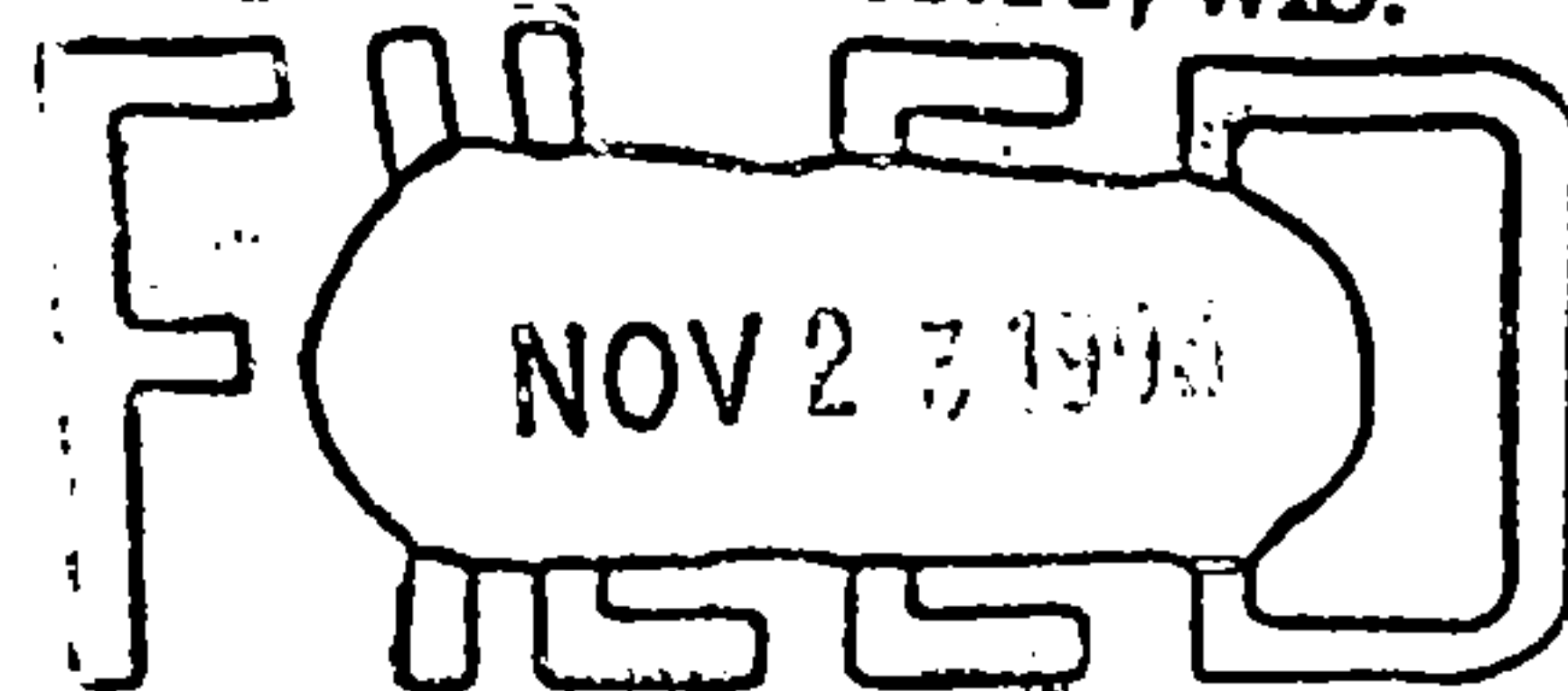
(a) Describe any material discrepancy between the location of the corner as restored or reestablished and the location of that corner as previously restored or reestablished by distance and direction. Show the discrepancy on the plan view drawing under (d), above. Show the distances between the corner as previously restored or reestablished and (1) the corner as restored or reestablished, and (2) to at least 2 of the witness monuments shown on the drawing in (d), above.

(f) Was the corner restored through acceptance of (1) an obliterated evidence location, or, (2) a found perpetuated location ?

(2)

(g & h) Was the corner reestablished through lost corner proportionate methods? If so, show the method, including the directions and distances to other public land survey corners used as evidence or used for proportioning in determining the corner location?

REGISTER'S OFFICE
FOREST COUNTY, WIS.



Paul A. ... At 9 o'clock M.
Register of Deeds

(1) I, WAYNE G. DOBBRATZ

(type or print name) certify that the corner location shown on this record was determined by me or under my direction and control and that this U.S. Public Land Survey Monument Record is correct and complete to the best of my knowledge and belief.

Wayne G. Dobbratz
Signature

8/7/93

Date

CERTIFICATE READY FOR FILING:

Ralph ... 11-5-93
Acting District Ranger

Affix Land Surveyor Seal

