

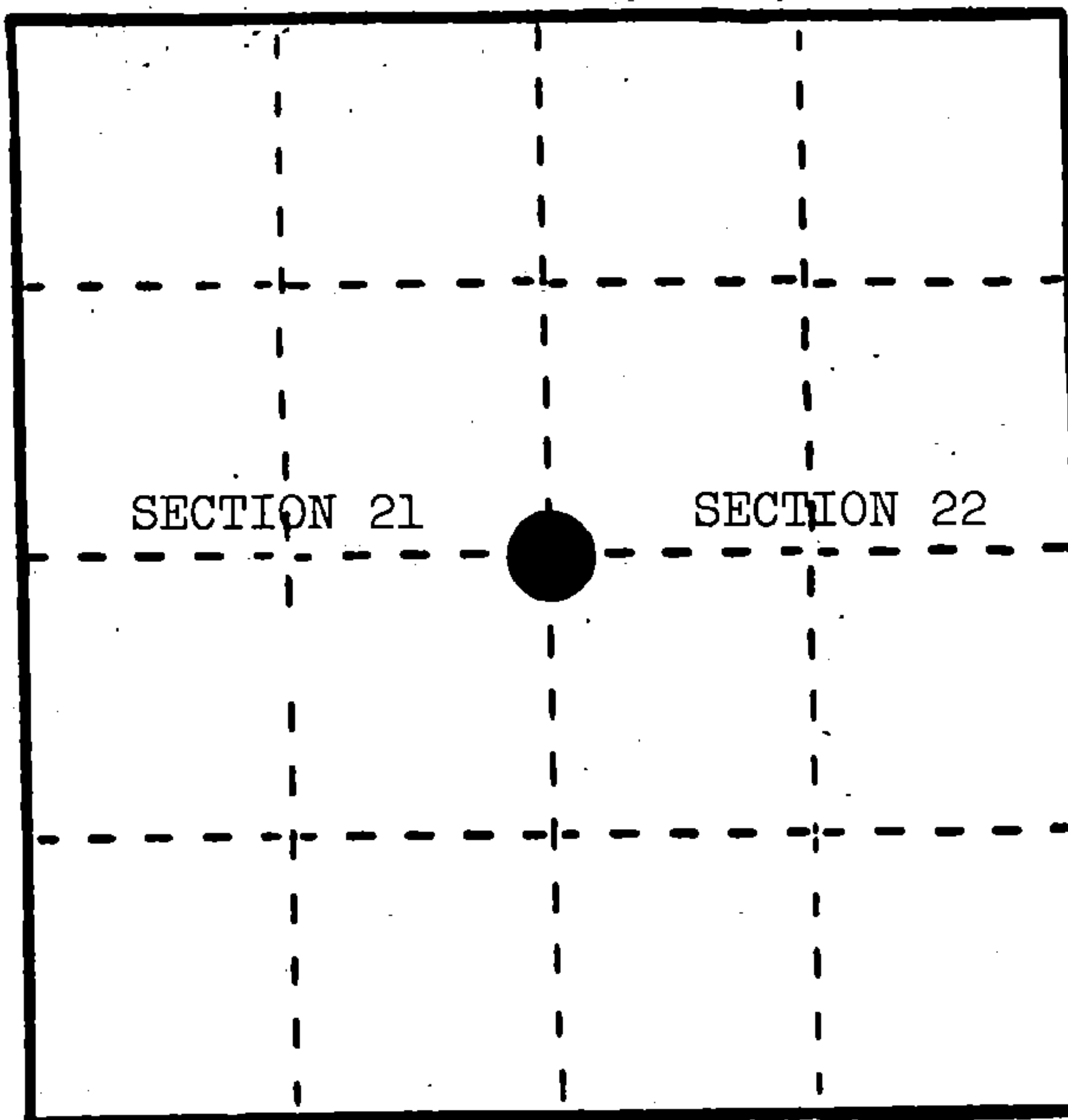
U. S. PUBLIC LAND SURVEY MONUMENT RECORD

INSTRUCTIONS : This record shall show the location of the corner and shall include all of the following nine elements (a through i).

(a) Identify the corner by reference to the U.S. public land survey system.

○ = Corner monument restored.

Quarter corner to Sections 21 and 22, T.34N., R.16E.



(b) Describe any record evidence, monument evidence, occupational evidence, testimonial evidence or any other material evidence you considered, and whether the monument was found or placed.

In 1858, James McBride set wood post with the following BTs: Birch, 8", N.65°E., 28 links; Hemlock, 12", S.58°W., 26 links. 3.0 chains south, enter Cedar swamp east-west.

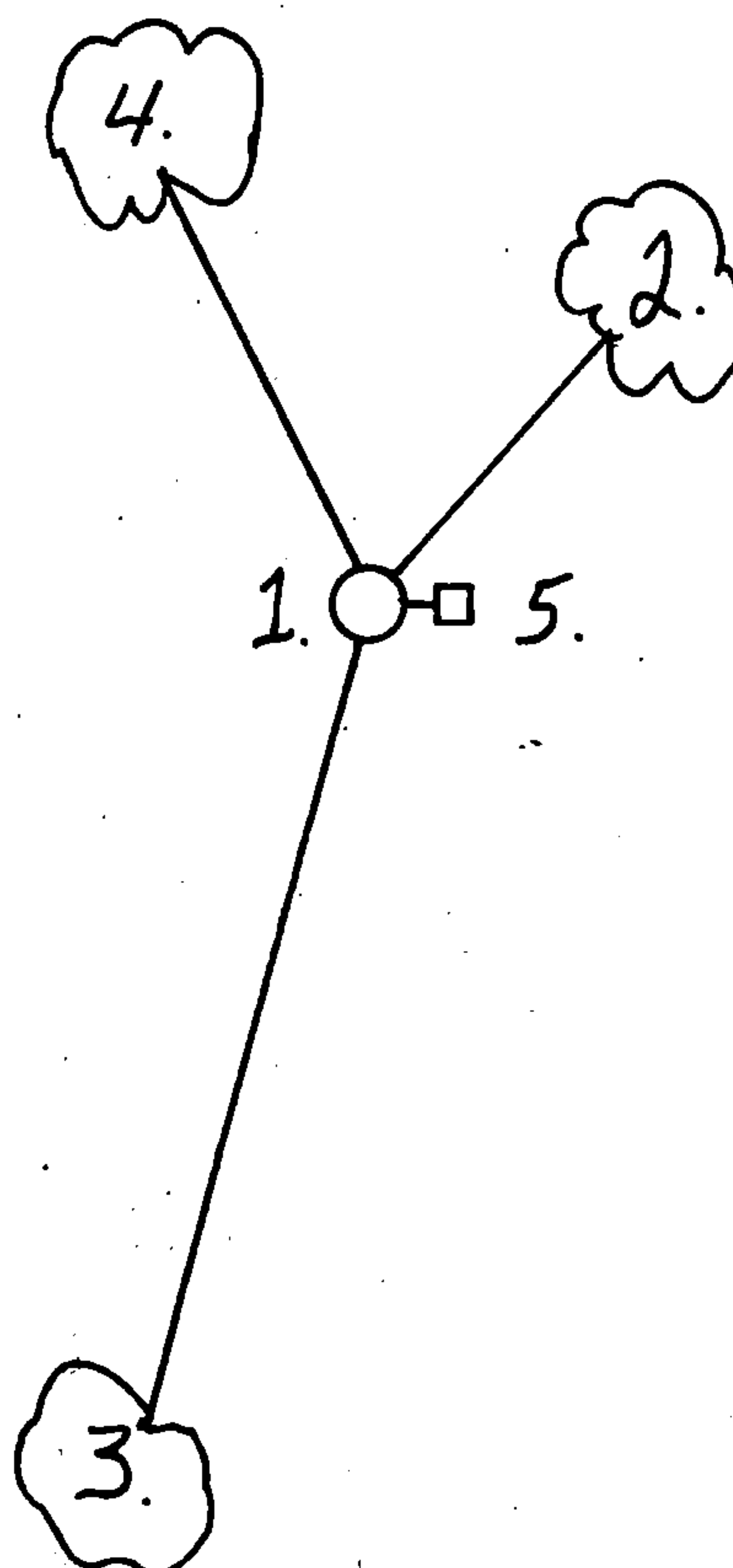
December 21, 1933, Raymond Leigh found 8" x 8" Cedar post and a 2" iron pipe, 6" high.

June 14, 1984, Alan Harrison searched area, found 2" iron pipe alongside rock pile with post hole in center. No trace of BTs. Swamp call fits well.

(c) In the plan view drawing below, provide reference ties to at least 4 witness monuments, or, if the location is within a municipality, to at least 2 witness monuments. (Witness monuments shall be made of concrete, natural stone, iron or other equally durable material.) Describe witness monuments.

(d) Show a plan view drawing depicting the relevant monuments and reference ties which is sufficient in detail to enable accurate relocation of the corner monument if the corner monument is disturbed. Indicate north.

1. 2" x 30" aluminum monument stamped to identify the corner; in a mound of stone.
2. Aspen, 6", N.47°E., 12.64'
3. Black Cherry, 5", S.18°W., 46.60'
4. Black Cherry, 8", N.31°W., 22.66'
5. Steel Sign Post, East, 1.44'



REGISTER'S OFFICE }
 Forest County, Wis. }
 Received for record this 24th day
 of January, A. D., 1985 at
10:30 o'clock A. M. and
 recorded in Vol. CORNER RESTORATIONS
 on page P-13
Paul Ascherbrenner
 REGISTER

(e) Describe any material discrepancy between the location of the corner as restored or reestablished and the location of that corner as previously restored or reestablished by distance and direction. Show the discrepancy on the plan view drawing under (d), above. Show the distances between the corner as previously restored or reestablished and (1) the corner as restored or reestablished, and (2) to at least 2 of the witness monuments shown on the drawing in (d), above.

None.

(f) Was the corner restored through acceptance of (1) an obliterated evidence location, or, (2) a found perpetuated location?

(1) an obliterated evidence location.

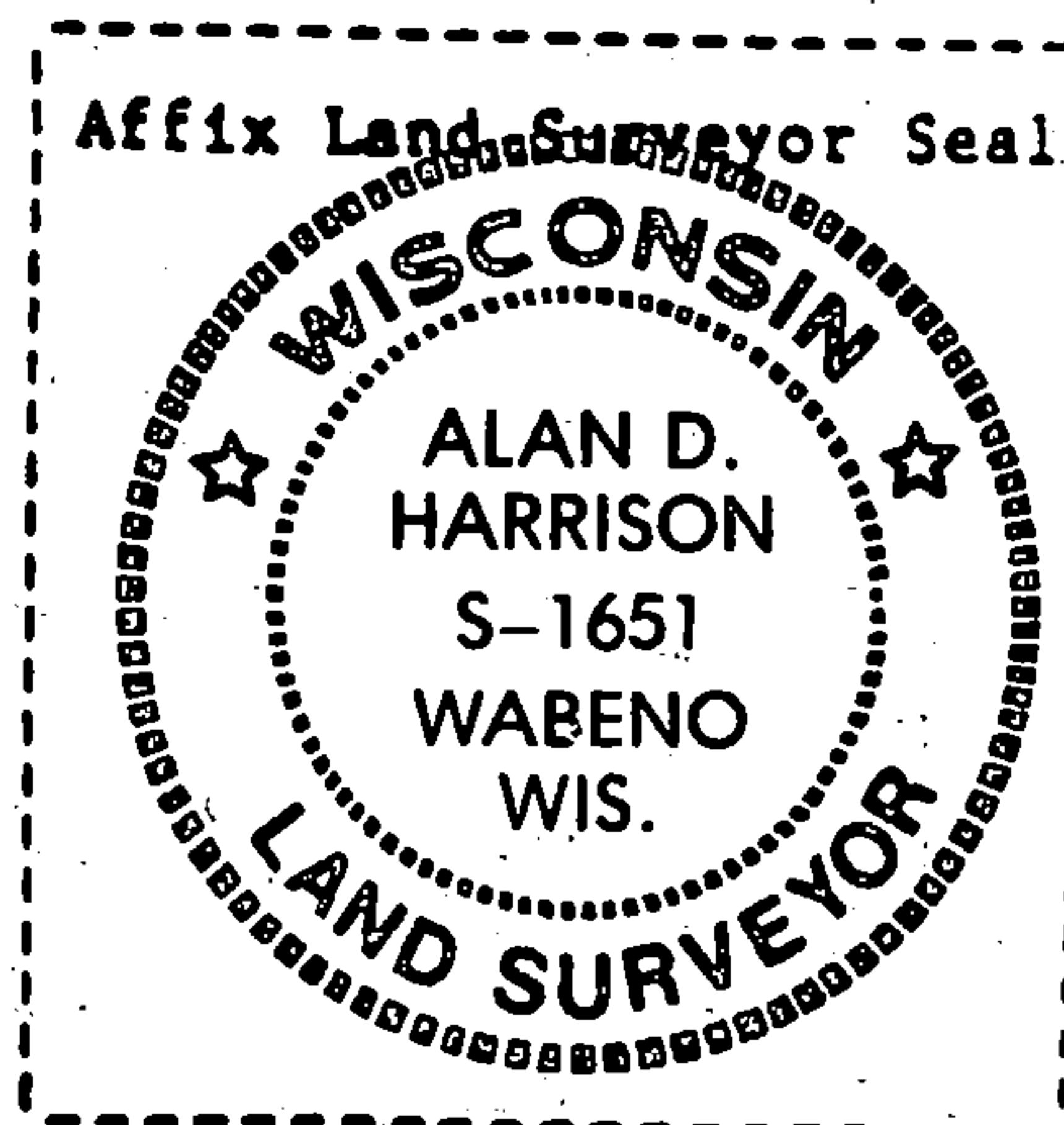
(g&h) Was the corner reestablished through lost corner proportionate methods? If so, show the method, including the directions and distances to other public land survey corners used as evidence or used for proportioning in determining the corner location?

No.

(i) I, Alan D. Harrison
(type or print name) certify that the corner location shown on this record was determined by me or under my direction and control and that this U.S. Public Land Survey Monument Record is correct and complete to the best of my knowledge and belief.

Alan D. Harrison
Signature

12/10/84
Date



Document Number

189314

REGISTER'S OFFICE
Forest County, Wis.

Received for record this 18th day
of November A.D., 2005 at
3:55 o'clock P.M. and recorded
in Vol. Corner Restoration
page P-13

Kae Swanson, Deputy
Register of Deeds

U.S. PUBLIC LAND SURVEY MONUMENT RECORD

(AS REQUIRED BY S. A-E 5.02, WI ADM. CODE)

HISTORY OF ORIGINAL CORNER ESTABLISHMENT AND SUBSEQUENT RESTORATIONS AND DESCRIPTION OF ANY RECORD, MONUMENT, OCCUPATIONAL, TESTIMONIAL, OR OTHER EVIDENCE CONSIDERED:

1858 - JAMES McBRIDE, SURVEYOR, SET POST

SET THE FOLLOWING WITNESSES:

BIRCH 8" N65°E 28 LINKS
HEMLOCK 12" S58°W 26 LINKS

1933 - RAYMOND LEIGH, FOUND AN 8" X 8" CEDAR POST AND A 2" IRON PIPE, 6" HIGH.

1984 - ALAN HARRISON, SURVEYOR, S-1651, SEARCHED AREA, FOUND A 2" IRON PIPE ALONGSIDE A ROCK PILE WITH POST HOLE ON CENTER. NO TRACE OF BT'S. SWAMP CALL FITS WELL. SET A 2" X 30" ALUMINUM MONUMENT IN A MOUND OF STONES.

SET THE FOLLOWING WITNESSES:

ASPEN 6" N47°E 12.64 FEET
BLACK CHERRY 5" S18°W 46.60 FEET
BLACK CHERRY 8" N31°W 22.66 FEET
STEEL SIGN POST EAST 1.44 FEET

CORNER WAS: (CHECK ALL THAT APPLY)

- RESTORED THROUGH ACCEPTANCE OF AN OBLITERATED LOCATION
- RESTORED THROUGH ACCEPTANCE OF A FOUND PERPETUATED LOCATION
- CONSIDERED A LOST CORNER AND REESTABLISHED THROUGH LOST CORNER PROPORTIONATE METHODS (INCLUDING A PLAN VIEW DRAWING SHOWING DISTANCES AND DIRECTIONS TO OTHER PUBLIC LAND SURVEY CORNERS USED FOR PROPORTIONING AND DETERMINING THE CORNER LOCATION)
- RESTORED OR REESTABLISHED IN A LOCATION THAT DIFFERS FROM A PREVIOUS RESTORATION OF REESTABLISHMENT (INCLUDE A PLAN VIEW DRAWING AND INDICATE WHAT WAS SET AND/OR FOUND)

DESCRIBE THE MONUMENT AND ACCESSORIES USED TO PERPETUATE THE LOCATION OF THIS CORNER. (INCLUDE A PLAN VIEW DRAWING AND INDICATE WHAT WAS SET AND/OR FOUND)

FOUND A 2-1/2" STAMPED ALUMINUM MONUMENT.

FOUND THE FOLLOWING WITNESSES:

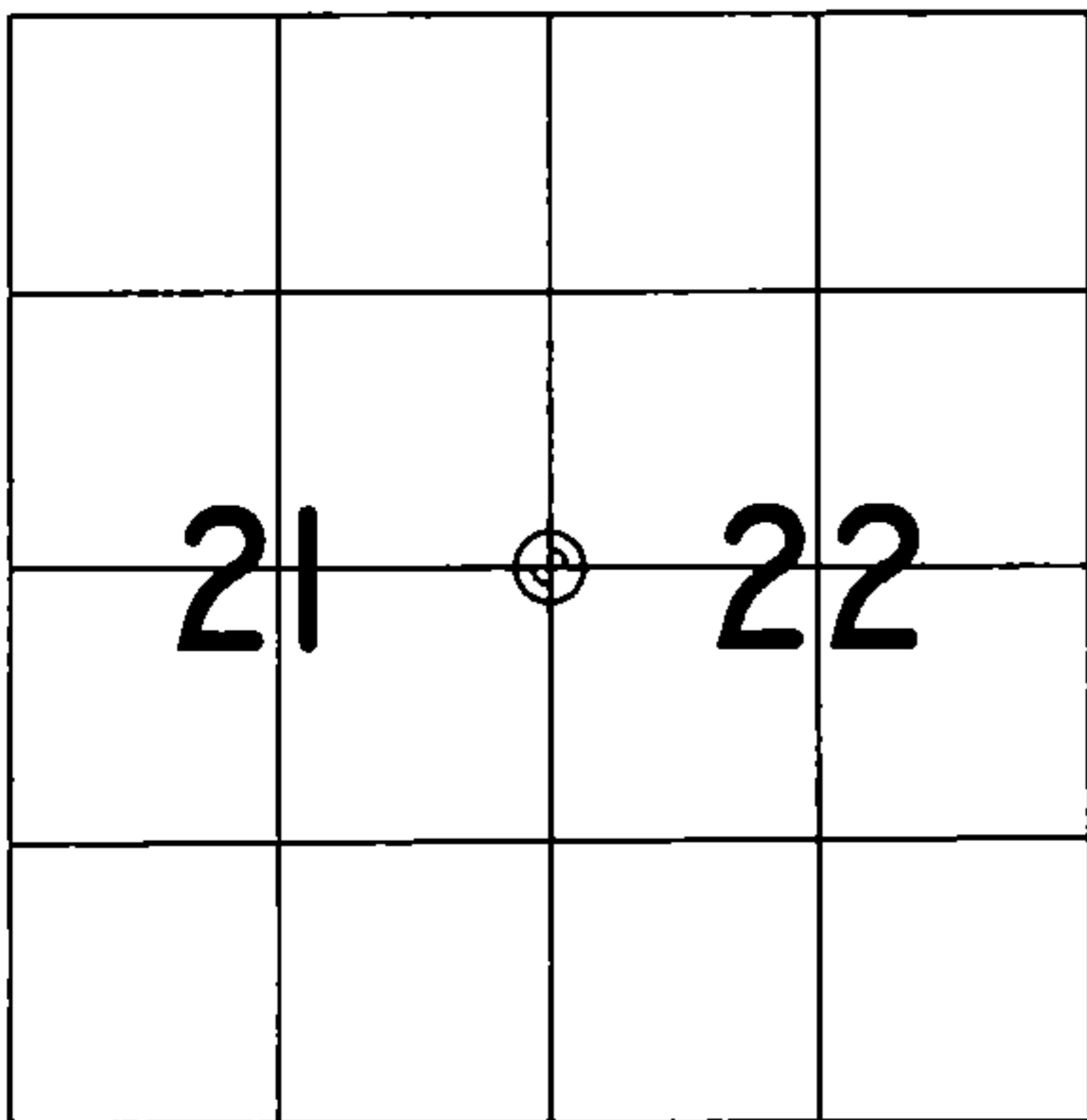
ASPEN 11" N44°E 12.64 FEET - SET A D.H. NAIL IN NW FACE OF TREE.
BLACK CHERRY 8" S14°W 46.75 FEET - FOUND NAIL IN EAST FACE OF TREE.
BLACK CHERRY 10" N30°W 22.67 FEET - FOUND NAIL IN SOUTH FACE OF TREE.
SIGN EAST 1.44 FEET

SET THE FOLLOWING WITNESSES:

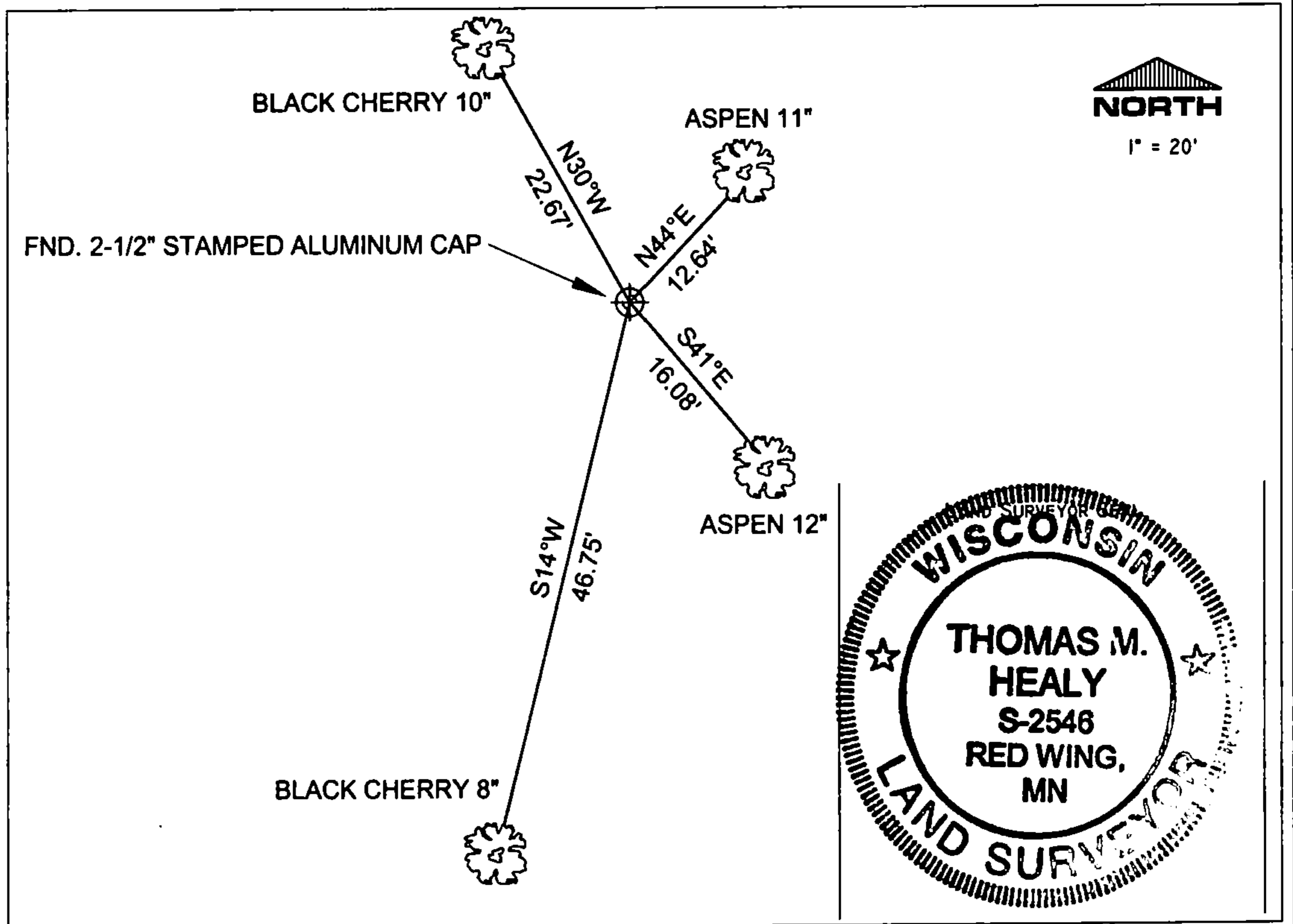
ASPEN 12" S41°E 16.08 FEET - SET D.H. NAIL IN NORTH FACE OF TREE.

ALL TREES HAVE CHEST & STUMP BLAZES. FOUND BT'S HAVE TAGS.

THE WEST 1/4
CORNER OF SECTION 22,
T. 34 N., R. 16 E.,
FOREST COUNTY, WISCONSIN



⊕ = LOCATION OF CORNER



I, THOMAS M. HEALY R.L.S. 2546

(TYPE OR PRINT NAME) CERTIFY THAT THE CORNER LOCATION SHOWN ON THIS ABOVE RECORD WAS DETERMINED BY ME OR UNDER MY DIRECTION AND CONTROL AND THAT THIS U.S. PUBLIC LAND SURVEY MONUMENT RECORD IS CORRECT AND COMPLETE TO THE BEST OF MY KNOWLEDGE AND BELIEF.

INDEX No. P-13

Thomas M. Healy 11-17-05
SIGNATURE DATE

43416212000

P-13