

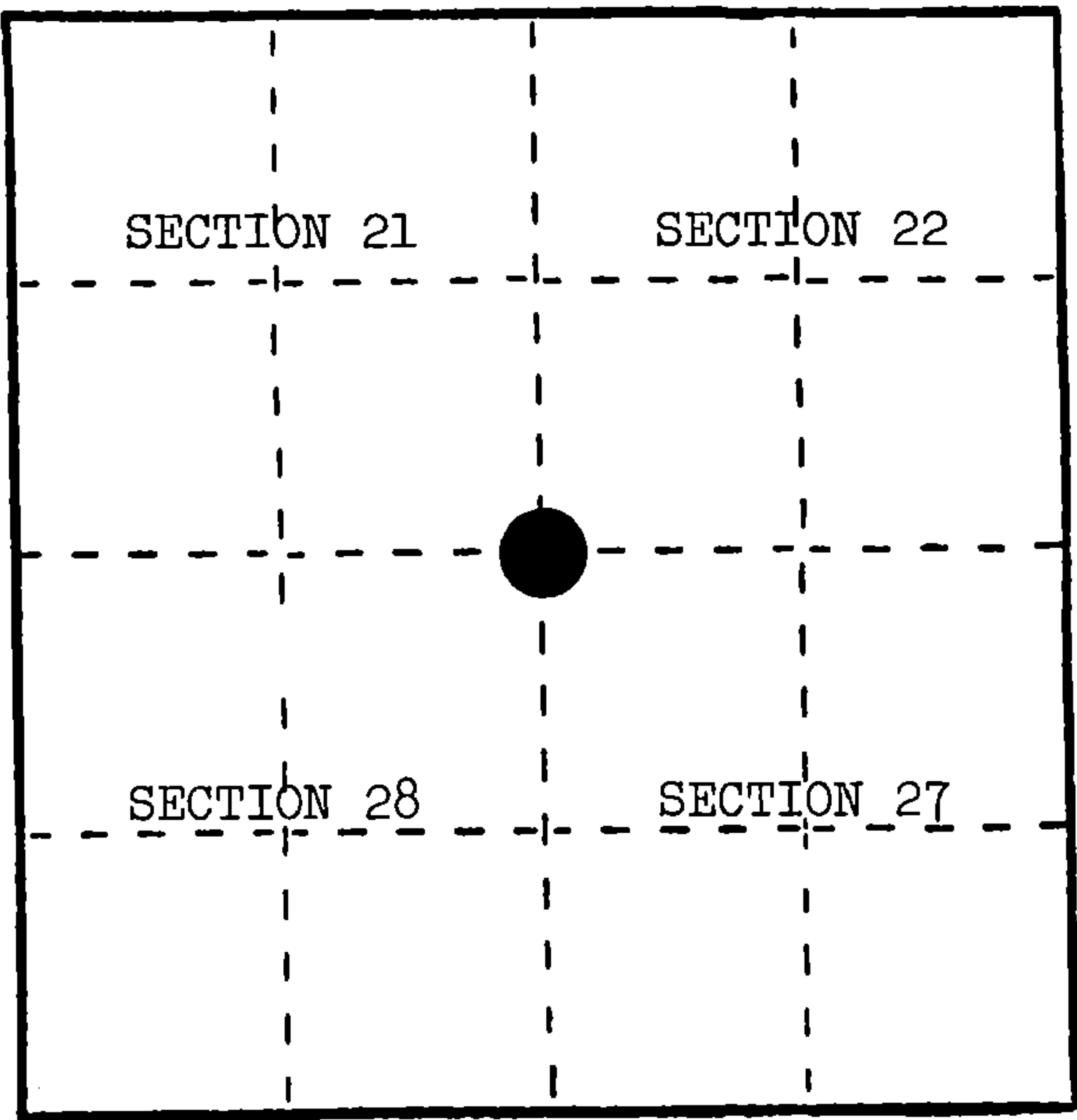
U. S. PUBLIC LAND SURVEY MONUMENT RECORD

INSTRUCTIONS: This record shall show the location of the corner and shall include all of the following nine elements (a through i).

(a) Identify the corner by reference to the U.S. public land survey system.

○ = Corner monument restored.

Section corner to Sections 21, 22, 27, and 28, T.34N., R.16E.



(b) Describe any record evidence, monument evidence, occupational evidence, testimonial evidence or any other material evidence you considered, and whether the monument was found or placed.

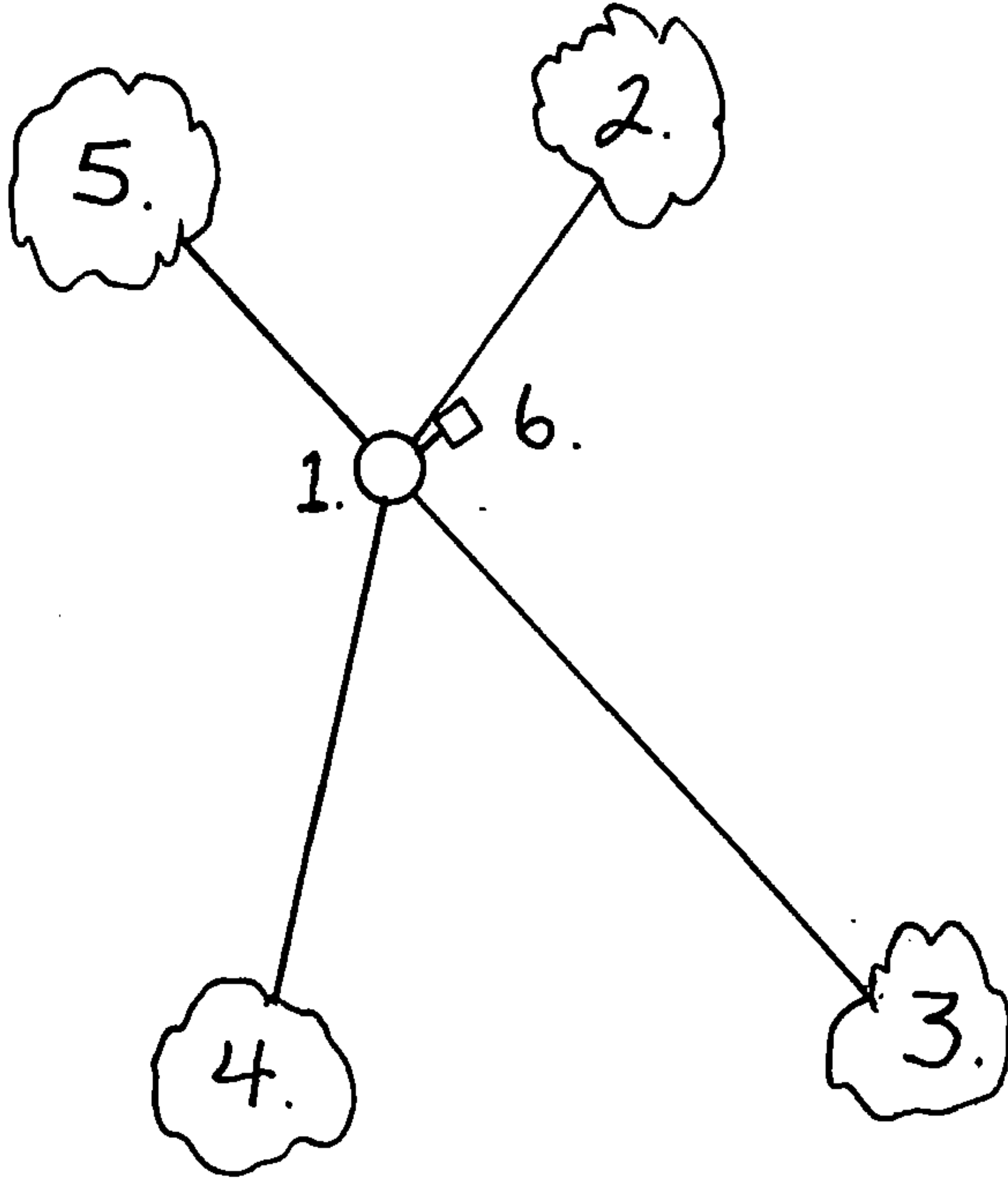
In 1858, James McBride set wood post with the following BTs: Sugar, 8", N.53°W., 25 links; Hemlock, 7", N.12°E., 47 links; Birch, 24", S.53°E., 65 links; Hemlock, 36", S.54°W., 53 links.

August 13, 1984, Alan Harrison set proportionate position and searched area. Found no evidence of corner location.

(c) In the plan view drawing below, provide reference ties to at least 4 witness monuments, or, if the location is within a municipality, to at least 2 witness monuments. (Witness monuments shall be made of concrete, natural stone, iron or other equally durable material.) Describe witness monuments.

(d) Show a plan view drawing depicting the relevant monuments and reference ties which is sufficient in detail to enable accurate relocation of the corner monument if the corner monument is disturbed. Indicate north.

- 1. 2" x 30" aluminum monument stamped to identify the corner.
- 2. Yellow Birch, 9", N.43°E., 13.06'
- 3. Sugar, 9", S.48°E., 30.02'
- 4. Yellow Birch, 5", S.17°W., 32.55'
- 5. Sugar, 7", N.48°W., 12.32'
- 6. Steel Sign Post, Northeast, 1.24'



REGISTER'S OFFICE  
Forest County, Wis.  
Received for record this 24th day  
of January A. D., 1985  
at 10:30 o'clock A. M. and  
recorded in Vol. CORNER RESTORATIONS  
on page R-13  
Paul Aschenbrenner  
REGISTER

- (e) Describe any material discrepancy between the location of the corner as restored or reestablished and the location of that corner as previously restored or reestablished by distance and direction. Show the discrepancy on the plan view drawing under (d), above. Show the distances between the corner as previously restored or reestablished and (1) the corner as restored or reestablished, and (2) to at least 2 of the witness monuments shown on the drawing in (d), above.

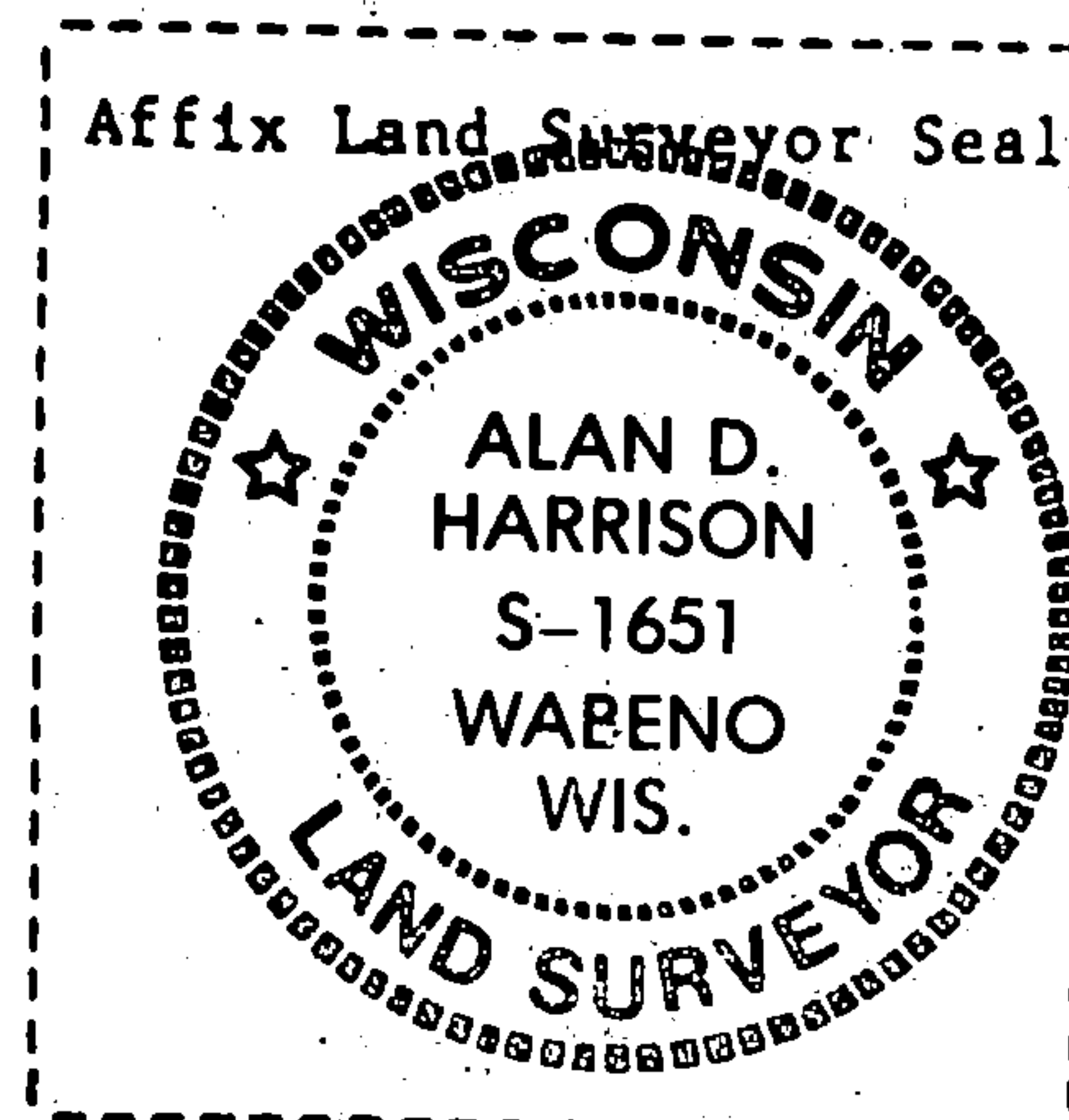
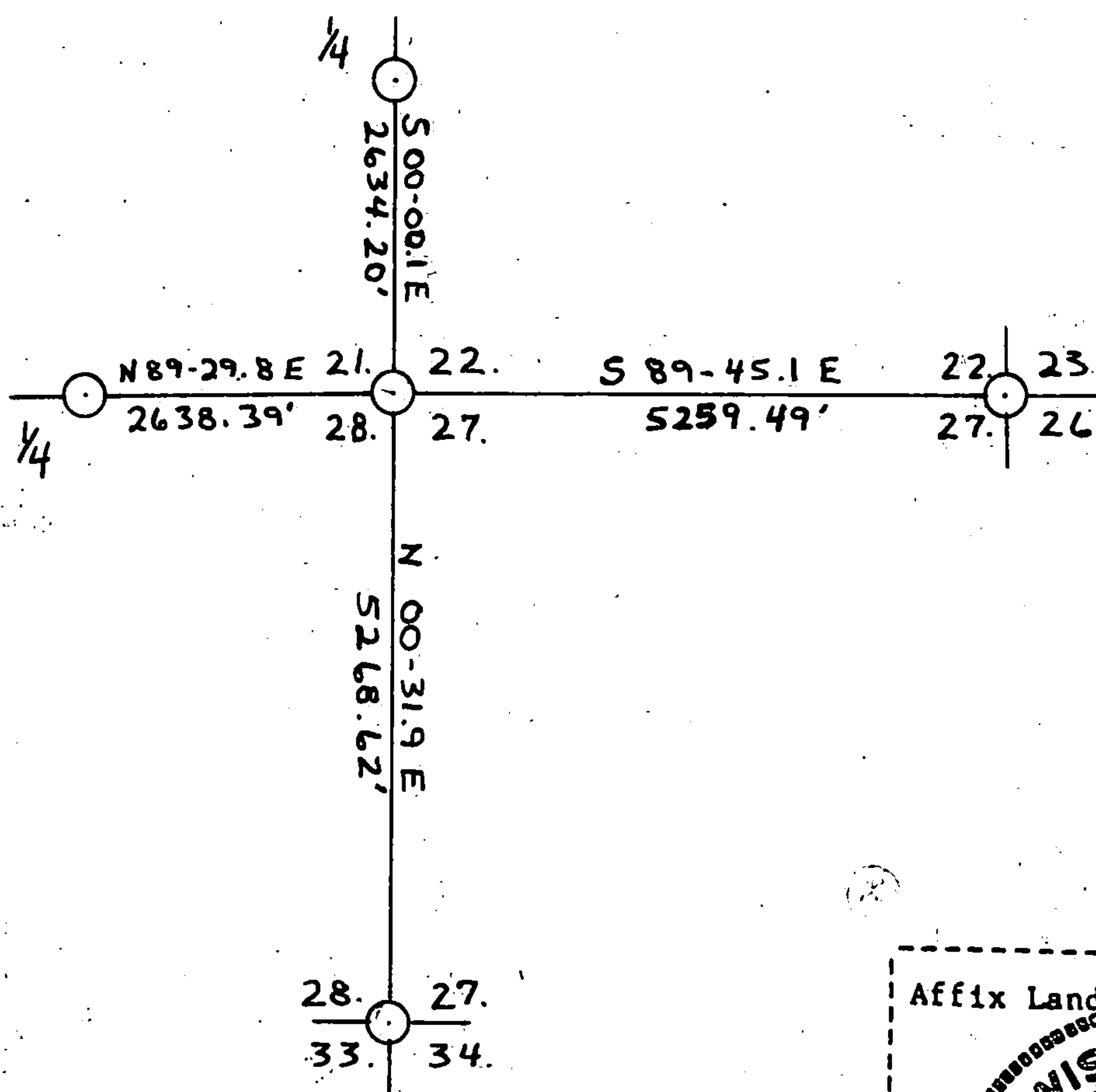
None.

- (f) Was the corner restored through acceptance of (1) an obliterated evidence location, or, (2) a found perpetuated location?

No.

- (g&h) Was the corner reestablished through lost corner proportionate methods? If so, show the method, including the directions and distances to other public land survey corners used as evidence or used for proportioning in determining the corner location?

Yes.



(1) I, Alan D. Harrison

(type or print name) certify that the corner location shown on this record was determined by me or under my direction and control and that this U.S. Public Land Survey Monument Record is correct and complete to the best of my knowledge and belief.

Alan D. Harrison 12/3/84  
Signature Date

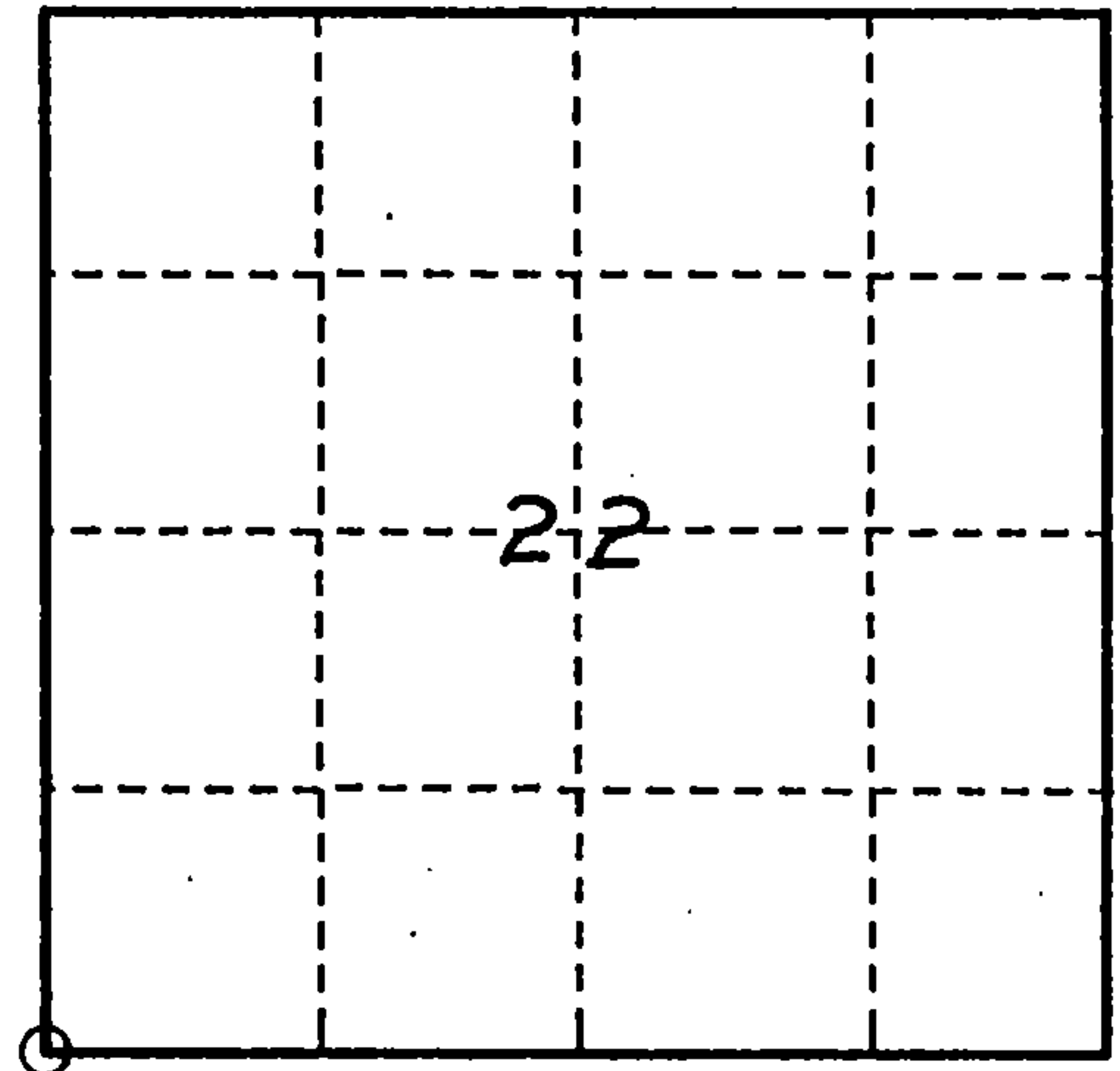
## U. S. PUBLIC LAND SURVEY MONUMENT RECORD

## INSTRUCTIONS:

This record shall show the location of the corner and shall include all of the following nine elements (a through i).

- (a) Identify the corner by reference to the U.S. public land survey system.  
 O = Corner monument restored.

SOUTHWEST CORNER OF SECTION 22, TWP. 34 N.,  
 R.16 E.



- (b) Describe any record evidence, monument evidence, occupational evidence, testimonial evidence or any other material evidence you considered, and whether the monument was found or placed.

1858 - ORIGINAL SURVEY BY McBRIDE, SET SECTION CORNER, B.Ts - SUGAR 8" N.53°W. 25 LKS., HEMLOCK 7" N.12°E. 47 LKS., BIRCH 24" S.53°E. 65 LKS., HEMLOCK 36" S.54°W. 53 LKS.

1984 - HARRISON R.L.S. NO. S-1651 SET 2" DIA. ALUMINUM MONUMENT AT CORNER, STEEL SIGN POST NE 1.24FT., B.Ts - YELLOW BIRCH 9" N.43°E. 13.06FT., SUGAR 9" S.48°E. 30.02FT., YELLOW BIRCH 5" S.17°W. 32.55FT., SUGAR 7" N.48°W. 12.32FT.

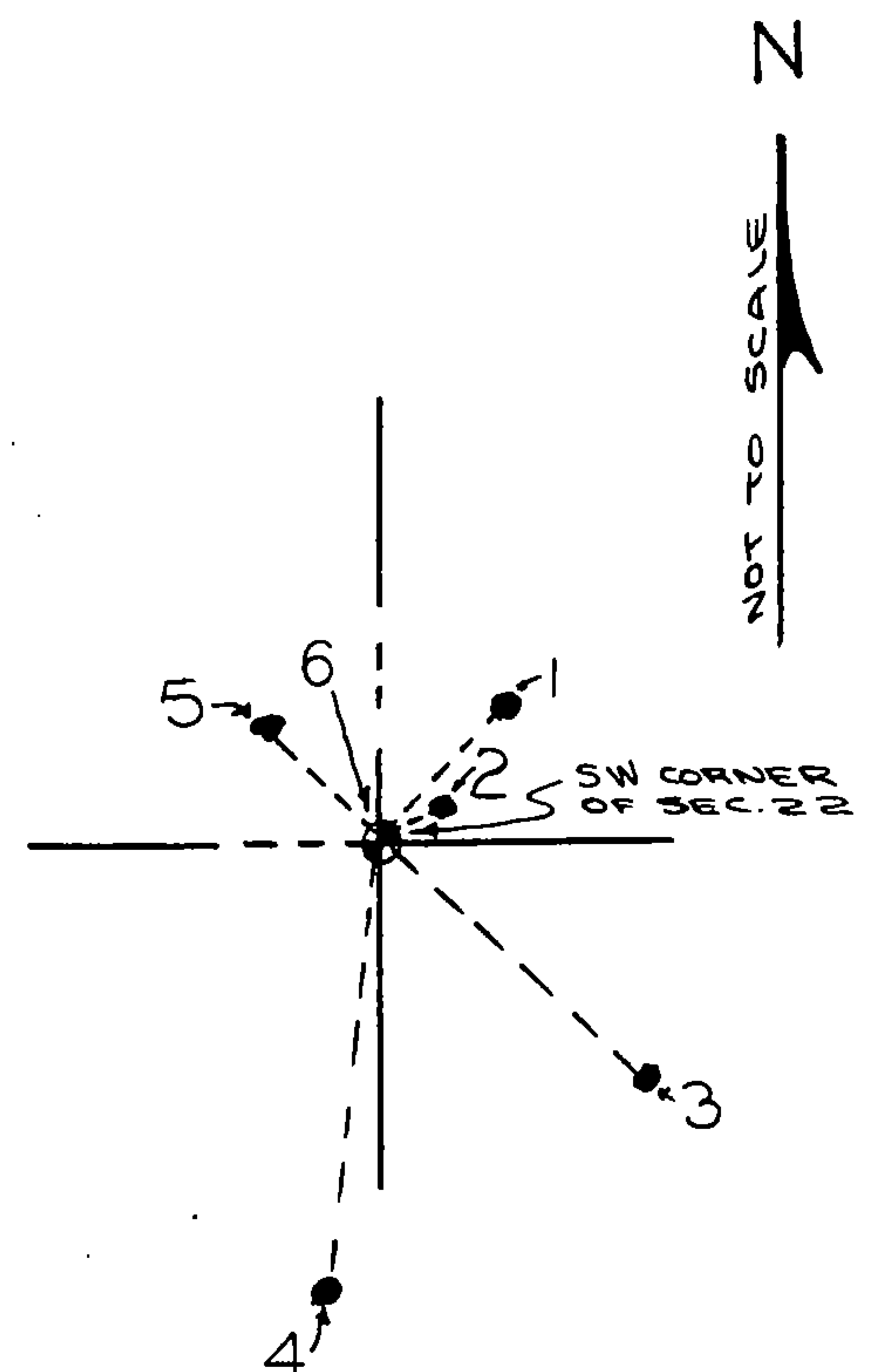
1993 - DOBBRATZ R.L.S. NO. S-973, FOUND MONUMENT, STEEL SIGN POST AND B.Ts EXCEPT YELLOW BIRCH 5" S.17°W. IS DOWN.

- (c) In the plan view drawing below, provide reference ties to at least 4 witness monuments, or, if the location is within a municipality, to at least 2 witness monuments. (witness monuments shall be made of concrete, natural stone, iron or other equally durable material.)

- (d) Show a plan view drawing depicting the relevant monuments and reference ties which is sufficient in detail to enable accurate relocation of the corner monument if the corner monument is disturbed. Indicate north.

WITNESS

1. B.T. YELLOW BIRCH 11" N.43°E. 13.06FT. (EXISTING)
2. STEEL SIGN POST NE 1.24FT. (EXISTING)
3. B.T. SUGAR 11" S.48°E. 29.89 (EXISTING)
4. B.T. YELLOW BIRCH 11" S.4°W. 37.10FT. (NEW)
5. B.T. SUGAR 9" N.48°W. 12.32FT. (EXISTING)
6. 2" DIA. ALUMINUM MONUMENT AT CORNER (EXISTING)



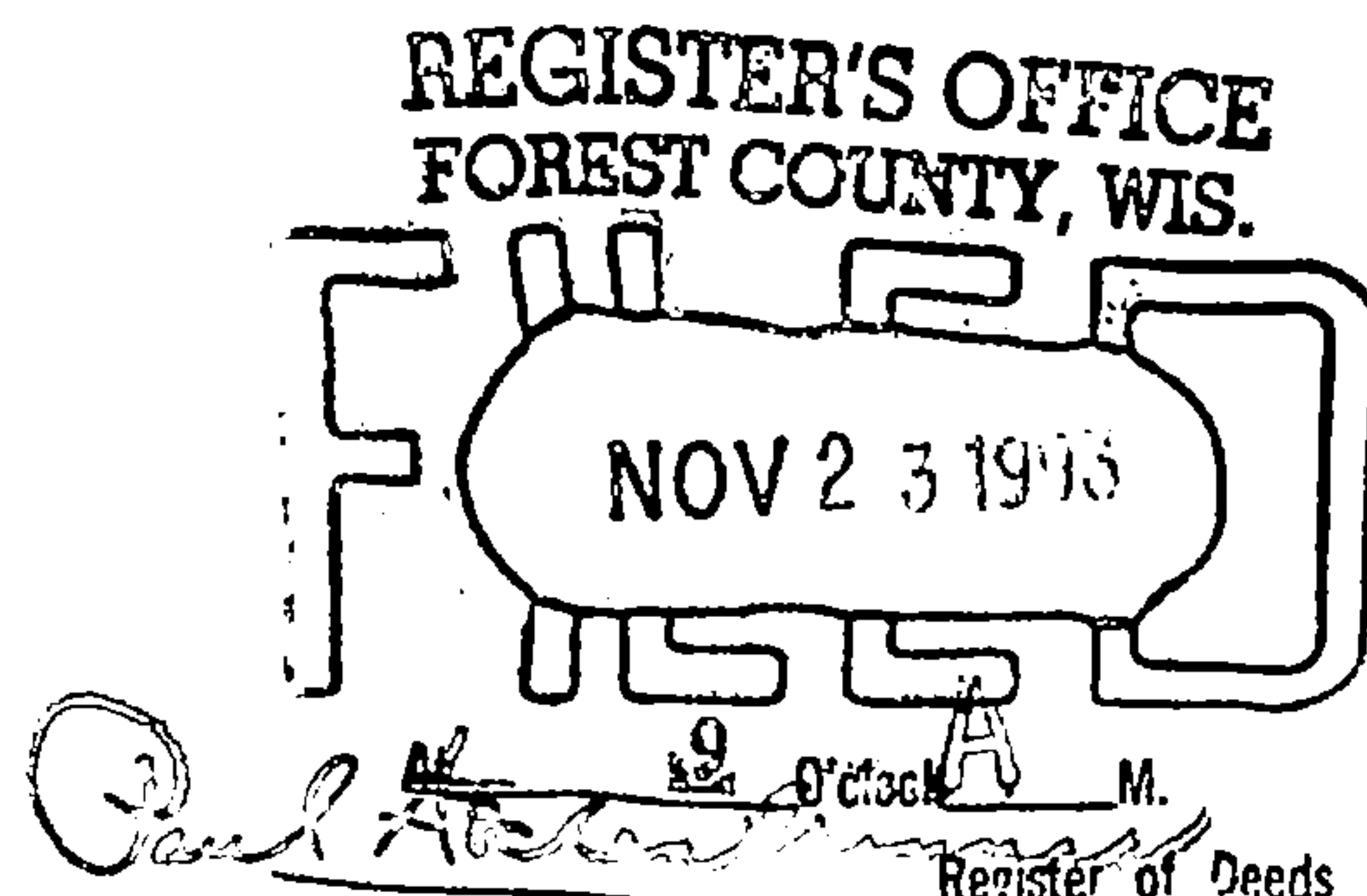


(e) Describe any material discrepancy between the location of the corner as restored or reestablished and the location of that corner as previously restored or reestablished by distance and direction. Show the discrepancy on the plan view drawing under (d), above. Show the distances between the corner as previously restored or reestablished and (1) the corner as restored or reestablished, and (2) to at least 2 of the witness monuments shown on the drawing in (d), above.

(f) Was the corner restored through acceptance of (1) an obliterated evidence location, or, (2) a found perpetuated location?

(2)

(g & h) Was the corner reestablished through lost corner proportionate methods? If so, show the method, including the directions and distances to other public land survey corners used as evidence or used for proportioning in determining the corner location?



(1) I, WAYNE G. DOBBRATZ

(type or print name) certify that the corner location shown on this record was determined by me or under my direction and control and that this U.S. Public Land Survey Monument Record is correct and complete to the best of my knowledge and belief.

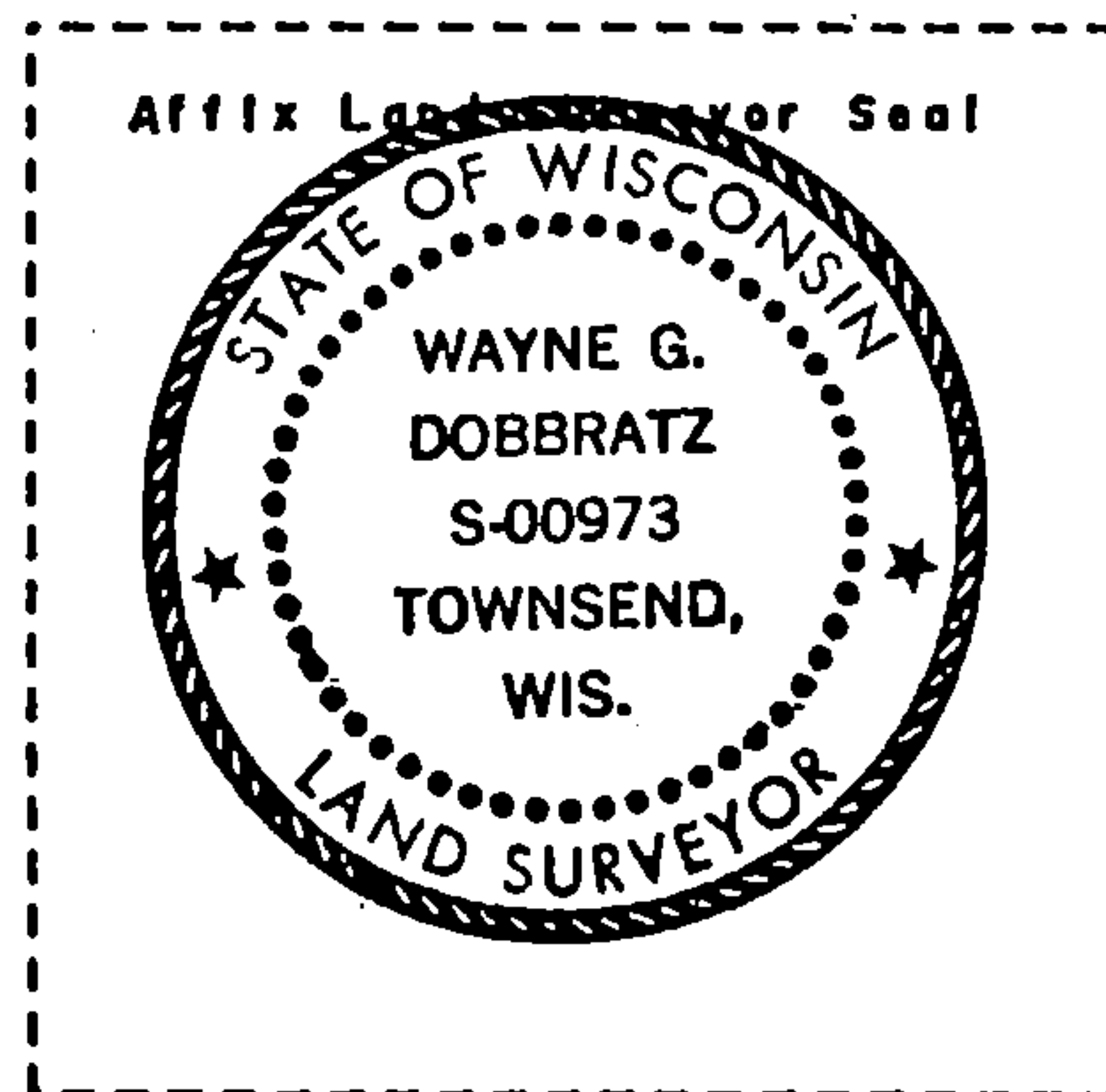
Signature

8/8/93

Date

CERTIFICATE READY FOR FILING:

Ralph A. Johnson 11-5-93  
Acting District Ranger



Document Number

189326

REGISTER'S OFFICE  
Forest County, Wis.  
Received for record this 18<sup>th</sup> day  
of November A.D., 2005 at  
3:55 o'clock P.M. and recorded  
in Vol. Corner Restoration  
page R-13  
Kay Swanson, Deputy  
Register of Deeds

U.S. PUBLIC LAND SURVEY MONUMENT RECORD

(AS REQUIRED BY S. A-E 5.02, WI ADM. CODE)

HISTORY OF ORIGINAL CORNER ESTABLISHMENT AND SUBSEQUENT RESTORATIONS AND DESCRIPTION OF ANY RECORD, MONUMENT, OCCUPATIONAL, TESTIMONIAL, OR OTHER EVIDENCE CONSIDERED:

1858 - JAMES McBRIDE, SURVEYOR, SET POST

SET THE FOLLOWING WITNESSES:  
SUGAR MAPLE 8" N53°W 25 LINKS  
HEMLOCK 7" N12°E 47 LINKS  
BIRCH 24" S53°E 65 LINKS  
HEMLOCK 36" S54°W 53 LINKS

1984 - ALAN HARRISON, SURVEYOR, S-1651, SEARCHED AREA AND FOUND NO EVIDENCE OF CORNER POSITION. SET A 2" X 30" ALUMINUM MONUMENT w/STAMPED CAP AT THE PROPORTIONATE POSITION.

SET THE FOLLOWING WITNESSES:  
YELLOW BIRCH 9" N43°E 13.06 FEET  
SUGAR MAPLE 9" S48°E 30.02 FEET  
YELLOW BIRCH 5" S17°W 32.55 FEET  
SUGAR MAPLE 7" N48°W 12.32 FEET  
STEEL SIGN POST NE 1.24 FEET

CORNER WAS: (CHECK ALL THAT APPLY)

- ☐ RESTORED THROUGH ACCEPTANCE OF AN OBLITERATED LOCATION  
☒ RESTORED THROUGH ACCEPTANCE OF A FOUND PERPETUATED LOCATION  
☐ CONSIDERED A LOST CORNER AND REESTABLISHED THROUGH LOST CORNER PROPORTIONATE METHODS (INCLUDING A PLAN VIEW DRAWING SHOWING DISTANCES AND DIRECTIONS TO OTHER PUBLIC LAND SURVEY CORNERS USED FOR PROPORTIONING AND DETERMINING THE CORNER LOCATION)  
☐ RESTORED OF REESTABLISHED IN A LOCATION THAT DIFFERS FROM A PREVIOUS RESTORATION OF REESTABLISHMENT (INCLUDE A PLAN VIEW DRAWING AND INDICATE WHAT WAS SET AND/OR FOUND)

DESCRIBE THE MONUMENT AND ACCESSORIES USED TO PERPETUATE THE LOCATION OF THIS CORNER. (INCLUDE A PLAN VIEW DRAWING AND INDICATE WHAT WAS SET AND/OR FOUND)

FOUND A 2.5" STAMPED ALUMINUM MONUMENT.

FOUND THE FOLLOWING WITNESSES:

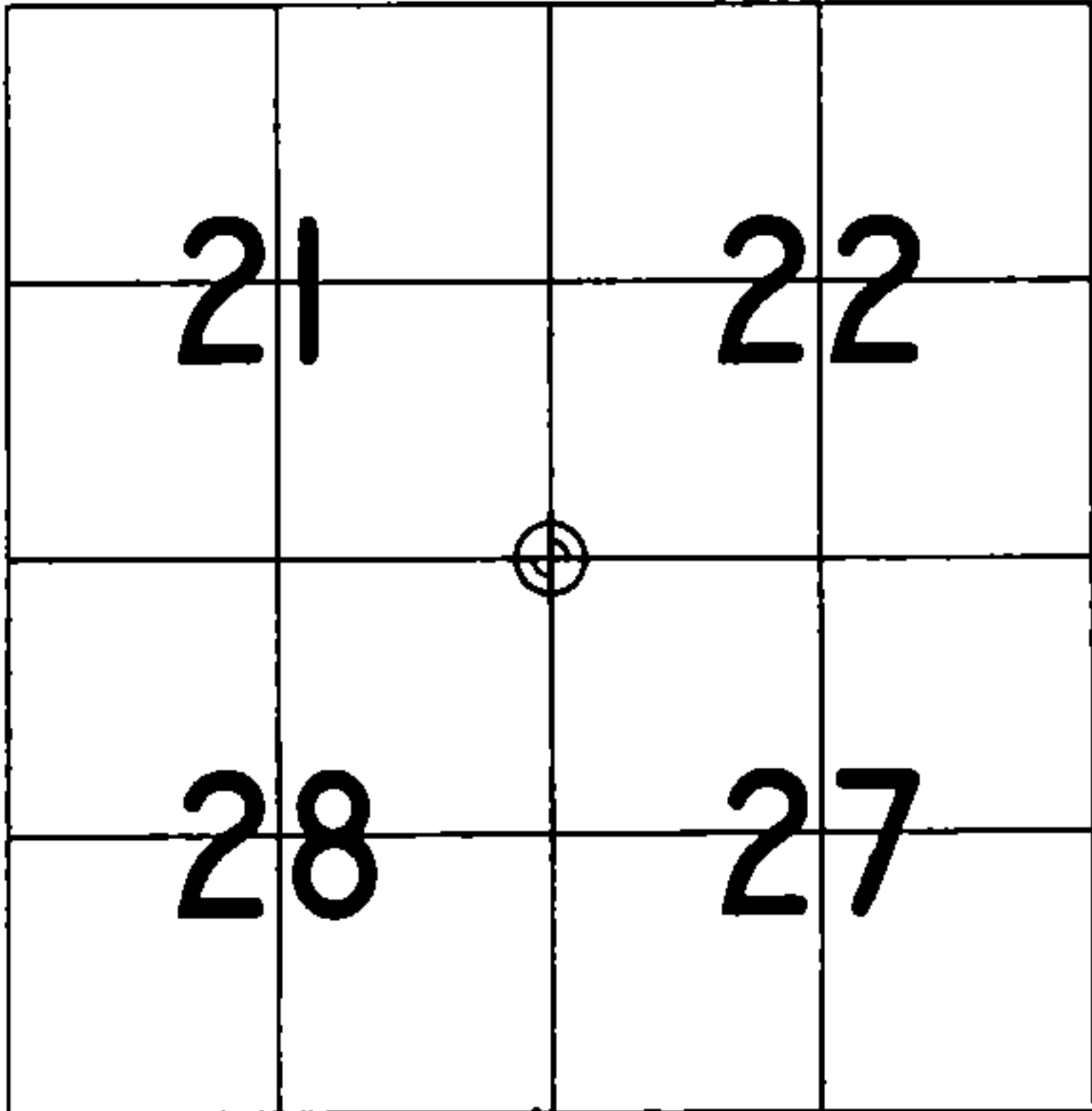
YELLOW BIRCH 12" N40°E 13.11 FEET - FOUND NAIL IN WEST FACE OF TREE.  
MAPLE 14" S49°E 29.95 FEET - FOUND NAIL IN NORTH FACE OF TREE.  
MAPLE 12" N47°W 12.40 FEET - SET D.H. NAIL IN SOUTH FACE OF TREE.

SET THE FOLLOWING WITNESSES:

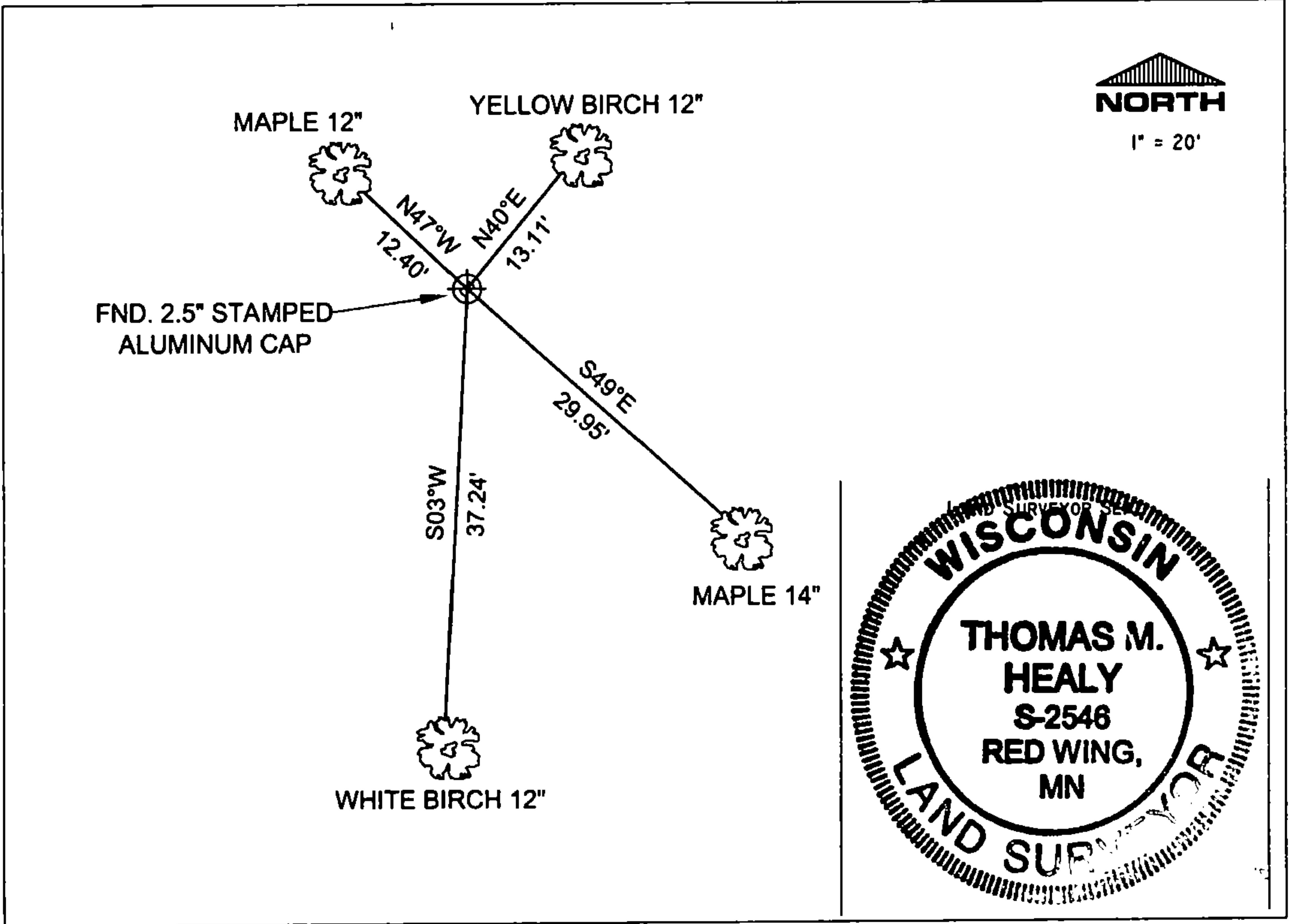
WHITE BIRCH 12" S03°W 37.24 FEET - SET D.H. NAIL IN WEST FACE OF TREE.

ALL TREES HAVE CHEST & STUMP BLAZES AND TAGS.  
STEEL SIGN NORTH.

THE SOUTHWEST  
CORNER OF SECTION 22,  
T. 34 N., R. 16 E.,  
FOREST COUNTY, WISCONSIN



⊕ = LOCATION OF CORNER



I, THOMAS M. HEALY R.L.S. 2546

(TYPE OR PRINT NAME) CERTIFY THAT THE CORNER LOCATION SHOWN ON THIS ABOVE RECORD WAS DETERMINED BY ME OR UNDER MY DIRECTION AND CONTROL AND THAT THIS U.S. PUBLIC LAND SURVEY MONUMENT RECORD IS CORRECT AND COMPLETE TO THE BEST OF MY KNOWLEDGE AND BELIEF.

THM. Healy 11-8-05  
SIGNATURE DATE

INDEX No. R-13

4341621 0000

R-13