

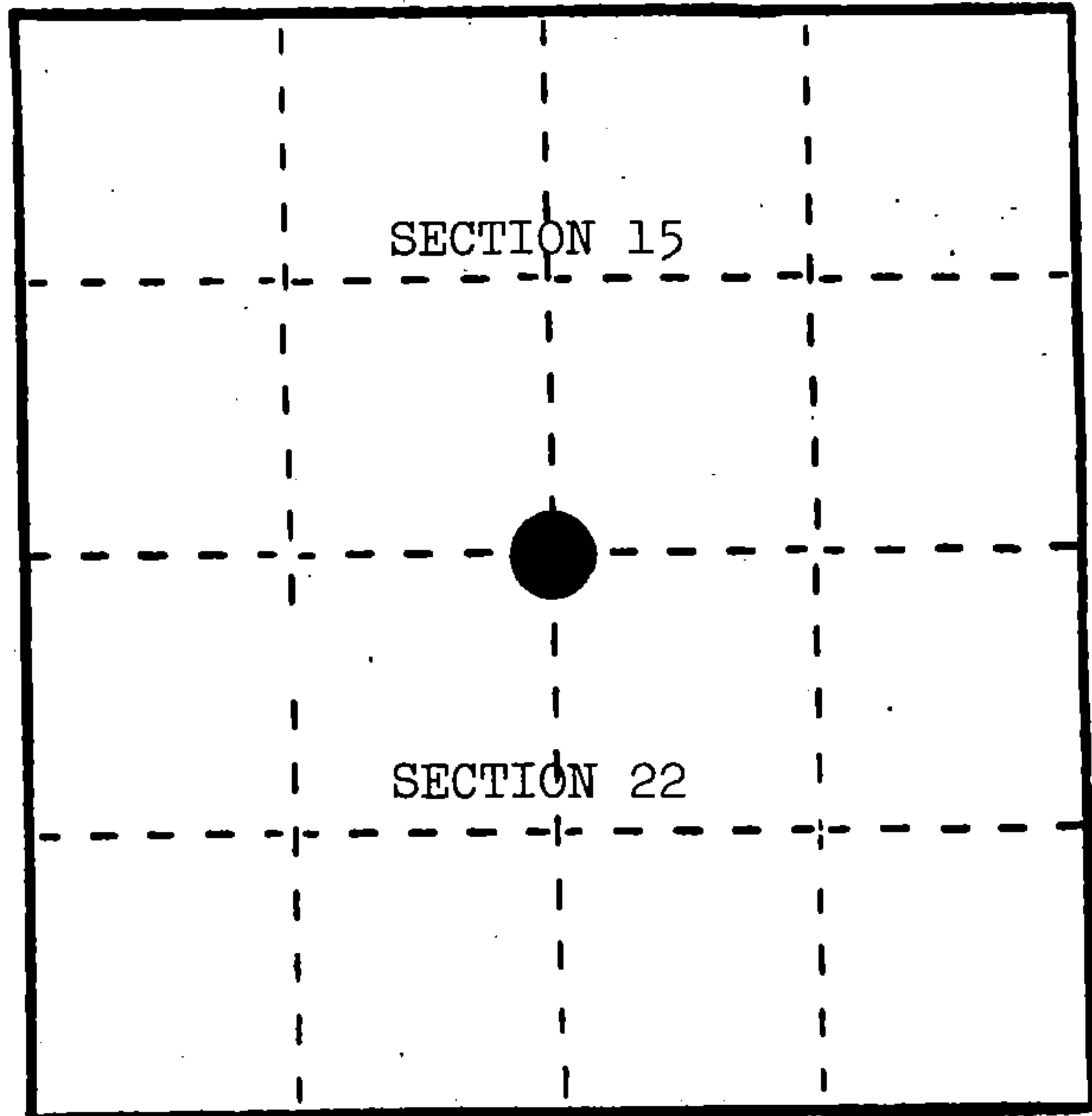
U. S. PUBLIC LAND SURVEY MONUMENT RECORD

INSTRUCTIONS: This record shall show the location of the corner and shall include all of the following nine elements (a through i).

(a) Identify the corner by reference to the U.S. public land survey system.

○ = Corner monument restored.

Quarter corner to Sections 15 and 22, T.34N., R.16E., Forest County, Wisconsin.



(b) Describe any record evidence, monument evidence, occupational evidence, testimonial evidence or any other material evidence you considered, and whether the monument was found or placed.

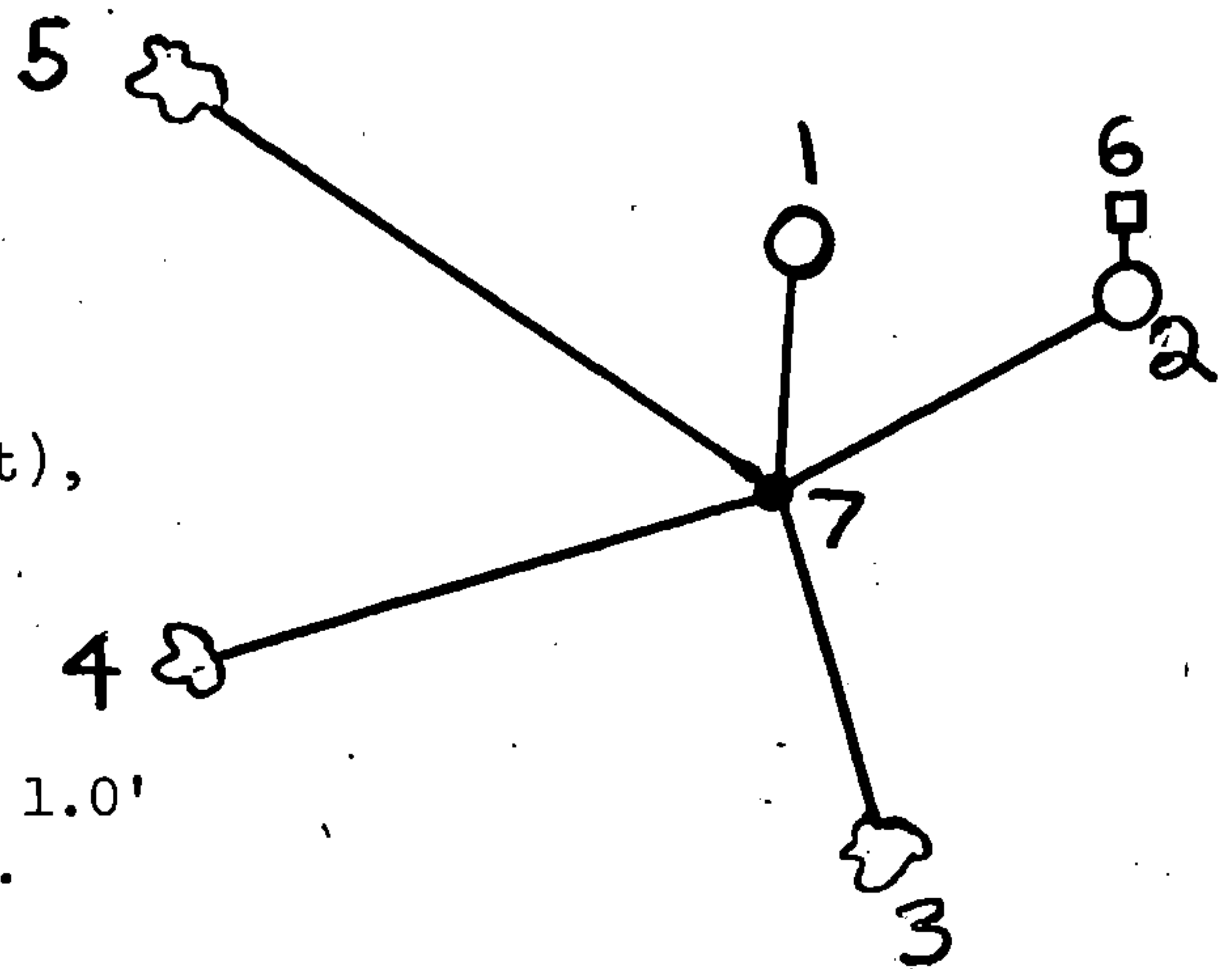
In 1858, James McBride set post 40.00 chains, with the following BTs: Birch, 6", S.74°E., 32 links; Sugar, 12", N.63°E., 25 links.

December, 1934, Priegel Truck Route #341 survey called corner in centerline of County Highway "C" with fence north.

September 29, 1983, Milo Stefan found this position to fit within 1' of midpoint east and west, and placed a railroad spike in centerline of said highway.

(c) In the plan view drawing below, provide reference ties to at least 4 witness monuments, or, if the location is within a municipality, to at least 2 witness monuments. (Witness monuments shall be made of concrete, natural stone, iron or other equally durable material.) Describe witness monuments.

(d) Show a plan view drawing depicting the relevant monuments and reference ties which is sufficient in detail to enable accurate relocation of the corner monument if the corner monument is disturbed. Indicate north.



1. Power Pole #3416-15R15, N.5°E., 29.51'
2. Reference Corner (2" x 36" aluminum monument), N.51°E., 39.98'
3. Sugar Maple, 10", S.8°E., 37.62'
4. Sugar Maple, 8", S.64°W., 75.13'
5. Sugar Maple, 6", N.46°W., 84.08'
6. Steel Sign Post, North of Reference Corner, 1.0'
7. Railroad spike marking the corner locations.

REGISTER'S OFFICE }
 Forest County, Wis. }
 Received for record this 24th day
 of January, 1985 A. D., at
 10:30 o'clock A. M. and

recorded in Vol. **CORNER RESTORATIONS**
 on page **N-15**
Paul Aschenbrenner
 REGISTER

(e) Describe any material discrepancy between the location of the corner as restored or reestablished and the location of that corner as previously restored or reestablished by distance and direction. Show the discrepancy on the plan view drawing under (d), above. Show the distances between the corner as previously restored or reestablished and (1) the corner as restored or reestablished, and (2) to at least 2 of the witness monuments shown on the drawing in (d), above.

None.

(f) Was the corner restored through acceptance of (1) an obliterated evidence location, or, (2) a found perpetuated location?

(1) an obliterated evidence location.

(g&h) Was the corner reestablished through lost corner proportionate methods? If so, show the method, including the directions and distances to other public land survey corners used as evidence or used for proportioning in determining the corner location?

No.

Milo E. Stefan

(1) I, Milo E. Stefan
(type or print name) certify that the corner location shown on this record was determined by me or under my direction and control and that this U.S. Public Land Survey Monument Record is correct and complete to the best of my knowledge and belief.

Milo E. Stefan
Signature

11/30/84
Date

Affix Land Surveyor Seal

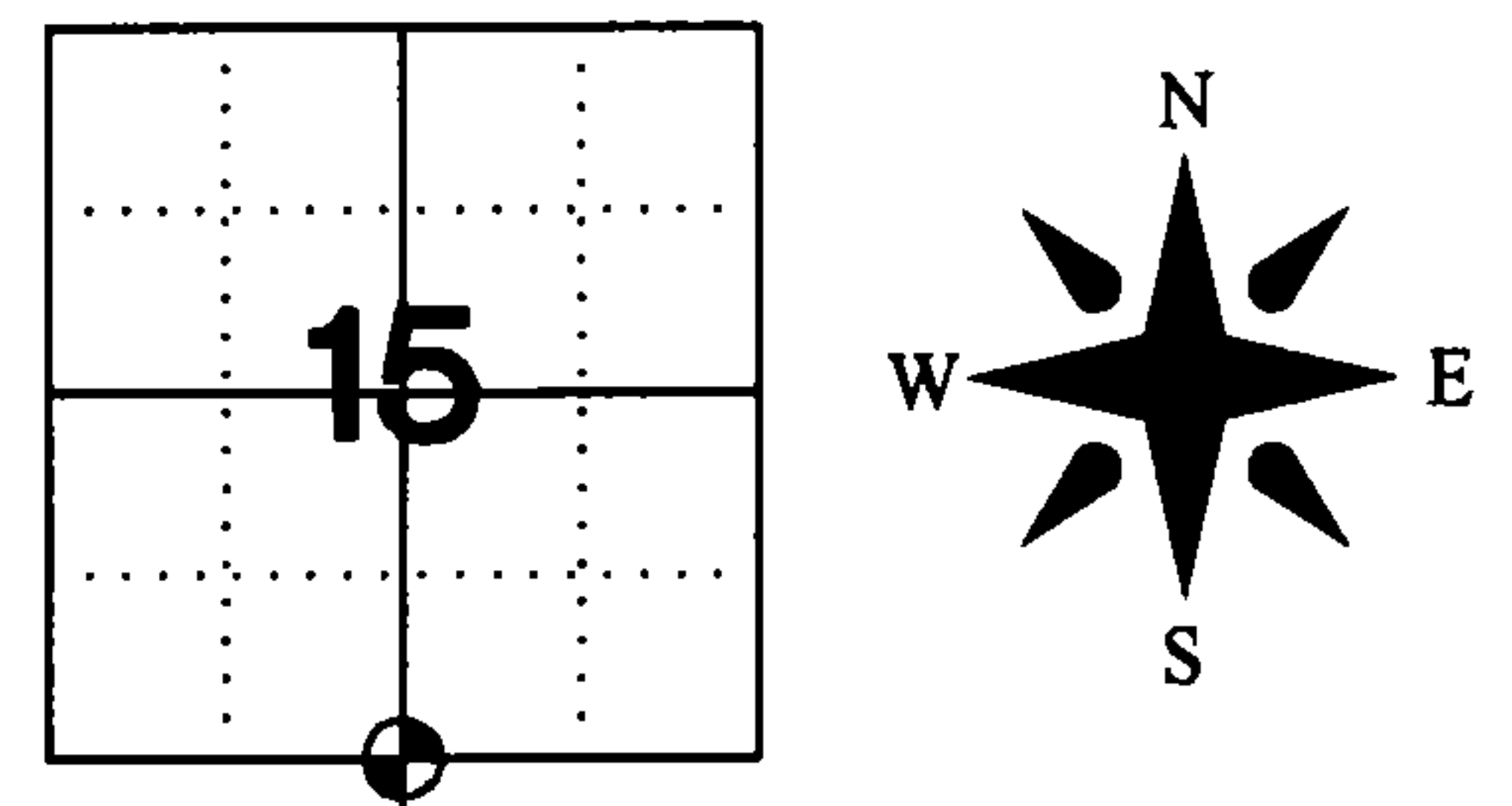


Document Number
209976

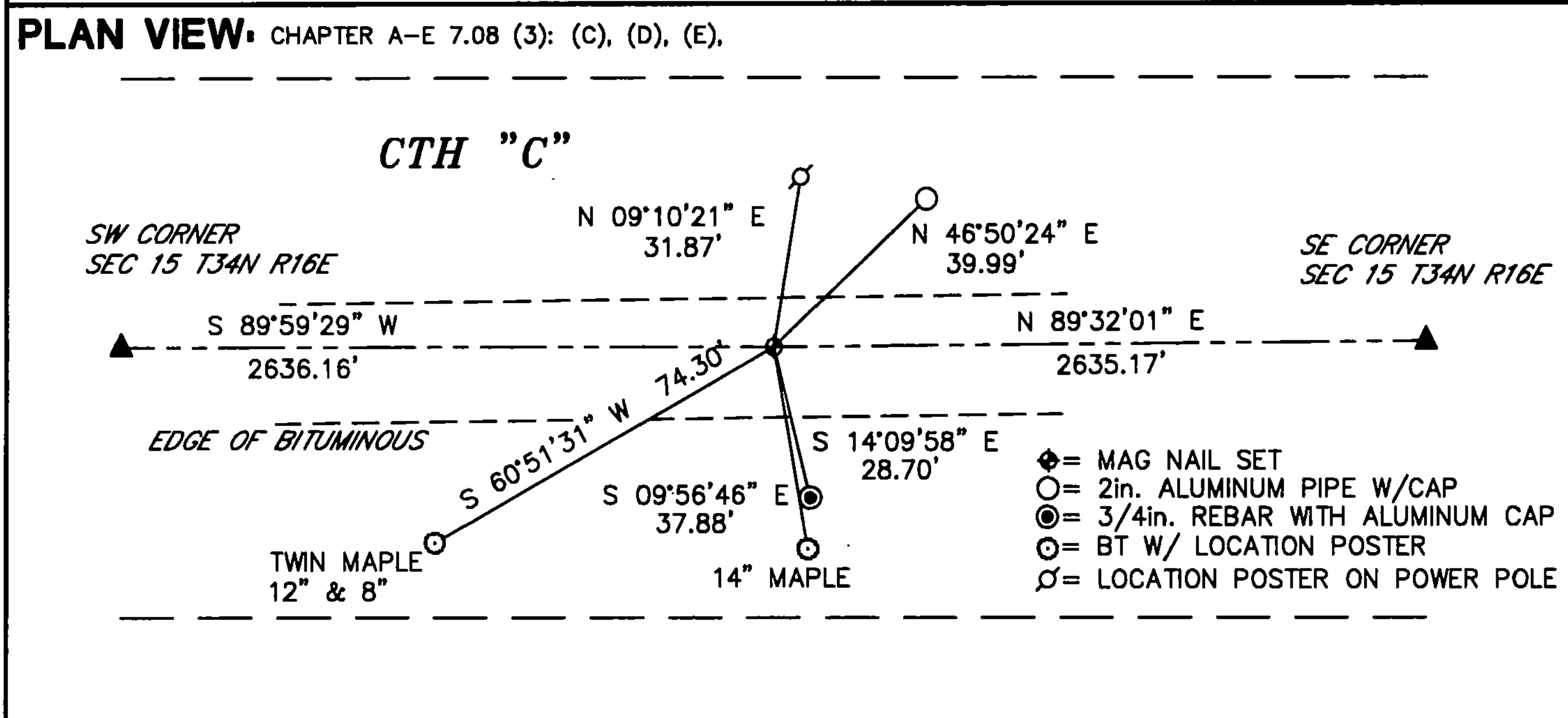
REGISTER'S OFFICE
Forest County, Wis.
Received for record this 17th day
of September A.D., 2012 at
9:10 o'clock A. M. and recorded
in Vol. OWNER RESTORATION
page N-15
Christy McBride Dwyer
Register of Deeds

U.S. PUBLIC LAND SURVEY MONUMENT RECORD CORNER NO. N15
FOREST COUNTY, WISCONSIN
IN ACCORDANCE WITH WISCONSIN ADMINISTRATIVE CODE, CHAPTER A-E 7.08 (3) (A)-(I)

LOCATION: CHAPTER A-E 7.08 (3): (A)
SECTION 15 TOWNSHIP 34 NORTH, RANGE 16 EAST
TYPE OF CORNER: SOUTH QUARTER CORNER
TYPE OF MONUMENT: MAG NAIL OVER 3/4in. REBAR
WITH ALUMINUM CAP
HORIZONTAL DATUM: NAD 83(2007) GRID
FOREST COUNTY COORDINATES
NORTHING: 515982.737
EASTING: 944907.092



RECOVERY PROCEDURES: CHAPTER A-E 7.08 (3): (B), (F), (G), (H)
1858, JAMES McBRIDE SET POST 40.00 CHAINS, WITH THE FOLLOWING BTS: BIRCH 6" S 74° E 32 LINKS; SUGAR 12" N 63° E 25 LINKS
DECEMBER 1934 PRIEGEL TRUCK ROUTE #341 SURVEY CALLED CORNER IN CENTERLINE OF COUNTY HIGHWAY "C" WITH FENCE NORTH
SEPTEMBER 29 1983, MILO STEFAN FOUND THIS POSITION TO FIT WITHIN 1' OF MIDPOINT EAST AND WEST, AND PLACED A RAILROAD SPIKE IN CENTERLINE OF HIGHWAY.
7 JUNE 2012; PRIOR TO HIGHWAY "C" RESURFACE PROJECT FOUND NO MONUMENT AT CORNER
30 JULY 2012: SET 3/4in. X 24in. REBAR 1.50lbs/ft. WITH ALUMINUM CAP BELOW BITUMINOUS USING WITNESS MONUMENT AND SECTION CORNERS FROM SURVEY BY RLS 1651 DATED 1984
SET MAG NAIL OVER 3/4in. REBAR AFTER COMPLETION OF ROAD WORK



SURVEYOR'S CERTIFICATE: CHAPTER 7.08 (3): (I)
THE UNDERSIGNED HEREBY CERTIFIES THAT THE U.S. PUBLIC LAND SURVEY MONUMENT RECORD IS CORRECT AND COMPLETE TO THE BEST OF MY KNOWLEDGE AND BELIEF.

Darren B. Krzanowski
DARREN B. KRZANOWSKI
WISCONSIN LAND SURVEYOR S-2663
DATED THIS 2ND DAY OF AUGUST 2012



43416 150020

N15