

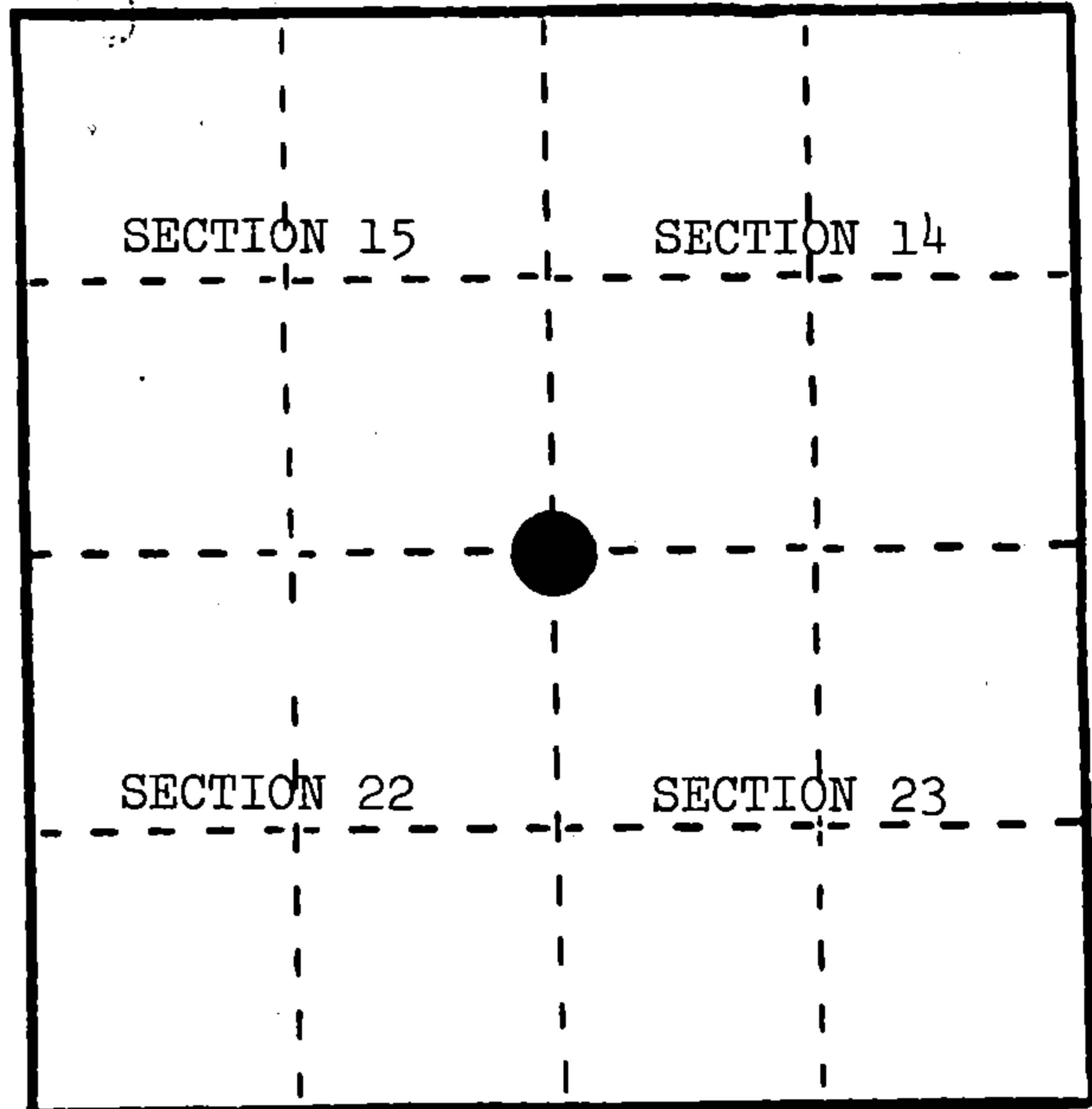
U. S. PUBLIC LAND SURVEY MONUMENT RECORD

INSTRUCTIONS: This record shall show the location of the corner and shall include all of the following nine elements (a through i).

(a) Identify the corner by reference to the U.S. public land survey system.

○ = Corner monument restored.

Section corner to Sections 14, 15, 22, and 23, T.34N., R.16E., Forest County, Wisconsin.



(b) Describe any record evidence, monument evidence, occupational evidence, testimonial evidence or any other material evidence you considered, and whether the monument was found or placed.

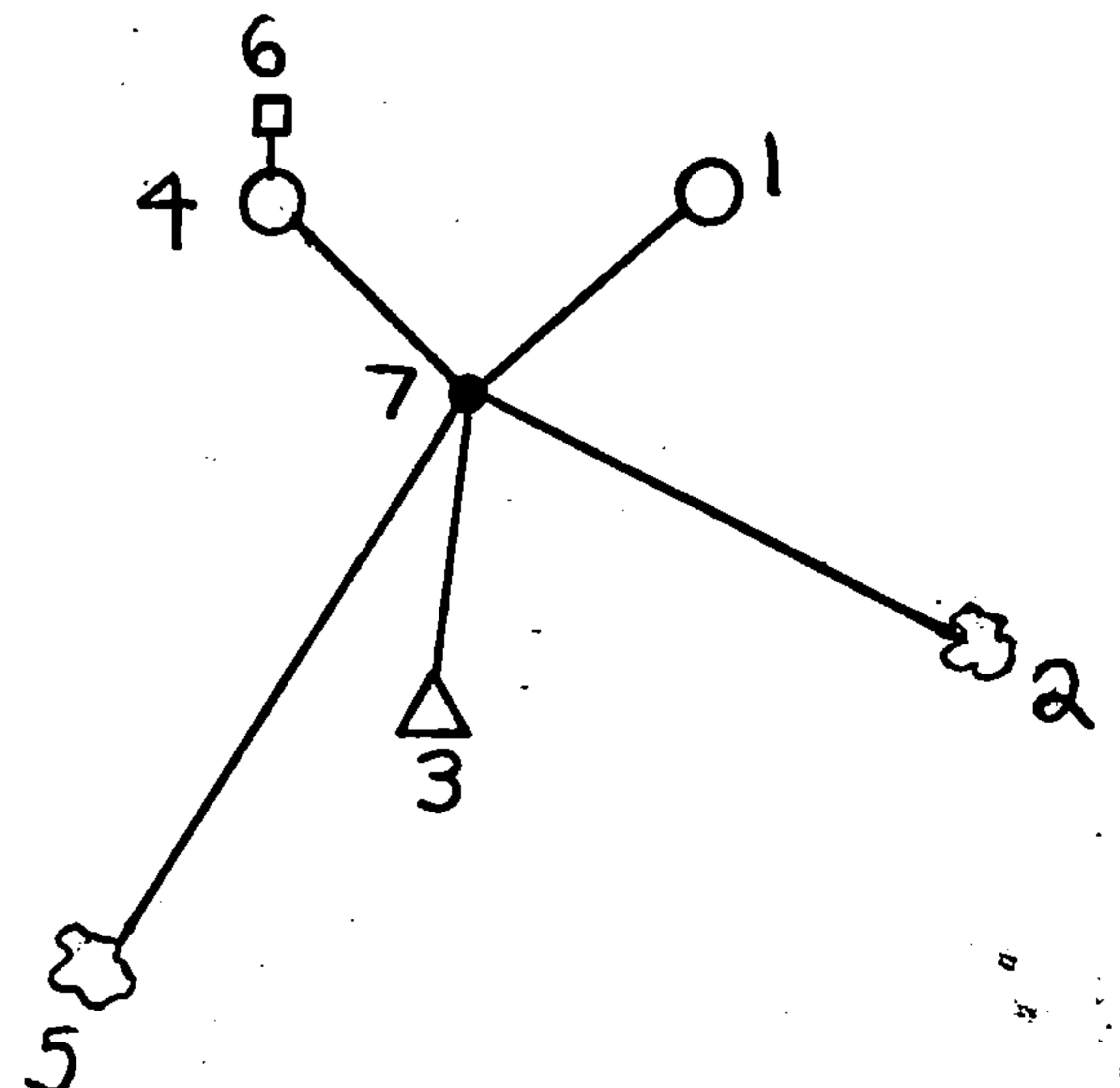
In 1858, James McBride set post at 80.00 chains, with the following BTs: Hemlock, 30", N.63°E., 62 links; Birch, 14", S.48°E., 28 links; Sugar, 30", S.59°W., 46 links; Birch, 7", N.72°W., 29 links.

October 25, 1983, corner position restored at the intersection of the centerlines of County Trunk "C" and Bay Shore Farm Road--marked by a railroad spike.

(c) In the plan view drawing below, provide reference ties to at least 4 witness monuments, or, if the location is within a municipality, to at least 2 witness monuments. (Witness monuments shall be made of concrete, natural stone, iron or other equally durable material.) Describe witness monuments.

(d) Show a plan view drawing depicting the relevant monuments and reference ties which is sufficient in detail to enable accurate relocation of the corner monument if the corner monument is disturbed. Indicate north.

1. Power Pole #3416-14L9, N.54°E., 43.29'
2. Aspen, 6", S.52°E., 86.78'
3. USGS Benchmark #17 W.R.M., S.01°W., 52.44'
4. Reference Corner (2" x 36" aluminum monument), N.35°W., 39.87'
5. Black Cherry, 6", S.38°W., 124.30'
6. Steel Sign Post, North of Reference Monument, 1.0'
7. Railroad spike marking corner location.



REGISTER'S OFFICE }
Forest County, Wis. }

Received for record this 24th day
of January A.D., 1985 at

10:30 o'clock A. M. and

recorded in Vol. CORNER RESTORATIONS

on page N-17
Paul A. Schenbrenner
REGISTER

(e) Describe any material discrepancy between the location of the corner as restored or reestablished and the location of that corner as previously restored or reestablished by distance and direction. Show the discrepancy on the plan view drawing under (d), above. Show the distances between the corner as previously restored or reestablished and (1) the corner as restored or reestablished, and (2) to at least 2 of the witness monuments shown on the drawing in (d), above.

None.

(f) Was the corner restored through acceptance of (1) an obliterated evidence location, or, (2) a found perpetuated location?

(1) an obliterated evidence location.

(g&h) Was the corner reestablished through lost corner proportionate methods? If so, show the method, including the directions and distances to other public land survey corners used as evidence or used for proportioning in determining the corner location?

No.

(i) I, Milo E. Stefan
(type or print name) certify that the corner location shown on this record was determined by me or under my direction and control and that this U.S. Public Land Survey Monument Record is correct and complete to the best of my knowledge and belief.

Milo E. Stefan
Signature

11/30/84
Date

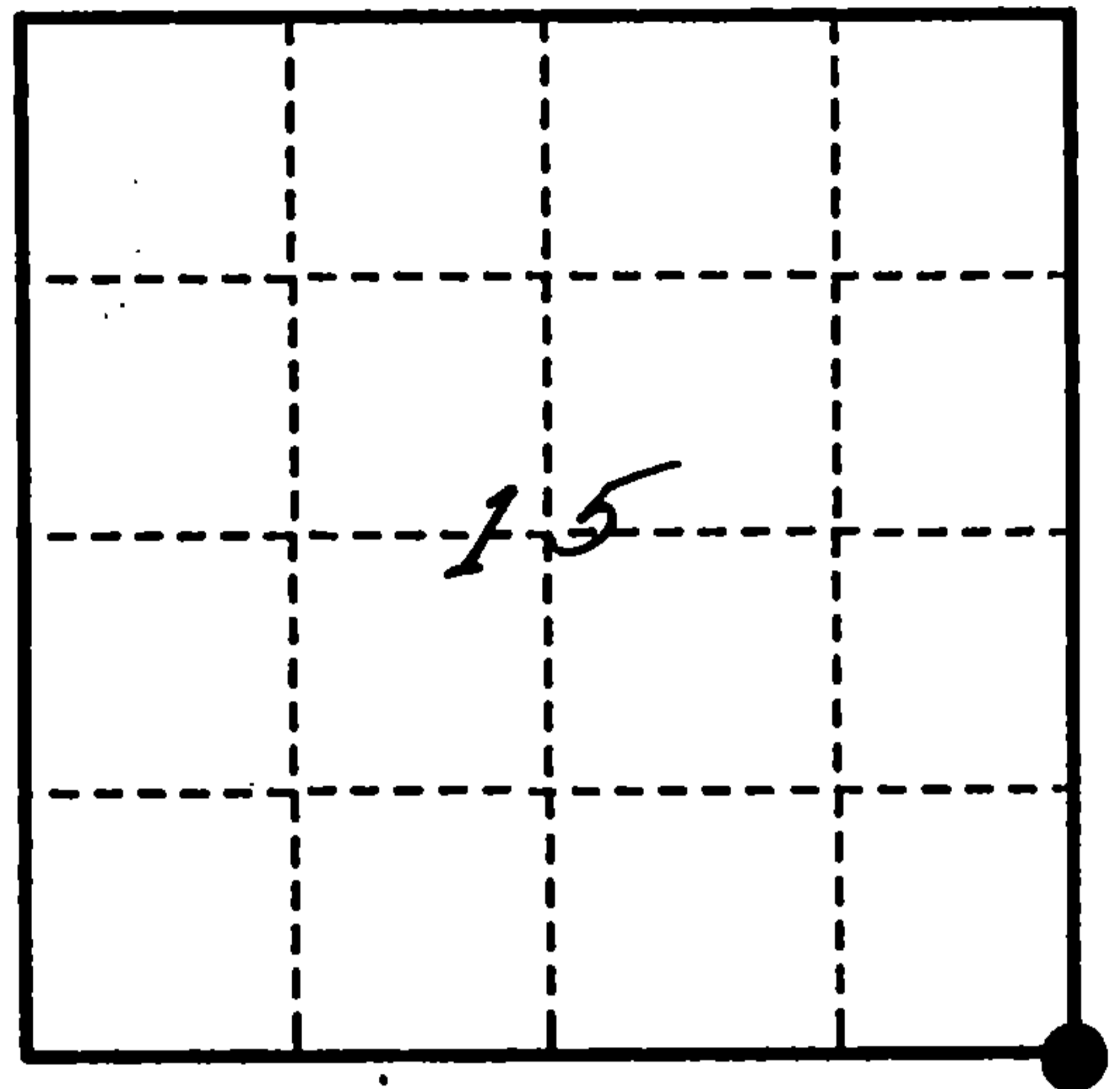


U. S. PUBLIC LAND SURVEY MONUMENT RECORD

INSTRUCTIONS: This record shall show the location of the corner and shall include all of the following nine elements (a through i).

- (a) Identify the corner by reference to the U.S. public land survey system.
- = Corner monument restored.

Section Corner to Sections 14, 15, 22 & 23;
T.34N., R.16E., 4th P.M.



- (b) Describe any record evidence, monument evidence, occupational evidence, testimonial evidence or any other material evidence you considered, and whether the monument was found or placed.

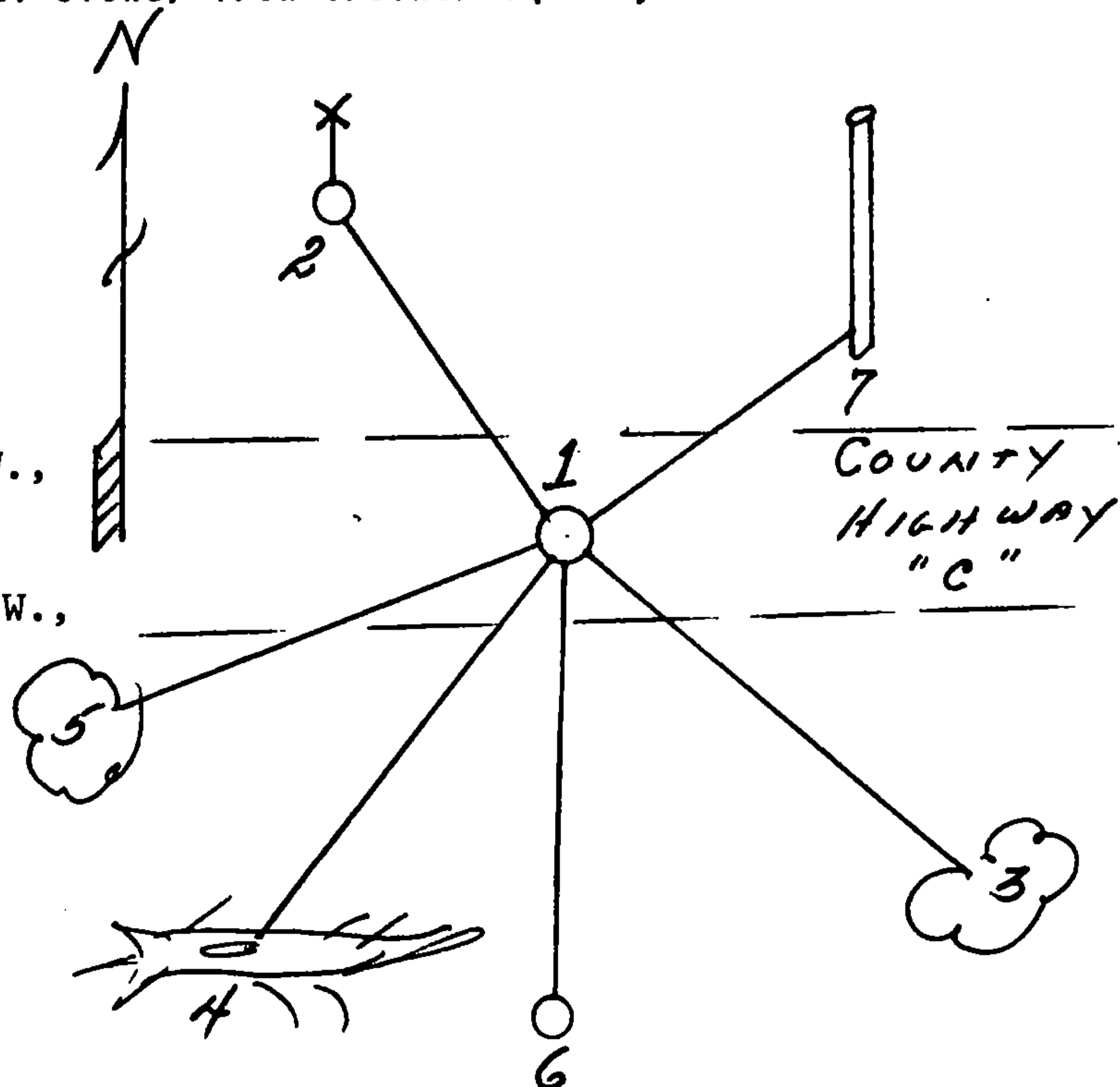
Found railroad spike set for corner in 1983 and reference corner, with Aspen BT in good condition. Black Cherry BT down and dead. Power Pole looks new, lots of fresh earth work near pole, could be WPS or telephone line being buried.

We made one new BT: Black Cherry, 6", S.69°W., 126.95'

- (c) In the plan view drawing below, provide reference ties to at least 4 witness monuments, or, if the location is within a municipality, to at least 2 witness monuments. (witness monuments shall be made of concrete, natural stone, iron or other equally durable material.)

- (d) Show a plan view drawing depicting the relevant monuments and reference ties which is sufficient in detail to enable accurate relocation of the corner monument if the corner monument is disturbed. Indicate north.

1. Railroad spike.
2. Ref. Cor. 2" Aluminum Monument N.35°W., 39.87'/Steel sign post, 1.0' North.
3. Aspen, 6", S.52°E., 86.78'.
4. Black Cherry (dead & down), 6", S.38°W., 124.30'.
5. Black Cherry, 6", S.69°W., 126.95'.
6. U.S.G.S. Bench Mark, S.01°W., 52.44'.
7. Power Pole, N.54°E., 43.29'.



REGISTER'S OFFICE,
Forest County, Wis.

Received for record this 9th day
of March, A.D., 1993 at
9:15 o'clock A.M. and recorded
in Vol. 34-16 Cases Restorations
page N-17

Shelley
Register of Deeds

(a) Describe any material discrepancy between the location of the corner as restored or reestablished and the location of that corner as previously restored or reestablished by distance and direction. Show the discrepancy on the plan view drawing under (d), above. Show the distances between the corner as previously restored or reestablished and (1) the corner as restored or reestablished, and (2) to at least 2 of the witness monuments shown on the drawing in (d), above.

N/A

(f) Was the corner restored through acceptance of (1) an obliterated evidence location, or, (2) a found perpetuated location?

(2)

(g & h) Was the corner reestablished through lost corner proportionate methods? If so, show the method, including the directions and distances to other public land survey corners used as evidence or used for proportioning in determining the corner location?

N/A

(1) I, Milo E. Stefan

(type or print name) certify that the corner location shown on this record was determined by me or under my direction and control and that this U.S. Public Land Survey Monument Record is correct and complete to the best of my knowledge and belief.



Milo E. Stefan
Signature

November 20, 1992
Date

CERTIFICATE READY FOR FILING:

Dale R. Covey
Acting District Ranger

Document Number

209975

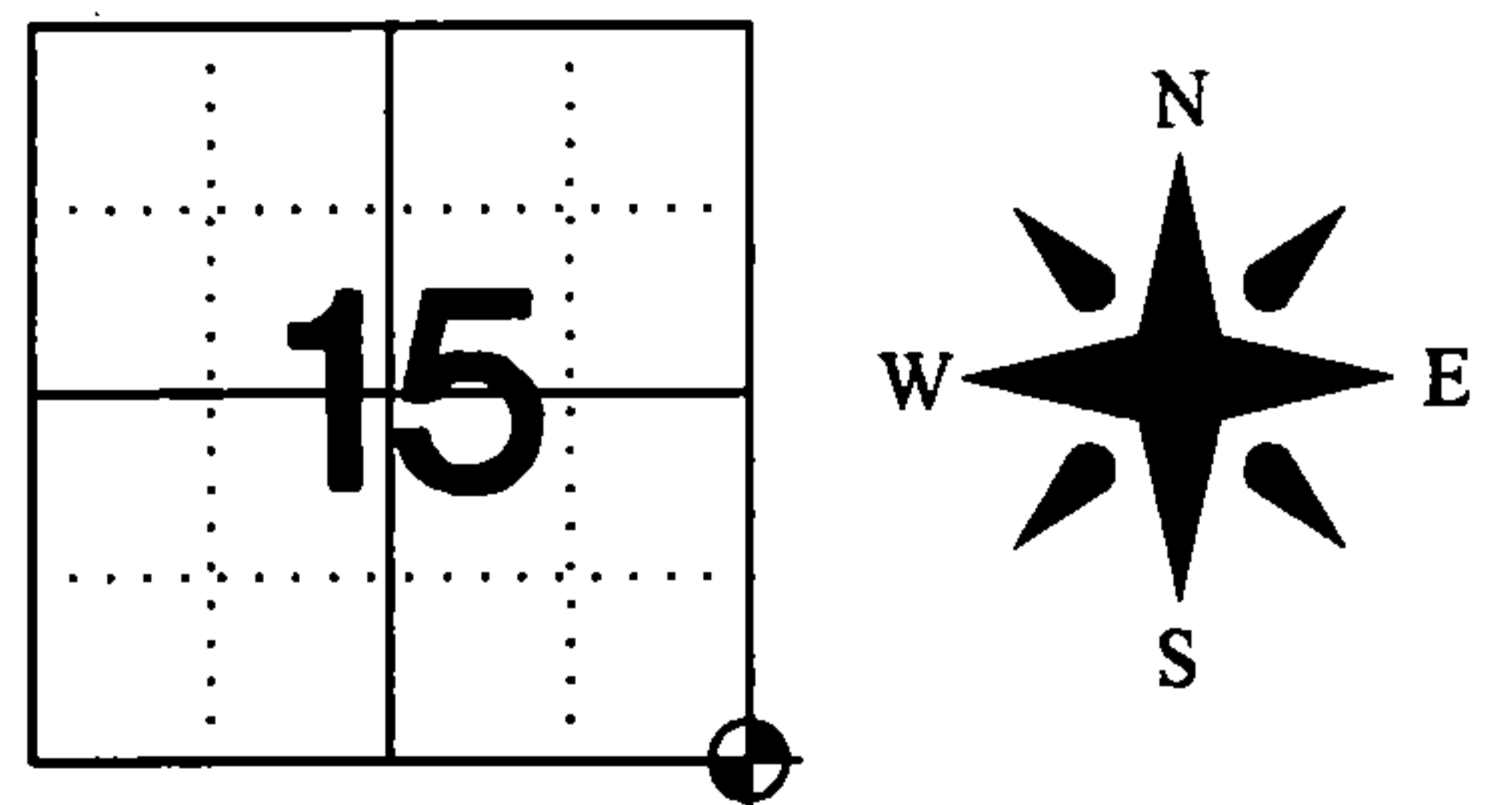
REGISTER'S OFFICE
Forest County, Wis.
Received for record this 17th day
of September A.D., 2012 at
9:00 o'clock A.M. and recorded
in Vol. 2012 RESTORATION
page N-17
[Signature]
Register of Deeds

**U.S. PUBLIC LAND SURVEY MONUMENT RECORD
FOREST COUNTY, WISCONSIN**

N-17

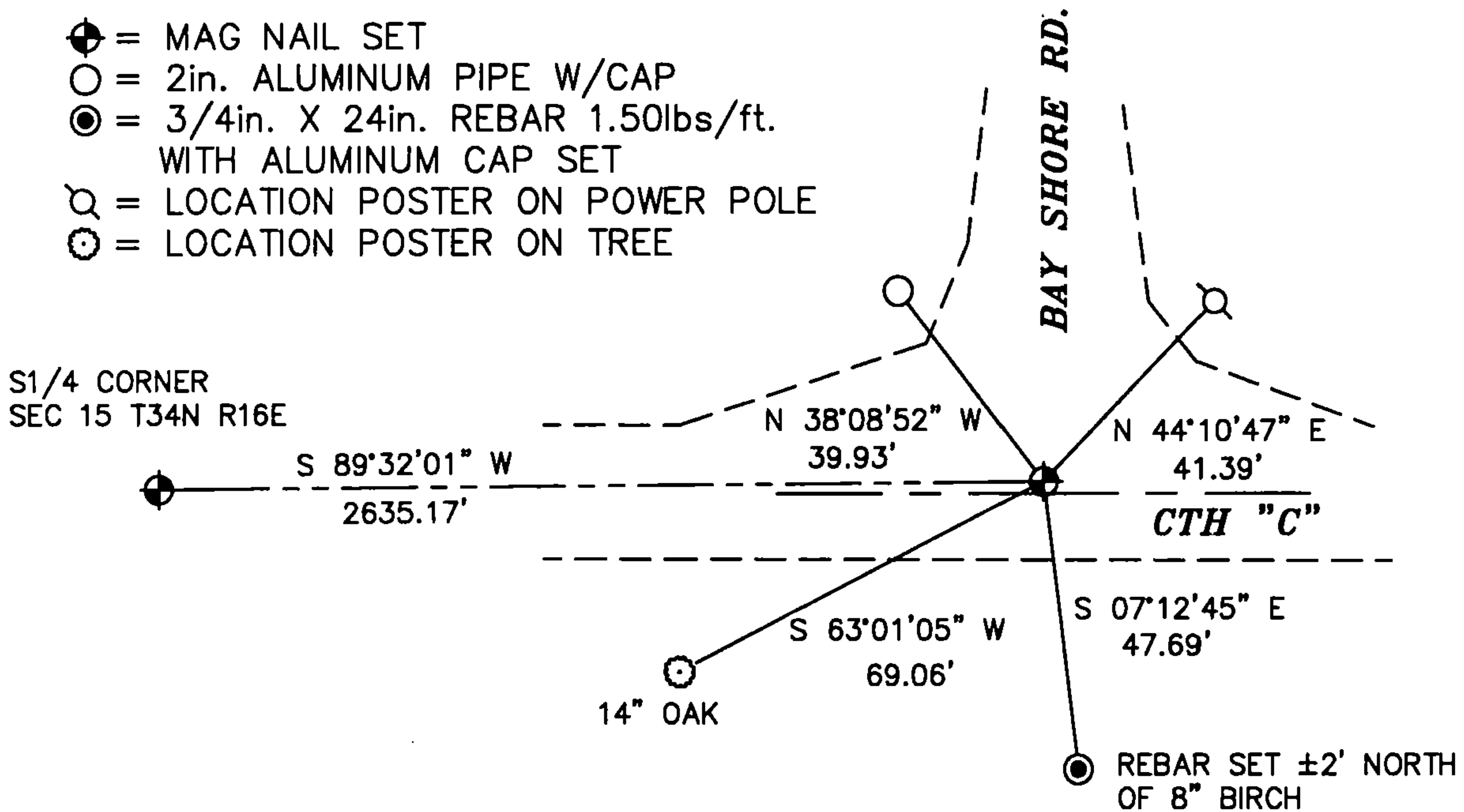
IN ACCORDANCE WITH WISCONSIN ADMINISTRATIVE CODE, CHAPTER A-E 7.08 (3) (A)-(I)

LOCATION: CHAPTER A-E 7.08 (3): (A)
SECTION 15 TOWNSHIP 34 NORTH RANGE 16 EAST
TYPE OF MONUMENT: MAG NAIL OVER 3/4in. REBAR
WITH ALUMINUM CAP
HORIZONTAL DATUM: NAD 83(2007) GRID
FOREST COUNTY COORDINATES
NORTHING: 516004.190
EASTING: 947542.174



RECOVERY PROCEDURES: CHAPTER A-E 7.08 (3): (B), (F), (G), (H)
20 NOV 1992: MONUMENT RECORD BY RLS 1558 (DOCUMENT #146850, VOL. 34-16 N-17) CALLS FOR A RAILROAD SPIKE AT CORNER
7 JUNE 2012: FOUND CALLED FOR RAILROAD SPIKE UNDER FIRST LIFT OF BITUMINOUS AND RECORDED LOCATION PRIOR TO CTH "C" RESURFACE PROJECT
30 JULY 2012: SET 3/4in. X 24in. REBAR 1.50lbs/ft. WITH ALUMINUM CAP IN ROAD BASE AND THEN SET A MAG NAIL IN BITUMINOUS OVER REBAR AFTER COMPLETION OF CTH "C" RESURFACE PROJECT

PLAN VIEW: CHAPTER A-E 7.08 (3): (C), (D), (E),
⊕ = MAG NAIL SET
○ = 2in. ALUMINUM PIPE W/CAP
⊙ = 3/4in. X 24in. REBAR 1.50lbs/ft. WITH ALUMINUM CAP SET
⊗ = LOCATION POSTER ON POWER POLE
⊙ = LOCATION POSTER ON TREE



SURVEYOR'S CERTIFICATE: CHAPTER 7.08 (3): (I)
THE UNDERSIGNED HEREBY CERTIFIES THAT THE U.S. PUBLIC LAND SURVEY MONUMENT RECORD IS CORRECT AND COMPLETE TO THE BEST OF MY KNOWLEDGE AND BELIEF.



[Signature]
DARREN B. KRZANOWSKI
WISCONSIN LAND SURVEYOR S-2663
DATED THIS 2ND DAY OF AUGUST 2012

217