

Document Number
209974

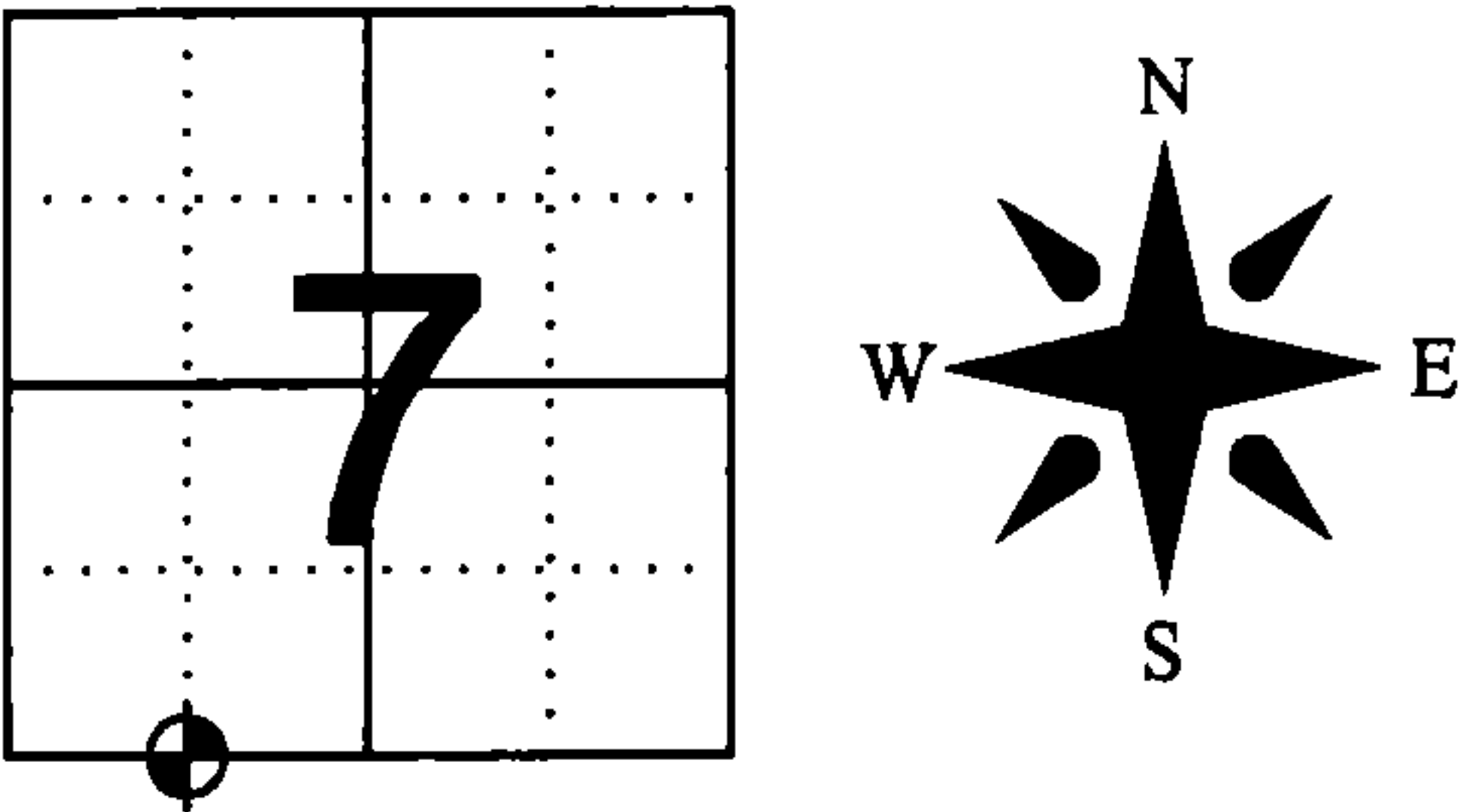
REGISTER'S OFFICE
Forest County, Wis.
Received for record this 17th day
of September A.D., 2012 at
9:00 o'clock A.M. and recorded
in Vol. CORNER RECOVERY
page 1-2
Darrell M. Bitten, Deputy
Register of Deeds

**U.S. PUBLIC LAND SURVEY MONUMENT RECORD
FOREST COUNTY, WISCONSIN**

IN ACCORDANCE WITH WISCONSIN ADMINISTRATIVE CODE, CHAPTER A-E 7.08 (3) (A)-(I)

LOCATION: CHAPTER A-E 7.08 (3): (A)
SECTION 7 TOWNSHIP 34 NORTH RANGE 16 EAST
TYPE OF MONUMENT: MAG NAIL OVER 3/4in. REBAR
WITH ALUMINUM CAP

HORIZONTAL DATUM: NAD 83(2007) GRID
FOREST COUNTY COORDINATES
NORTHING: 521207.926
EASTING: 927869.716

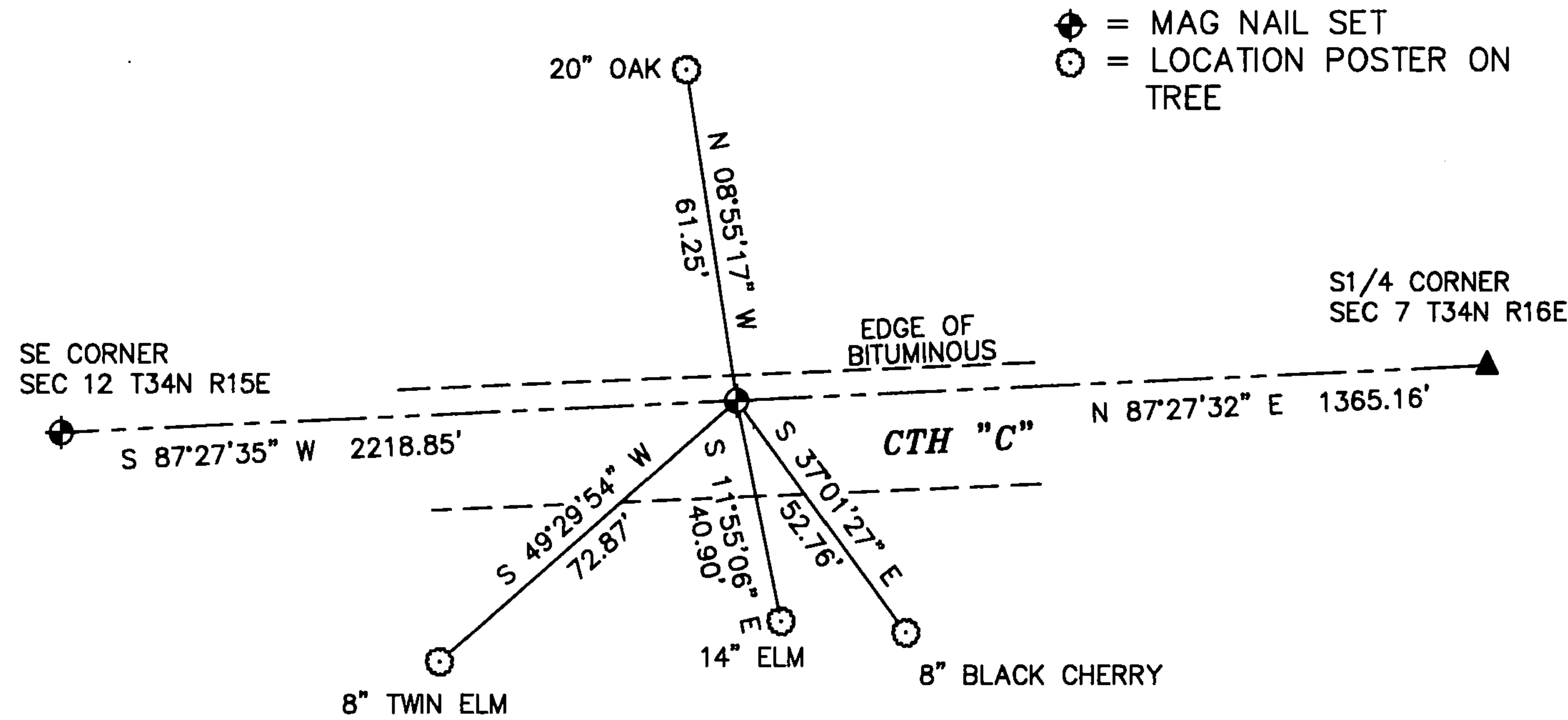


RECOVERY PROCEDURES: CHAPTER A-E 7.08 (3): (B), (F), (G), (H)

7 JUNE 2012: FOUND RAILROAD SPIKE, LOCATION FIT BEARINGS AND DISTANCES SHOWN ON PLAT OF SURVEY BY RLS 1259 DATED 1986. RECORDED LOCATION IN PREPARATION OF CTH "C" RESURFACE PROJECT

30 JULY 2012: SET 3/4in. X 24in. REBAR 1.50lbs/ft. WITH ALUMINUM CAP IN ROAD BASE, THEN SET A MAG NAIL OVER THE REBAR IN THE BITUMINOUS ROADWAY AFTER COMPLETION OF CTH "C" RESURFACE PROJECT

PLAN VIEW: CHAPTER A-E 7.08 (3): (C), (D), (E),



SURVEYOR'S CERTIFICATE:

CHAPTER 7.08 (3): (I)
THE UNDERSIGNED HEREBY CERTIFIES THAT THE U.S. PUBLIC LAND SURVEY MONUMENT RECORD IS CORRECT AND COMPLETE TO THE BEST OF MY KNOWLEDGE AND BELIEF.



Darren B. Krzanowski
DARREN B. KRZANOWSKI
WISCONSIN LAND SURVEYOR S-2663
DATED THIS 2nd DAY OF AUGUST 2012