

U. S. PUBLIC LAND SURVEY MONUMENT RECORD

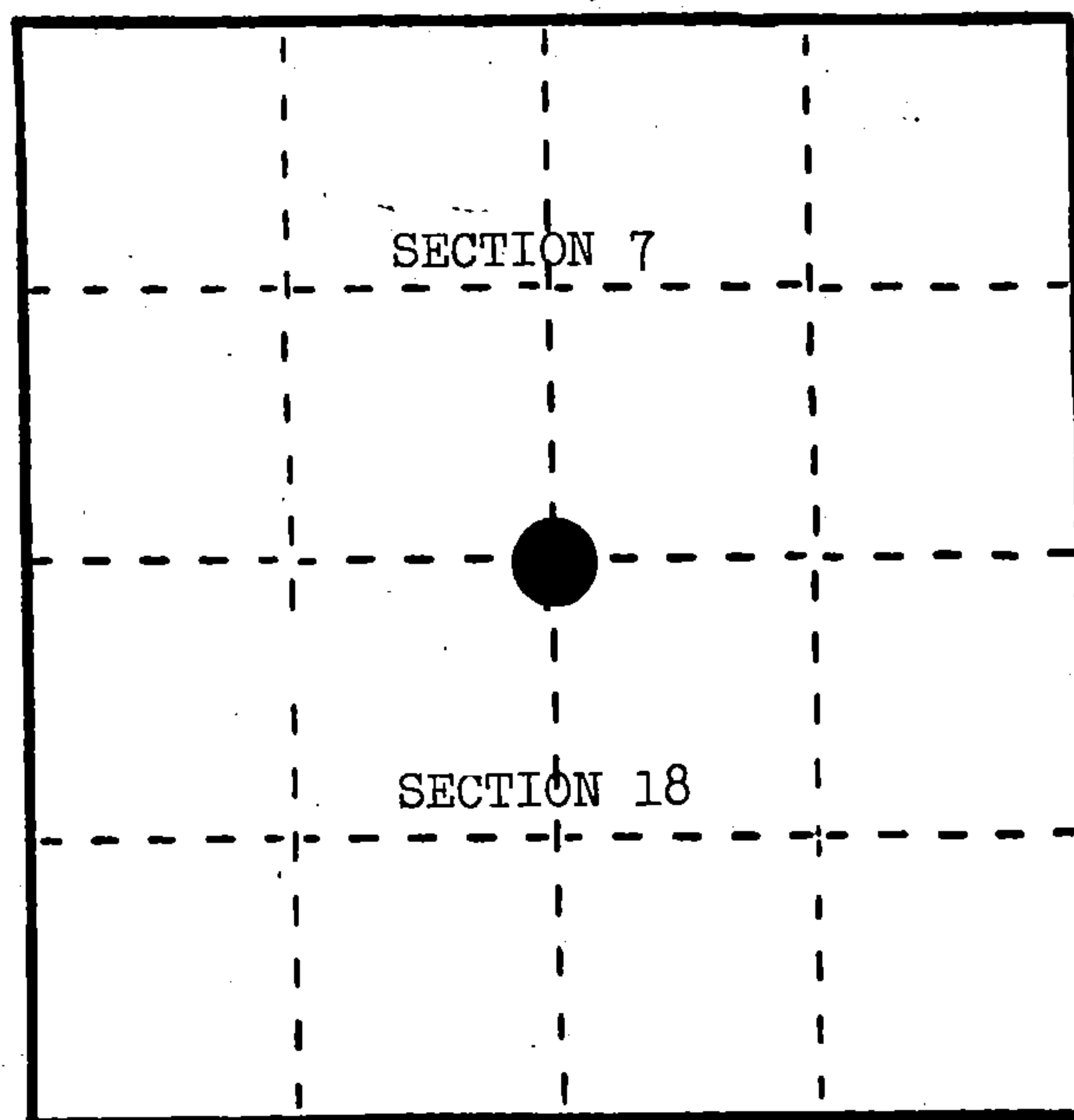
INSTRUCTIONS:

This record shall show the location of the corner and shall include all of the following nine elements (a through i).

- (a) Identify the corner by reference to the U.S. public land survey system.

○ = Corner monument restored.

Quarter corner between Sections 7 and 18,
T.34N., R.16E.



- (b) Describe any record evidence, monument evidence, occupational evidence, testimonial evidence or any other material evidence you considered, and whether the monument was found or placed.

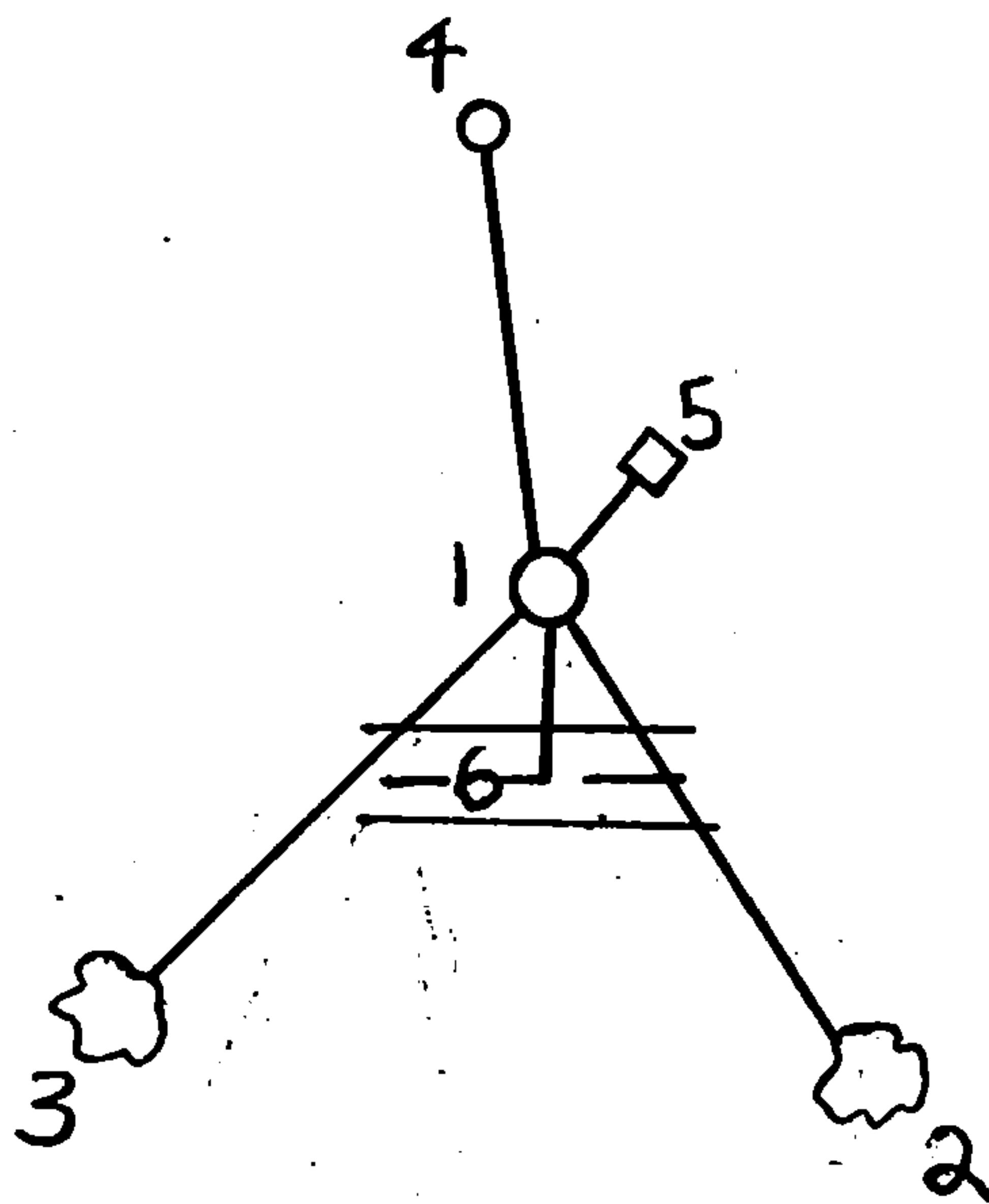
In 1858, James McBride set post 52.51 chains with the following BTs: Hemlock, 12", N.6°E., 46 links; Birch, 16", S.23°W., 41 links.

December 5, 1983, Alan Harrison set point at end of N-S fence line and intersection of Highway "C". Corner set $1\frac{1}{2}$ rods south of fence corner with location tag. Resident witness, Mr. Stubbs, said corner was in old road bed of County "J" south of fence corner. Nathan Smith's survey of 1916 fits this location well.

- (c) In the plan view drawing below, provide reference ties to at least 4 witness monuments, or, if the location is within a municipality, to at least 2 witness monuments. (Witness monuments shall be made of concrete, natural stone, iron or other equally durable material.) Describe witness monuments.

- (d) Show a plan view drawing depicting the relevant monuments and reference ties which is sufficient in detail to enable accurate relocation of the corner monument if the corner monument is disturbed. Indicate north.

- 2" x 36" aluminum monument stamped to identify the corner.
- Red Maple, 7", S.22°E., 60.57'
- Basswood, 6", S.54°W., 87.54'
- Power Pole #3416-7L10, N.5°W., 23.78'
- Steel Sign Post, Northeast, 13.8'
- Center County "C", South, 13.9'



REGISTER'S OFFICE }
Forest County, Wis.

Received for record this 24th day

of January, 1985 A.D., at

10:30 o'clock A.M. and

recorded in Vol. CORNER RESTORATIONS

on page J-3

Paul Aschenbrenner
REGISTER

- (e) Describe any material discrepancy between the location of the corner as restored or reestablished and the location of that corner as previously restored or reestablished by distance and direction. Show the discrepancy on the plan view drawing under (d), above. Show the distances between the corner as previously restored or reestablished and (1) the corner as restored or reestablished, and (2) to at least 2 of the witness monuments shown on the drawing in (d), above.

None.

- (f) Was the corner restored through acceptance of (1) an obliterated evidence location, or, (2) a found perpetuated location?

(1) an obliterated evidence location.

- (g&h) Was the corner reestablished through lost corner proportionate methods? If so, show the method, including the directions and distances to other public land survey corners used as evidence or used for proportioning in determining the corner location?

No.

- (i) I, Alan D. Harrison
(type or print name) certify that the corner location shown
on this record was determined by me or under my direction and
control and that this U.S. Public Land Survey Monument Record is
correct and complete to the best of my knowledge and belief.

Signature

Date

11/27/84



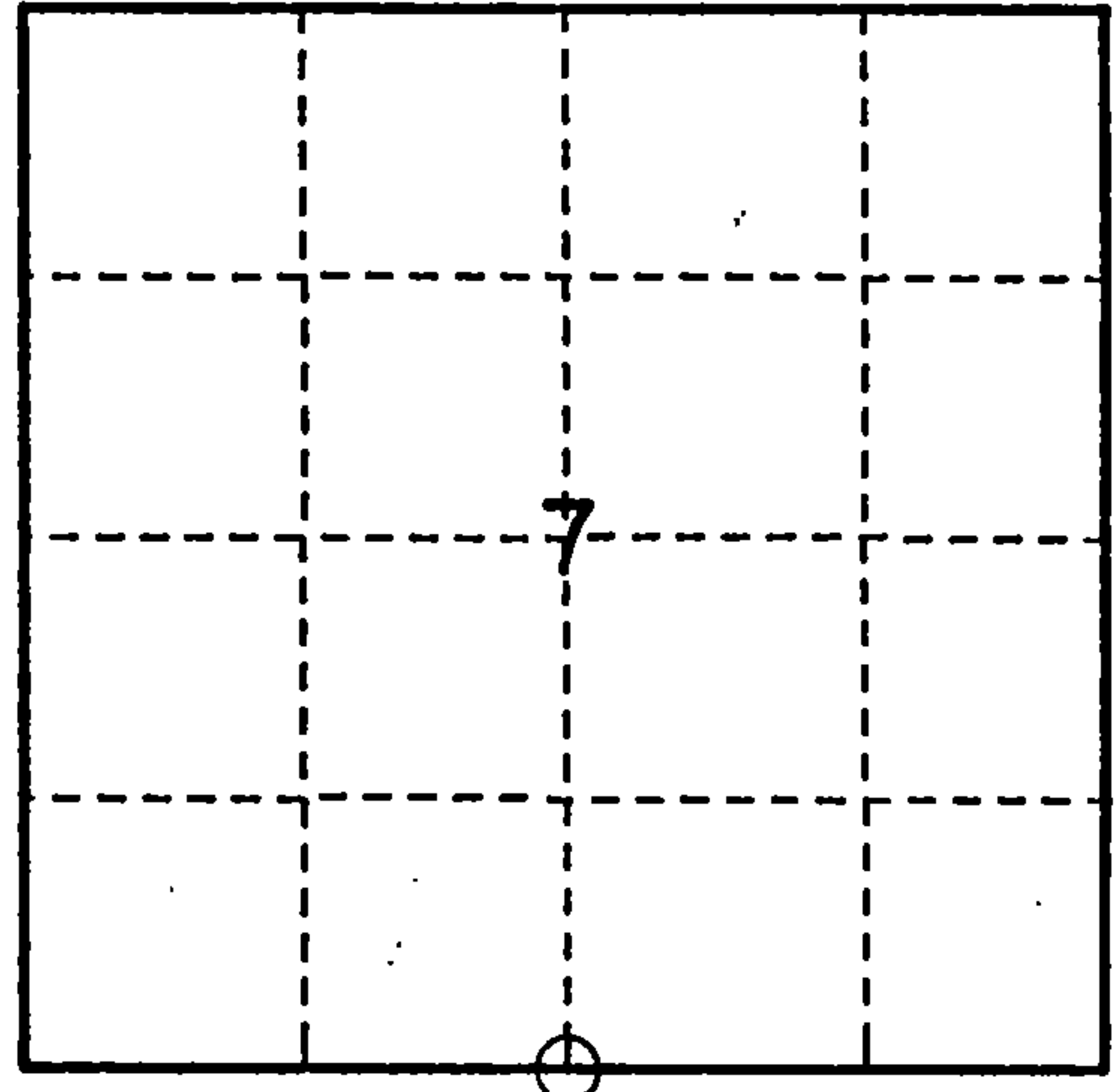
U. S. PUBLIC LAND SURVEY MONUMENT RECORD

INSTRUCTIONS:

This record shall show the location of the corner and shall include all of the following nine elements (a through i).

- (a) Identify the corner by reference to the U.S. public land survey system.
 O = Corner monument restored.

SOUTH $\frac{1}{4}$ CORNER OF SECTION 7, TWP. 34 N.,
 R. 16 E.



- (b) Describe any record evidence, monument evidence, occupational evidence, testimonial evidence or any other material evidence you considered, and whether the monument was found or placed.

1858 - ORIGINAL SURVEY BY McBRIDE, B.Ts - HEMLOCK 12" N.6°E. 46 LKS.,
 BIRCH 16" S.23°W. 41 LKS.

1983 - HARRISON R.L.S. NO.S-1651 SET 2" DIA. ALUMINUM MONUMENT, B.Ts
 RED MAPLE 7" S.22°E. 60.57FT., BASSWOOD 6" S.54°W. 87.54FT., WITNESS -
 STEEL SIGN POST NE 13.80FT., REFERENCE CENTER COUNTY "C" SOUTH 13.90FT.
 WITNESS POWER POLE NO. 3416-7L10 N.5°W. 23.78FT.

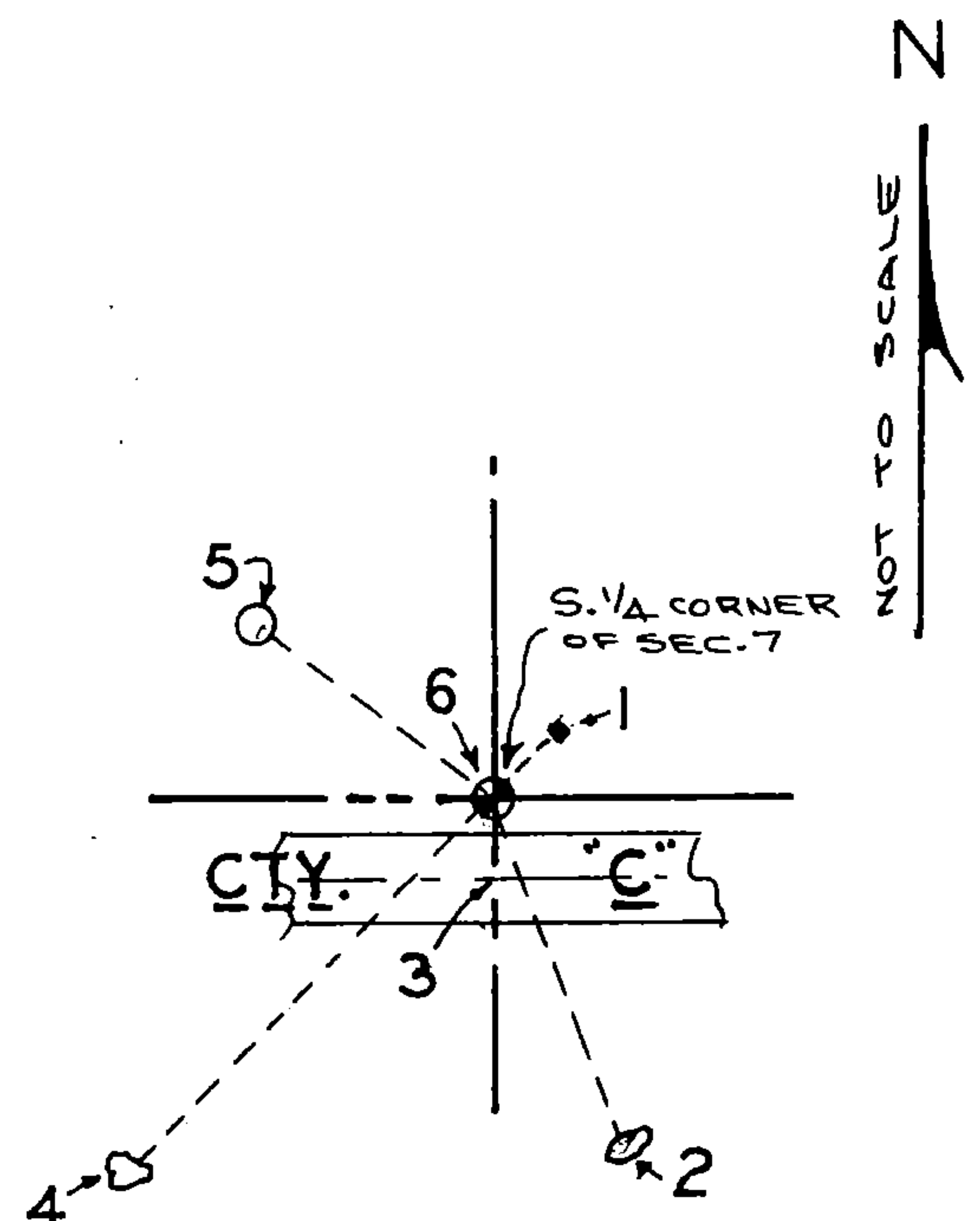
1993 - DOBBRATZ, R.L.S. NO.S-973, FOUND MONUMENT, STEEL SIGN POST AND
 B.Ts., POWER POLE IS GONE. B.T. BASSWOOD 6" BEARING IS WRONG.

- (c) In the plan view drawing below, provide reference ties to at least 4 witness monuments, or, if the location is within a municipality, to at least 2 witness monuments. (witness monuments shall be made of concrete, natural stone, iron or other equally durable material.)

- (d) Show a plan view drawing depicting the relevant monuments and reference ties which is sufficient in detail to enable accurate relocation of the corner monument if the corner monument is disturbed. Indicate north.

WITNESS AND REFERENCE

1. STEEL SIGN POST NE 13.80FT. (EXISTING)
2. B.T. RED MAPLE 8" S.22°E. 60.57FT. (EXISTING)
3. CENTERLINE CTY. "C" SOUTH 13.90FT.
4. B.T. BASSWOOD 6" S.45°W. 87.54FT. (EXISTING)
5. POWER POLE # 34167R4 N.57°W. 47.35FT. (NEW)
6. 2" DIA. ALUMINUM MONUMENT (FOUND)



43416070020

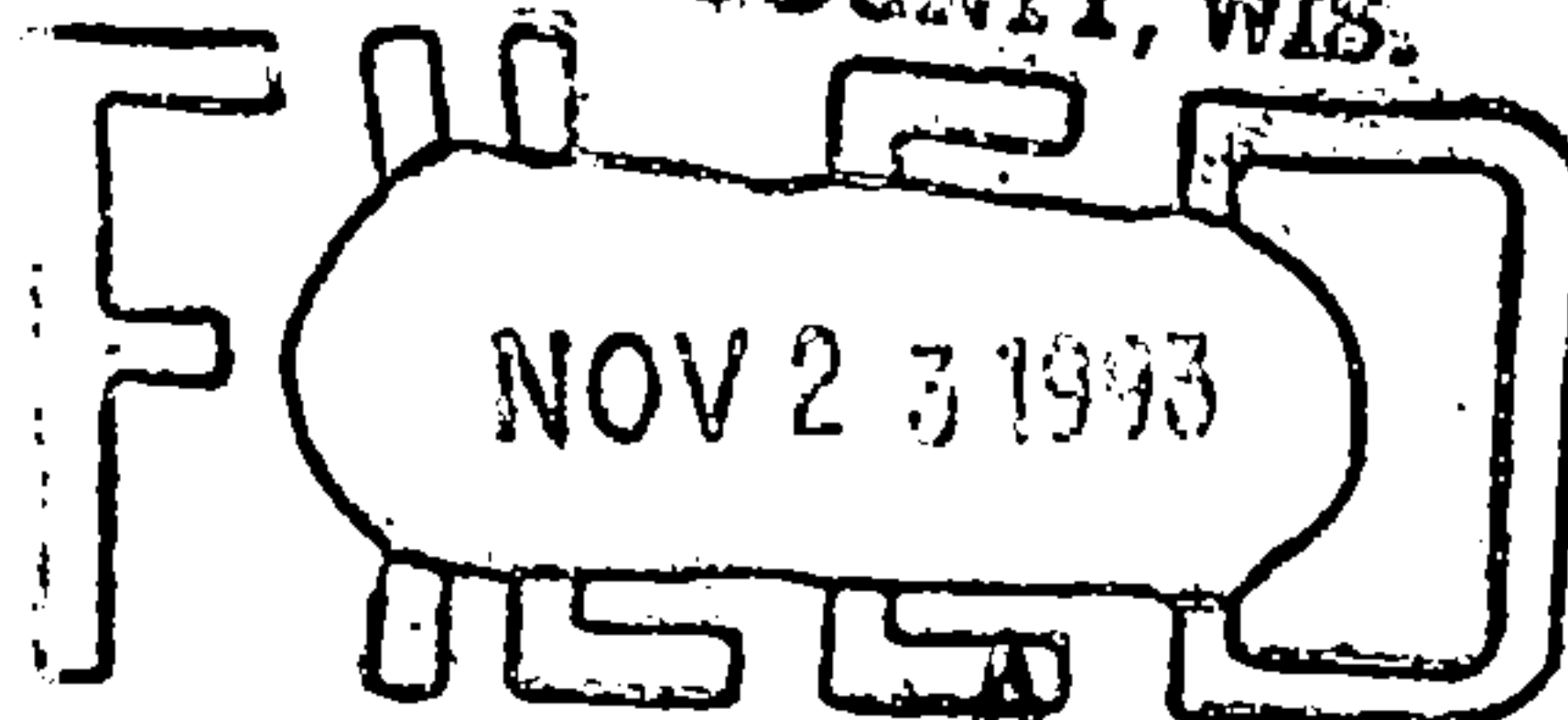
(a) Describe any material discrepancy between the location of the corner as restored or reestablished and the location of that corner as previously restored or reestablished by distance and direction. Show the discrepancy on the plan view drawing under (d), above. Show the distances between the corner as previously restored or reestablished and (1) the corner as restored or reestablished, and (2) to at least 2 of the witness monuments shown on the drawing in (d), above.

(f) Was the corner restored through acceptance of (1) an obliterated evidence location, or, (2) a found perpetuated location?

(2)

(g & h) Was the corner reestablished through lost corner proportionate methods? If so, show the method, including the directions and distances to other public land survey corners used as evidence or used for proportioning in determining the corner location?

REGISTER'S OFFICE
FOREST COUNTY, WIS.



At 9:00 AM.
Paul A. [Signature]
Register of Deeds

(1) I, WAYNE G. DOBBRATZ

(type or print name) certify that the corner location shown on this record was determined by me or under my direction and control and that this U.S. Public Land Survey Monument Record is correct and complete to the best of my knowledge and belief.

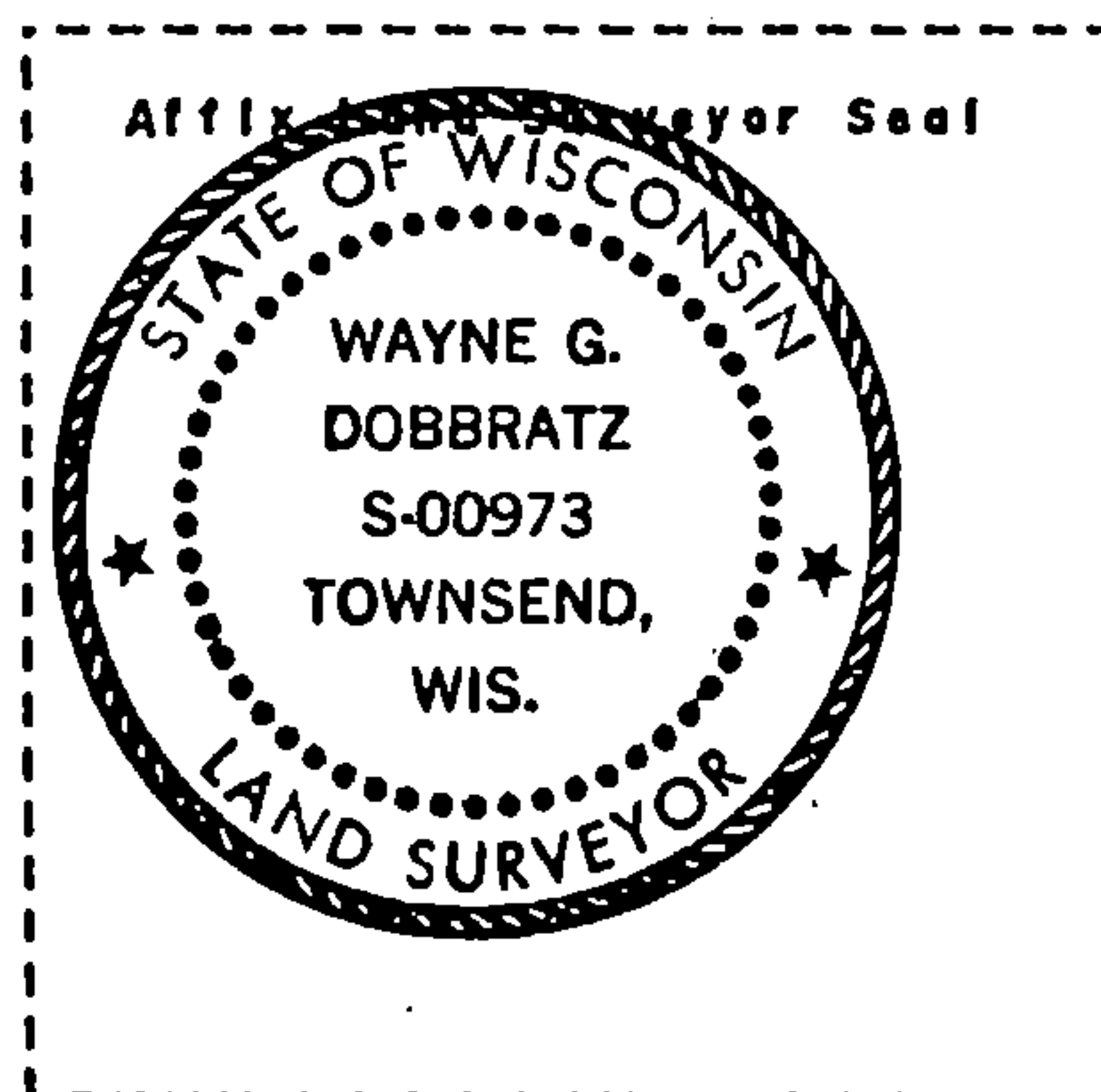
Signature

7/31/93

Date

CERTIFICATE READY FOR FILING

Ralph [Signature] 11-5-93
Acting District Ranger



Document Number
209973

REGISTER'S OFFICE
Forest County, Wis.
Received for record this 17th day
of September A.D., 2012 at
10 o'clock A.M. and recorded
in Vol. 209973 page 53
Cheryl Mosinee Deputy
Register of Deeds

U.S. PUBLIC LAND SURVEY MONUMENT RECORD
FOREST COUNTY, WISCONSIN

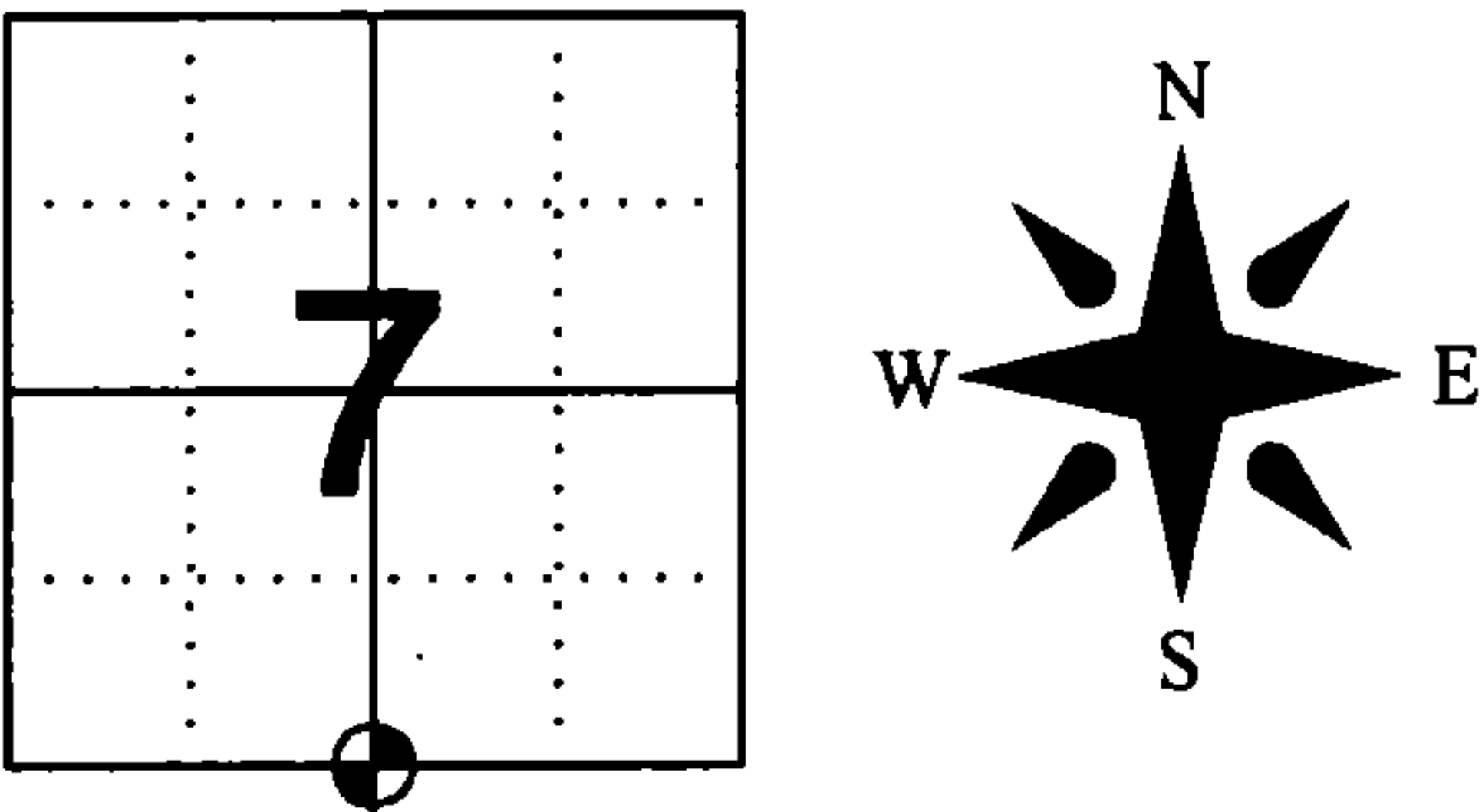
CORNER NO. 43416070020

IN ACCORDANCE WITH WISCONSIN ADMINISTRATIVE CODE, CHAPTER A-E 7.08 (3) (A)-(I)

LOCATION: CHAPTER A-E 7.08 (3): (A)
SECTION 7 TOWNSHIP 34 NORTH RANGE 16 EAST

TYPE OF CORNER: SOUTH 1/4 CORNER
TYPE OF MONUMENT: 3/4in. REBAR/ALUMINUM CAP

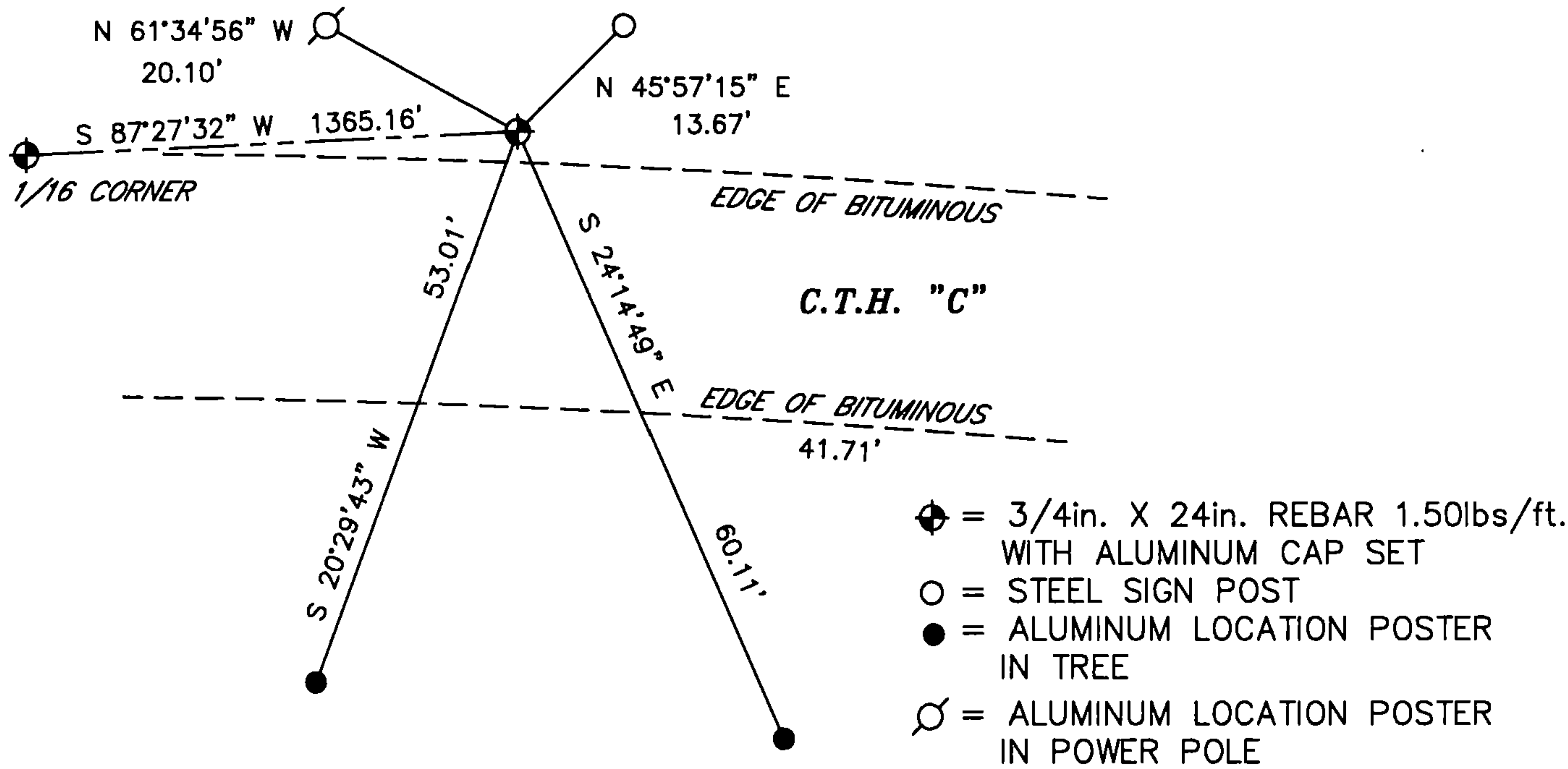
FOREST COUNTY COORDINATES
NORTHING: 521268.453
EASTING: 929233.530



RECOVERY PROCEDURES: CHAPTER A-E 7.08 (3): (B), (F), (G), (H)
1858 ORIGINAL SURVEY BY McBRIDE, B.T.S HEMLOCK 12" N 6° E 46 LKS, BIRCH 16" S 23° W 41 LKS.
1983 HARRISON RLS NO. S-1651 SET 2" DIA. ALUMINIM MONUMENT B.T.S RED MAPLE 7" S 22° E
60.57', BASSWOOD 6" S 54° W 87.54', WITNESS STEEL SIGN POST NE 13.80' REFERENCE CENTER
COUNTY "C" SOUTH 23.78'
1993 DOBBRATZ, RLS NO. S-973, FOUND MONUMENT, STEEL SIGN POST AND B.T.S, POWER POLE IS
GONE. B.T. BASSWOOD 6" BEARING IS WRONG.

7 JUN 2012: FOUND CALLED FOR ALUMINUM MONUMENT IN GOOD CONDITION PRIOR TO CTH "C"
RESURFACE PROJECT.
30 JULY 2012: SET 3/4in. X 24in. REBAR WITH ALUMINUM CAP OVER ALUMINUM MONUMENT AFTER
COMPLETION OF RESURFACE PROJECT

PLAN VIEW: CHAPTER A-E 7.08 (3): (C), (D), (E).



SURVEYOR'S CERTIFICATE: CHAPTER 7.08 (3): (I)

THE UNDERSIGNED HEREBY CERTIFIES THAT THE U.S. PUBLIC LAND
SURVEY MONUMENT RECORD IS CORRECT AND COMPLETE TO THE BEST
OF MY KNOWLEDGE AND BELIEF.



Darren B. Krzanowski
DARREN B. KRZANOWSKI
WISCONSIN LAND SURVEYOR S-2663
DATED THIS 1ST DAY OF AUGUST 2012

43416070020