

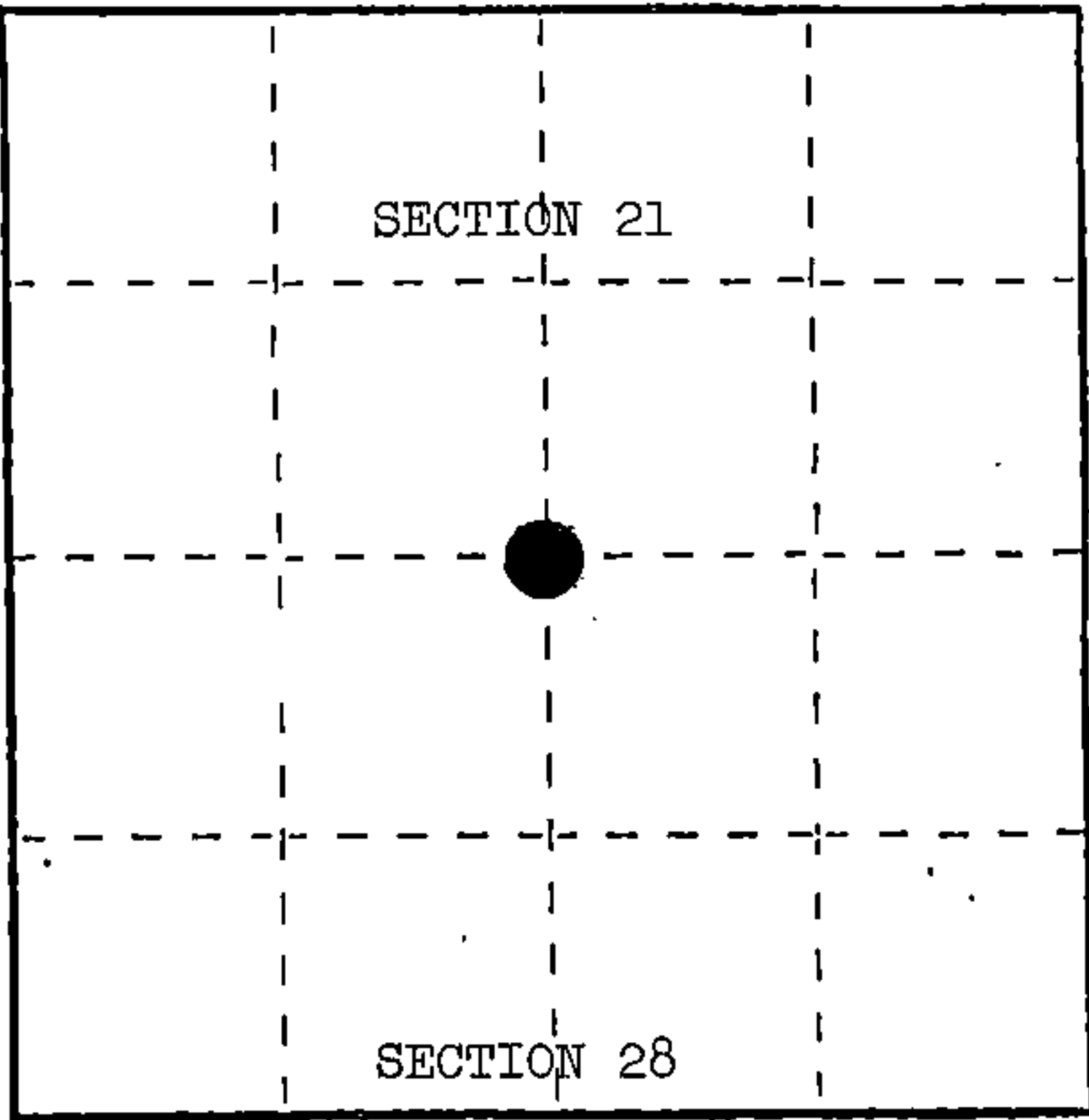
U. S. PUBLIC LAND SURVEY MONUMENT RECORD

INSTRUCTIONS: This record shall show the location of the corner and shall include all of the following nine elements (a through i).

(a) Identify the corner by reference to the U.S. public land survey system.

○ = Corner monument restored.

Quarter corner to Sections 21 and 28, T.34N., R.15E.



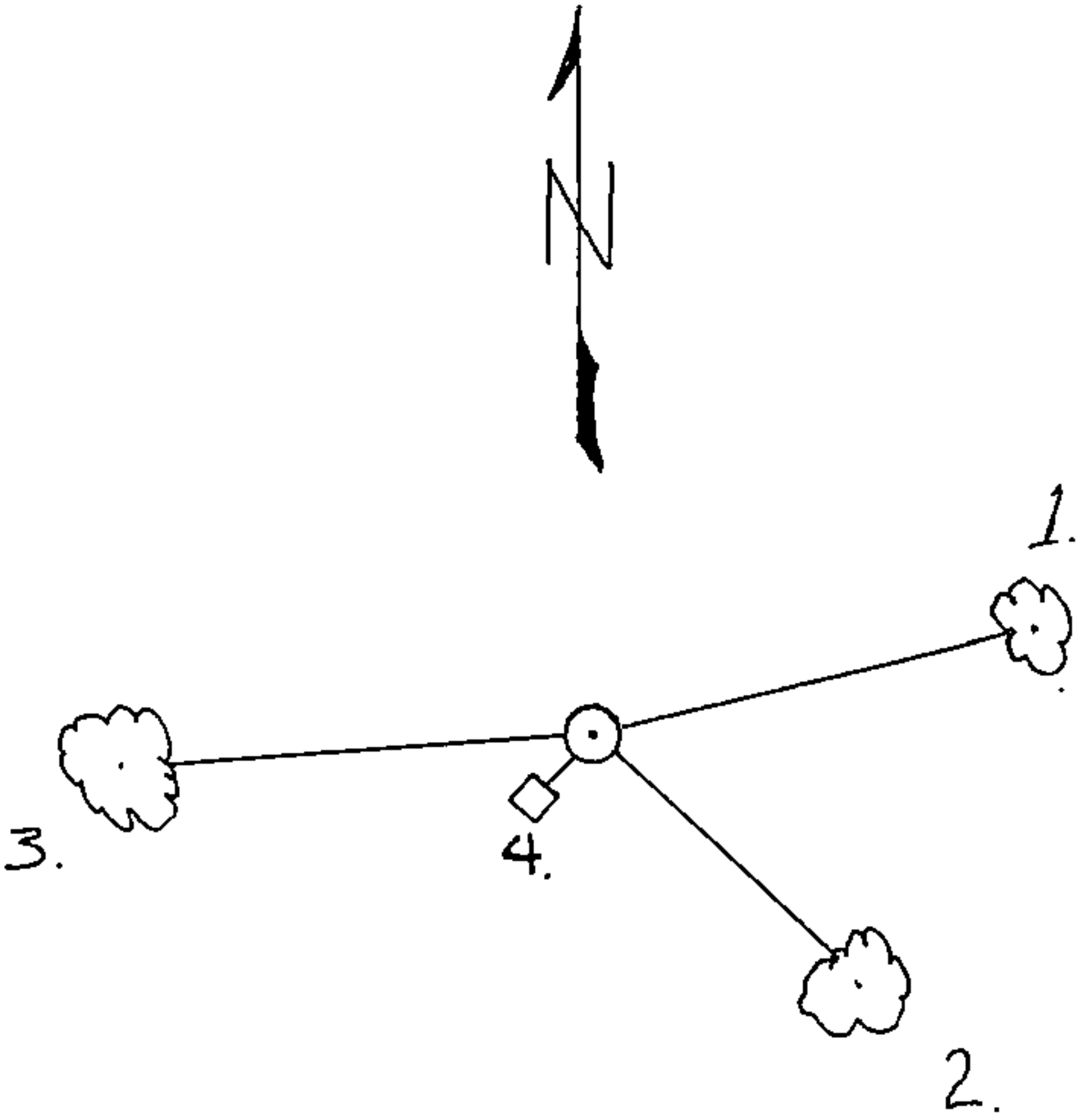
(b) Describe any record evidence, monument evidence, occupational evidence, testimonial evidence or any other material evidence you considered, and whether the monument was found or placed.

Corner restored by single proportionate measure. Placed a 2" x 36" aluminum monument.

(c) In the plan view drawing below, provide reference ties to at least 4 witness monuments, or, if the location is within a municipality, to at least 2 witness monuments. (Witness monuments shall be made of concrete, natural stone, iron or other equally durable material.) Describe witness monuments.

(d) Show a plan view drawing depicting the relevant monuments and reference ties which is sufficient in detail to enable accurate relocation of the corner monument if the corner monument is disturbed. Indicate north.

- 1. Sugar, 4", N.70°E., 34.74 feet
- 2. Sugar, 5", S.54°E., 16.40 feet
- 3. Sugar, 6", S.78°W., 29.48 feet
- 4. Steel Sign Post, Southwest, 1.60 feet



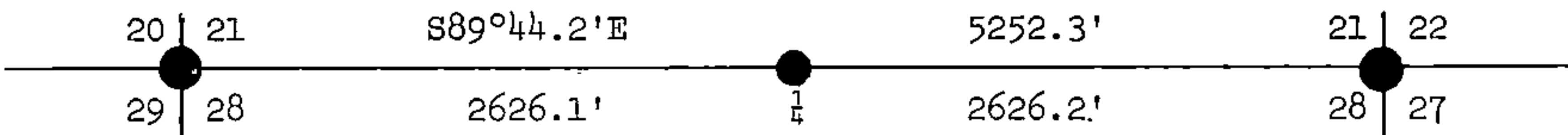
REGISTER'S OFFICE }
Forest County, Wis. }
Received for record this 16th day
of January, 1985, at
9:30 o'clock, A.M. and
recorded in Vol. CORNER RESTORATIONS
on page R-11
Paul Aschenbrenner
REGISTER

(e) Describe any material discrepancy between the location of the corner as restored or reestablished and the location of that corner as previously restored or reestablished by distance and direction. Show the discrepancy on the plan view drawing under (d), above. Show the distances between the corner as previously restored or reestablished and (1) the corner as restored or reestablished, and (2) to at least 2 of the witness monuments shown on the drawing in (d), above.

(f) Was the corner restored through acceptance of (1) an obliterated evidence location, or, (2) a found perpetuated location?

Lost corner position

(g&h) Was the corner reestablished through lost corner proportionate methods? If so, show the method, including the directions and distances to other public land survey corners used as evidence or used for proportioning in determining the corner location?



(i) I, Milo E. Stefan
(type or print name) certify that the corner location shown on this record was determined by me or under my direction and control and that this U.S. Public Land Survey Monument Record is correct and complete to the best of my knowledge and belief.

Milo E. Stefan
Signature

3/2/84
Date



REGISTER'S OFFICE
Forest County, WI
Received for record this
13th day of June, 2008
at 2:05 o'clock P.M. and
recorded in Vol. 80966
on page 811
Kay Swanson
Deputy REGISTER

FORM NO. 985-A
HCMiller
Print Evolution
Stock No. 26273

Document Number

197703

U.S. PUBLIC LAND SURVEY MONUMENT RECORD

History of original corner establishment and subsequent restorations and description of any record, monument, occupational, testimonial or other evidence considered:

1984 - Corner was restored by Milo Stefan using single proportionate method. Placed a 2"x36" aluminum monument.

2007 - Found 2"x36" monument and witnesses. Monument was tied off before construction. Monument restored using witness monuments set prior to construction of Sugar Bush Lane.

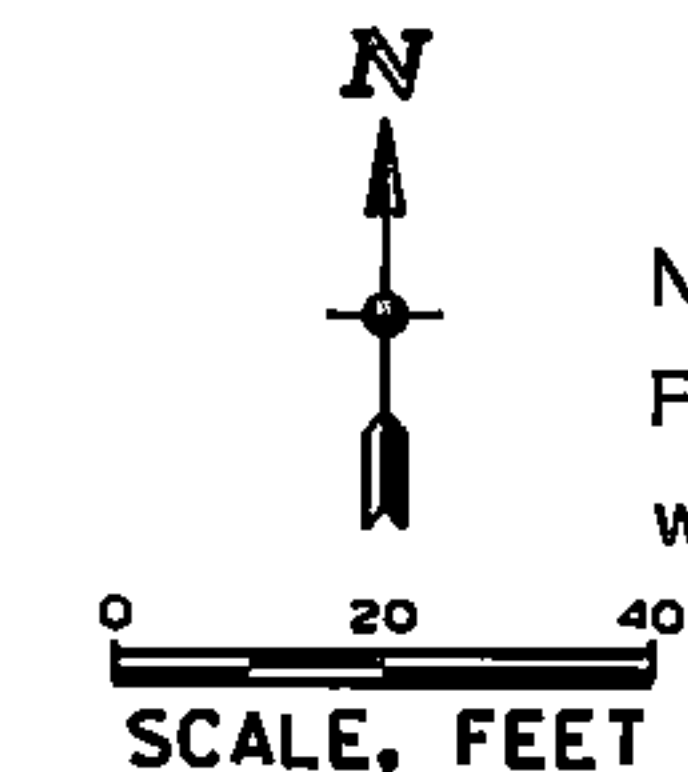
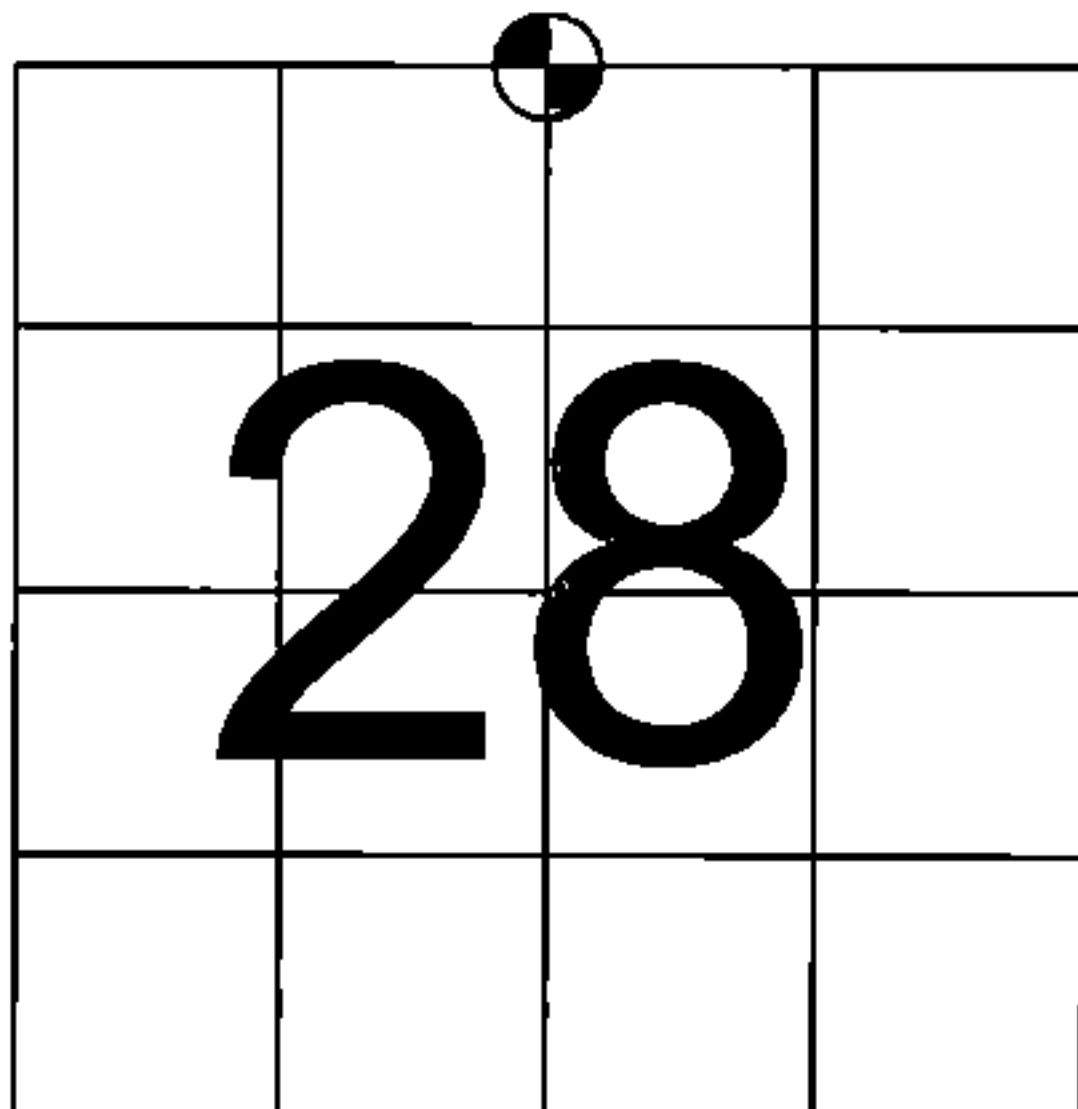
Corner was: (Check All That Apply)

- ☐ Restored through acceptance of an obliterated evidence location
- ☒ Restored through acceptance of a found perpetuated location
- ☐ Considered a lost corner and reestablished through lost corner proportionate methods (include a plan view drawing showing distances and directions to other Public Land Survey Corner used for proportioning and determining the corner location)
- ☐ Restored or reestablished in a location that differs from a previous restoration of reestablishment (include a plan view drawing and indicate what was set and/or found)
- ☐ Established through bearing-bearing intersection using the North-South $\frac{1}{4}$ Line and East-West $\frac{1}{4}$ Line (show all corners used in establishment)

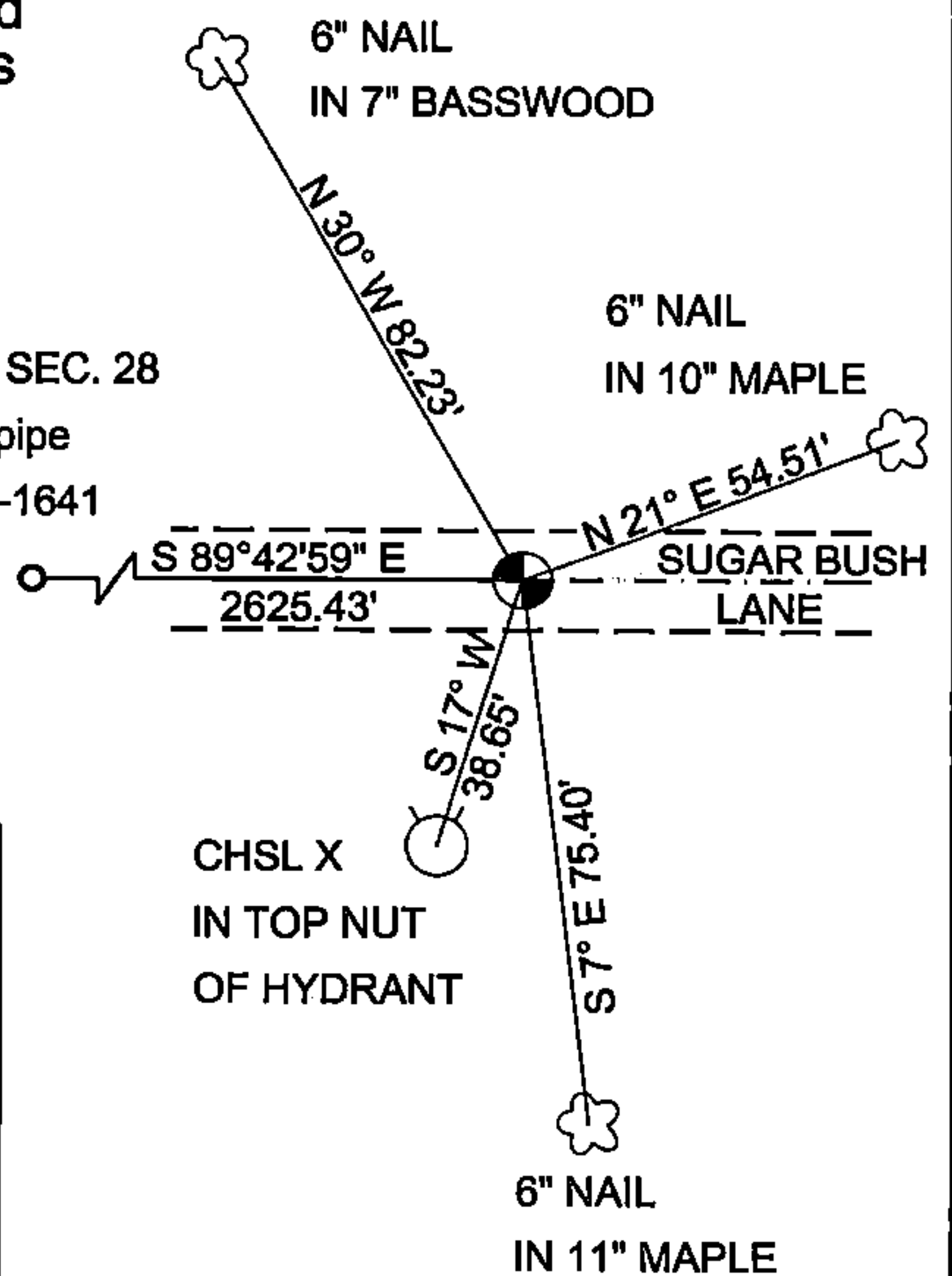
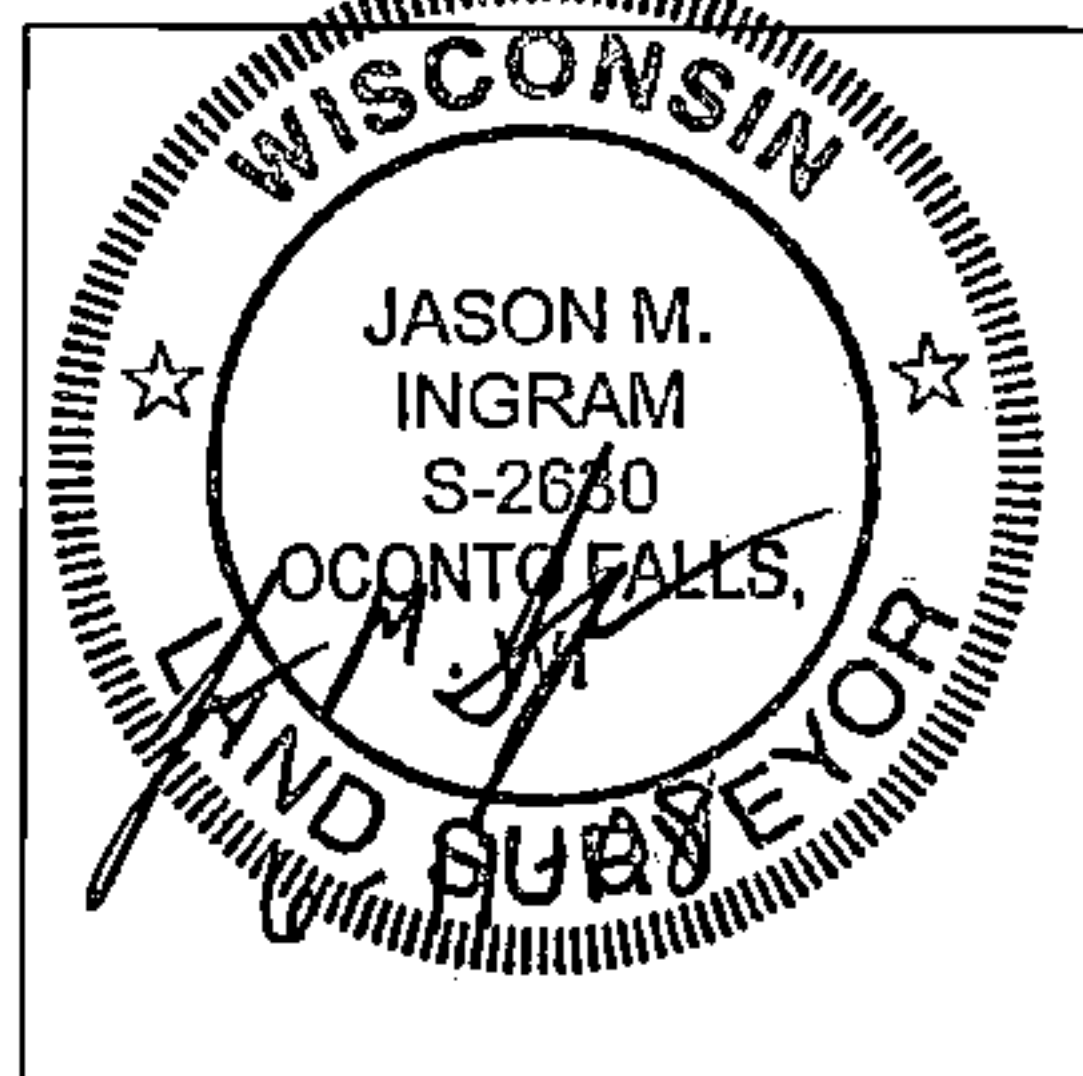
Describe the monument and accessories used to perpetuate the location of this corner. (include a plan view drawing and indicate what was set and/or found.)

Blazed tree and set 6" nail in tree with the head of nail facing the section corner. Measurements were made from head of nail. Corner marked with 2"x36" preexisting aluminum monument.

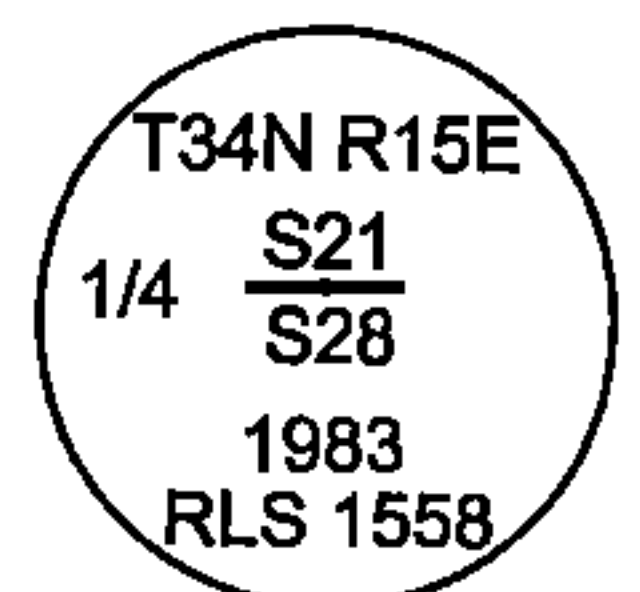
The N 1/4
corner of Section 28
T. 34 N., R. 15 E.,



BEARINGS REFERENCED TO
WCCS FOREST ZONE NAD 83
1991 ADJUSTMENT



● = CORNER LOCATION. MONUMENT'S STAMPING IS:



I, Jason M. Ingram, RLS S-2630

(type or print name) certify that the corner location shown on the record was determined by me or under my direction and control and that this U.S. Public Land Survey Monument Record is correct and complete to the best of my knowledge and belief.

Signature

6-11-08

Date

Index No. _____

43415210020

R-11