

129898

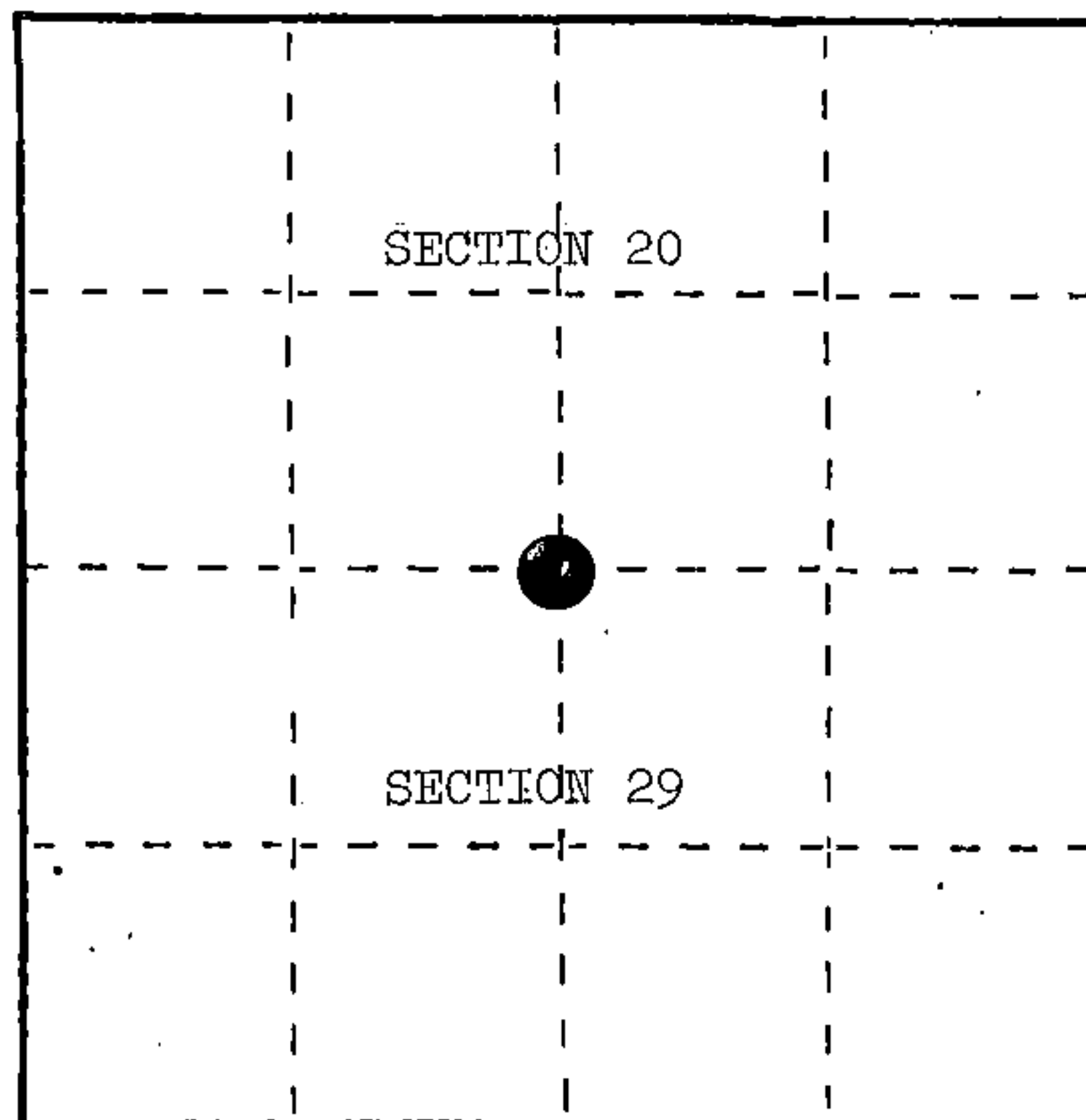
U. S. PUBLIC LAND SURVEY MONUMENT RECORD

INSTRUCTIONS: This record shall show the location of the corner and shall include all of the following nine elements (a through i).

(a) Identify the corner by reference to the U.S. public land survey system.

○ = Corner monument restored.

Quarter corner to Sections 20 and 29, T.34N., R.15E., Forest County, Wisconsin.



REGISTER'S OFFICE }
Forest County, Wis. }

Received for record this... 20th day

of... March... A. D., 1946 at

10:30 o'clock... A... M. and

recorded in Vol. ^{CORNER} RESTORATION of records

on page P. 7, T. 34. R. 15

Paul Aschenbrenner
REGISTER

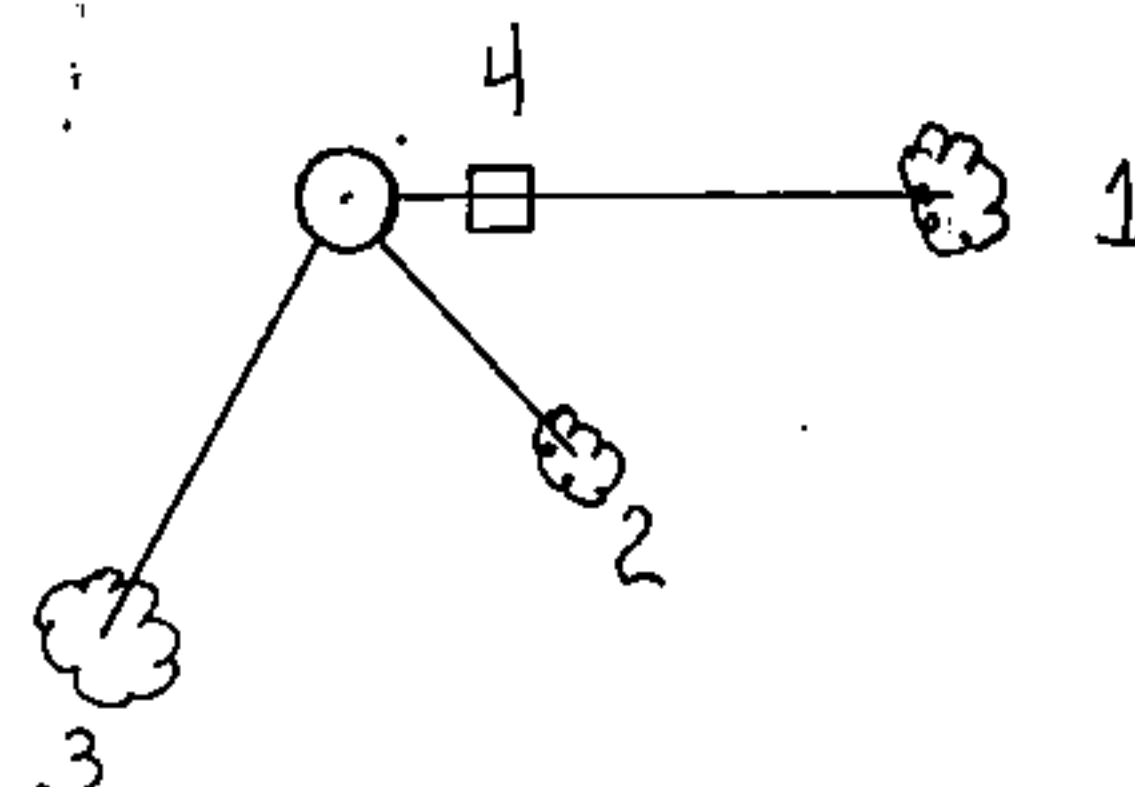
(b) Describe any record evidence, monument evidence, occupational evidence, testimonial evidence or any other material evidence you considered, and whether the monument was found or placed.

No evidence found.

(c) In the plan view drawing below, provide reference ties to at least 4 witness monuments, or, if the location is within a municipality, to at least 2 witness monuments. (Witness monuments shall be made of concrete, natural stone, iron or other equally durable material.) Describe witness monuments.

(d) Show a plan view drawing depicting the relevant monuments and reference ties which is sufficient in detail to enable accurate relocation of the corner monument if the corner monument is disturbed. Indicate north.

1. Cedar, 6", East, 16.83 feet
2. Cedar, 6", S.37°E., 9.02 feet
3. Cedar, 8", S.28°W., 14.61 feet
4. Steel Sign-Post, East, 2.30 feet



R
7

(e) Describe any material discrepancy between the location of the corner as restored or reestablished and the location of that corner as previously restored or reestablished by distance and direction. Show the discrepancy on the plan view drawing under (d), above. Show the distances between the corner as previously restored or reestablished and (1) the corner as restored or reestablished, and (2) to at least 2 of the witness monuments shown on the drawing in (d), above.

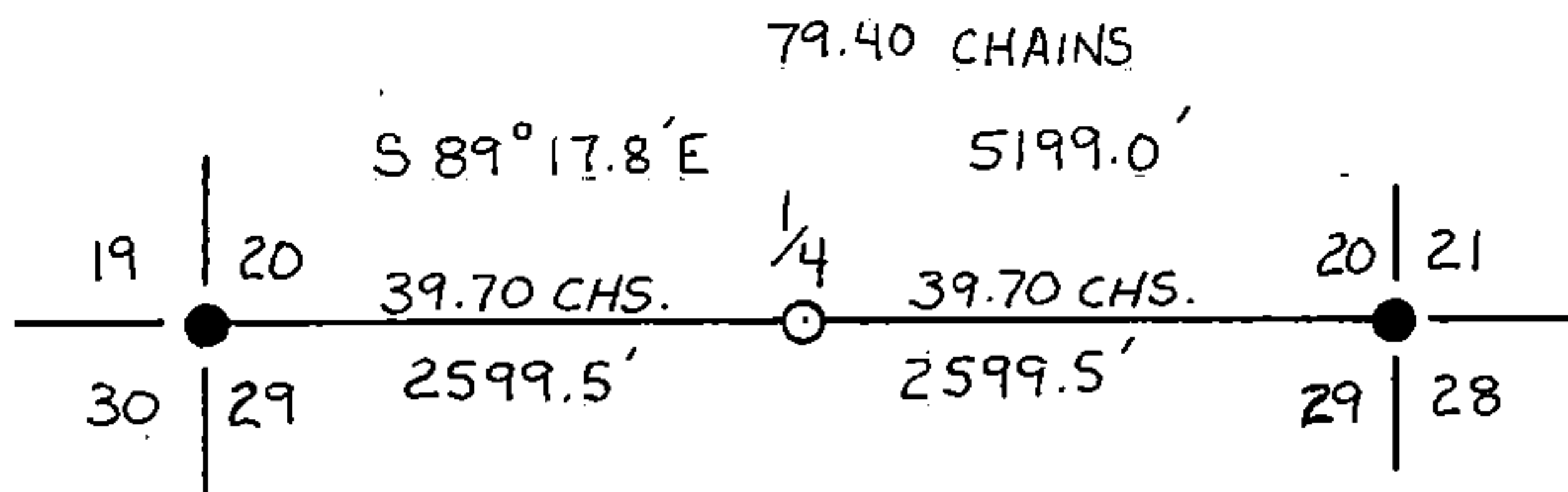
None.

(f) Was the corner restored through acceptance of (1) an obliterated evidence location, or, (2) a found perpetuated location?

Proportionate measure.

(g&h) Was the corner reestablished through lost corner proportionate methods? If so, show the method, including the directions and distances to other public land survey corners used as evidence or used for proportioning in determining the corner location?

Yes.



(1) I, Milo E. Stefan
 (type or print name) certify that the corner location shown on this record was determined by me or under my direction and control and that this U.S. Public Land Survey Monument Record is correct and complete to the best of my knowledge and belief.

Milo E. Stefan
 Signature

12/24/24
 Date

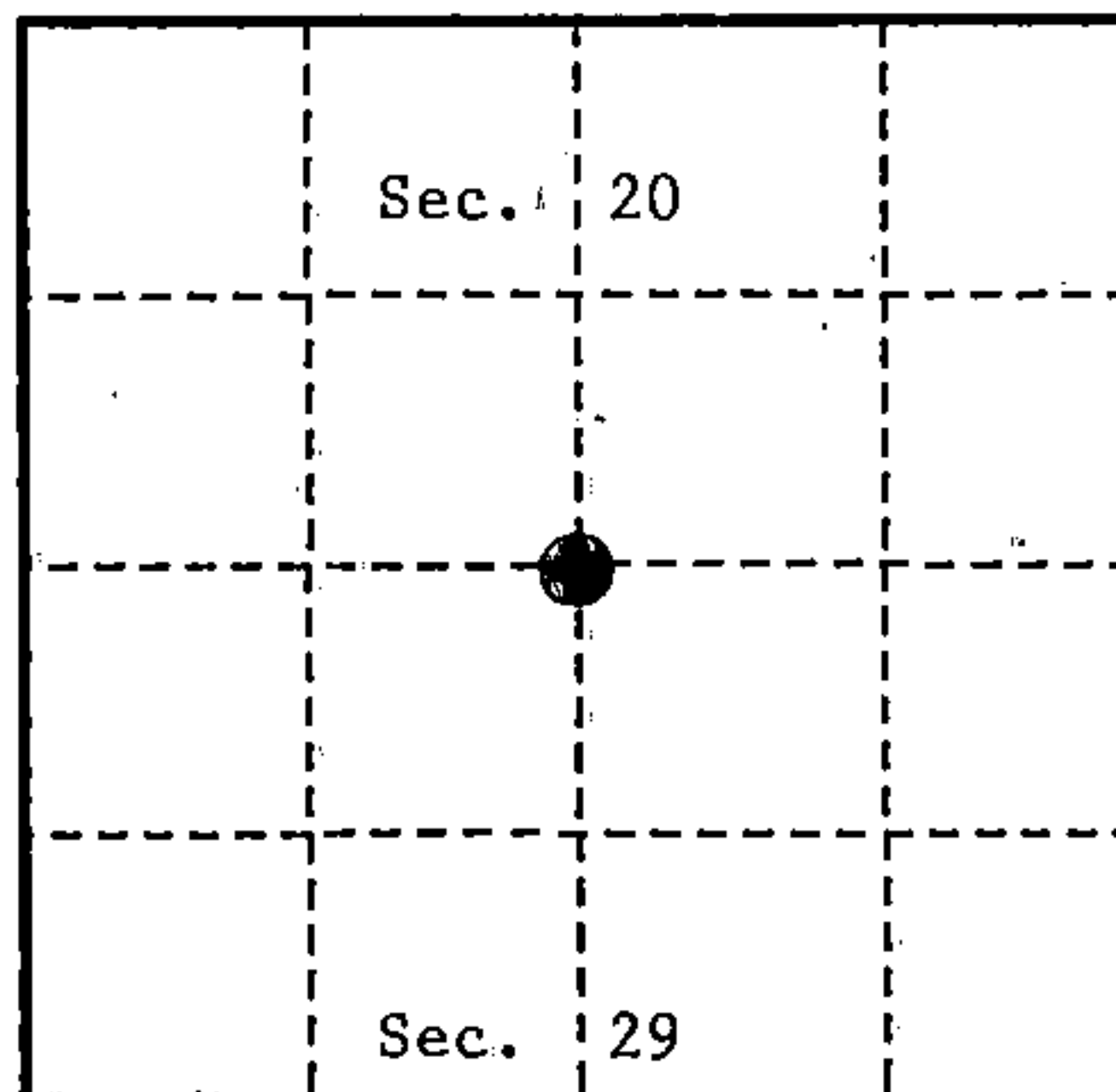
U. S. PUBLIC LAND SURVEY MONUMENT RECORD

INSTRUCTIONS:

This record shall show the location of the corner and shall include all of the following nine elements (a through i).

- (a) Identify the corner by reference to the U.S. public land survey system.
 ○ = Corner monument restored.

Quarter Corner to Sections 20 and 29,
 T.34N., R.15E., Forest County, Wisconsin



- (b) Describe any record evidence, monument evidence, occupational evidence, testimonial evidence or any other material evidence you considered, and whether the monument was found or placed.

In 1859, James McBride set a wood post with the following B.T.'s: Fir, 6", N.28°W., 18 links (11.88 feet); Cedar, 10", S.55°W., 31 links (20.44 feet).

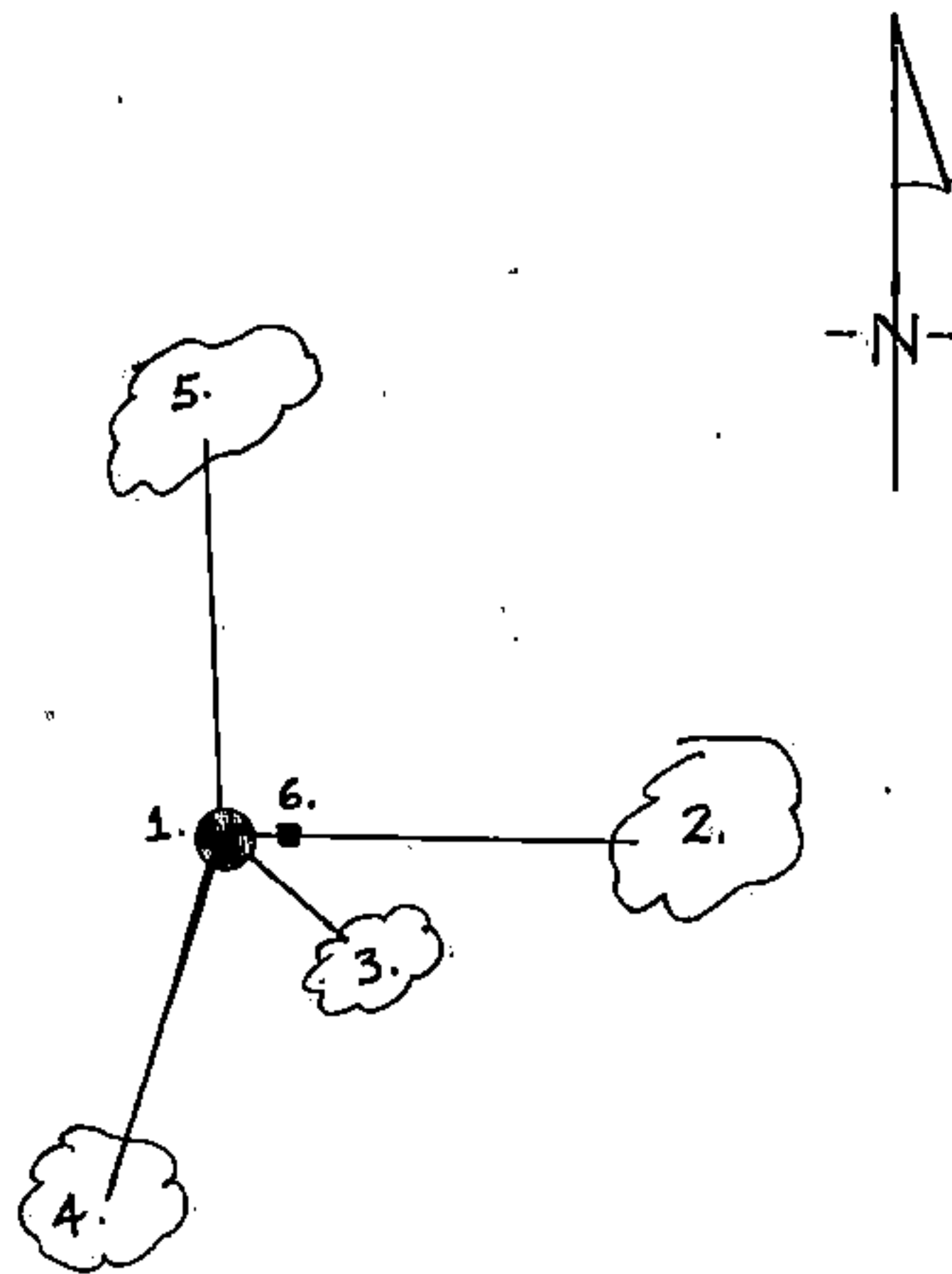
In 1983, Milo Stefan (RLS) found no evidence of any corner, original or subsequent. Set corner by proportionate measure.

In 1991, Alan Harrison (RLS) found corner and B.T.'s as per Stefan with the southeast tree dead and down. Made new B.T. to existing corner.

- (c) In the plan view drawing below, provide reference ties to at least 4 witness monuments, or, if the location is within a municipality, to at least 2 witness monuments. (witness monuments shall be made of concrete, natural stone, iron or other equally durable material.)

- (d) Show a plan view drawing depicting the relevant monuments and reference ties which is sufficient in detail to enable accurate relocation of the corner monument if the corner monument is disturbed. Indicate north.

1. 2½" x 60" aluminum monument with tablet stamped to identify the corner.
2. Cedar, 6", East, 16.83 feet (old)
3. Cedar, 6", S.37°E., 9.02 feet (dead)
4. Cedar, 8", S.28°W., 14.61 feet (old)
5. Cedar, 6", N.10°W., 18.25 feet (new)
6. Steel Sign Post, East, 2.30 feet (old)



REGISTER'S OFFICE
 Forest County, Wis.

Received for record this 8th day
 of April A.D. 1991 at
1:15 o'clock P.M. and recorded
 in Vol. CORNER RESTORATIONS
 page R-7

Paul Heimbrenner
 Register of Deeds

(e) Describe any material discrepancy between the location of the corner as restored or reestablished and the location of that corner as previously restored or reestablished by distance and direction. Show the discrepancy on the plan view drawing under (d), above. Show the distances between the corner as previously restored or reestablished and (1) the corner as restored or reestablished, and (2) to at least 2 of the witness monuments shown on the drawing in (d), above.

None.

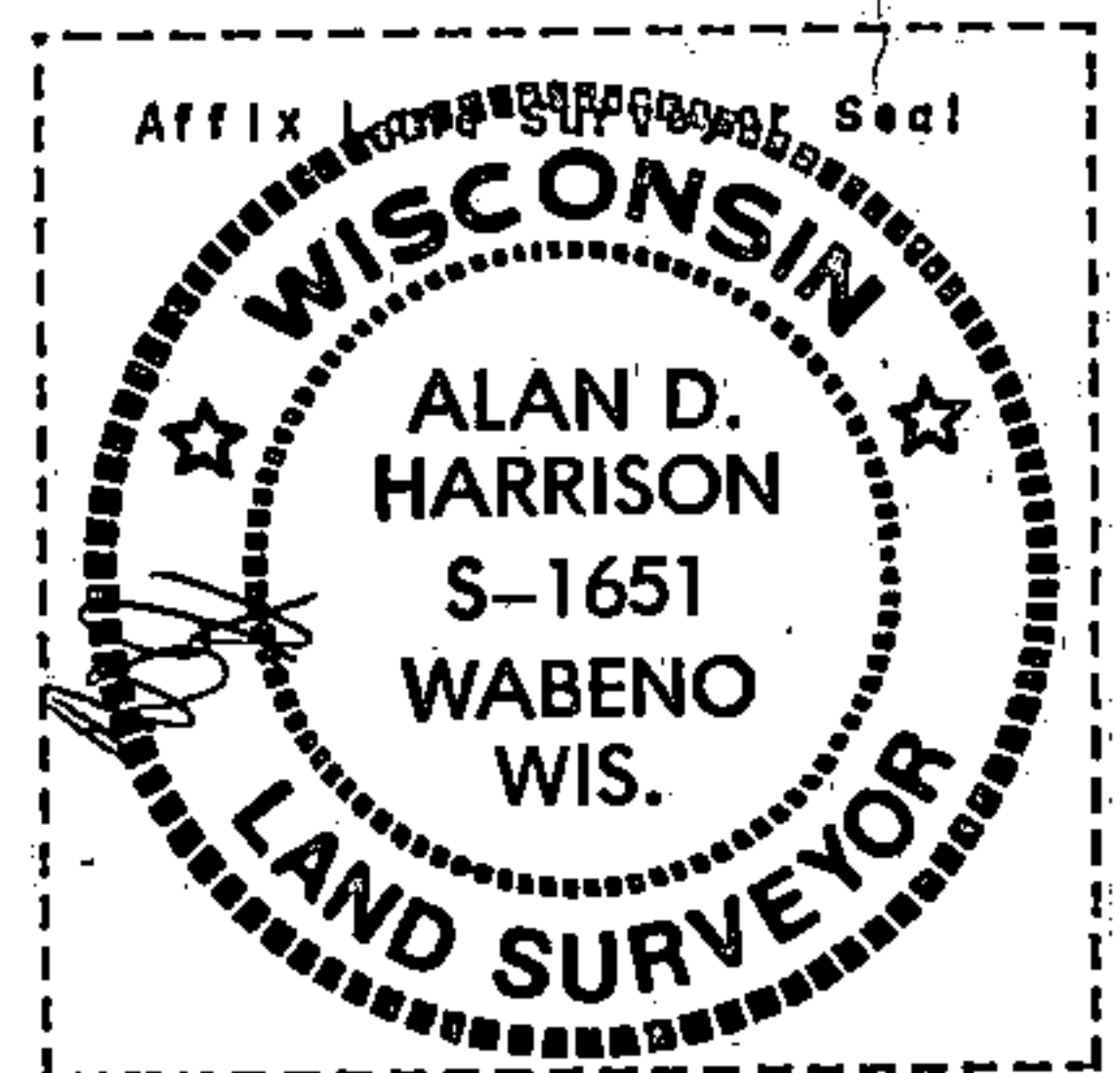
(f) Was the corner restored through acceptance of (1) an obliterated evidence location, or, (2) a found perpetuated location?

(2) a found perpetuated location

(g & h) Was the corner reestablished through lost corner proportionate methods? If so, show the method, including the directions and distances to other public land survey corners used as evidence or used for proportioning in determining the corner location?

No.

(1) I, Alan D. Harrison
(type or print name) certify that the corner location shown on this record was determined by me or under my direction and control and that this U.S. Public Land Survey Monument Record is correct and complete to the best of my knowledge and belief.



Alan D. Harrison
Signature

4/4/91
Date

CERTIFICATE READY FOR FILING:

Dale B. Staeg
District Ranger