

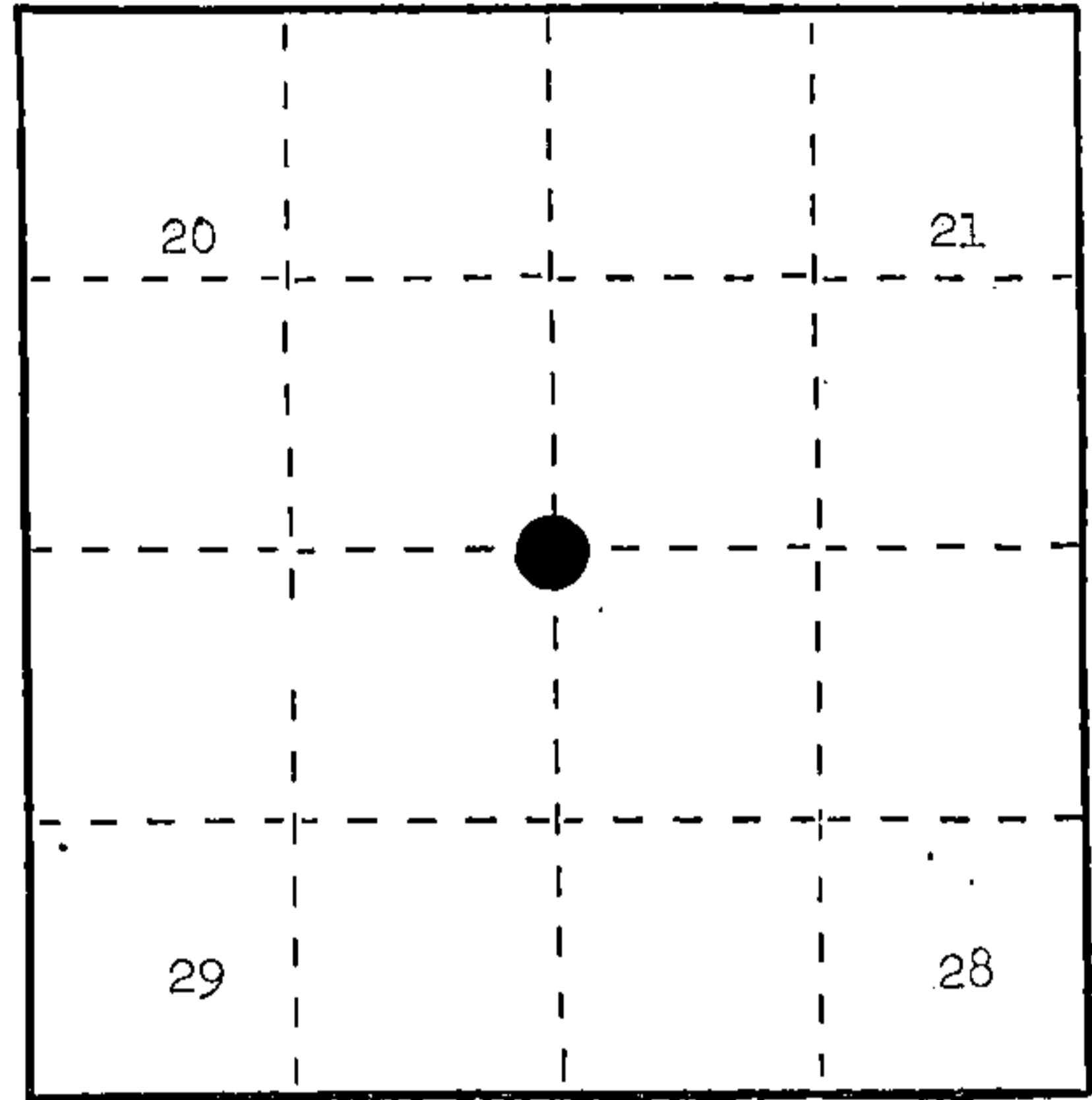
U. S. PUBLIC LAND SURVEY MONUMENT RECORD

I N S T R U C T I O N S : This record shall show the location of the corner and shall include all of the following nine elements (a through i).

(a) Identify the corner by reference to the U.S. public land survey system.

○ = Corner monument restored.

Corner to Sections 20, 21, 28, and 29, T.34N., R.15E.



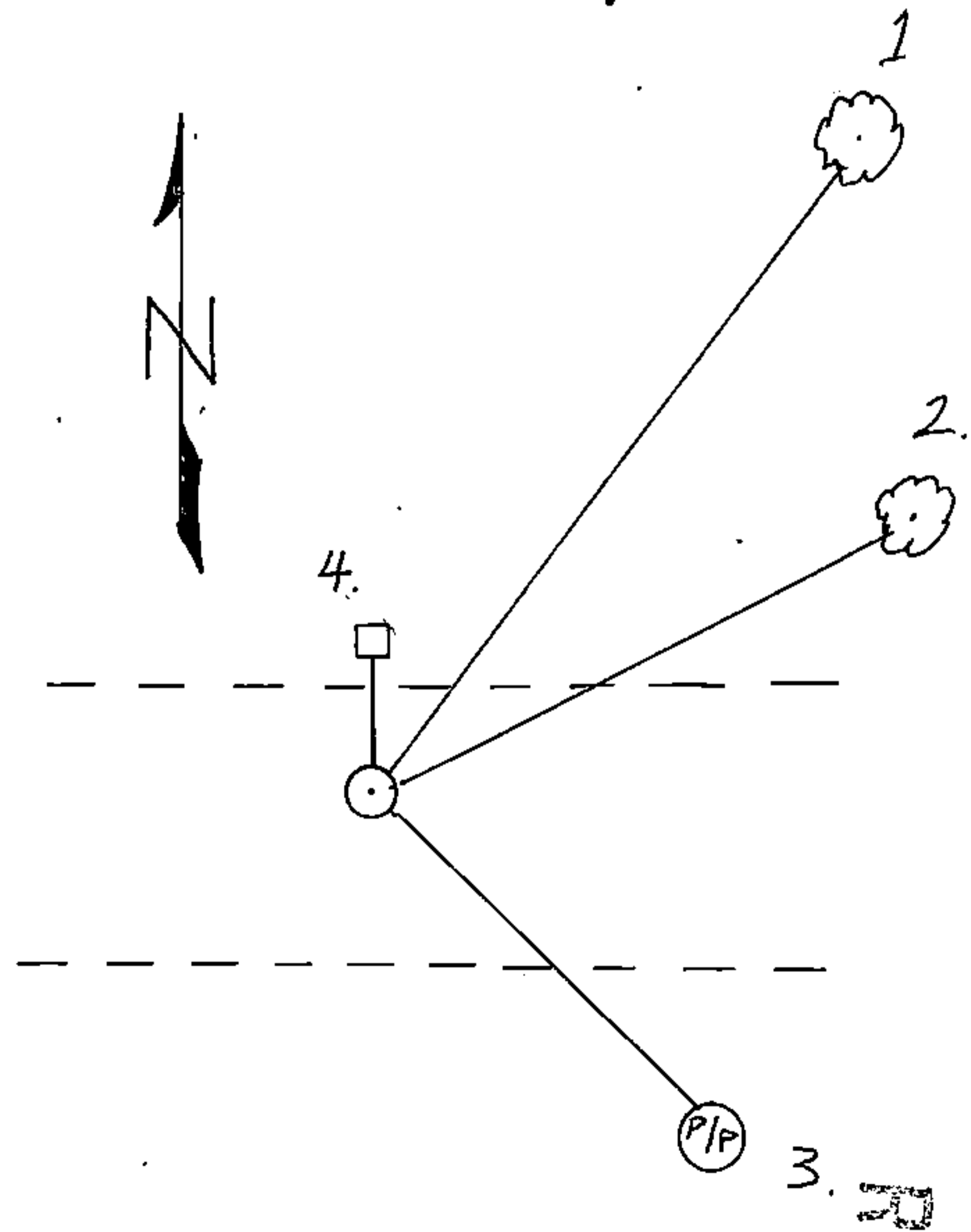
(b) Describe any record evidence, monument evidence, occupational evidence, testimonial evidence or any other material evidence you considered, and whether the monument was found or placed.

Corner restored by double proportionate measure. Placed a 2" x 36" aluminum monument 6" below surface of gravel access road.

(c) In the plan view drawing below, provide reference ties to at least 4 witness monuments, or, if the location is within a municipality, to at least 2 witness monuments. (Witness monuments shall be made of concrete, natural stone, iron or other equally durable material.) Describe witness monuments.

(d) Show a plan view drawing depicting the relevant monuments and reference ties which is sufficient in detail to enable accurate relocation of the corner monument if the corner monument is disturbed. Indicate north.

1. Red Pine, 5", N.29°E., 136.50 feet
2. Elm, 14", N.62°E., 85.14 feet
3. Power Pole, S.47°E., 45.55 feet
4. Steel Sign Post, North, 11.30 feet



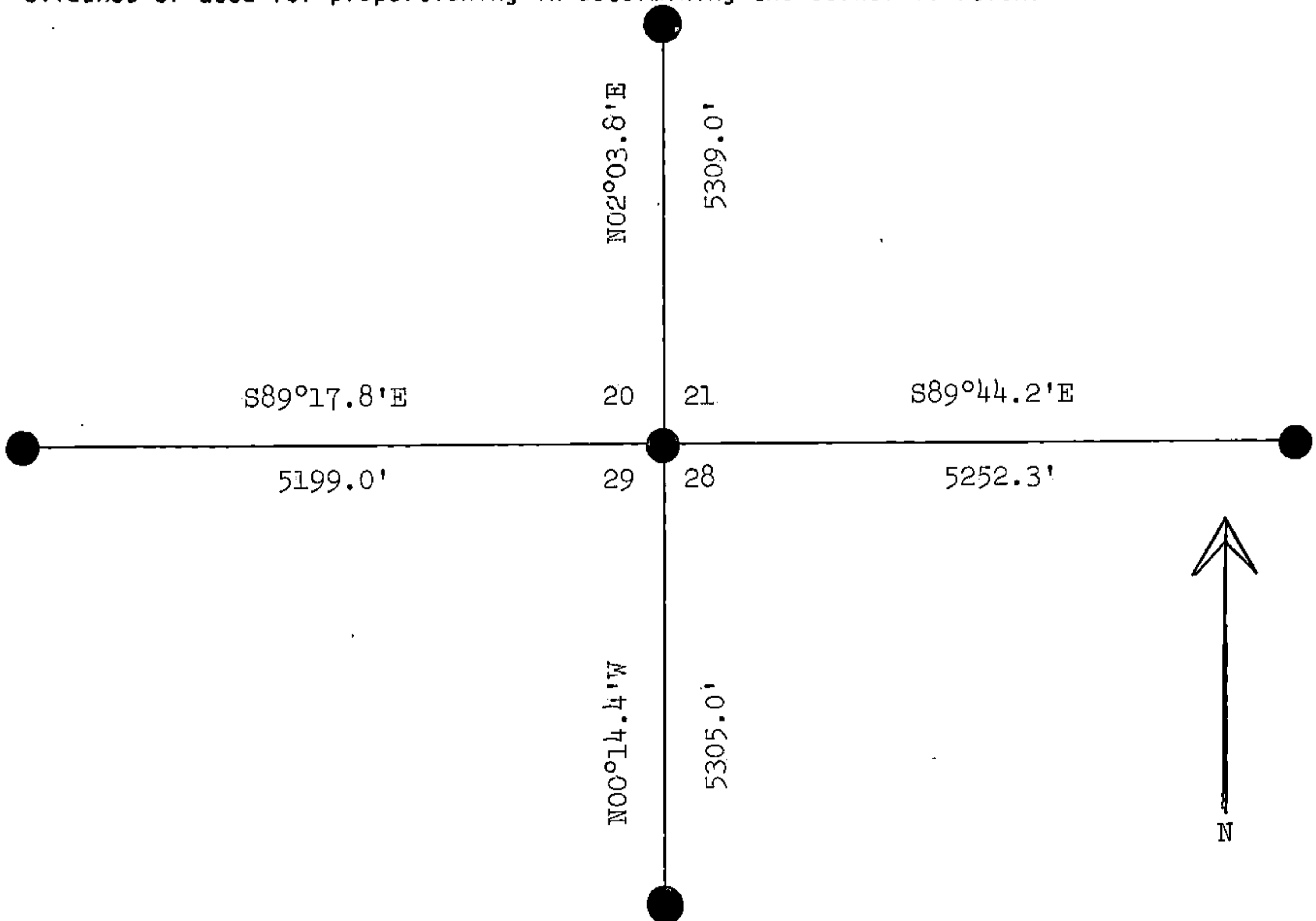
REGISTER'S OFFICE }
 Forest County, Wis. }
 Received for record this... 16th day
 of... January... A. D., 1985 at
 ...9:30 o'clock... A.... M. and
 recorded in Vol. CORNER RESTORATION
 on page R-9
Paul Aschenbrenner
 REGISTER

(e) Describe any material discrepancy between the location of the corner as restored or reestablished and the location of that corner as previously restored or reestablished by distance and direction. Show the discrepancy on the plan view drawing under (d), above. Show the distances between the corner as previously restored or reestablished and (1) the corner as restored or reestablished, and (2) to at least 2 of the witness monuments shown on the drawing in (d), above.

(f) Was the corner restored through acceptance of (1) an obliterated evidence location, or, (2) a found perpetuated location?

Lost corner position.

(g&h) Was the corner reestablished through lost corner proportionate methods? If so, show the method, including the directions and distances to other public land survey corners used as evidence or used for proportioning in determining the corner location?



(1) I, Milo E. Stefan
 (type or print name) certify that the corner location shown on this record was determined by me or under my direction and control and that this U.S. Public Land Survey Monument Record is correct and complete to the best of my knowledge and belief.

Milo E. Stefan
 Signature

3/2/84
 Date

Document Number
182718

REGISTER'S OFFICE
Forest County, Wis.
Received for record this 29th day
of January A.D., 2004 at
9:00 o'clock A.M. and recorded
in Vol. Corner Restoration
page R-9
Kay Swanson, Deputy
Register of Deeds

U.S. PUBLIC LAND SURVEY MONUMENT RECORD

(AS REQUIRED BY S. A-E 5.02, WI ADM. CODE)

HISTORY OF ORIGINAL CORNER ESTABLISHMENT AND SUBSEQUENT RESTORATIONS AND DESCRIPTION OF ANY RECORD, MONUMENT, OCCUPATIONAL, TESTIMONIAL, OR OTHER EVIDENCE CONSIDERED:

Fd. 60D nail at corner position. Removed nail and searched for 2" Aluminum monument as called for in corner report R9 (Doc. No. 127127). Could not find 2" Aluminum monument, replaced with 1" pipe w/survey cap P.S. #S-1641.

CORNER WAS: (CHECK ALL THAT APPLY)

- RESTORED THROUGH ACCEPTANCE OF AN OBLITERATED LOCATION
- RESTORED THROUGH ACCEPTANCE OF A FOUND PERPETUATED LOCATION
- CONSIDERED A LOST CORNER AND REESTABLISHED THROUGH LOST CORNER PROPORTIONATE METHODS (INCLUDING A PLAN VIEW DRAWING SHOWING DISTANCES AND DIRECTIONS TO OTHER PUBLIC LAND SURVEY CORNERS USED FOR PROPORTIONING AND DETERMINING THE CORNER LOCATION)
- RESTORED OR REESTABLISHED IN A LOCATION THAT DIFFERS FROM A PREVIOUS RESTORATION OF REESTABLISHMENT (INCLUDE A PLAN VIEW DRAWING AND INDICATE WHAT WAS SET AND/OR FOUND)

DESCRIBE THE MONUMENT AND ACCESSORIES USED TO PERPETUATE THE LOCATION OF THIS CORNER. (INCLUDE A PLAN VIEW DRAWING AND INDICATE WHAT WAS SET AND/OR FOUND)

Set 1" Iron Pipe w/cap. P.S. #S-1641

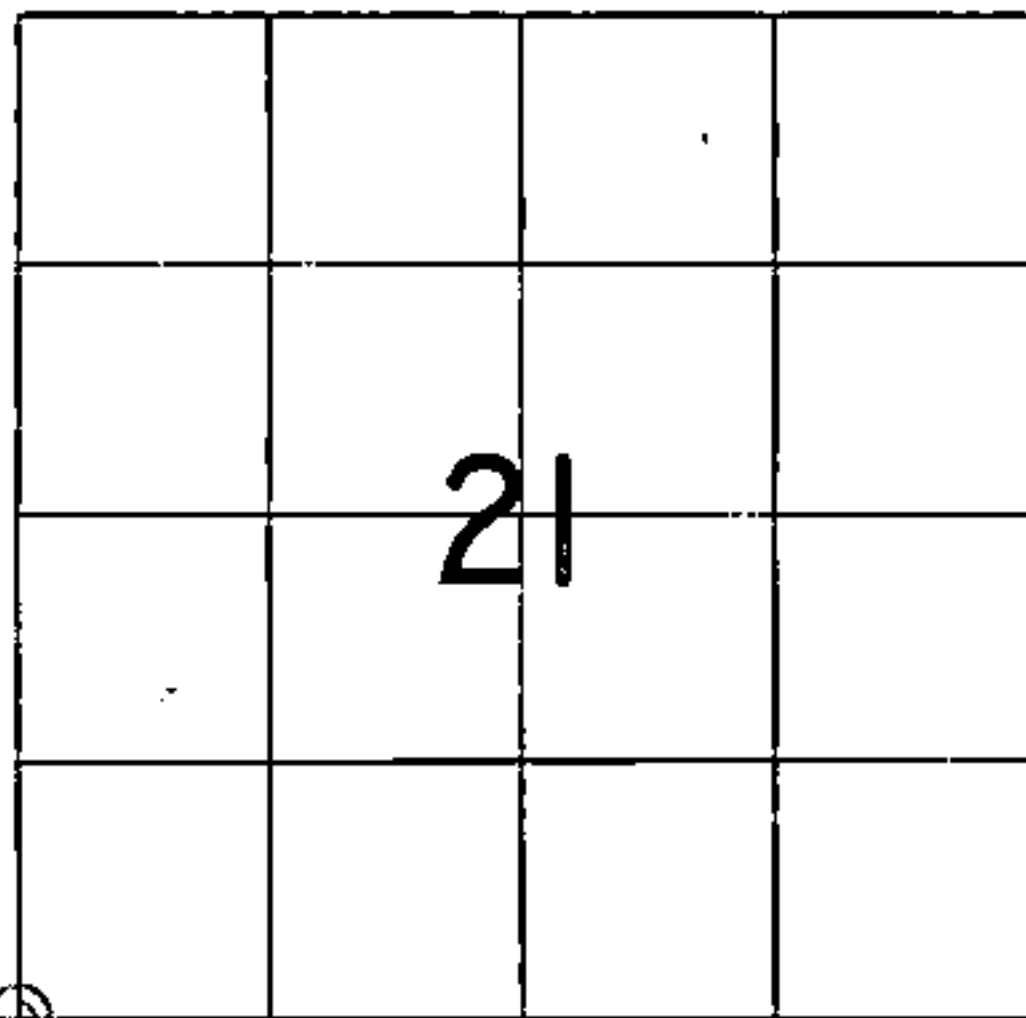
Existing Witnesses:

Red Pine 10"	N32E	136.50'(R), 136.55'(M) Fd. nail
Power Pole	S52E	45.55'(R), 45.79'(M) Fd. nail

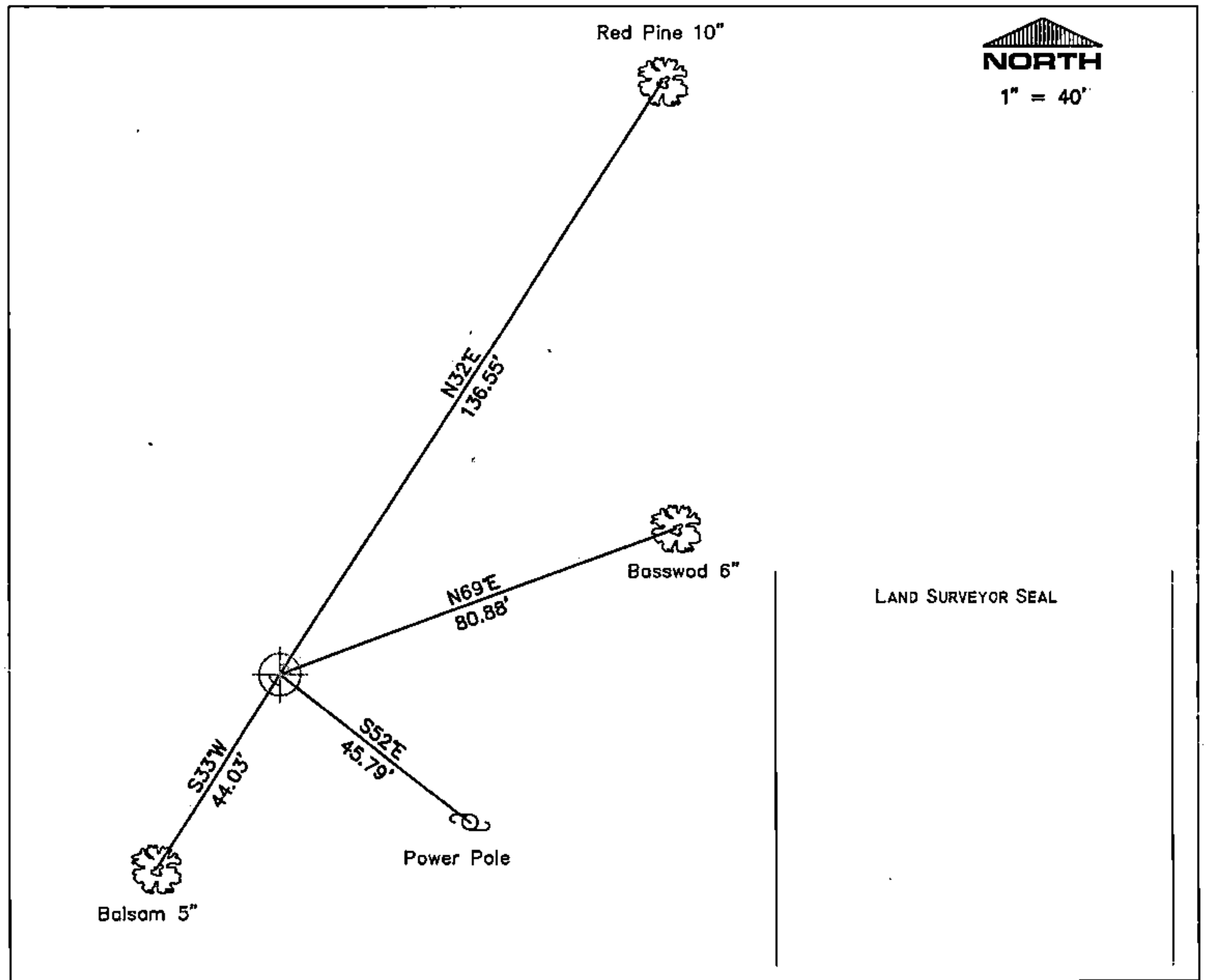
Set Witnesses:

Basswood 6"	S33W	44.03'-set d.h. nail
Balsam 5"	N69E	80.88'-set d.h. nail

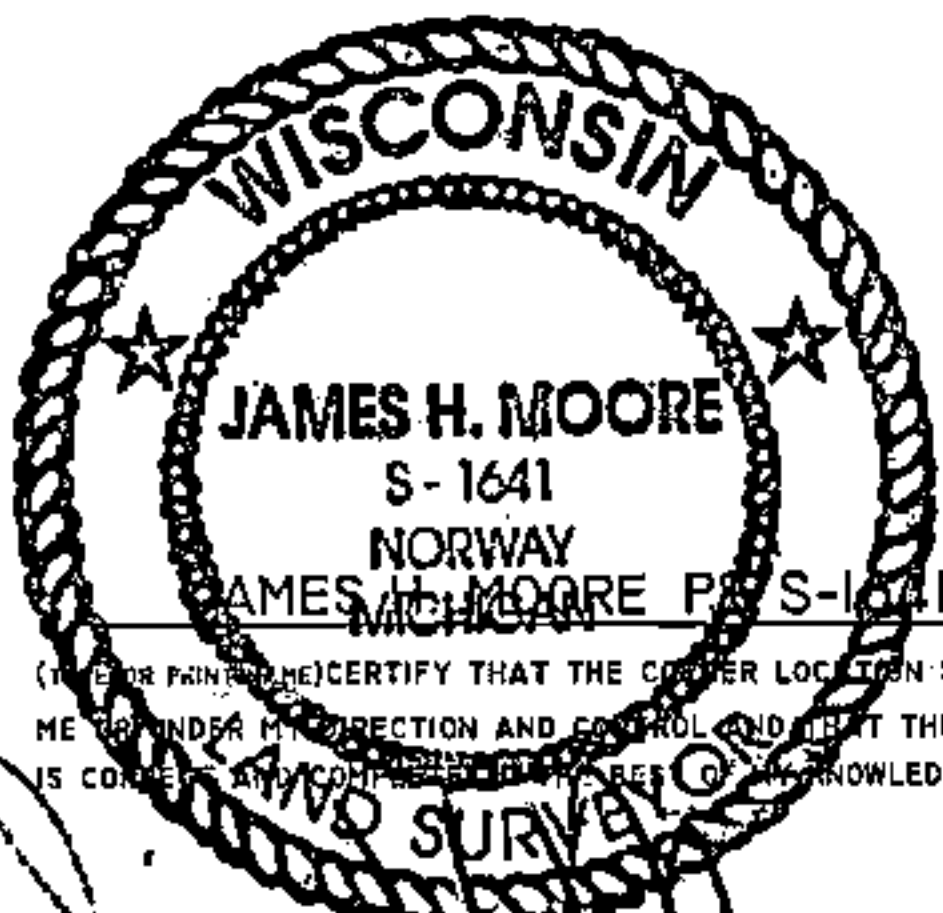
THE SOUTHWEST
CORNER OF SECTION 21,
T. 34 N., R. 15 E.,
FOURTH PRINCIPAL MERIDIAN,
FOREST COUNTY, WISCONSIN



⊕ = LOCATION OF CORNER



LAND SURVEYOR SEAL



SIGNATURE

DATE

1-27-04

INDEX No. R-9

4341520 0000

R-9