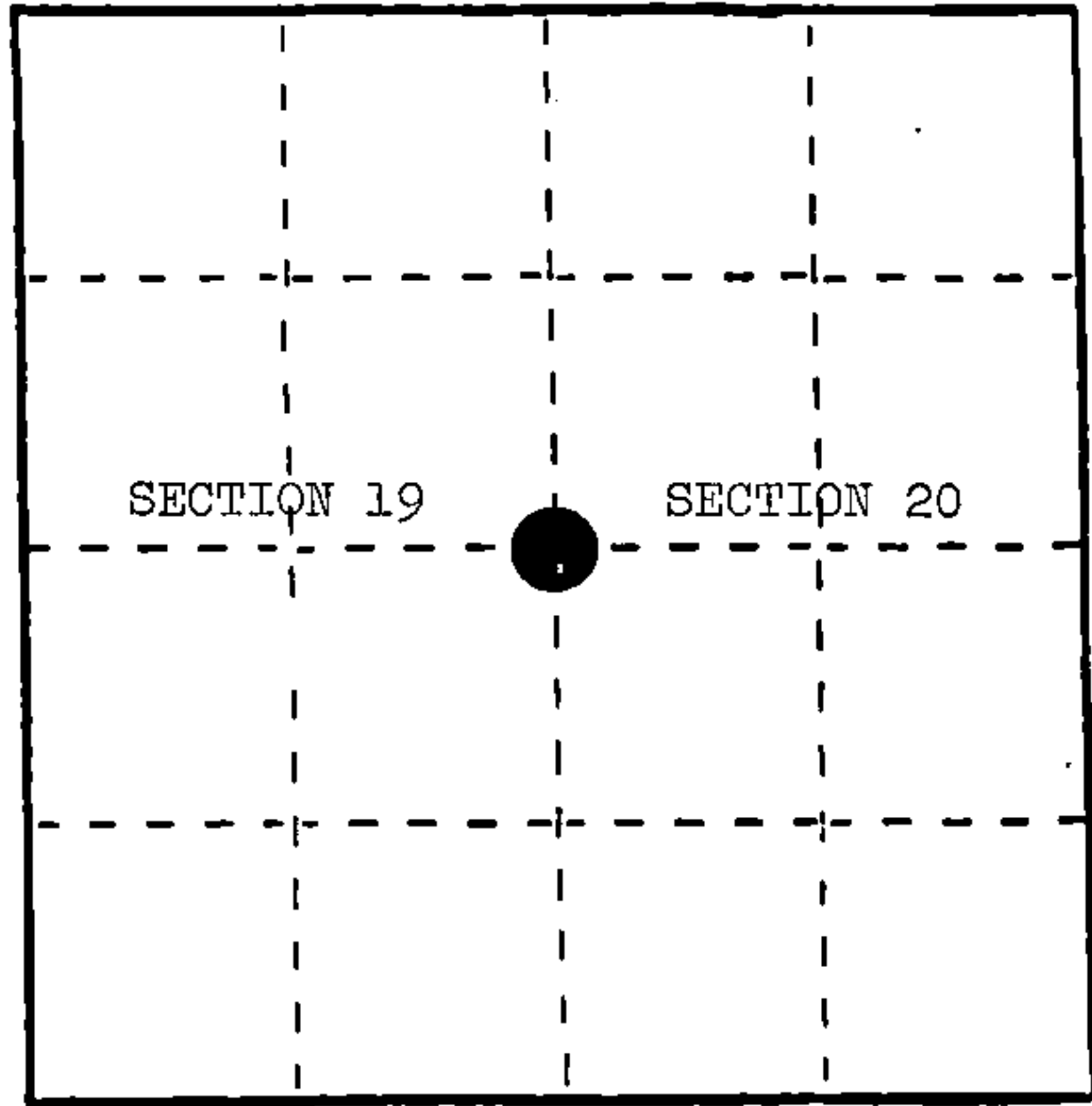


U. S. PUBLIC LAND SURVEY MONUMENT RECORD

INSTRUCTIONS: This record shall show the location of the corner and shall include all of the following nine elements (a through i).

- (a) Identify the corner by reference to the U.S. public land survey system.
- = Corner monument restored.

Quarter corner to Sections 19 and 20, T.34N., R.15E.



REGISTER'S OFFICE
 Forest County, Wis.
 Received for record this 14th day
 of March A.D. 1986 at
10:25 o'clock A.M. and recorded
 in Vol. CORNER RESTORATION'S
 page P-5
Paul Aschenbrenner
 Register of Deeds

- (b) Describe any record evidence, monument evidence, occupational evidence, testimonial evidence or any other material evidence you considered, and whether the monument was found or placed.

In 1859, James McBride set post with the following BTs: Spruce, 10", N.47°E., 36 links; Cedar, 8", N.22°W., 82 links.

January, 1909, J. J. Melindy found 5" x 5" Cedar post marked 1/4 S. Melindy stated post was set by W. L. Harris (U. S. Deputy Surveyor) by lost methods.

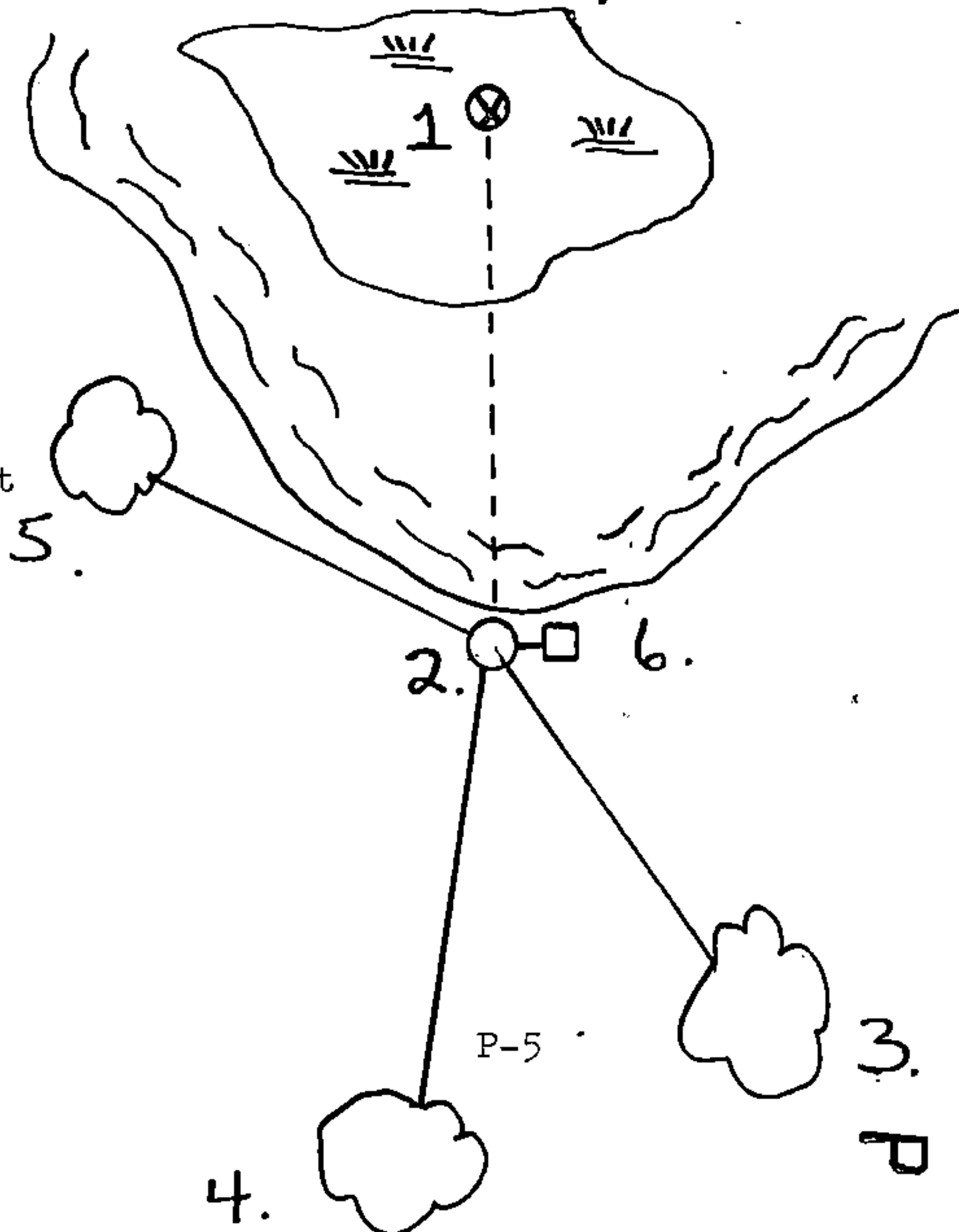
March 24, 1983, witness corner established southerly along the section line 745.50 feet.

May, 1985, Milo Stefan evaluated the Melindy survey of Section 19 (1909). This position varies only slightly from the 1983 witnessed position.

- (c) In the plan view drawing below, provide reference ties to at least 4 witness monuments, or, if the location is within a municipality, to at least 2 witness monuments. (Witness monuments shall be made of concrete, natural stone, iron or other equally durable material.) Describe witness monuments.

- (d) Show a plan view drawing depicting the relevant monuments and reference ties which is sufficient in detail to enable accurate relocation of the corner monument if the corner monument is disturbed. Indicate north.

- Quarter position in wet, floating bog-- not monumented.
- Witness corner is a 2" x 36" aluminum monument
- Sugar Maple, 4", S.33°E., 46.75 feet
- Sugar Maple, 7", S.7°W., 60.76 feet
- Basswood, 14", N.75°W., 49.27 feet
- Steel Sign Post, East, 1.8 feet



P 5

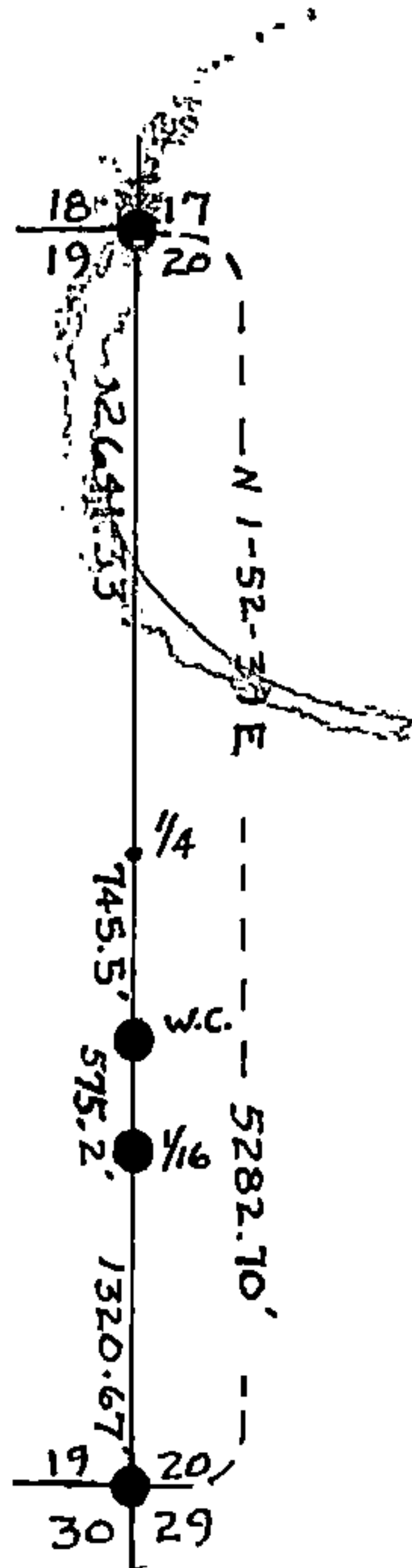
(e) Describe any material discrepancy between the location of the corner as restored or reestablished and the location of that corner as previously restored or reestablished by distance and direction. Show the discrepancy on the plan view drawing under (d), above. Show the distances between the corner as previously restored or reestablished and (1) the corner as restored or reestablished, and (2) to at least 2 of the witness monuments shown on the drawing in (d), above.

(f) Was the corner restored through acceptance of (1) an obliterated evidence location, or, (2) a found perpetuated location?

No.

(g&h) Was the corner reestablished through lost corner proportionate methods? If so, show the method, including the directions and distances to other public land survey corners used as evidence or used for proportioning in determining the corner location?

Yes. Corner was set on line and midpoint between corners to north and south.



(1) 1. Milo E. Stefan
 (type or print name) certify that the corner location shown on this record was determined by me or under my direction and control and that this U.S. Public Land Survey Monument Record is correct and complete to the best of my knowledge and belief.

Milo E. Stefan
 Signature

2/19/86
 Date