

Document Number

209972

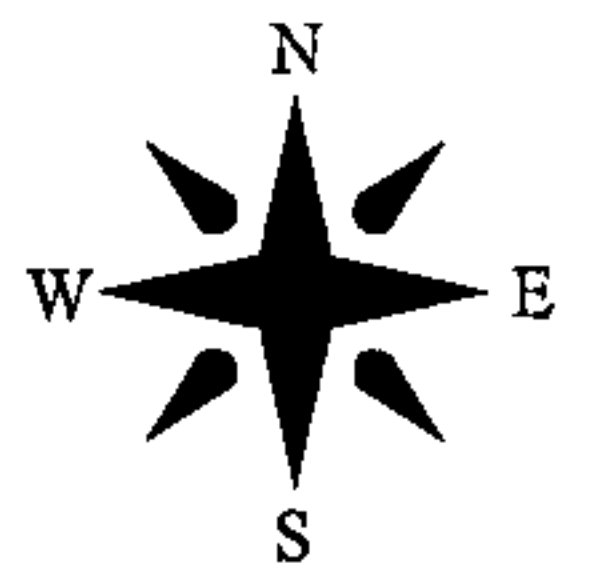
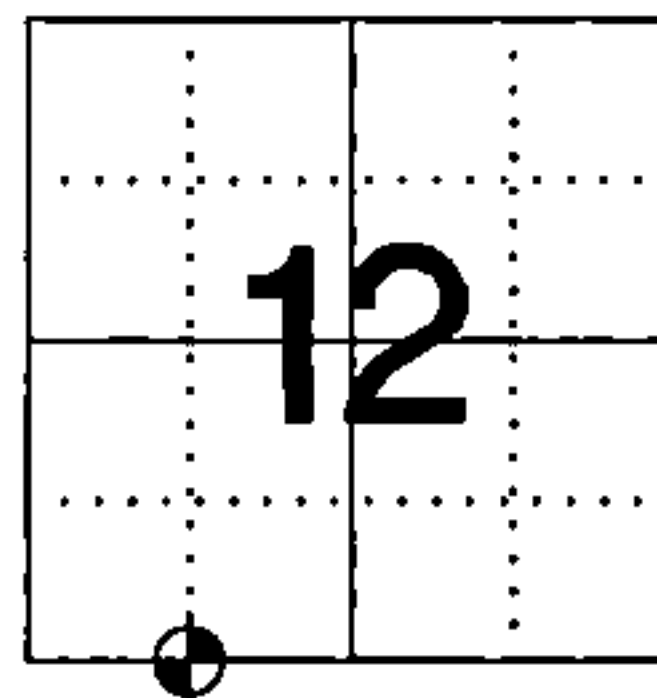
REGISTER'S OFFICE
Forest County, Wis.
Received for record this 17th day
of September A.D., 2012 at
9:00 o'clock A.M. and recorded
in Vol. CORNER RESTORATION
page 1-22
Cheryl M. Miller, Deputy
Register of Deeds

**U.S. PUBLIC LAND SURVEY MONUMENT RECORD
FOREST COUNTY, WISCONSIN**

IN ACCORDANCE WITH WISCONSIN ADMINISTRATIVE CODE, CHAPTER A-E 7.08 (3) (A)-(I)

LOCATION: CHAPTER A-E 7.08 (3): (A)

SW CORNER SE $\frac{1}{4}$ SW $\frac{1}{4}$
SECTION 12 TOWNSHIP 34 NORTH RANGE 15 EAST
TYPE OF MONUMENT: MAG NAIL SET OVER $\frac{3}{4}$ in. REBAR
WITH ALUMINUM CAP
HORIZONTAL DATUM: NAD 83(2007) GRID
FOREST COUNTY COORDINATES
NORTHING: 521324.652
EASTING: 921733.446



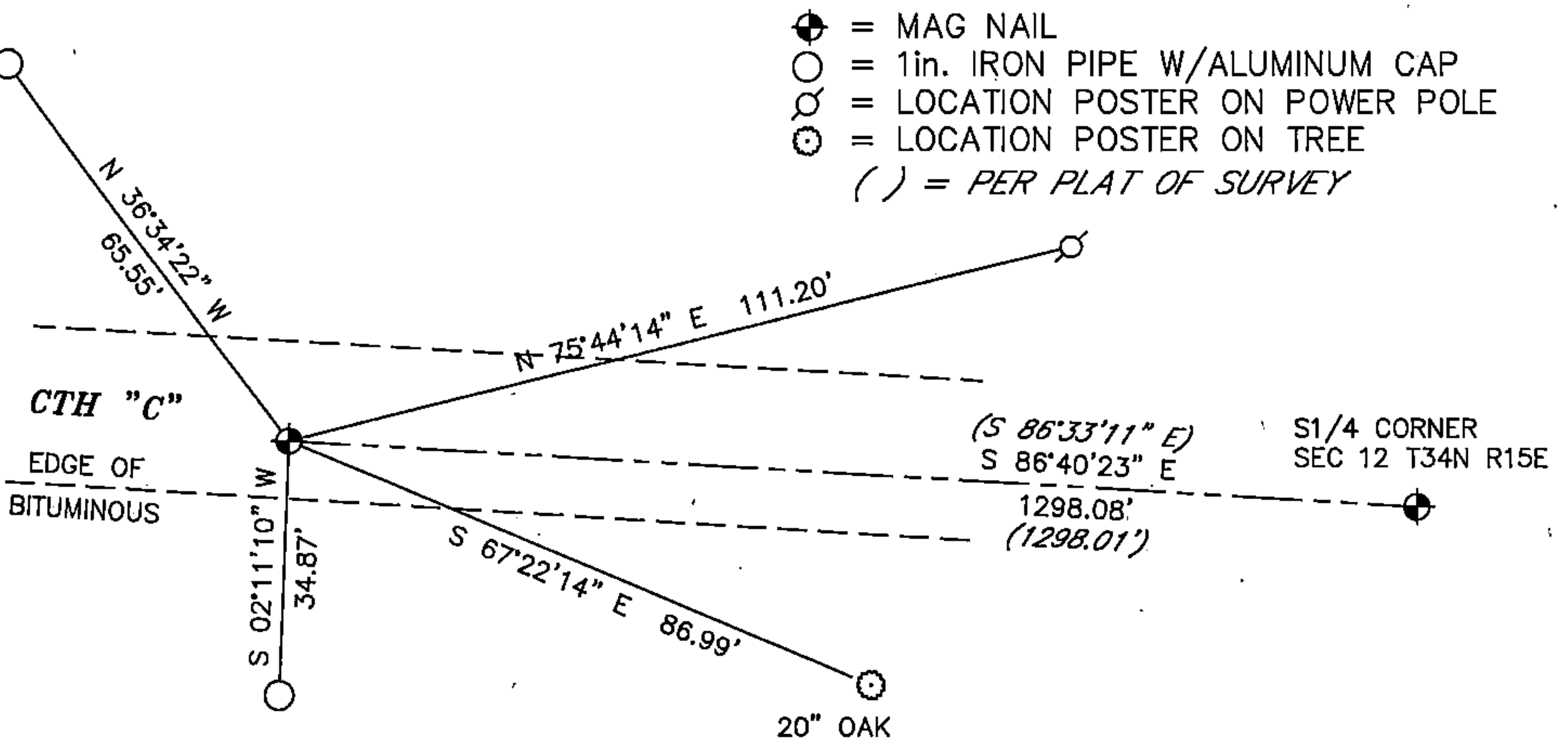
RECOVERY PROCEDURES: CHAPTER A-E 7.08 (3): (B), (F), (G), (H)

1993: PLAT OF SURVEY BY RLS 1651 SET RAILROAD SPIKE AT CORNER LOCATION. CORNER ESTABLISHED AT THE INTERSECTION OF THE SOUTH AND WEST SIXTEENTH LINES OF SECTION 12, ELM 6" S 39° W 25.16', SUGAR MAPLE 5" N 34° W 27.14', STEEL SIGN POST NORTH 1.08'

7 JUNE 2012: FOUND CALLED FOR RAILROAD SPIKE AND RECORDED LOCATION PRIOR TO CTH "C" RESURFACE PROJECT

30 JULY 2012: SET $\frac{3}{4}$ in. X 24in. REBAR 1.50lbs/ft. WITH ALUMINUM CAP BELOW BITUMINOUS AND THEN SET A MAG NAIL IN BITUMINOUS OVER REBAR AFTER ROAD CONSTRUCTION

PLAN VIEW: CHAPTER A-E 7.08 (3): (C), (D), (E),



SURVEYOR'S CERTIFICATE: CHAPTER 7.08 (3): (I)

THE UNDERSIGNED HEREBY CERTIFIES THAT THE U.S. PUBLIC LAND SURVEY MONUMENT RECORD IS CORRECT AND COMPLETE TO THE BEST OF MY KNOWLEDGE AND BELIEF.



Darren B. Krzanowski
DARREN B. KRZANOWSKI
WISCONSIN LAND SURVEYOR S-2663
DATED THIS 2ND DAY OF AUGUST 2012

122

43415120030