

Document Number

209971

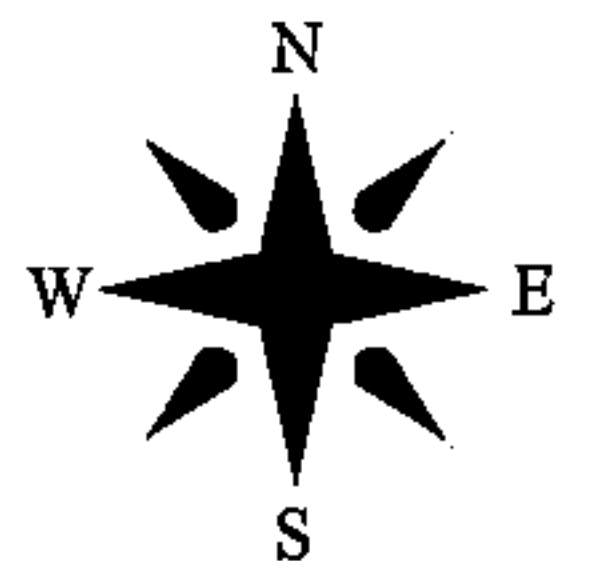
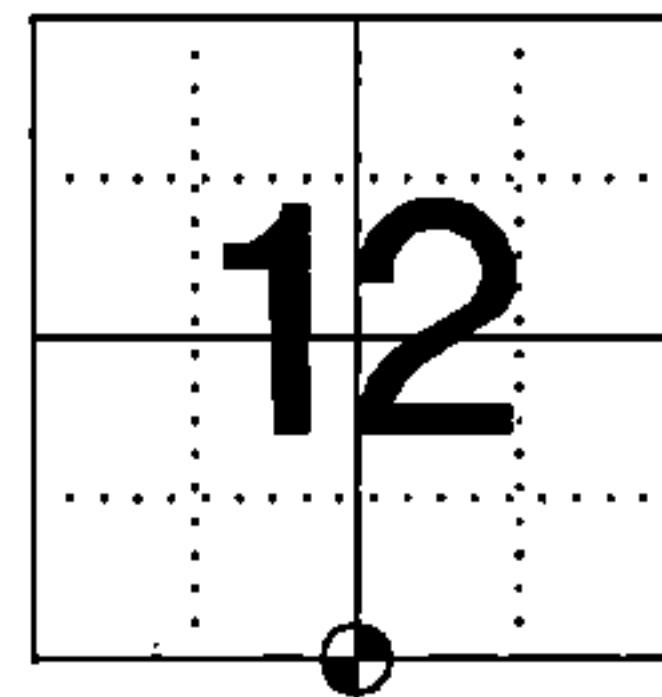
REGISTER'S OFFICE
Forest County, Wis.
Received for record this 17th day
of September A.D., 2012 at
9:00 o'clock A.M. and recorded
in Vol. OWNER RESTORATION
page 1-23
Christina Deady
Register of Deeds

**U.S. PUBLIC LAND SURVEY MONUMENT RECORD
FOREST COUNTY, WISCONSIN**

IN ACCORDANCE WITH WISCONSIN ADMINISTRATIVE CODE, CHAPTER A-E 7.08 (3) (A)-(I)

LOCATION: CHAPTER A-E 7.08 (3): (A)

SECTION 12 TOWNSHIP 34 NORTH RANGE 15 EAST
TYPE OF CORNER: SOUTH QUARTER CORNER
TYPE OF MONUMENT: MAG NAIL SET OVER 3/4in. X 24in.
REBAR WITH ALUMINUM CAP
HORIZONTAL DATUM: NAD 83(2007) GRID
FOREST COUNTY COORDINATES
NORTHING: 521249.323
EASTING: 923029.336



RECOVERY PROCEDURES: CHAPTER A-E 7.08 (3): (B), (F), (G), (H)

5-15-00: SURVEY BY RLS 1651 CALLS FOR A RAILROAD SPIKE AT CORNER LOCATION

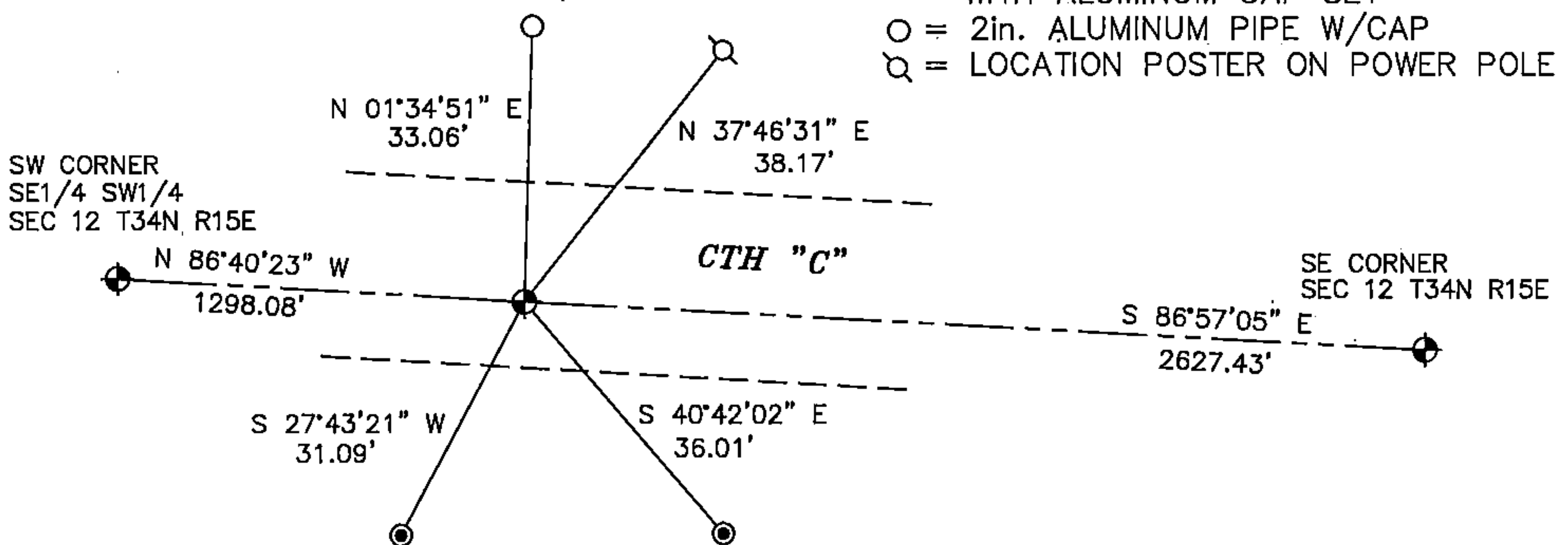
1993: PLAT OF SURVEY OF SECTION 12 T34N R15E, BY RLS 1651 CALLS FOR A RAILROAD SPIKE AT CORNER LOCATION. CORNER RESTORED 33 FEET SOUTH OF THE INTERSECTION OF FENCES FROM NORTH, EAST AND WEST. CORNER FALLS 3.5 FEET SOUTH OF CENTERLINE OF CTH "C". WITNESS CORNER 2 1/2"X36" NORTH 33.00 FEET, POWER POLE #3415-12R16 N 40° E 38.68 FEET, SUGAR MAPLE 6" S 22° E 36.21 FEET, SUGAR MAPLE 11" S 56° E 57.31 FEET, STEEL SIGN POST NORTH 34.15 FEET

7 JUNE 2012: FOUND PK NAIL ACCEPTED AND RECORDED LOCATION PRIOR TO CTH "C" RESURFACE PROJECT

30 JULY 2012: SET 3/4in. X 24in. REBAR 1.50lbs/ft. IN ROAD BASE AT CORNER, THEN SET A MAG NAIL IN BITUMINOUS OVER REBAR AFTER COMPLETION OF CTH "C" RESURFACE PROJECT

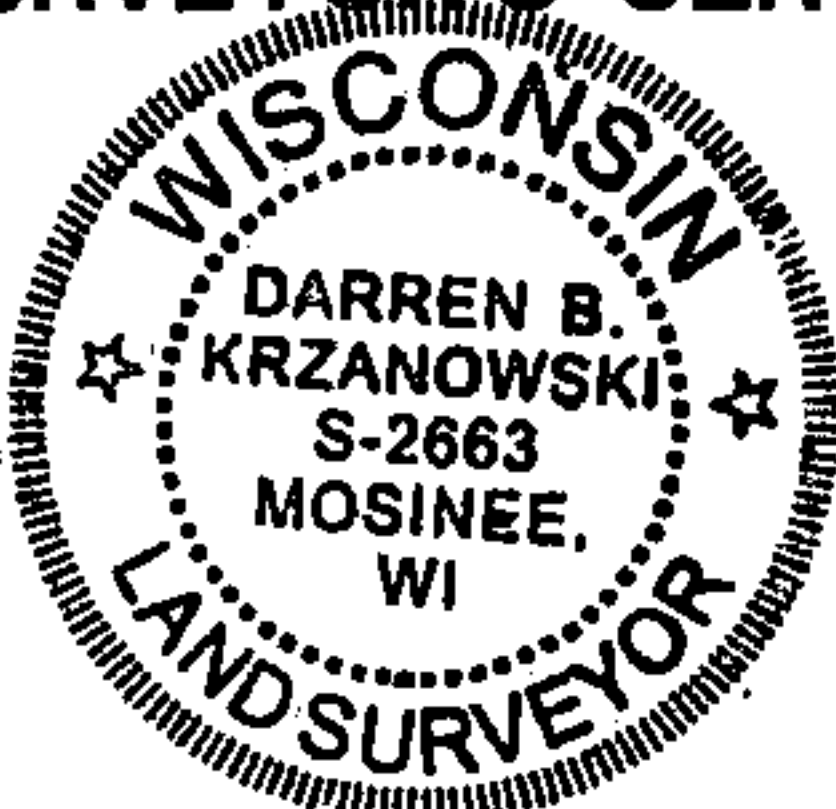
PLAN VIEW: CHAPTER A-E 7.08 (3): (C), (D), (E).

- ⊕ = MAG NAIL SET
- ⊙ = 3/4in. X 24in. REBAR 1.50 lbs/ft. WITH ALUMINUM CAP SET
- = 2in. ALUMINUM PIPE W/CAP
- ⊗ = LOCATION POSTER ON POWER POLE



SURVEYOR'S CERTIFICATE: CHAPTER 7.08 (3): (I)

THE UNDERSIGNED HEREBY CERTIFIES THAT THE U.S. PUBLIC LAND SURVEY MONUMENT RECORD IS CORRECT AND COMPLETE TO THE BEST OF MY KNOWLEDGE AND BELIEF.



Darren B. Krzanowski
DARREN B. KRZANOWSKI
WISCONSIN LAND SURVEYOR S-2663
DATED THIS 2nd DAY OF AUGUST 2012

43415120020