

Document Number
177947

U.S. PUBLIC LAND SURVEY MONUMENT RECORD

(As Required by WI Adm. Code)

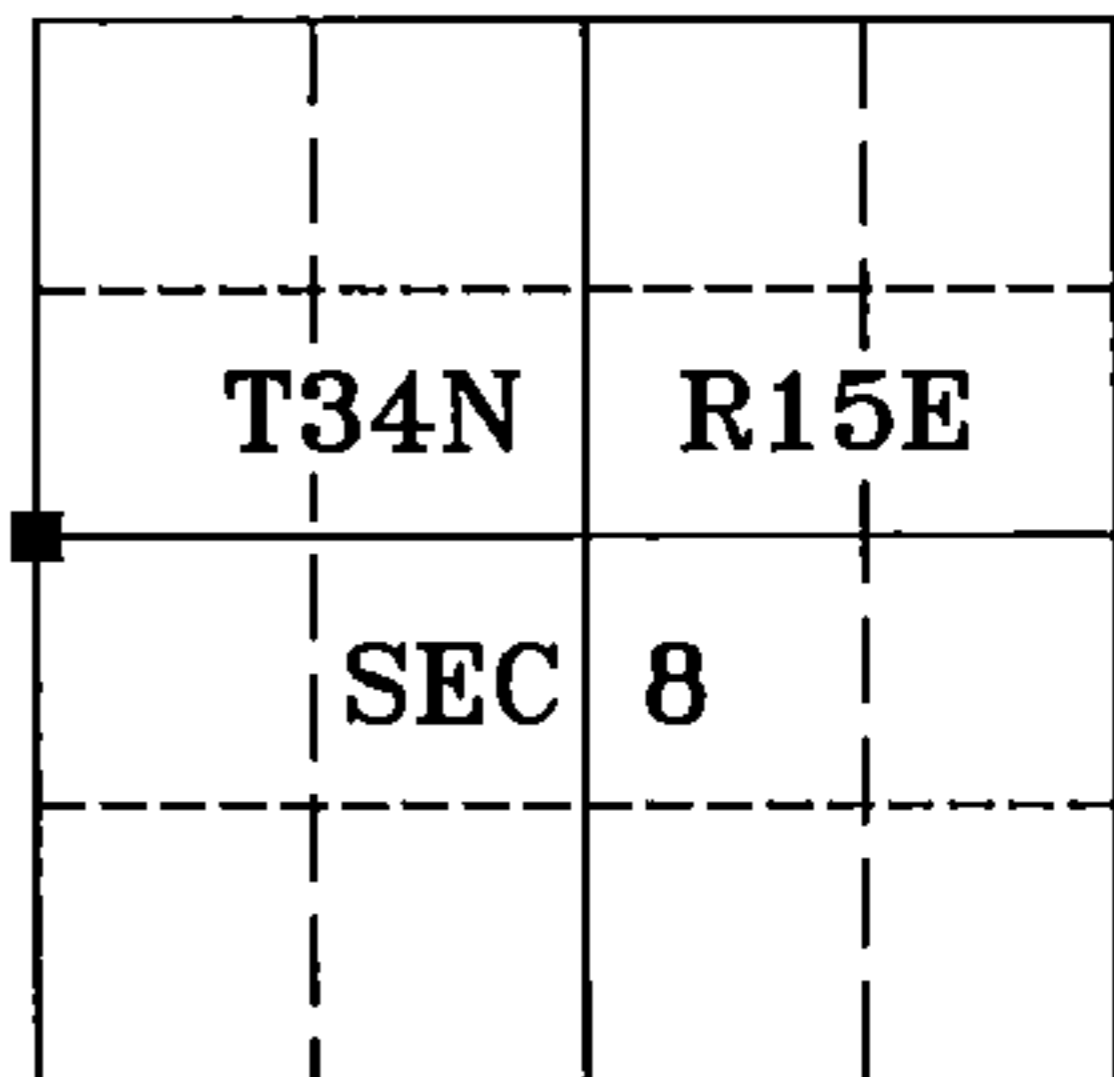
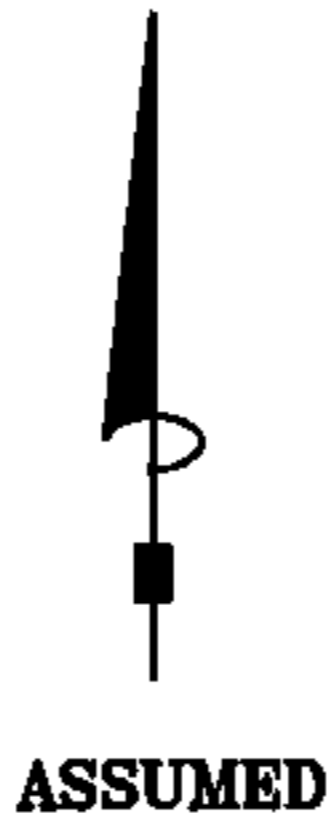
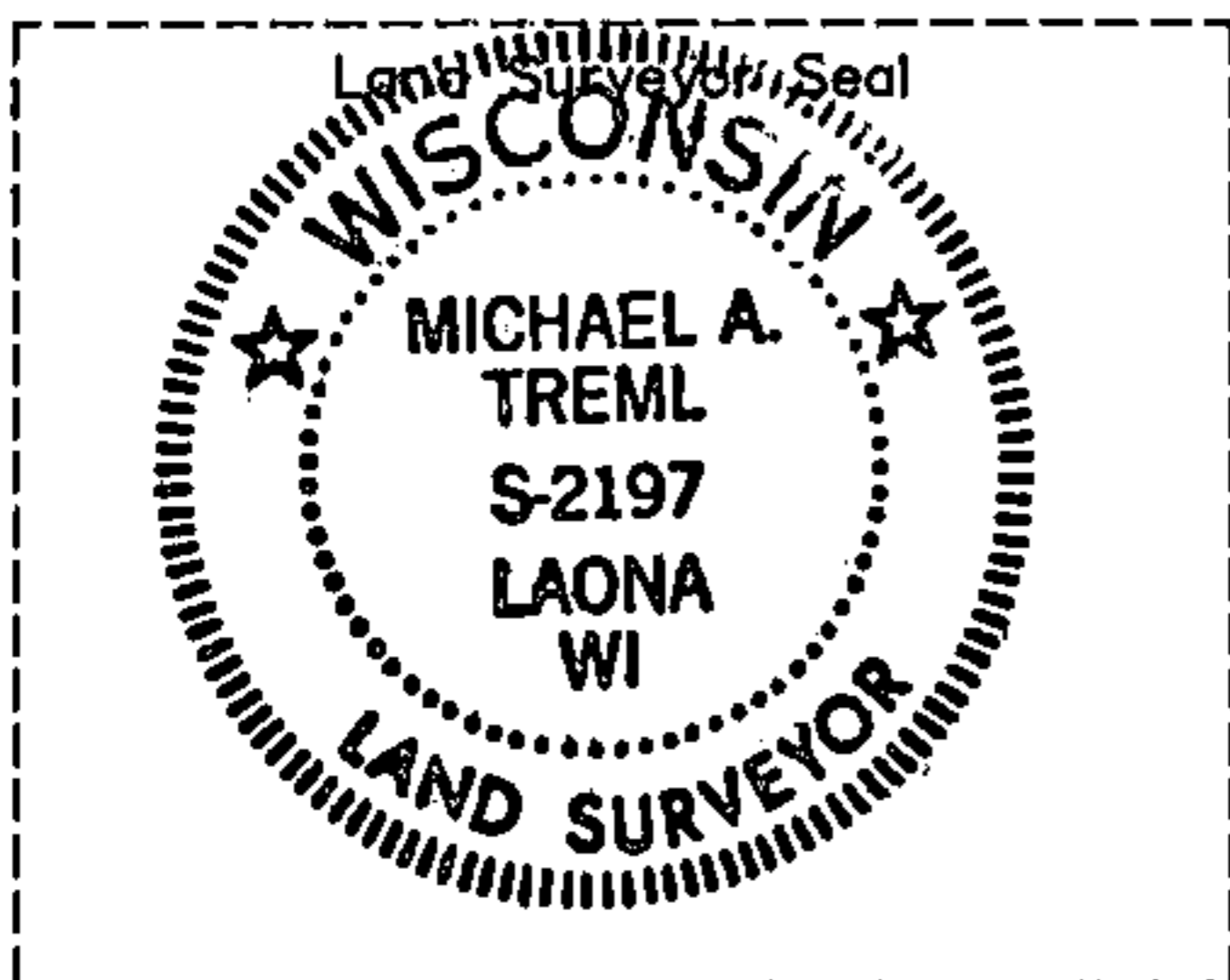
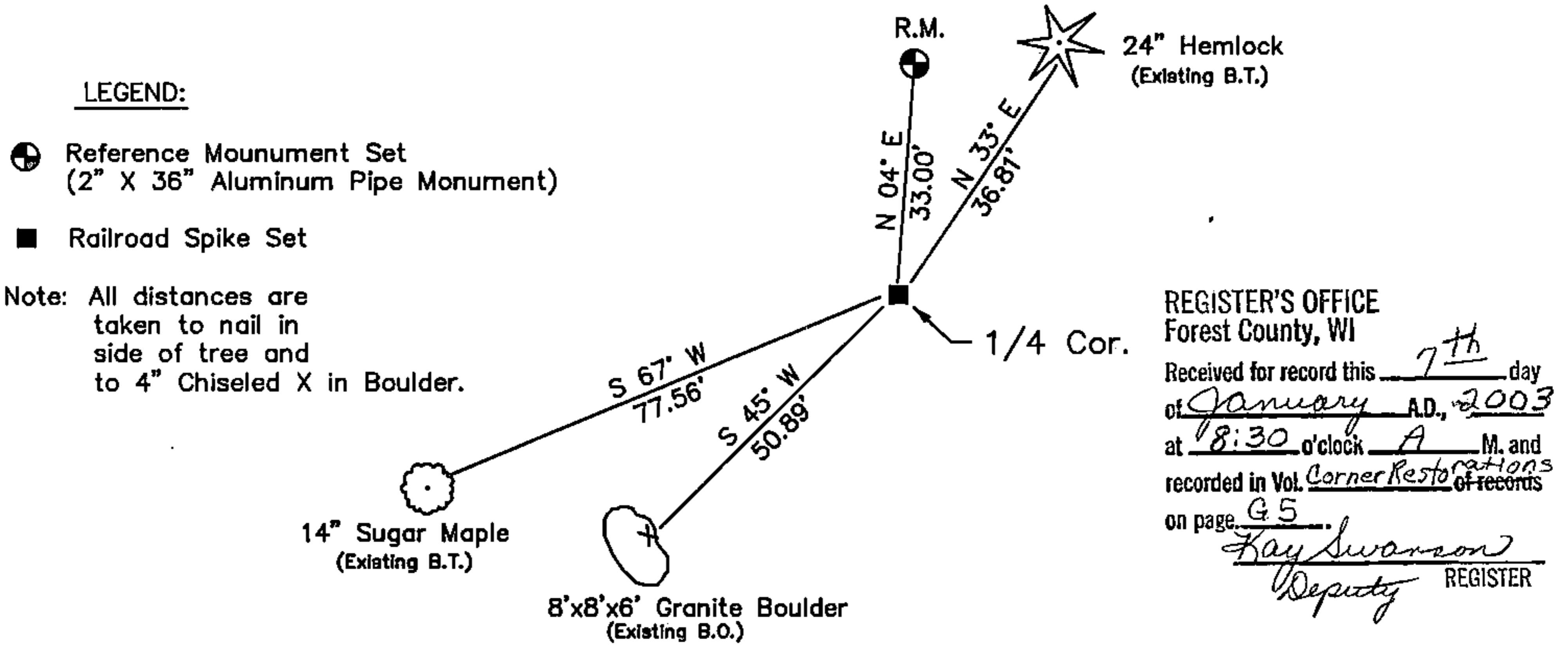
History of original corner establishment and subsequent restorations and descriptions of any record, monument, occupational, testimonial or other evidence considered:

- 1859 - James McBride, set original corner post and made the following B.T.'s:
Elm, 10", S 41° E, 17 lks., 11.22 feet; Ironwood, 6", N 36° W, 24 lks., 15.84 feet.
- 1976 - Paul Smith found a 2" iron pipe set by Public Service Survey for gas line. Said 2" iron pipe checked with plat corners on original Wabeno Plats. Set a Forest County Aluminum monument to mark the corner.
- 1982 - Milo Stefan, U.S.F.S. Surveyor, found 1/4 corner marked by a Forest County Aluminum monument and made the following new bearing trees and bearing objects:
Red Pine, 22", N 33° E, 36.81 feet Boulder, 8'x8'x6', S 45° W, 50.89 feet
Boulder, 4'x4'x3', S 35° E, 64.18 feet Sugar, 12", S 67° W, 77.56 feet
- 2002 - I restored 1/4 corner from Stefan's bearing trees and one bearing object, The Forest County monument had been disturbed during road work. I drove a railroad spike in the asphalt surface for the 1/4 corner and set a 2" dia. aluminum reference monument.

Corner was: (Check All That Apply)

- Restored through acceptance of an obliterated evidence location.
- Restored through acceptance of a found perpetuated location.
- Considered a lost corner and reestablished through lost corner proportionate methods (include a plan view drawing showing distances and directions to other Public Land Survey Corners used for proportioning and determining the corner location).
- Restored or reestablished in a location that differs from a previous restoration or reestablishment (include a plan view drawing and indicate what was set and/or found).

Describe the monument and accessories used to perpetuate the location of this corner (include a plan view drawing and indicate what was set and/or found).



I, Michael A. Tremel, RLS
(type or print name) certify that the corner location shown on this record was determined by me or under my direction and control and that this U.S. Public Land Survey Monument Record is correct and complete to the best of my knowledge and belief.

Michael A Tremel 12/06/02
Signature Date

The West Quarter corner of Section 8 T. 34 N., R. 15 E. Forest County, WI

Index No. G-5