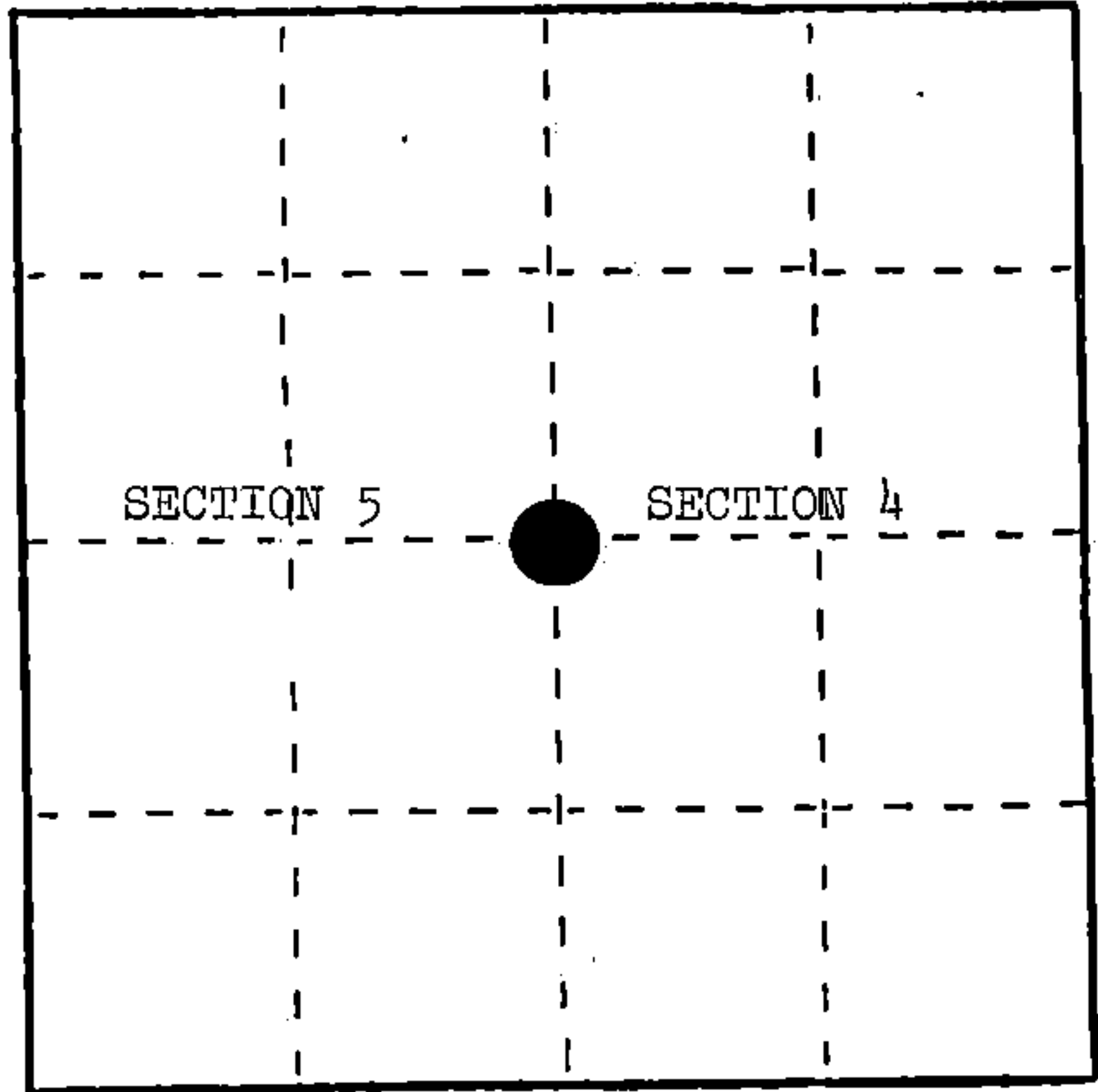


U. S. PUBLIC LAND SURVEY MONUMENT RECORD

INSTRUCTIONS: This record shall show the location of the corner and shall include all of the following nine elements (a through i).

- (a) Identify the corner by reference to the U.S. public land survey system.
- = Corner monument restored.

Quarter corner common to Sections 4 and 5, T.34N., R.15E., Forest County, Wisconsin.



REGISTER'S OFFICE }
 Forest County, Wis. } *9th*
 Received for record this..... day
 of..... *JUNE*..... A. D., 19*88* at
8:45 o'clock..... *A.* M. and
 recorded in Vol. *CORNER RESTORATIONS* of records
 on page *C-9*
Paul Aschenbrenner
 REGISTER

- (b) Describe any record evidence, monument evidence, occupational evidence, testimonial evidence or any other material evidence you considered, and whether the monument was found or placed.

In 1859, J. McBride set $\frac{1}{4}$ post and made the following BTs: Elm, 7", S.37°E., 8 links; Sugar, 7", S.6°W., 26 links.

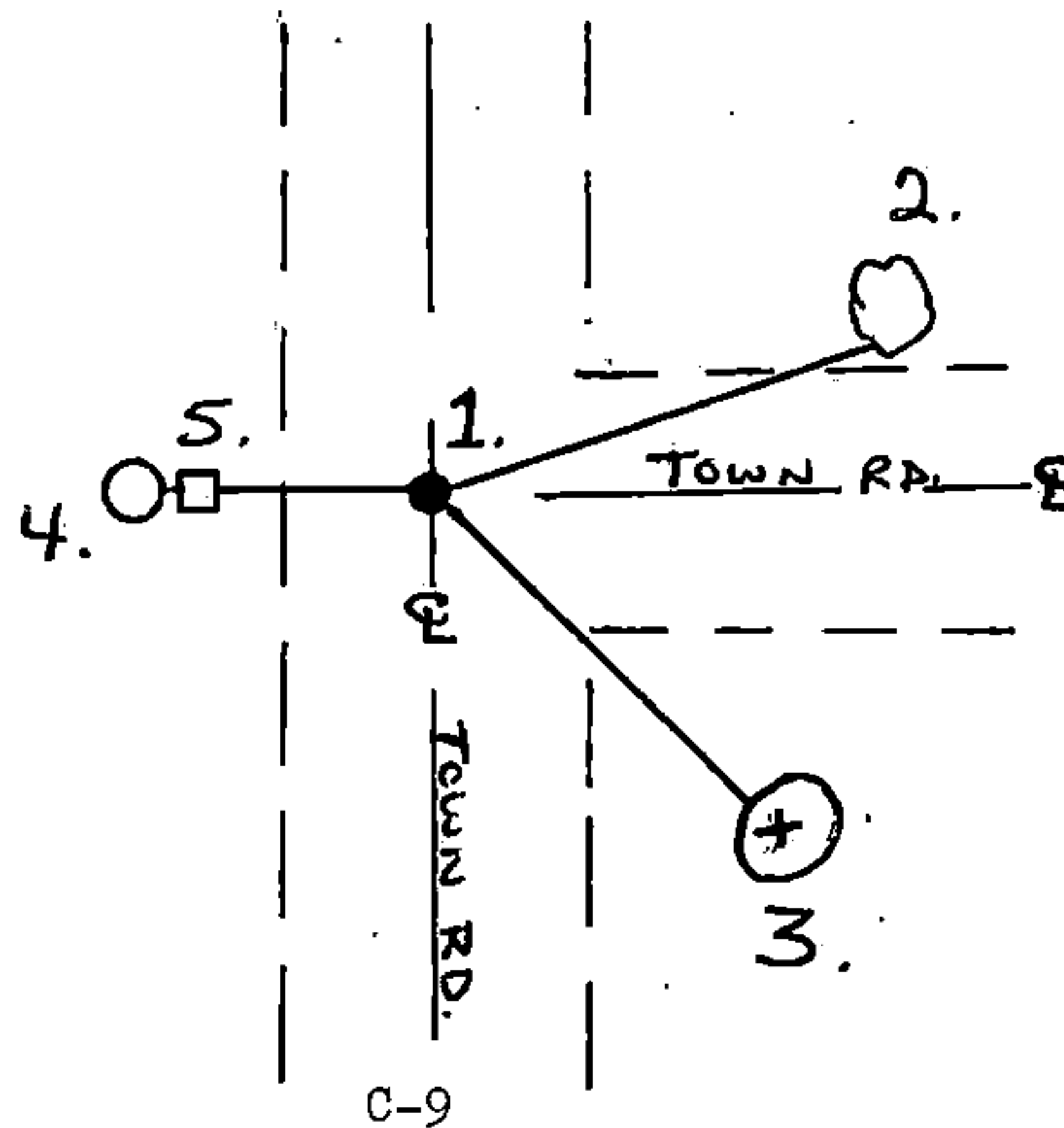
In May, 1908, J. Melendy found old post and set a new Elm post, 5" x 5". Found Elm (stump), S.37 $\frac{1}{2}$ °E., 7 $\frac{1}{2}$ links; Maple (stump), S.59°W., 25 $\frac{1}{2}$ links. Marked new BTs. Placed "X" on stone, 2 $\frac{1}{2}$ " x 3', S.84°10'W., 22 $\frac{1}{2}$ links; "X" on stone, 2' x 2', S.45 $\frac{1}{2}$ °E., 67 $\frac{1}{4}$ links.

In December, 1987, found intersection of north-south-east roads and set traverse point. At S.45°E., 44.40', found 2' x 2' stone with "X" chiseled onto top. Accepted position as a perpetuation by J. Melendy of the original corner location. Set iron pipe to mark corner location.

- (c) In the plan view drawing below, provide reference ties to at least 4 witness monuments, or, if the location is within a municipality, to at least 2 witness monuments. (Witness monuments shall be made of concrete, natural stone, iron or other equally durable material.) Describe witness monuments.

- (d) Show a plan view drawing depicting the relevant monuments and reference ties which is sufficient in detail to enable accurate relocation of the corner monument if the corner monument is disturbed. Indicate north.

1. 1 $\frac{1}{2}$ " x 30" iron pipe, 5"± below road surface.
2. Basswood, 9", N.77°E., 56.12 feet
3. "X" on stone, 2' x 2', S.45°E., 44.41 feet
4. Witness Corner Monument, 2 $\frac{1}{2}$ " x 36", West, 33.00 feet
5. Steel Sign Post, West, 32.13 feet



(e) Describe any material discrepancy between the location of the corner as restored or reestablished and the location of that corner as previously restored or reestablished by distance and direction. Show the discrepancy on the plan view drawing under (d), above. Show the distances between the corner as previously restored or reestablished and (1) the corner as restored or reestablished, and (2) to at least 2 of the witness monuments shown on the drawing in (d), above.

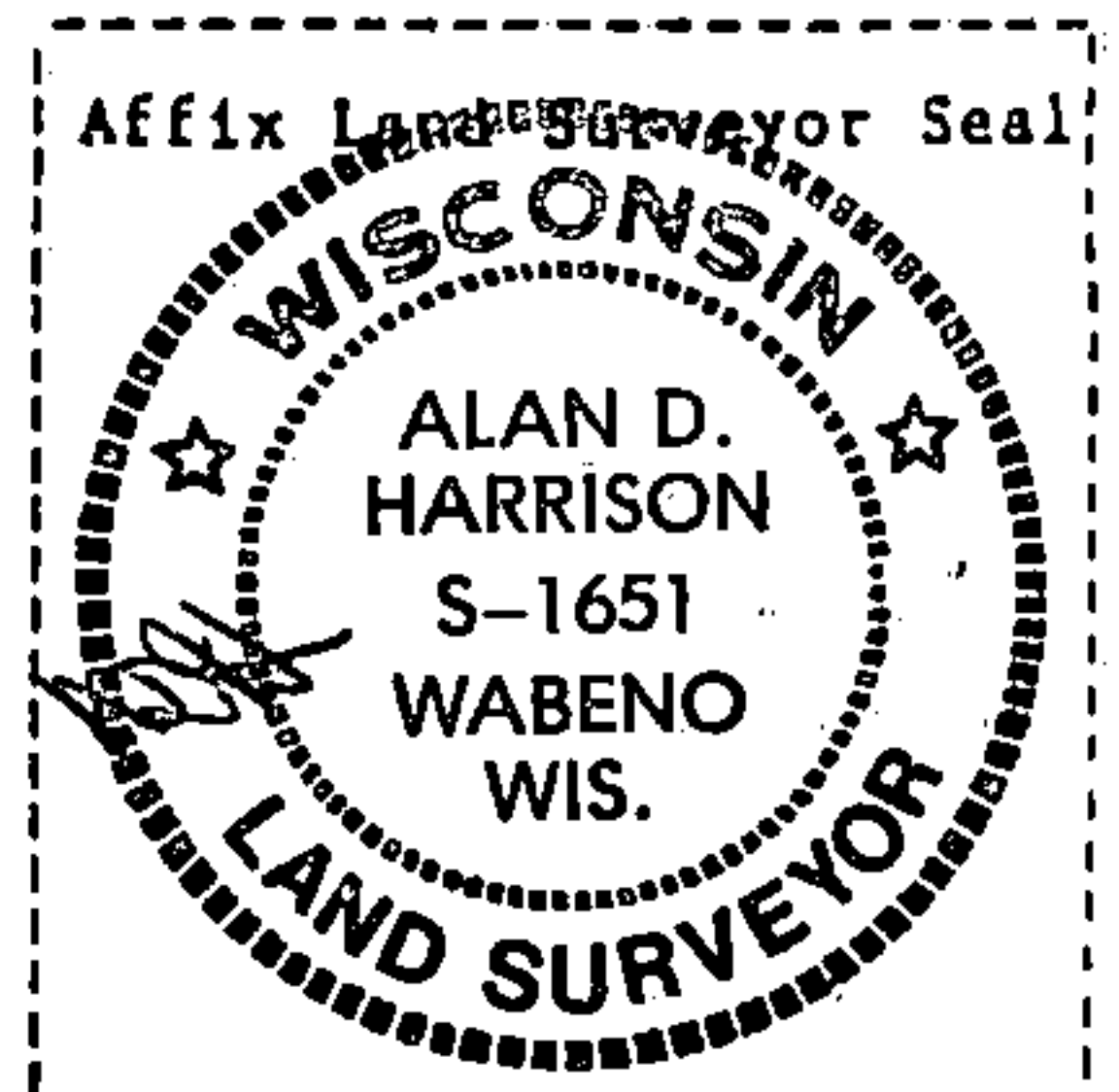
None.

(f) Was the corner restored through acceptance of (1) an obliterated evidence location, or, (2) a found perpetuated location?

(2) a found perpetuated location.

(g&h) Was the corner reestablished through lost corner proportionate methods? If so, show the method, including the directions and distances to other public land survey corners used as evidence or used for proportioning in determining the corner location?

No.



(1) I, Alan D. Harrison
(type or print name) certify that the corner location shown on this record was determined by me or under my direction and control and that this U.S. Public Land Survey Monument Record is correct and complete to the best of my knowledge and belief.

Alan D. Harrison 5/31/88
Signature Date

Certificate ready for filing: Dale S. Staege
District Ranger

Document Number

189331

REGISTER'S OFFICE
Forest County, Wis.

Received for record this 18th day
of November A.D., 2005 at
3:55 o'clock P.M. and recorded
in Vol. Corner Restoration
page C-9

Kay Swanson, Deputy
Register of Deeds

U.S. PUBLIC LAND SURVEY MONUMENT RECORD

(AS REQUIRED BY S. A-E 5.02, WI ADM. CODE)

HISTORY OF ORIGINAL CORNER ESTABLISHMENT AND SUBSEQUENT RESTORATIONS AND DESCRIPTION OF ANY RECORD, MONUMENT, OCCUPATIONAL, TESTIMONIAL, OR OTHER EVIDENCE CONSIDERED:

1859 - J. McBride, set 1/4 post and made the following Bt's:

Elm 7" S37°E 8 Links
Sugar 7" S06°W 26 Links

1908 - J. Melendy found old post and set a new Elm post, 5" x 5".

Found the following witnesses:
Elm (stump) S37.5°E 7.5 links
Maple (stump) S59°W 25.5 links

Set the following witnesses:
Placed "x" on stone S84°10'W 22.5 links
Placed "x" on stone S45.5°E 67.25 links

1987 - U.S. Public Land Survey Monument Record, Document No. #135394. Alan Harrison, Surveyor, S-1651, found intersection of North-South-East roads and set traverse point. At S45°E, 44.40', found a 2' x 2' stone with "X" chiseled on top. Accepted position as a perpetuation by J. Melendy of the original corner location. Set a 1-1/2" x 30" iron pipe to mark corner location.

Set the following witnesses:

Basswood 9" N77°E 56.12'
"X" on stone S45°E 44.41'
Witness Corner Monument West 33.00'
Steel Sign Post West 32.13'

CORNER WAS: (CHECK ALL THAT APPLY)

- RESTORED THROUGH ACCEPTANCE OF AN OBLITERATED LOCATION
- RESTORED THROUGH ACCEPTANCE OF A FOUND PERPETUATED LOCATION
- CONSIDERED A LOST CORNER AND REESTABLISHED THROUGH LOST CORNER PROPORTIONATE METHODS (INCLUDING A PLAN VIEW DRAWING SHOWING DISTANCES AND DIRECTIONS TO OTHER PUBLIC LAND SURVEY CORNERS USED FOR PROPORTIONING AND DETERMINING THE CORNER LOCATION)
- RESTORED OF REESTABLISHED IN A LOCATION THAT DIFFERS FROM A PREVIOUS RESTORATION OF REESTABLISHMENT (INCLUDE A PLAN VIEW DRAWING AND INDICATE WHAT WAS SET AND/OR FOUND)

DESCRIBE THE MONUMENT AND ACCESSORIES USED TO PERPETUATE THE LOCATION OF THIS CORNER. (INCLUDE A PLAN VIEW DRAWING AND INDICATE WHAT WAS SET AND/OR FOUND)

Set a 1" Iron pipe w/cap P.S.# S-2467-008, from record distance from witness monument and S 1/16 corner.

Found the following witnesses:

Witness monument N87°W 33.00' - Found nail on South side of tree.
Basswood 10" N80°E 56.08' - Found tag and blazes. Set D.H. nail.
Steel Sign post West 32.00'

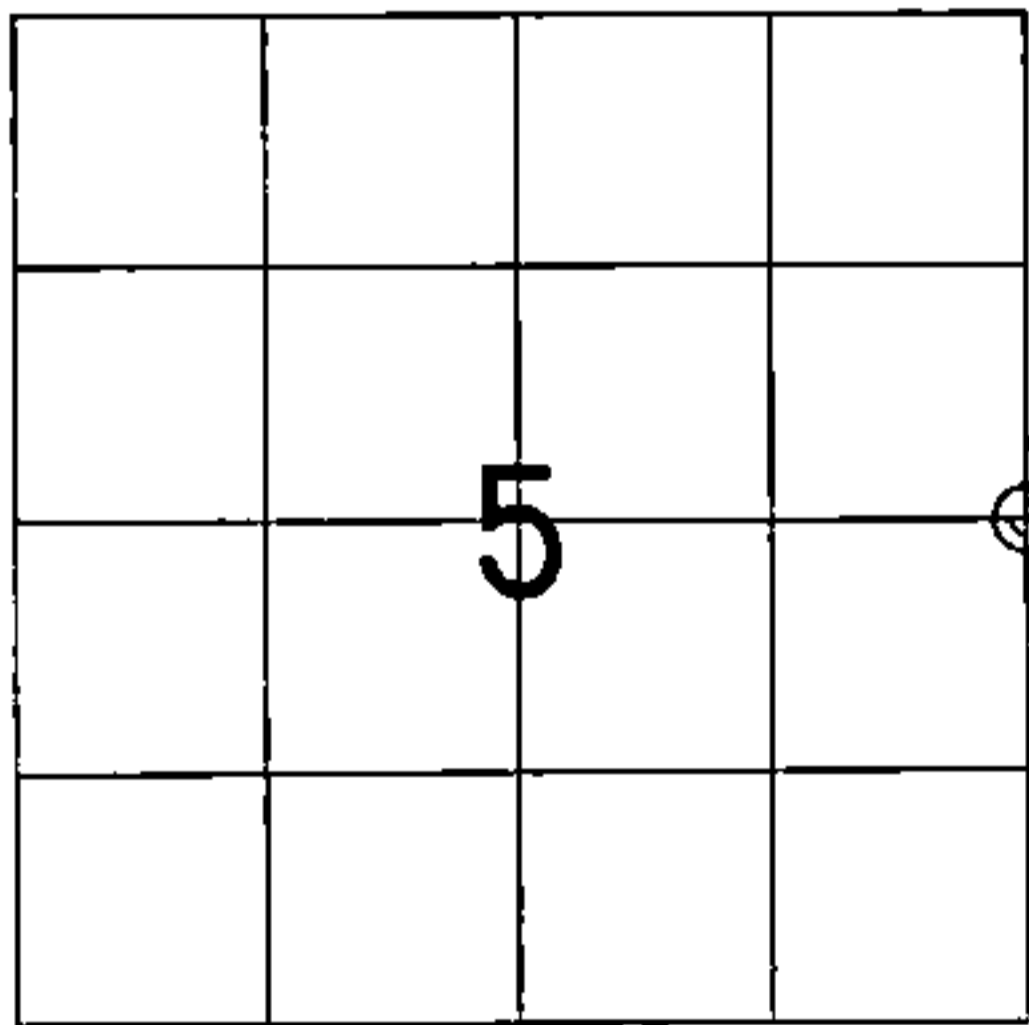
2320.91'(M), 2322.03 (R) to NE cor.
2564.99'(M), 2564.44 (R) to SE cor.
1282.22' (M), 1282.22 (R) to S 1/16 cor.

Set the following witnesses:

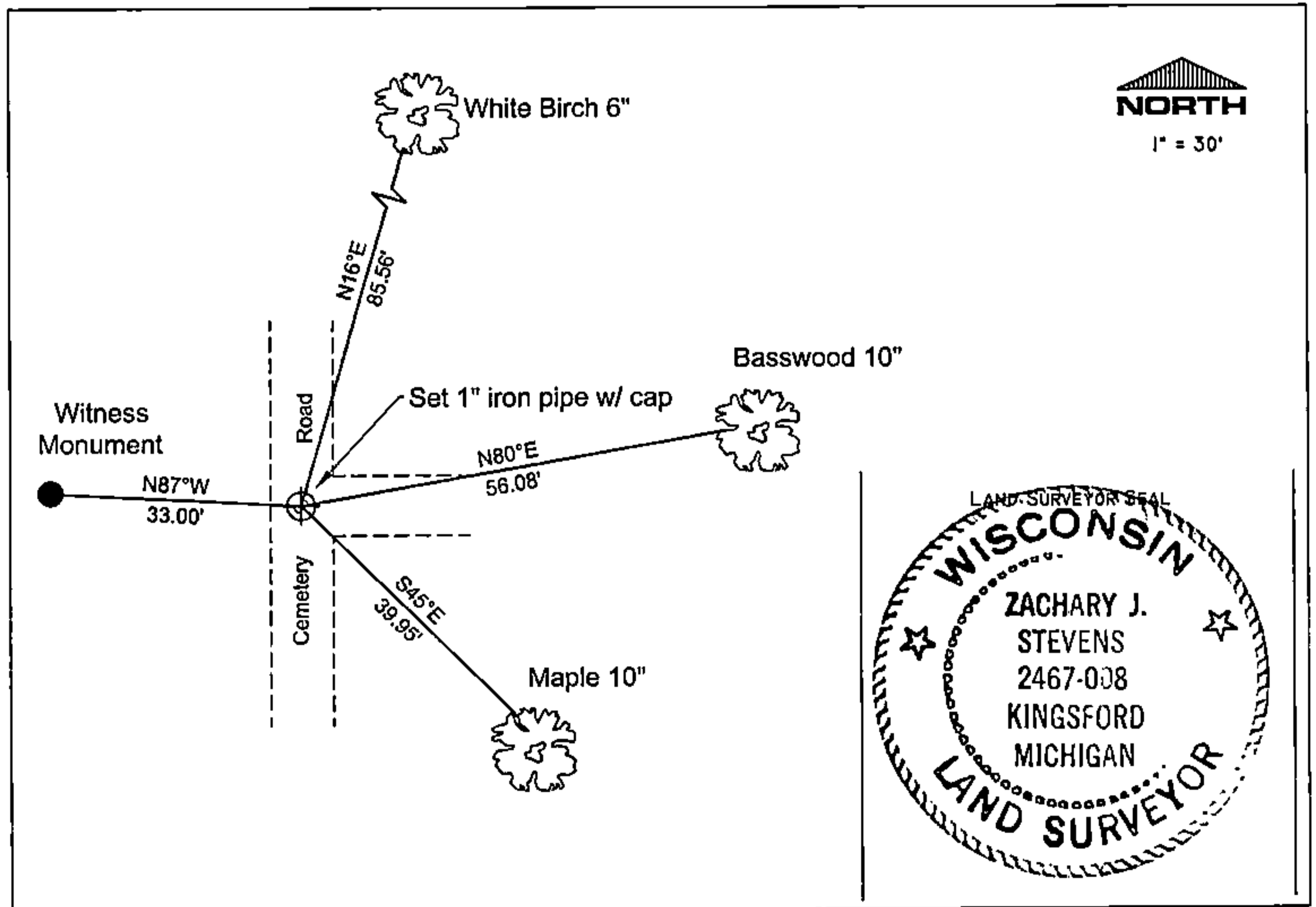
White Birch 6" N16°E 85.56' - Set D.H. nail in SE side of tree.
Maple 10" S45°E 39.95' - Set D.H. nail in South side of tree.

All trees have new chest and stump blazes.

THE EAST 1/4
CORNER OF SECTION 5,
T. 34 N., R. 15 E.,
FOREST COUNTY, WISCONSIN



⊕ = LOCATION OF CORNER



I, ZACHARY J. STEVENS R.L.S. 2467-008

INDEX No. C-9

(TYPE OR PRINT NAME) CERTIFY THAT THE CORNER LOCATION SHOWN ON THIS ABOVE RECORD WAS DETERMINED BY ME OR UNDER MY DIRECTION AND CONTROL AND THAT THIS U.S. PUBLIC LAND SURVEY MONUMENT RECORD IS CORRECT AND COMPLETE TO THE BEST OF MY KNOWLEDGE AND BELIEF.

Zachary J. Stevens 11/1/05
SIGNATURE DATE

43415 05 2000

6-2