

CERTIFIED LAND CORNER RESTORATION

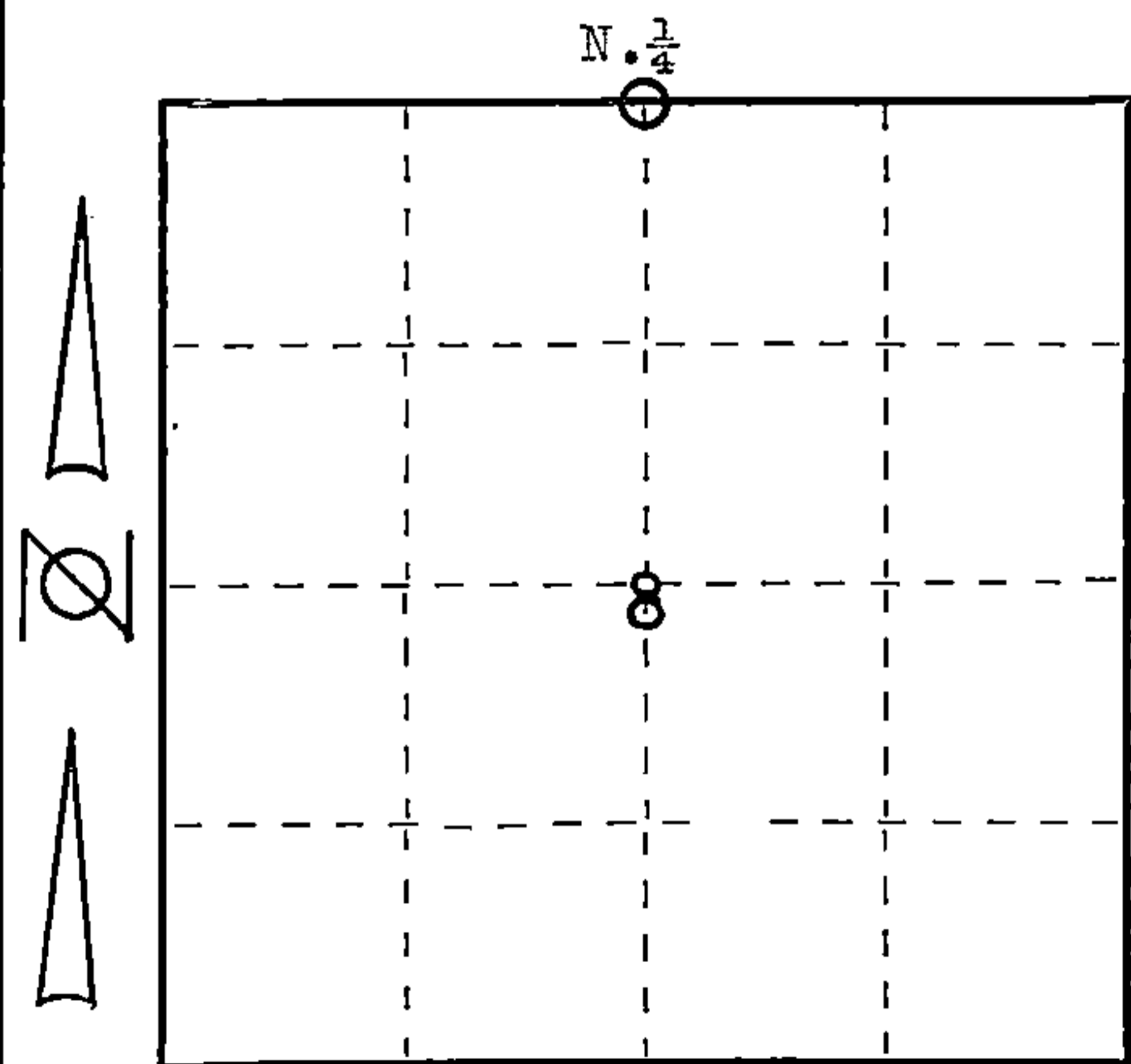
Index No. E 7

State of Wisconsin }  
County of FOREST } ss.

I Paul N. Smith, do hereby certify that on the 17 day of September, 1977, I found evidence of the North 1/4 (Quarter) corner of Section 8 Township 34, North, Range 15 East, Fourth Principal Meridian, as described hereon; and that from this evidence I established a new monument and accessories as described hereon to perpetuate the original location of this corner.

Resident witnesses:

.....  
.....  
.....



○ = Corner monument restored.

History of original corner establishment:

U. S. Dupty Surveyor set this corner in 1859  
Government Bearing Tree,s  
Black ash 7", North 53° West, 24 LK,s  
Sugar 7", South 62° East, 28 LK,S

Description of corner evidence found:

Found Point of old wood stake 3ft. below the surface of County Trunk H  
Set by N.H. Smith, 1908 at time of stakeing of the Village of Wabeno  
Repaceing stake set from orig. Bearing Tree,s

Description of monument and accessories I established to perpetuate the original location of this corner.

Forest County Monument  
Set Witness corner,s as follows  
North 38°20' East 75 ft, 3/4 " spike 18 " long  
South 40° East 70.10 ft. 1" solid rod  
South 38° West 40 ft. 1" solid rod



Dated at Athelstone, Wis., this 17 day of November, 1977.

Signature Paul N. Smith Title Land Surveyor Registration No. S-01125  
(County Surveyor, Registered Land Surveyor, or other duly authorized official)

Office of Register of Deeds, County of Forest, I hereby certify that the within instrument was filed in this office for record on the 9th day of December, 1977 at 9:45 o'clock A. M.

Eugene Staszny  
(Register of Deeds)  
By ..... Deputy

DOCUMENT NUMBER 112923

43415050020

Document Number

191720

REGISTER'S OFFICE  
Forest County, Wis.

Received for record this 3rd day  
of AUGUST A.D., 2006 at  
8:45 o'clock A.M. and recorded  
in Vol. CORNER RESTORATIONS  
page E-7

*Paul Scheibner*  
Register of Deeds

### U.S. PUBLIC LAND SURVEY MONUMENT RECORD

(AS REQUIRED BY S. A-E 5.02, WI ADM. CODE)

HISTORY OF ORIGINAL CORNER ESTABLISHMENT AND SUBSEQUENT RESTORATIONS AND DESCRIPTION OF ANY RECORD, MONUMENT, OCCUPATIONAL, TESTIMONIAL, OR OTHER EVIDENCE CONSIDERED:

1859 - JAMES McBRIDE, SURVEYOR, SET POST

SET THE FOLLOWING WITNESSES:  
BLACK ASH 7" N53°W 24 LINKS  
SUGAR MAPLE 7" S62°E 28 LINKS

1977 - CERTIFIED LAND CORNER RESTORATION DOC #112923. PAUL SMITH, SURVEYOR, S-1125, FOUND POINT OF OLD WOOD STAKE 3 FEET BELOW THE SURFACE OF COUNTY TRUNK "H" SET BY N.H. SMITH IN 1908 AT THE TIME OF STAKING THE VILLAGE OF WABENO. REPLACED STAKE WITH 3.5" ALUMINUM CAP.

SET THE FOLLOWING WITNESSES:  
3/4" SPIKE 18" LONG N38°20'E 75 FEET  
1" SOLID ROD S40°E 70.10 FEET  
1" SOLID ROD S38°W 40 FEET

2005 - WISDOT PLANS 9334-02-00 SHOWS FOUND ALUMINUM MONUMENT.

CORNER WAS: (CHECK ALL THAT APPLY)

- RESTORED THROUGH ACCEPTANCE OF AN OBLITERATED LOCATION
- RESTORED THROUGH ACCEPTANCE OF A FOUND PERPETUATED LOCATION
- CONSIDERED A LOST CORNER AND REESTABLISHED THROUGH LOST CORNER PROPORTIONATE METHODS (INCLUDING A PLAN VIEW DRAWING SHOWING DISTANCES AND DIRECTIONS TO OTHER PUBLIC LAND SURVEY CORNERS USED FOR PROPORTIONING AND DETERMINING THE CORNER LOCATION)
- RESTORED OR REESTABLISHED IN A LOCATION THAT DIFFERS FROM A PREVIOUS RESTORATION OF REESTABLISHMENT (INCLUDE A PLAN VIEW DRAWING AND INDICATE WHAT WAS SET AND/OR FOUND)

DESCRIBE THE MONUMENT AND ACCESSORIES USED TO PERPETUATE THE LOCATION OF THIS CORNER. (INCLUDE A PLAN VIEW DRAWING AND INDICATE WHAT WAS SET AND/OR FOUND)

2006 - ZACHARY J. STEVENS, SURVEYOR, S-2467-008, FOUND A 3.5" ALUMINUM CAP IN CENTERLINE OF BIT.

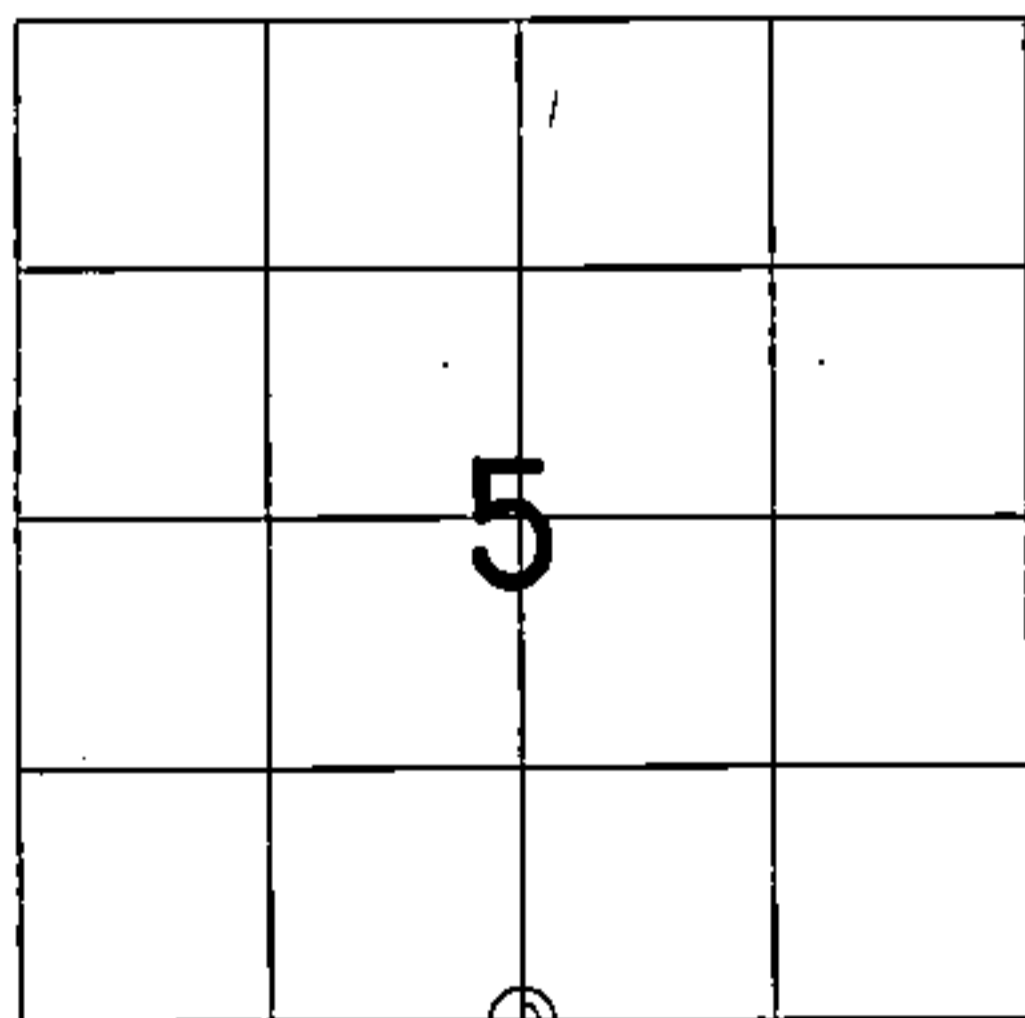
FOUND THE FOLLOWING WITNESSES:

1/2" REBAR IN CONCRETE S25°W 108.06 FEET

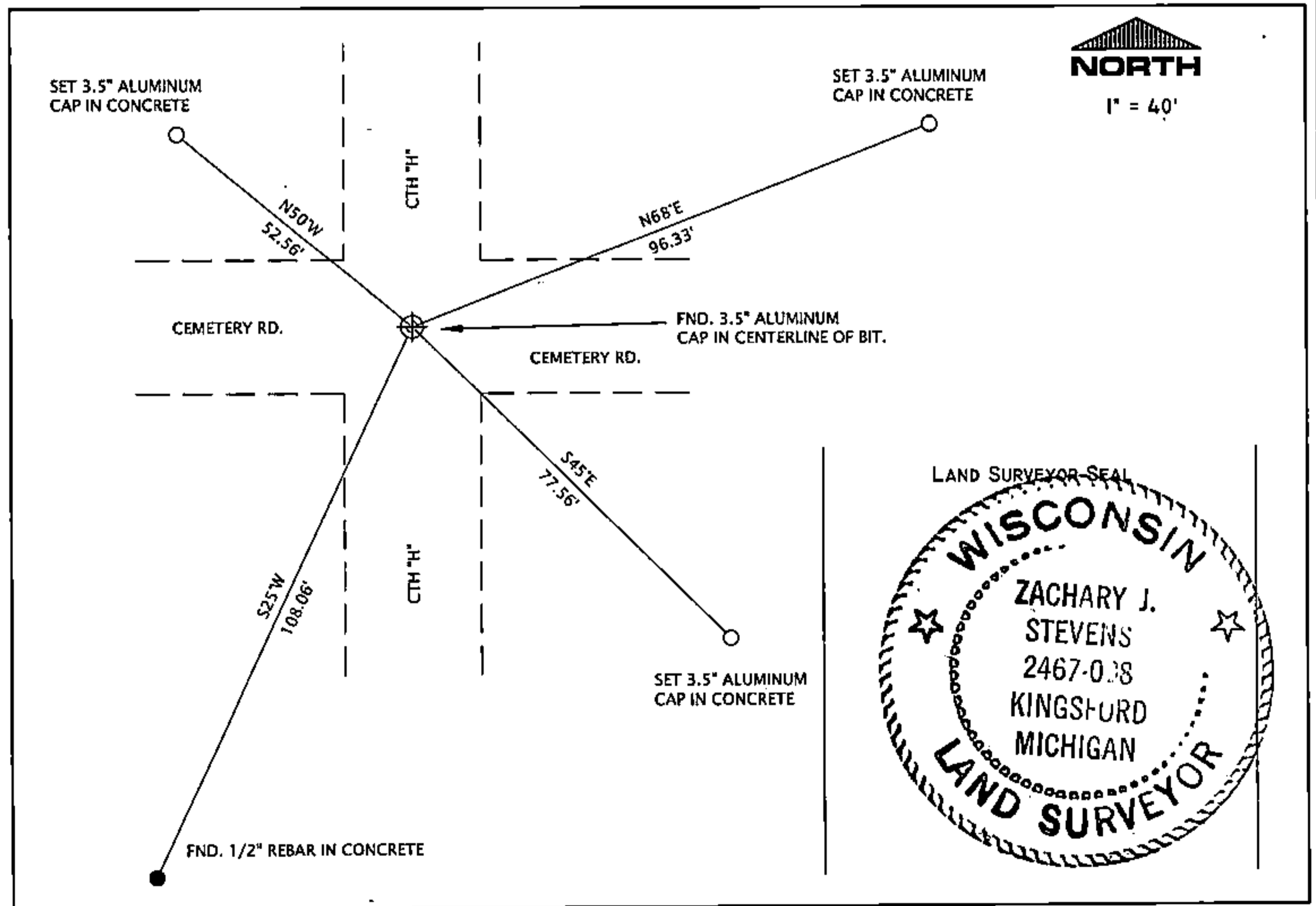
WISDOT SET THE FOLLOWING WITNESSES:  
Z. STEVENS MEASURED THE FOLLOWING:

3.5" ALUMINUM CAP IN CONCRETE S45°E 77.56 FEET  
3.5" ALUMINUM CAP IN CONCRETE N50°W 52.56 FEET  
3.5" ALUMINUM CAP IN CONCRETE N68°E 96.33 FEET

THE S 1/4  
CORNER OF SECTION 5,  
T. 34 N., R. 15 E.,  
FOREST COUNTY, WISCONSIN



⊕ = LOCATION OF CORNER



I, ZACHARY J. STEVENS RLS S-2467-008

(TYPE OR PRINT NAME) CERTIFY THAT THE CORNER LOCATION SHOWN ON THIS ABOVE RECORD WAS DETERMINED BY ME OR UNDER MY DIRECTION AND CONTROL AND THAT THIS U.S. PUBLIC LAND SURVEY MONUMENT RECORD IS CORRECT AND COMPLETE TO THE BEST OF MY KNOWLEDGE AND BELIEF.

INDEX No. E-7

*Zachary J. Stevens* 7/31/06  
SIGNATURE DATE

43415050020

E-7