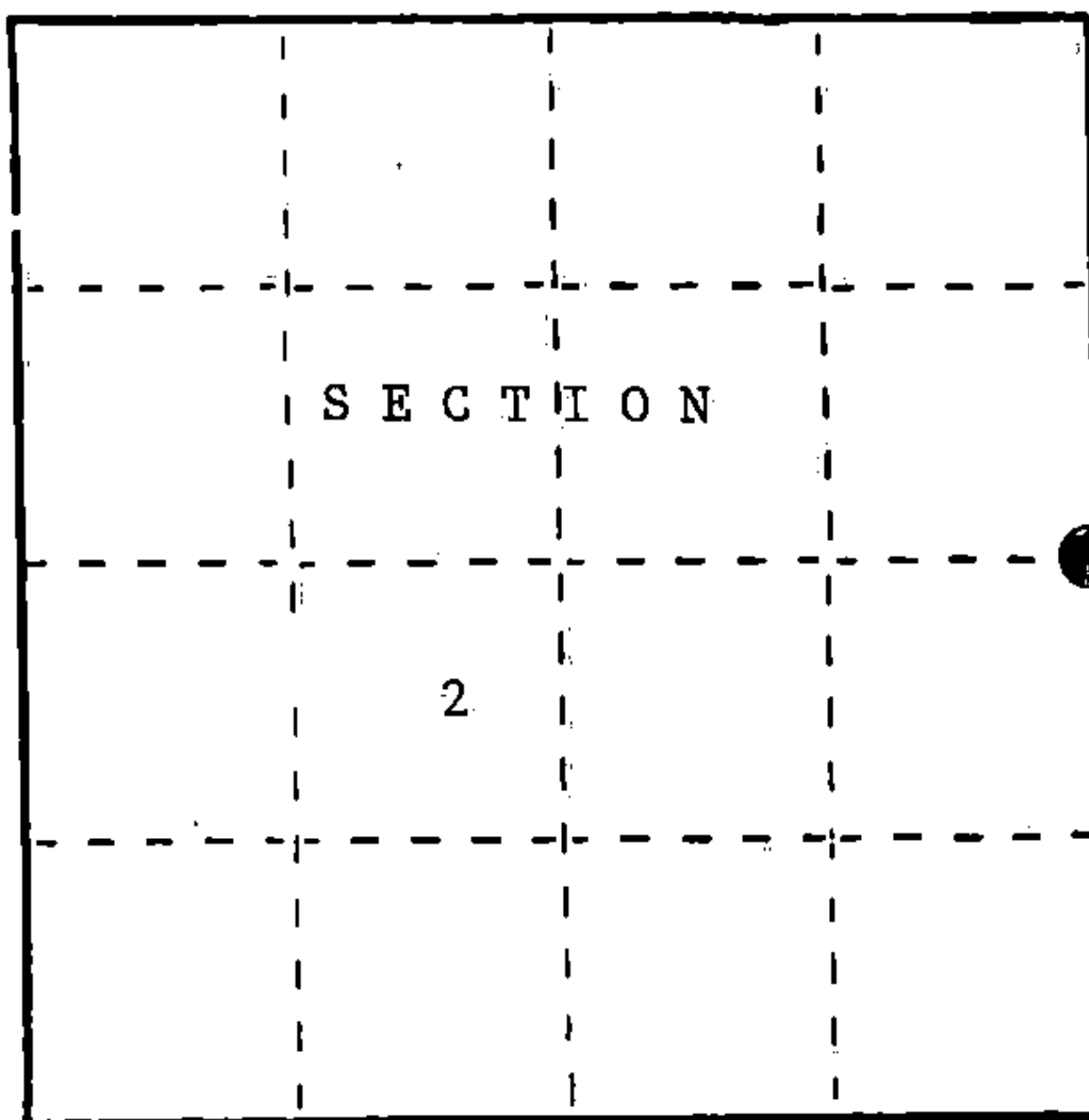


U. S. PUBLIC LAND SURVEY MONUMENT RECORD

INSTRUCTIONS: This record shall show the location of the corner and shall include all of the following nine elements (a through i).

- (a) Identify the corner by reference to the U.S. public land survey system.
- = Corner monument restored.

Quarter Corner Common to Sections 1 and 2 T34N, R15E, Forest County, Wisconsin.



REGISTER'S OFFICE
 Forest County, Wis.
 Received for record this 9th day
 of December A.D., 1988 at
2:50 o'clock P.M. and recorded
 in Vol. CORNER RESTORATIONS
 page 5-2
Paul Aschenbrenner
 Register of Deeds

- (b) Describe any record evidence, monument evidence, occupational evidence, testimonial evidence or any other material evidence you considered, and whether the monument was found or placed.

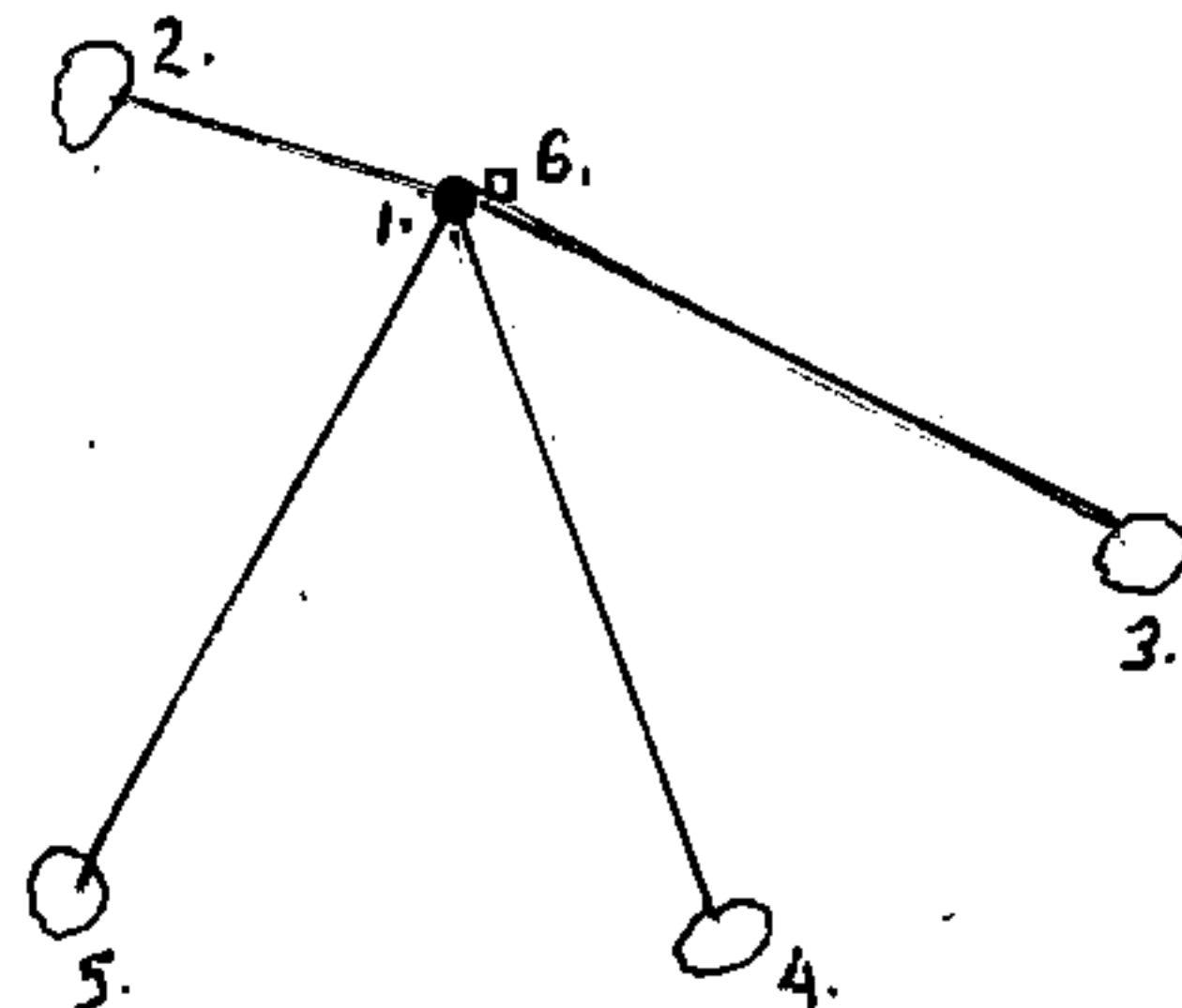
In 1859, J. McBride set a wood post for the corner and the following corner references:
 Elm 8" N52°E 55 lks.
 Elm 10" N40°W 20 lks.

In 1988, Found no evidence.
 Placed a 2 1/2" X 36" aluminum monument.

- (c) In the plan view drawing below, provide reference ties to at least 4 witness monuments, or, if the location is within a municipality, to at least 2 witness monuments. (Witness monuments shall be made of concrete, natural stone, iron or other equally durable material.) Describe witness monuments.

- (d) Show a plan view drawing depicting the relevant monuments and reference ties which is sufficient in detail to enable accurate relocation of the corner monument if the corner monument is disturbed. Indicate north.

- 2 1/2" X 36" aluminum magnetic monument, placed in a mound of stones, stamped to identify the corner.
- Basswood 11" N74°W 17.40 ft.
- Sugar Maple 5" S64°E 31.91 ft.
- Sugar Maple 8" S21°E 31.97 ft.
- Sugar Maple 7" S27°W 34.92 ft.
- Steel sign post East 1.1 ft.



(e) Describe any material discrepancy between the location of the corner as restored or reestablished and the location of that corner as previously restored or reestablished by distance and direction. Show the discrepancy on the plan view drawing under (d), above. Show the distances between the corner as previously restored or reestablished and (1) the corner as restored or reestablished, and (2) to at least 2 of the witness monuments shown on the drawing in (d), above.

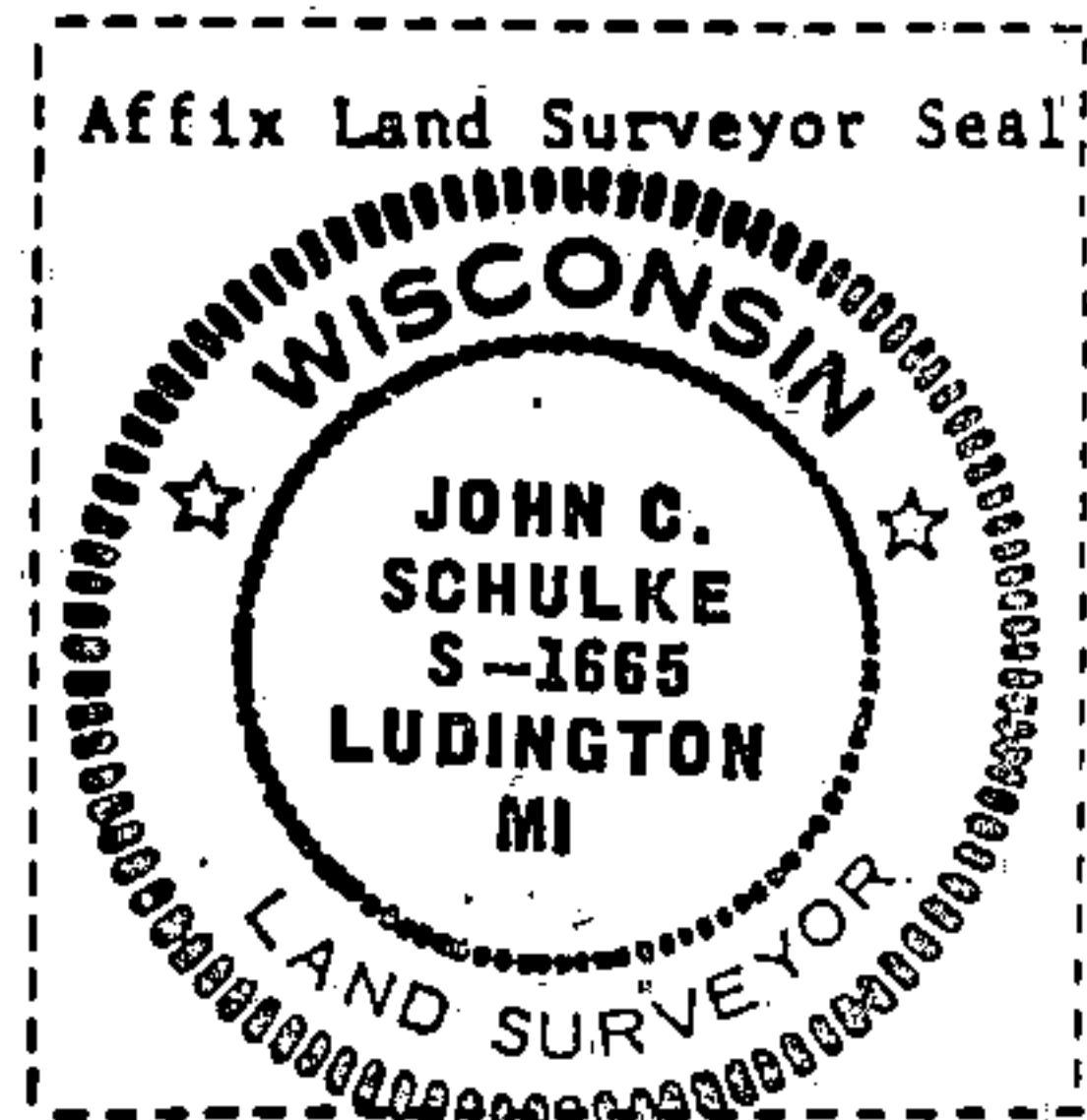
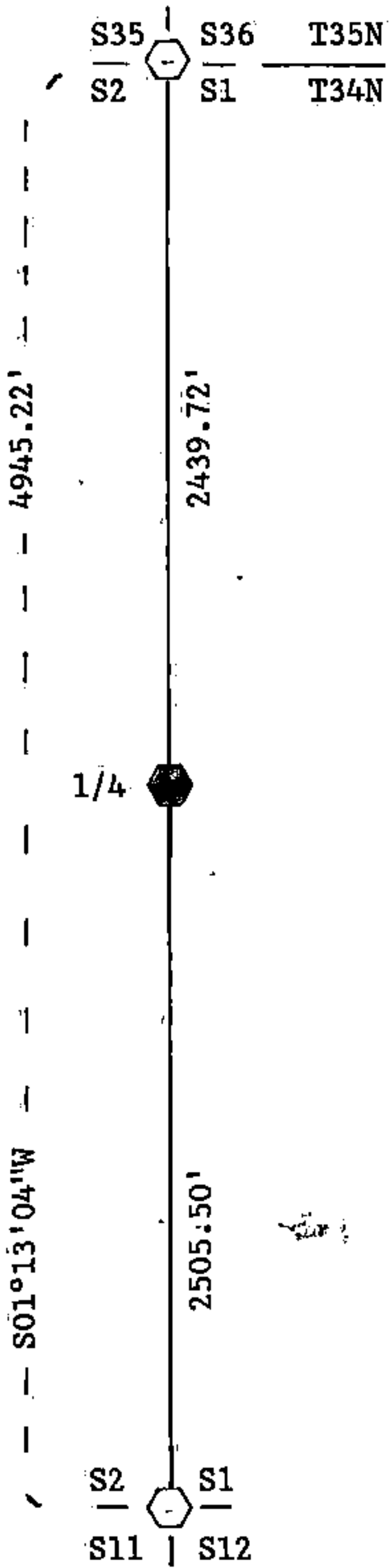
No discrepancy, first corner restoration.

(f) Was the corner restored through acceptance of (1) an obliterated evidence location, or, (2) a found perpetuated location?

No, see g and h.

(g&h) Was the corner reestablished through lost corner proportionate methods? If so, show the method, including the directions and distances to other public land survey corners used as evidence or used for proportioning in determining the corner location?

Corner restored by proportionate methods.



(i) I, John C. Schulke
 (type or print name) certify that the corner location shown on this record was determined by me or under my direction and control and that this U.S. Public Land Survey Monument Record is correct and complete to the best of my knowledge and belief.

John C. Schulke Signature Oct 16, 1988 Date

Certificate ready for filing: Dee Staege District Ranger

Document Number

189329

REGISTER'S OFFICE
Forest County, Wis.

Received for record this 18th day
of November A.D., 2005 at
3:55 o'clock P.M. and recorded
in Vol. Corner Restoration
page C-21

Kay Sivanson, Deputy
Register of Deeds

U.S. PUBLIC LAND SURVEY MONUMENT RECORD

(AS REQUIRED BY S. A-E 5.02, WI ADM. CODE)

HISTORY OF ORIGINAL CORNER ESTABLISHMENT AND SUBSEQUENT RESTORATIONS AND DESCRIPTION OF ANY RECORD, MONUMENT, OCCUPATIONAL, TESTIMONIAL, OR OTHER EVIDENCE CONSIDERED:

1859 - JAMES MCBRIDE, SURVEYOR, SET POST

SET THE FOLLOWING WITNESSES:

ELM 8" N52°E 55 LINKS
ELM 10" N40°W 20 LINKS

1988 - JOHN C. SCHULKE, SURVEYOR, S-1665, FOUND NO EVIDENCE. SET 2.5" X 36" STAMPED ALUMINUM MONUMENT IN A MOUND OF STONES.

SET THE FOLLOWING WITNESSES:

BASSWOOD 11" N74°W 17.40 FEET
SUGAR MAPLE 5" S64°E 31.91 FEET
SUGAR MAPLE 8" S21°E 31.97 FEET
SUGAR MAPLE 7" S27°W 34.92 FEET
STEEL SIGN POST EAST 1.10 FEET

CORNER WAS: (CHECK ALL THAT APPLY)

- RESTORED THROUGH ACCEPTANCE OF AN OBLITERATED LOCATION
- RESTORED THROUGH ACCEPTANCE OF A FOUND PERPETUATED LOCATION
- CONSIDERED A LOST CORNER AND REESTABLISHED THROUGH LOST CORNER PROPORTIONATE METHODS (INCLUDING A PLAN VIEW DRAWING SHOWING DISTANCES AND DIRECTIONS TO OTHER PUBLIC LAND SURVEY CORNERS USED FOR PROPORTIONING AND DETERMINING THE CORNER LOCATION)
- RESTORED OR REESTABLISHED IN A LOCATION THAT DIFFERS FROM A PREVIOUS RESTORATION OF REESTABLISHMENT (INCLUDE A PLAN VIEW DRAWING AND INDICATE WHAT WAS SET AND/OR FOUND)

DESCRIBE THE MONUMENT AND ACCESSORIES USED TO PERPETUATE THE LOCATION OF THIS CORNER. (INCLUDE A PLAN VIEW DRAWING AND INDICATE WHAT WAS SET AND/OR FOUND)

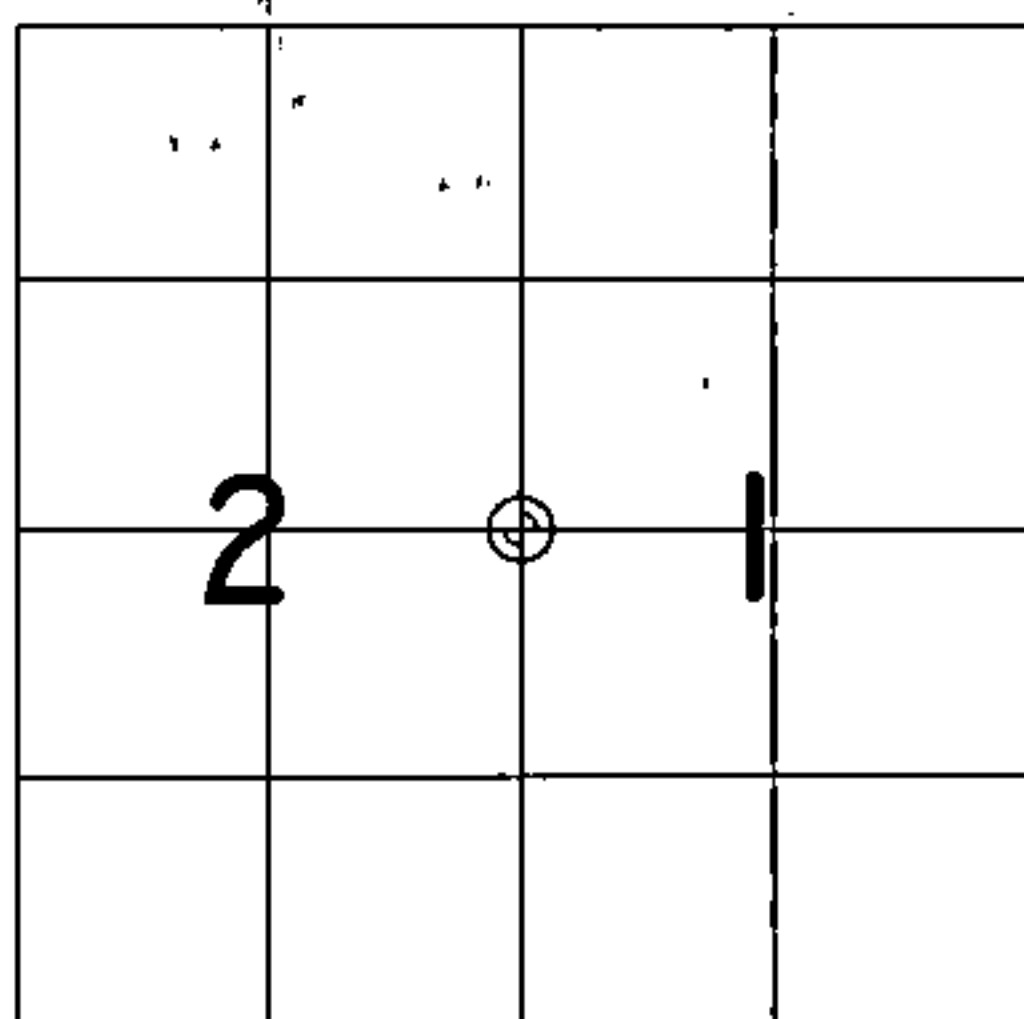
FOUND A 2.5" ALUMINUM PIPE UP 6" WITH A 3.25" STAMPED ALUMINUM CAP IN A MOUND A STONES.

FOUND THE FOLLOWING WITNESSES:

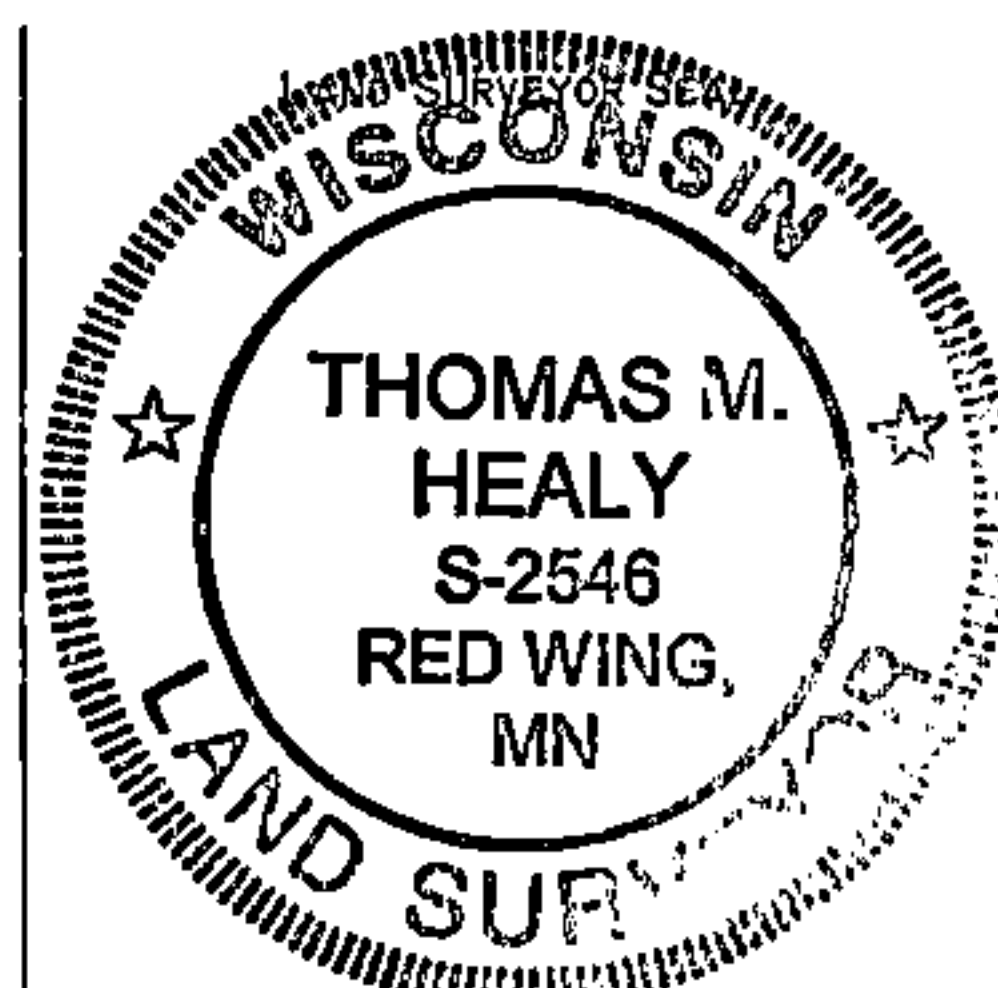
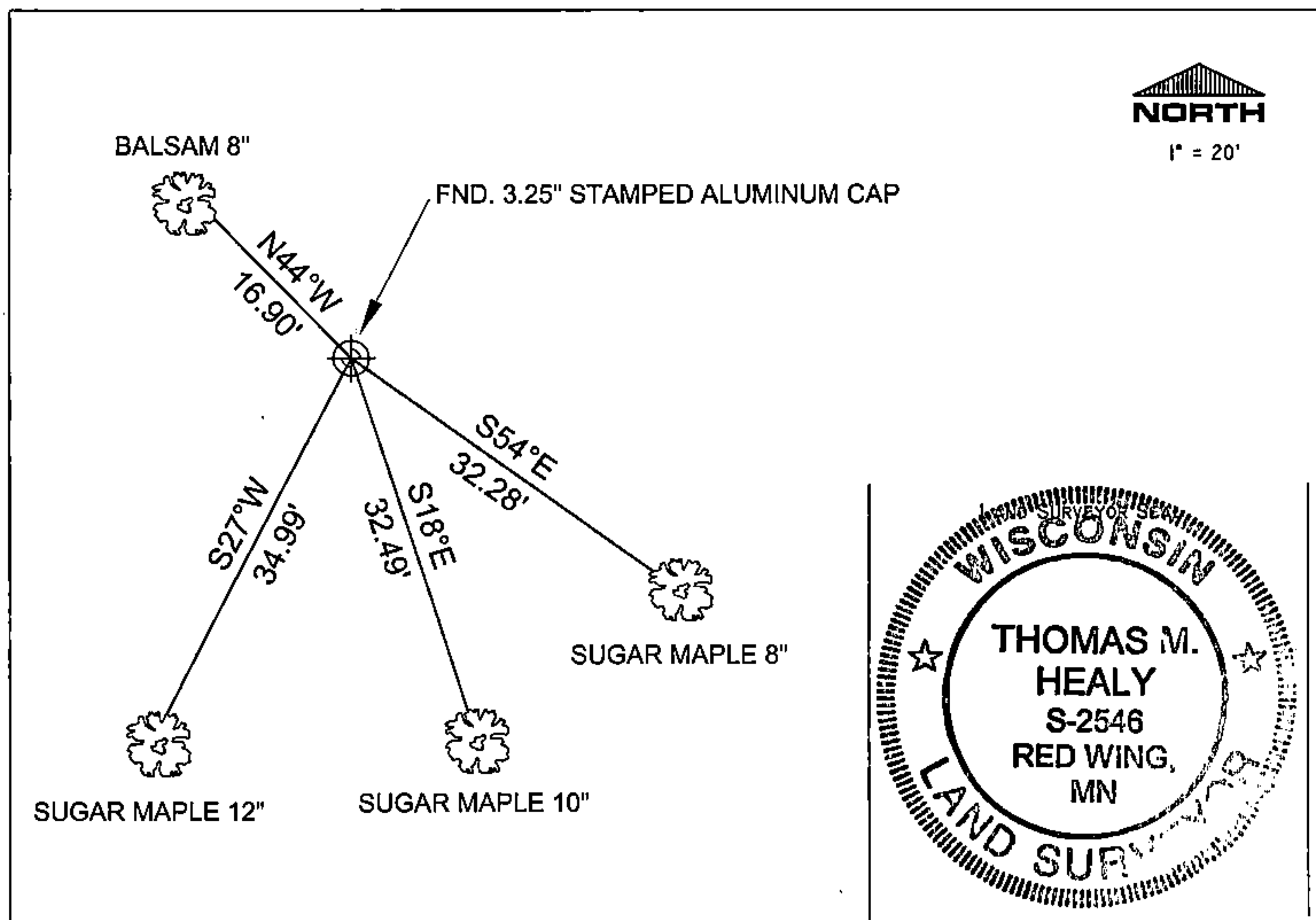
SUGAR MAPLE 12" S27°W 34.99 FEET - SET NAIL IN TREE.
BALSAM 8" N44°W 16.90 FEET - SET NAIL IN TREE.
SUGAR MAPLE 8" S54°E 32.28 FEET - SET NAIL IN TREE.
SUGAR MAPLE 10" S18°E 32.49 FEET - SET NAIL IN TREE.
SIGN POST EAST 1.00 FEET

ALL TREES HAVE STUMP AND CHEST BLAZES.

THE EAST 1/4
CORNER OF SECTION 2,
T. 34 N., R. 15 E.,
FOREST COUNTY, WISCONSIN



⊕ = LOCATION OF CORNER



I, THOMAS M. HEALY R.L.S. 2546

(TYPE OR PRINT NAME) CERTIFY THAT THE CORNER LOCATION SHOWN ON THIS ABOVE RECORD WAS DETERMINED BY ME OR UNDER MY DIRECTION AND CONTROL AND THAT THIS U.S. PUBLIC LAND SURVEY MONUMENT RECORD IS CORRECT AND COMPLETE TO THE BEST OF MY KNOWLEDGE AND BELIEF.

Thomas M. Healy 11-17-05
SIGNATURE DATE

INDEX No. C-21

43415022000

C-21